

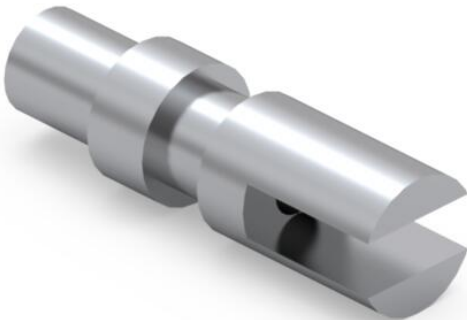


PRODUCT NUMBER: 2103-1-01-80-00-00-07-0

www.mill-max.com  
DATA SHEET

**2103-X-01-XX-00-00-07-0**  
Swage mount in .052 hole

Basic Part Number	Board Thickness	Length V
2103-1	.031	.055
2103-2	.062	.086
2103-3	.094	.117
2103-4	.125	.149



2103-1-01-80-00-00-07-0 SPECIFICATIONS

General Info	
Description <sup>1</sup> :	Slotted Terminal Pin
Mounting Feature:	Swage Mount
Mounting Hole:	.052" (1,321mm)
Alternate Mounting:	N/A
Packaging:	Packaged in Bulk
RoHS <sup>2</sup> :	Yes
Product Lifecycle <sup>3</sup> :	Active
Country Of Origin:	USA

Materials	
Shell Material <sup>4</sup> :	Brass Alloy
Shell Plating <sup>5</sup> :	200 - 300 μ" Tin (matte finish) over Nickel

Technical Specs	
Operating Temperature Range <sup>6</sup> :	- 55/+125° C
Maximum Current:	Application Specific

## NOTES:

1. Standard Tolerances:  
Lengths  $\pm 0.005"$  (0,13)  
Diameters:  $\pm 0.002"$  (0,051)  
Angles:  $\pm 2^\circ$
2. Mill-Max products labeled with the RoHS symbol are compliant with all three ROHS Directives. All of our products previously described as RoHS (2002/95/EC) and RoHS-2 (2011/65/EC) are also compliant with RoHS-3 (2015/863/EU).
3. Part is Active and in Production, No Scheduled Obsolescence
4. Brass Alloy 360 per ASTM B 16, or 385 per ASTM B455
5. TIN (100%) per ASTM B 545, Matte finish (With whisker and oxide inhibitors); NICKEL per ASTM B 689, Type 2 (Bright)
6. Per IEC 60512-11-(4,-9,-10,-12)

## ADDITIONAL NOTES AND SPECIFICATIONS

In the interest of improved design, quality and performance , Mill-Max reserves the right to make changes in its specifications without prior notice. Specifications and tolerances are provided wherever possible. The tolerance on dimensions of critical to function features is typically held tighter than the stated standard tolerances, such as press-fits, holes and lengths affecting the coplanarity of SMT products. Due to the wide variety of interconnects Mill-Max offers, the specific tolerances vary from product to product. If you need information regarding the tolerance of a particular part, please contact Technical Services.

## RELATED LINKS AND DOCUMENTS

Engineering Notebook: ( <https://www.mill-max.com/engineering-notebooks/printed-circuit-board-terminal-pins/introduction-to-swage-assembly> )

Engineering Notebook: ( <https://www.mill-max.com/engineering-notebooks/printed-circuit-board-terminal-pins> )

Environmental Compliance: ( <https://www.mill-max.com/rohs> )