

**Part Number :** [50841035](#)

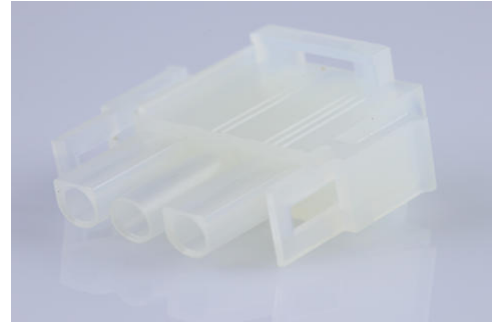
**Product Description :** 2.13mm Diameter MLX Power Crimp Housing Plug, 3 Circuits, Natural

**Series Number :** 42021

**Status :** Active

**Product Category :** Connector Housings

**Engineering Part Number :** 42021-3C



---

## Documents and Resources

### Drawings

[050841035\\_sd.pdf](#)

[PK-42021-XX-001.pdf](#)

### 3D Models and Design Files

[STEP AP242](#)

[SOLIDWORKS](#)

[Creo](#)

### Specifications


[PS-42022-0001-001.pdf](#)

[TS-42022-0001-001.pdf](#)

---

## Product Environment Compliance

### Compliance

GADSL/IMDS	Not Relevant
China RoHS	 per SJ/T 11365-2006
EU ELV	Not Relevant
Low-Halogen Status	Low-Halogen per IEC 61249-2-21
REACH SVHC	Not Contained per D(2025)7771-DC (04 Feb 2026)
EU RoHS	Compliant per EU 2015/863

### [Compliance Statements](#)

- EU RoHS

- REACH SVHC
- Low-Halogen

#### Industry Documents

- IPC 1752A Class C
- IPC 1752A Class D
- Molex Product Compliance Declaration
- IEC-62474
- chemSHERPA (xml)

#### Substances of Interest

- PFAS

#### EU RoHS Certificate of Compliance

#### Additional Product Compliance Information

## Part Details

### General

Status	Active
Category	Connector Housings
Series	42021
Description	2.13mm Diameter MLX Power Crimp Housing Plug, 3 Circuits, Natural
Application	Power, Wire-to-Board, Wire-to-Wire
Comments	Glow Wire Equivalent Part Number 366430003; Maximum current per contact 20A if used with 36663 and 36664 terminal
Product Name	MLX
UPC	800754385565

### Agency

CSA	LR19980
UL	E29179

### Physical

Circuits Detail	3
Circuits (maximum)	3
Color - Resin	Natural

Gender	Plug
Glow-Wire Capable	No
Keying to Mating Part	No
Lock to Mating Part	Yes
Material - Resin	Nylon
Net Weight	2.660/g
Number of Rows	1
Packaging Type	Bag
Panel Mount	No
Pitch - Mating Interface	6.35mm
Polarized to Mating Part	Yes
Stackable	No
Temperature Range - Operating	-55° to +105°C

### Solder Process Data

Lead-Free Process Capability	N/A
------------------------------	-----

---

### Mates With / Use With

#### Mates with Part(s)

Description	Part Number
6.35mm Pitch MLX Vertical Power Connector Headers	<a href="#"><u>42002</u></a>
2.13mm Diameter MLX Pin and Socket Receptacles	<a href="#"><u>42022</u></a>
MLX Vertical Power Connector Headers	<a href="#"><u>43255</u></a>
MLX Vertical Power Connector Headers	<a href="#"><u>36538</u></a>

#### Use with Part(s)

Description	Part Number
Pre-Crimped Lead MLX Male-to-MLX Male, Tin (Sn) Plating, 150.00mm Length, 18 AWG, Black	<a href="#"><u>797582029</u></a>
Pre-Crimped Lead MLX Male-to-	<a href="#"><u>797582030</u></a>

MLX Male, Tin (Sn) Plating, 300.00mm Length, 18 AWG, Black	
Pre-Crimped Lead MLX Female- to-MLX Female, Tin (Sn) Plating, 150.00mm Length, 18 AWG, Black	<u>797582031</u>
Pre-Crimped Lead MLX Female- to-MLX Female, Tin (Sn) Plating, 300.00mm Length, 18 AWG, Black	<u>797582032</u>
MLX Crimp Terminals	<u>36663</u>
MLX Female Terminals	<u>36664</u>
MLX Male Crimp Terminals	<u>42023</u>
MLX Female Crimp Terminals	<u>42024</u>

---

This document was generated on Apr 29, 2026