

HCMD-10-S-03.00-01

**(2.54 mm) .100"**

# IDC SOCKET & TERMINAL CABLE

**Mates with:**

TSW, MTSW, TST, HTST, EW, ZST, MTLW, TSM, EJH-02 (HCSD only)

**SPECIFICATIONS**

For complete specifications and recommended PCB layouts see [www.samtec.com?HCSD](http://www.samtec.com?HCSD) or [www.samtec.com?HCSS](http://www.samtec.com?HCSS)

**HCSD, HCSS**

**Insulator Material:** Black Liquid Crystal Polymer  
**Temperature Range:** -20 °C to +80 °C (Rainbow Cable)  
 -40 °C to +105 °C (Gray Cable)  
**Voltage Rating:** 425 VAC/600 VDC  
**Contact:** Phosphor Bronze  
**Plating:** 10 μ" (0.25 μm) Au on contact area, 150 μ" (3.81 μm) Sn on balance over 50 μ" (1.27 μm) Ni.  
**Lead Size Range:** .024" (0.61 mm) SQ to .026" (0.66 mm) SQ  
**Lead Insertion Depth:** .185" (4.70 mm) to .250" (6.35 mm)  
**Wire:** 28 AWG 7/36 stranded Tinned Copper  
**RoHS Compliant:** Yes

**SPECIFICATIONS**

For complete specifications and recommended PCB layouts see [www.samtec.com?HCMD](http://www.samtec.com?HCMD) or [www.samtec.com?HCMS](http://www.samtec.com?HCMS)

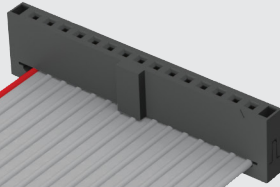
**HCMD, HCMS**

**Insulator Material:** Black Liquid Crystal Polymer  
**Temperature Range:** -20 °C to +80 °C (Rainbow Cable)  
 -40 °C to +105 °C (Gray Cable)  
**Voltage Rating:** 425 VAC/600 VDC  
**Terminal:** Phosphor Bronze  
**Plating:** Sn over 50 μ" (1.27 μm) Ni  
**Wire:** 28 AWG 7/36 stranded Tinned Copper  
**RoHS Compliant:** Yes

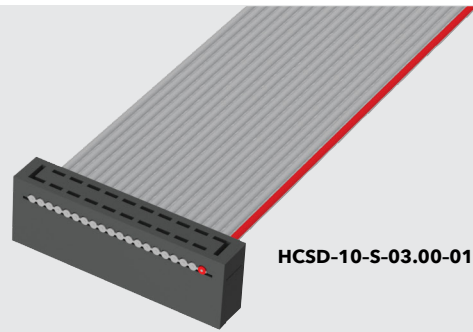
**Note:** IDC assemblies are non-standard, non-returnable.

TYPE STRIP	ROW OPTION	NO. PINS PER ROW	END ASSEMBLY	ASSEMBLED LENGTH						
	<p><b>S</b> = Single</p> <p><b>D</b> = Double</p>	<p><b>-05, -08,</b> <b>-10, -12,</b> <b>-13, -15,</b> <b>-17, -20</b></p>		<p><b>-"XX.XX"</b> = Assembled Length</p> <p>Assembled Length in INCHES (±1/8") 2 inches minimum</p>						
<b>HCM = Male Strip</b>										
<table border="1"> <thead> <tr> <th>LEAD STYLE</th> <th>A</th> </tr> </thead> <tbody> <tr> <td>-01</td> <td>(3.05) .120</td> </tr> <tr> <td>-02</td> <td>(5.84) .230</td> </tr> </tbody> </table>					LEAD STYLE	A	-01	(3.05) .120	-02	(5.84) .230
LEAD STYLE	A									
-01	(3.05) .120									
-02	(5.84) .230									
<b>HCS = Socket Strip</b>										
<p><b>-S = Single End</b></p> <p>Socket or Male Plug on one end</p>										
<p><b>-D = Double End</b></p> <p>Socket or Male Plug on each end</p>										
<p><b>-T = Transfer End</b></p> <p>Male Plug on one end with socket on other.  <b>Begin part number with HCM.</b></p>										

HCSS-15-S-03.00-01-G



HCSD-10-S-03.00-01-T-G



**HCMD, HCMS, HCSD, HCSS SERIES**

**LEAD STYLE**

**-01**  
= HCSS/HCSD or  
(3.05 mm) .120" tail for  
HCMS/HCMD

**-02**  
= (5.84 mm) .230" tail  
HCMS/HCMD only

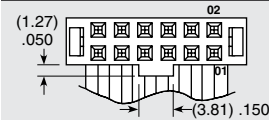
**PLATING OPTION**

**-S**  
= 10 μ" (0.25 μm) Gold on contact area or tail,  
Tin on balance  
(Standard on HCSS & HCSD. Leave blank)

**-T**  
= Tin  
(Standard on HCMS & HCMD. Leave blank)

**NOTCH POLARIZATION**

**-N** = Notch Polarization

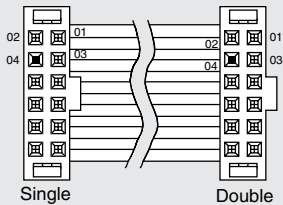


Required for HCSS and HCSD.  
(Not available on HCMS or HCMD,  
unless Transfer, then only the  
socket is polarized.)

**OTHER OPTIONS**

**-P "XX"**

= Position Polarization



Single Double

Specify "XX" as position. For Double the same position will be polarized on both ends. (Not available on HCM, unless Transfer, then only the socket is polarized)

**-G**

= Gray Cable

Standard cable is color coded. Specify -G for Gray cable with one red edge.

**-ST "X"**

= Stripped & Tinned

Specify Suffix from table.  
All dimensions are ± 1/16" (1.59 mm).



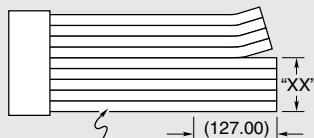
<b>-ST8</b>	1/8" (3.18)
<b>-ST4</b>	1/4" (6.35)
<b>-ST2</b>	1/2" (12.70)
<b>-ST3</b>	3/8" (9.53)

3

**-B "XX"**

= Breakout

Specify "XX" as number of conductors to be broken out.



Breakout starts with Number 1 lead indicated by brown wire or red stripe. Shown on top side.

4

**-RW**

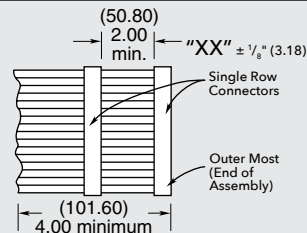
= Reversed Wiring

#1 wire opposite position #1

5

**-S "XX"**

= Daisy Chain Single

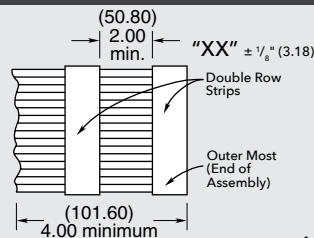


When mating double row connector with two single row connectors, the outer most single will be connected to Conductor #1 and the inside single to Conductor #2.

6

**-D "XX"**

= Daisy Chain, Double



6

**-W "XX"**

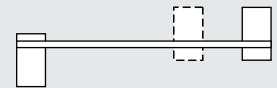
= Wiring Reversed Daisy Chain, Single

Same as -S "XX" except outer strip connected to conductor #2 and inside strip connected to conductor #1.

6

**-R**

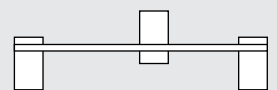
= Reversed



7

**-M**

= Middle Reversed

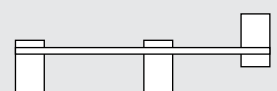


Requires -SXX, -WXX or -DXX

7

**-O**

= Outside Reversed



Requires -SXX, -WXX or -DXX

7