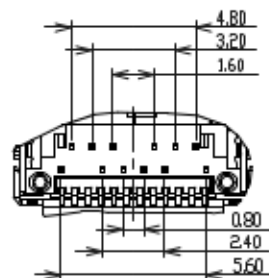
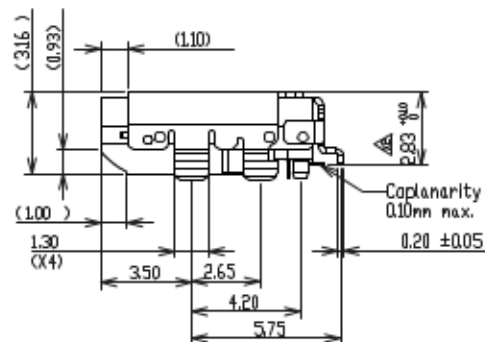
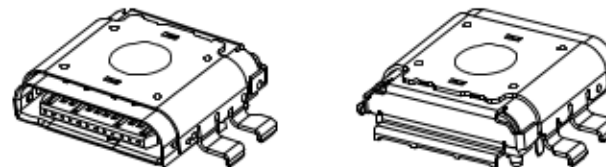
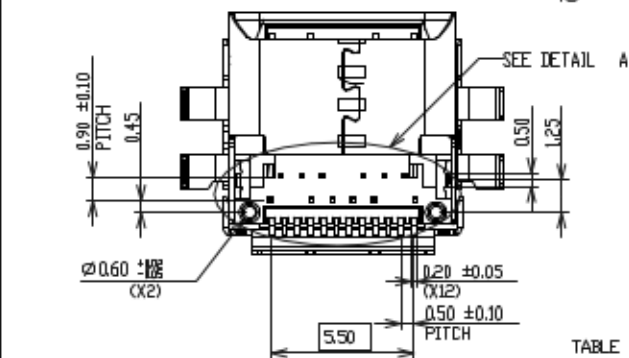
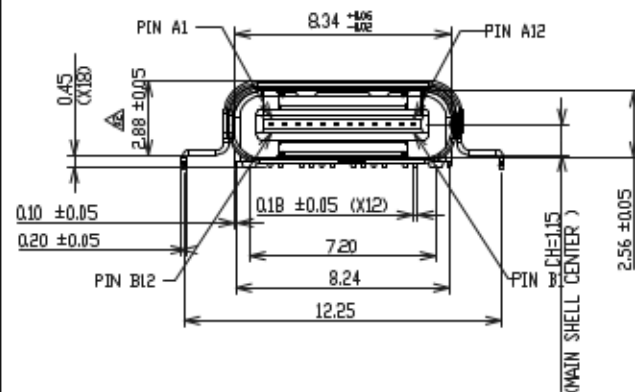
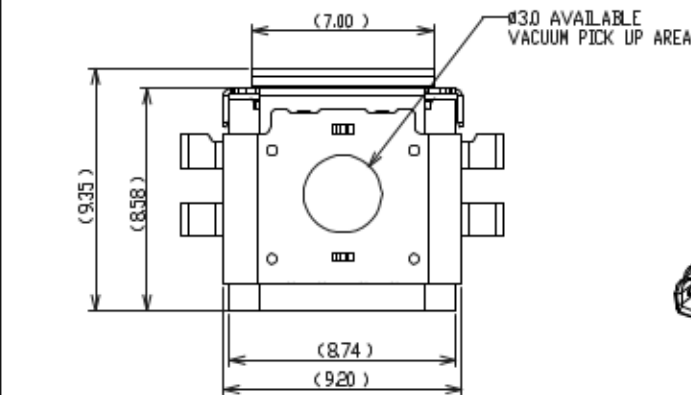
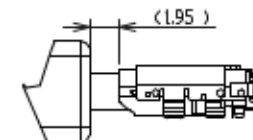
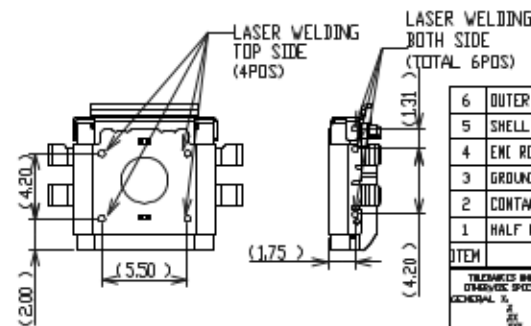


HALOGEN FREE



DETAIL A
SCALE 5:1

CONN ADD LASER WELDING POSITION



PLUG MATING REF

REV.	EC#	DESCRIPTION	DATE	DRAWN	CHECKED	APPROVED
X1	SZECR15082	NEW RELEASE PER PRI5032	04/06/15'	AVEN	ROGER	ROGER
X2	SZECR15082-01	ΔX6, AX6	06/16/15'	AVEN	ROGER	ROGER
X3	SZECR15082-02	ΔX1, AX1	07/09/15'	Raymond	ROGER	

TABLE A: PRODUCT NUMBERING CODE
PRODUCT NUMBERING CODE

C-BR27 - A K X X
① ② ③ ④ ⑤

1.CONNECTOR TYPE
BR27 : USB TYPE- C FULL FEATURE CONN
RECEPTACLE - MID MOUNT TYPE

2.NO. OF POSITION
A: 24 POSITIONS.

3.COLOR OF INSULATOR
K: BLACK.

4.PLATING OF CONTACT:
1: GOLD FLASH ON CONTACT AREA
5: Au 30u" PLATING ON CONTACT AREA.

5.PLATING OF FRONT SHELL

Δ3 SOLDERING NICKEL

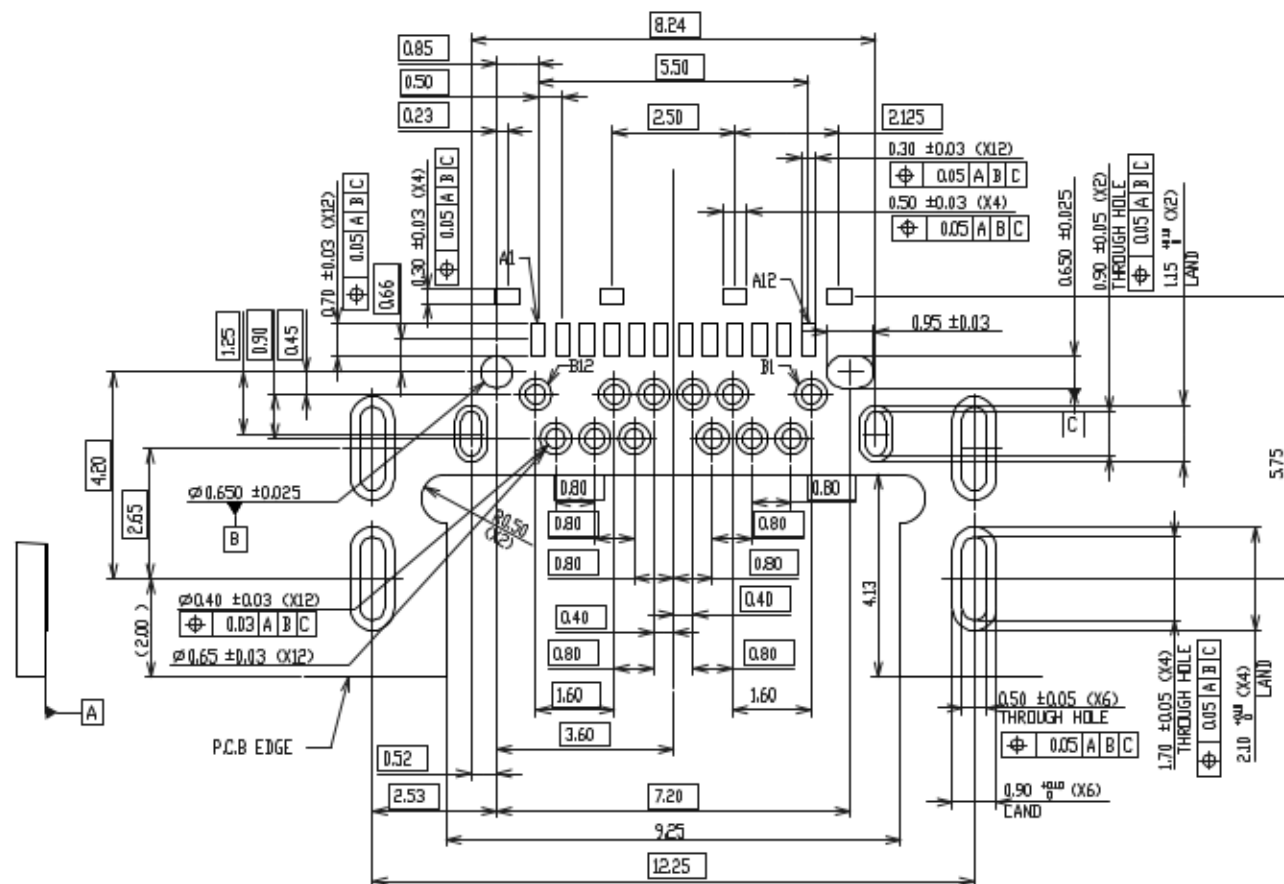
<DESIGNED TO MEET USB TYPE C SPECIFICATION>

ITEM	NAME	Q'TY	PART #	MATERIAL / FINISH
6	OUTER SHELL	1	S- BR27-2XXXX	METAL / NI PLATED
5	SHELL	1	S- BR27-1XXXX	METAL / NI PLATED
4	ENC. RING	2	H- BR27-XXXXX	METAL / NI PLATED
3	GROUND PLATE	1	H- BR27-XXXXX	METAL / NI PLATED
2	CONTACT	24	T- BR27-XXXXX	COPPER ALLOY / Au PLATED
1	HALF PRODUCT	2	BR27-XXXXXX	HI-TEMP. G.F. UL94V-0
ITEM	NAME	Q'TY	PART #	MATERIAL / FINISH
6	OUTER SHELL	1	S- BR27-2XXXX	METAL / NI PLATED
5	SHELL	1	S- BR27-1XXXX	METAL / NI PLATED
4	ENC. RING	2	H- BR27-XXXXX	METAL / NI PLATED
3	GROUND PLATE	1	H- BR27-XXXXX	METAL / NI PLATED
2	CONTACT	24	T- BR27-XXXXX	COPPER ALLOY / Au PLATED
1	HALF PRODUCT	2	BR27-XXXXXX	HI-TEMP. G.F. UL94V-0

TABLE B:

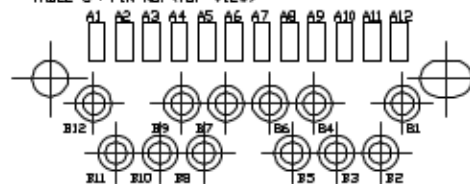
PIN NO.	A1	A2	A3	A4	A5	A6	A7	A8	A9	A10	A11	A12
SIGNAL NAME	GND	SSTxp1	SSTXn1	VBUS	CC1	Dp1	Dn1	SBUL	VBUS	SSRXn2	SSRXp2	GND
PIN NO.	B12	B11	B10	B9	B8	B7	B6	B5	B4	B3	B2	B1
SIGNAL NAME	GND	SSRXp1	SSRXn1	VBUS	SBUL	Dn1	Dp1	CC2	VBUS	SSTXn2	SSTXp2	GND

HALOGEN FREE



RECOMMENDED PCB LAYOUT
THICKNESS IS 0.7mm
TOLERANCE ± 0.05

TABLE C - PIN NO. (TOP VIEW)



NOTES:

1.0. ELECTRICAL CHARACTERISTICS:

1.1. LOW LEVEL CONTACT RESISTANCE:
INITIAL $40m\ \Omega$ FOR ALL CONTACT MAX.
AFTER 10m Ω MAX. CHANGE

1.2. DIELECTRIC WITHSTANDING VOLTAGE:
100 VAC FOR 1 MINUTE SEA LEVEL.

1.3. INSULATION RESISTANCE:
100M

1.4. CURRENT RATING
VBUS AND GND CONTACTS RATED AT 1.25A EA.,
PARALLELED FOR A TOTAL OF 5A.

2.0. MECHANICAL CHARACTERISTICS:

2.1. INSERTION FORCE: 20N MAX

2.2. EXTRACTION FORCE:
DURABILITY 1-1000 CYCLES 8N MIN. 20 N MAX.
DURABILITY 1001-1000 CYCLES 6N MIN. 20 N MAX.

2.3. DURABILITY: 10,000 CYCLES

3.0. OPERATING TEMPERATURE: -40°C TO +85°

<p>DESIGNED BY: AVEN CHECKED BY: AVEN DATE: 14/06/15</p>	<p>DATE: 14/06/15</p>	<p>CnC Tech, LLC</p>	<p>TITLE: USB Type-C 3.1 (10Gbps) Conn. RECEPTACLE - MOD MOUNT TYPE</p>
<p>SCALE: 5:1 SHEET 2 OF 2</p>	<p>DATE: 14/06/15</p>	<p>SERIES: BR27 SERIES</p>	<p>REV: A3</p>
<p>UNIT: mm</p>	<p>DATE: 14/06/15</p>	<p>PART NO: C-BR27-00-00</p>	<p>REV: X3</p>