

## EMB-380-S2 Development Board

SKU 113990090

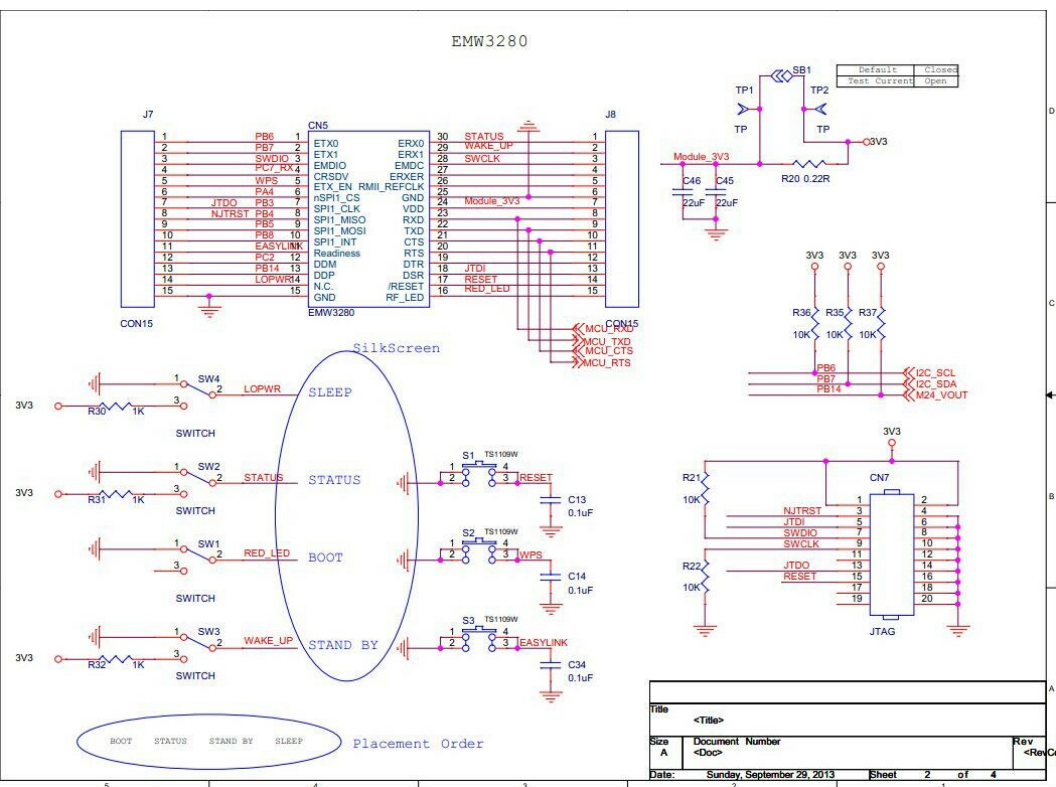
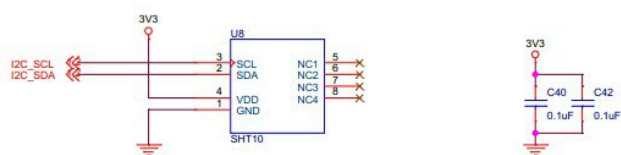
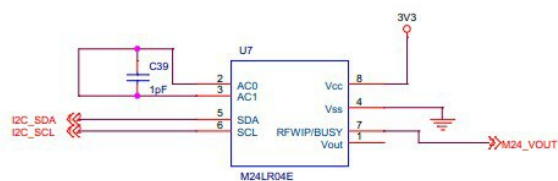


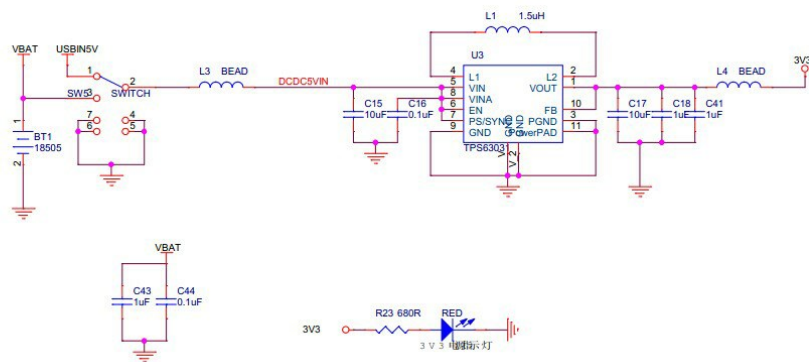
Downloaded from [Arrow.com](https://www.arrow.com)

### Description

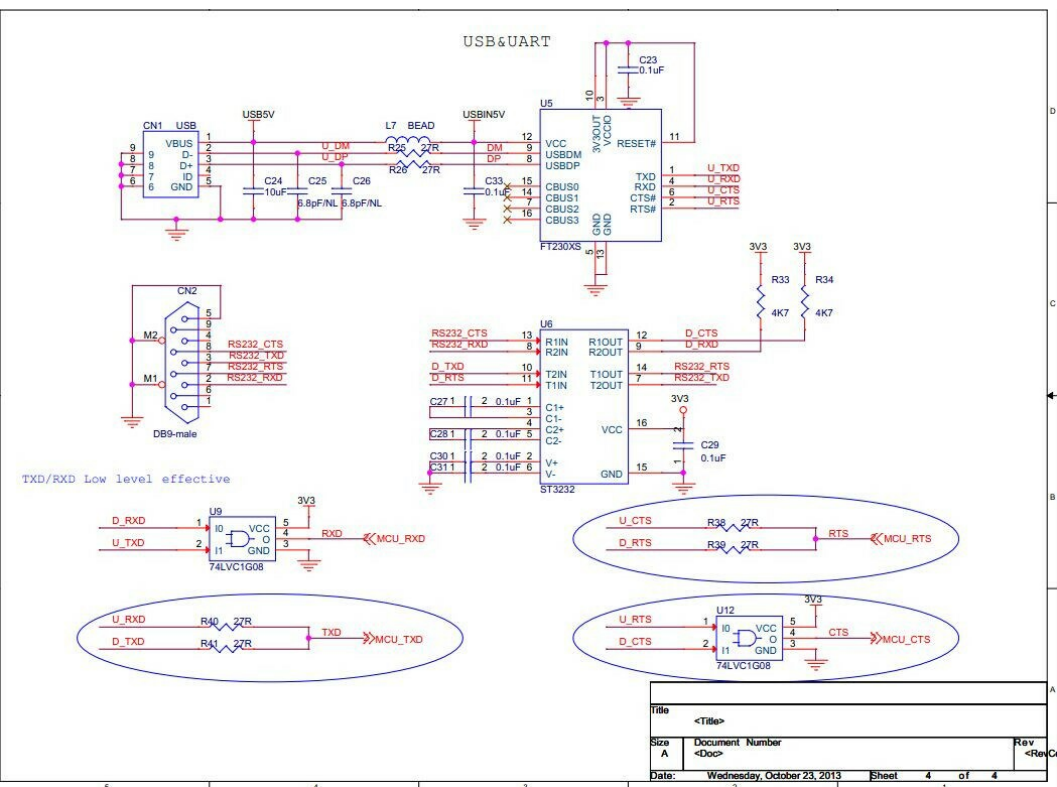
The module assessment tool can provide power modules and DB 9 serial interface, users can directly connect with the PC serial port module, and then evaluation module functions. This board developed for [EMW3162 WiFi Module](#).

If you have any technical problem, please contact [sales@mxchip.com](mailto:sales@mxchip.com).





Title	<Title>	Rev	<Rev>
Size	Document Number	Number	
A	<Doc>		
Date:	Monday, September 30, 2013	Sheet	3 of 4



Title	<Title>	Rev	<Rev>
Size	Document Number	Number	
A	<Doc>		
Date:	Wednesday, October 23, 2013	Sheet	4 of 4

## Technical Details

Dimensions 180mm x 130mm x 18mm

Weight G.W 67g

Battery Exclude

## ECCN/HTS

ECCN Not Available

HS CODE 8543909000

## Questions and Answers

Have a question about this? Ask people who

0 How do I get more of the small pin headers for use with this board?

matt on Sep 13, 2017

Reply upvote (0)

Hi-As the description shows, if you have any technical problem, please contact sales(at)mxchip.com. Thanks

Downloaded from Arrow.com on Sep 14, 2017 14:31 PM

Reply upvote (0)

# EMB-380-S2 Development Board

SKU 113990090



IN STOCK

10 Available

ADD TO CART

Description

Technical Details

Questions and Answers

<>  
✕



✕  
Notify me when it's back in stock

SUBMIT

^

## POPULAR SEARCHES

PCB Manufacturing PCB Assembly PCB Layout 3D Printing PCB Stencil Lora ReSpeaker Grove Lidar GPS Can-Bus Arduino Arduino Shield Beaglebone  
Raspberry Pi FPGA LinkIt ONE Crazyflie 2.0 Raspberry Pi 3 Model B RF Explorer DSO Nano v3 HiKey rplidar raspberry pi relay RPLIDAR A2

### Company

About Seeed  
Distributors  
Careers  
Contacts

### Help Center

How to Get Help  
FAQ  
Technical Support  
Shipping & Order  
Warranty & Returns  
Payment Information

### Community

Project Hub  
Forum  
Blog  
Wiki

### Stay Tuned

Subscribe to our newsletter.

>

