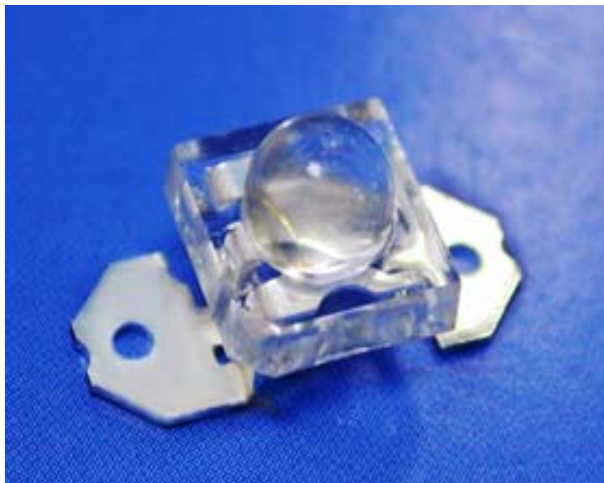


PRELIMINARY SPEC

Part Number: L-7700C4SEC-H



Technical Data

Features

- * HIGH LUMINANCE OUTPUT.
- * DESIGN FOR HIGH CURRENT OPERATION.
- * SOLDERLESS MOUNTING TECHNIQUE.
- * LOW POWER CONSUMPTION.
- * LOW THERMAL RESISTANCE.
- * LOW PROFILE.
- * PACKAGED IN TUBES FOR USE WITH
AUTOMATIC INSERTION EQUIPMENT.
- * RoHS COMPLIANT.

Benefits

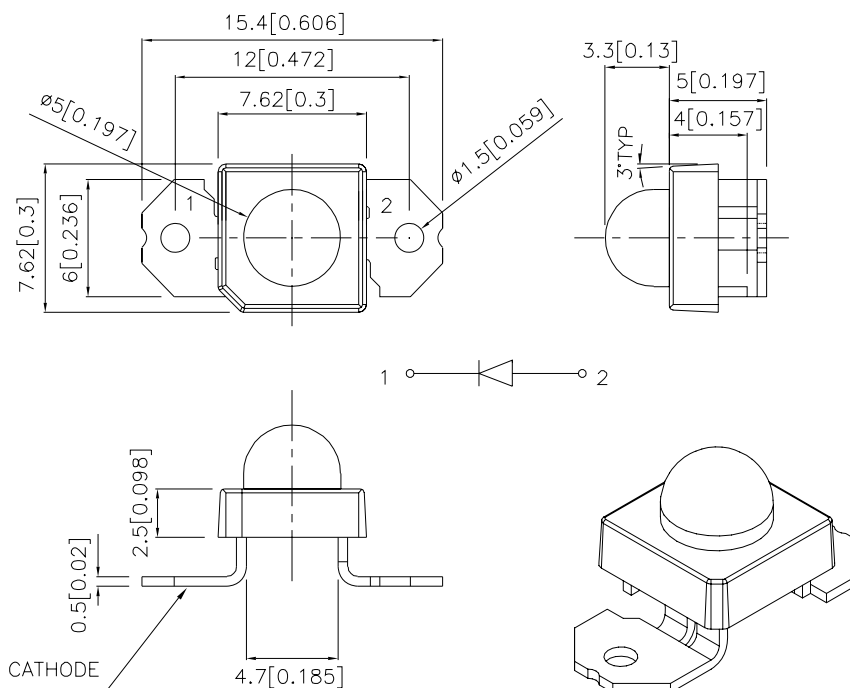
- *Rugged Lighting Products.
- *Electricity savings.
- *Maintenance savings.
- *Environmental Conformance.

Typical Applications

- *Automotive Exterior Lighting.
- *Solid State Lighting and Signaling.



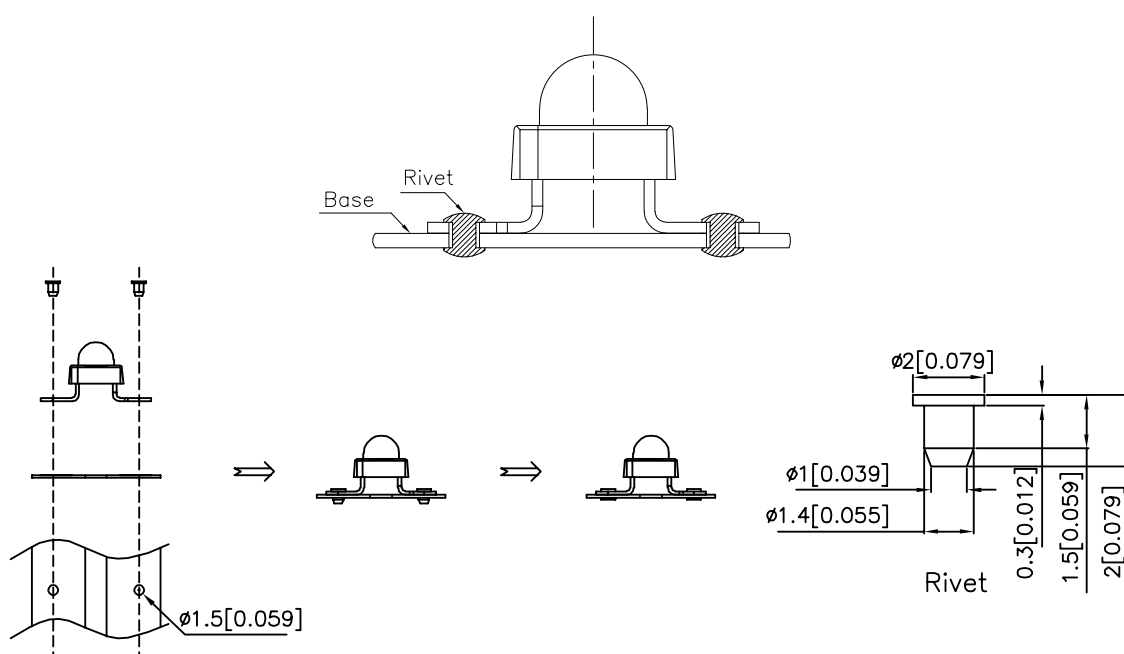
Outline Drawings



Notes:

1. All dimensions are in millimeters (inches).
2. Tolerance is $\pm 0.25(0.01")$ unless otherwise noted.
3. Lead spacing is measured where the leads emerge from the package.
4. Specifications are subject to change without notice.

PATENT PENDING



Absolute Maximum Ratings at TA=25°C

| PARAMETER | SE-H | UNITS |
|-----------------------|------------|-------|
| DC Forward Current | 70 | mA |
| Power dissipation | 217 | mW |
| Reverse Voltage | 5 | V |
| Operating Temperature | -40 To +85 | °C |
| Storage Temperature | -55 To +85 | °C |

Selection Guide

| Part No. | LED COLOR | Iv(cd) ^[1] @70mA | | Viewing Angle ^[2] 2θ1/2 |
|---------------|------------------------|--------------------------------|------|---------------------------------------|
| | | Min. | Typ. | Typ. |
| L-7700C4SEC-H | HYPER ORANGE (InGaAlP) | 6.7 | 12 | 30° |

Notes:

- Luminous intensity is measured with an integrating sphere after the device has stabilized; Luminous intensity / luminous flux: +/-15%.
- θ1/2 is the angle from optical centerline where the luminous intensity is 1/2 the optical centerline value.

Optical Characteristics at TA=25°C

If=70mA Rθj-a=200°C/W

| DEVICE | PEAK WAVELENGTH | DOMINANT ^[1] WAVELENGTH | SPECTRAL LINE WAVELENGTH |
|---------------|--------------------|---------------------------------------|-----------------------------|
| TYPE | λPEAK (nm) TYP. | λDOM (nm) TYP. | Δλ1/2(nm) TYP. |
| L-7700C4SEC-H | 640 | 630 | 25 |

Note:

- The dominant wavelength is derived from the CIE Chromaticity Diagram and represents the perceived color of the device; Wavelength: +/-1nm.

Electrical Characteristics at TA=25°C

| DEVICE TYPE | FORWARD VOLTAGE VF(VOLTS) ^[1] | | | REVERSE CURRENT IR (uA) | CAPACITANCE C (pF) | THERMAL RESISTANCE |
|--------------------|---------------------------------------------|------|------|----------------------------|-----------------------|-----------------------|
| | @ If=70mA | | | @ VR=5V | @ VF=0V F=1MHZ | Rθj-pin °C/W |
| | MIN. | TYP. | MAX. | MAX. | TYP. | TYP. |
| L-7700C4SEC-H | 2.5 | 2.7 | 3.1 | 10 | 27 | 125 |

Note:

- Forward Voltage: +/-0.1V.

Figures

