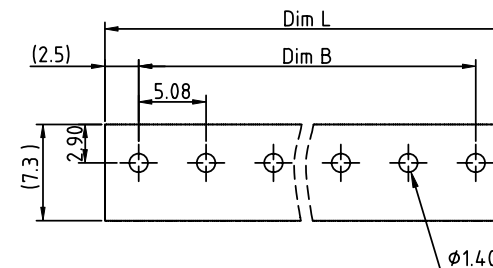
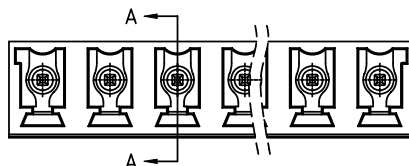
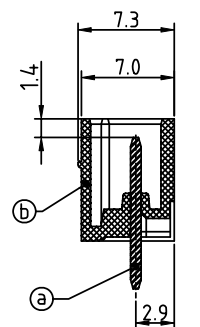
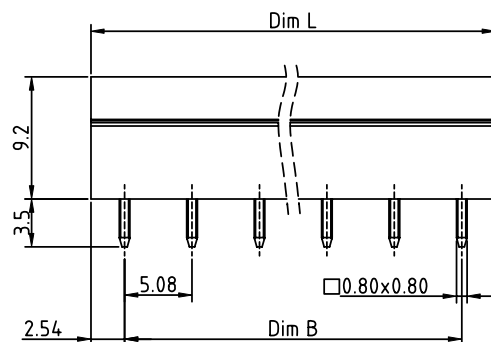


PRODUCT NUMBER	PITCH
VSxx51x000J0G	5.08 mm



RECOMMENDED P.C.B LAYOUT
TOP VIEW



SECTION A-A

Material:

- Item (a) Contact pin: Copper, Tin plated
- Item (b) Terminal(housing): Thermoplastic (UL94V-0)

Electrical:

- Voltage rating: 300V
- Current rating: 8A
- Withstanding Voltage: 1.6 KV
- Operating temperature: -40°C to +115°C
- Soldering temperature: 260°C±5°C/5 Sec
- Safety Approval: cULus

DIMENSION

Dim L	N×5.08
Dim B	(N-1)×5.08

N=Number of poles

Poles	Tolerance
2P-5P	±0.15
6P-10P	±0.25
11P-15P	±0.30
16P-24P	±0.40

PART NO.: VS xx 51 x 0 00J0 G

		Color	RoHS compliant
Solid block	0	Black (RAL9005)	(lead<4%)
No. of poles	2	Red (RAL3001/D)	In copper Alloy
02 2 poles	3	Orange(RAL2011/P)	
03 3 poles	4	Yellow(RAL1018/A)	
... ..	5	Green(RAL6018/T)	
24 24 poles	6	Blue (RAL5015/A)	
	8	Grey(RAL7035/D)	
	9	White(RAL1102)	
	C	Green(RAL6018/U)	

mat'l. code				surface	tolerance	projection	product family		
ltr	ecn	no	dr	date	ASME Y14.5 ✓	ASME Y14.5	TERMINAL BLOCK		
					tolerances unless otherwise specified		title		
					angles	X.±0.5	TERMINAL BLOCK		
					fillet	X.X±0.3	PLUGGABLE SOCKET,CLOSE VERTICAL		
					X°±1°	X.XX±0.1	scale		
					dr	EVIN ZHONG 042214	dwg no		
					enr	EVIN ZHONG 042214	sheet 1 of 1 size		
					chr	HANKE FENG 042214	VSxx51x000J0G		
					appd	SHI JUN 042214	type		
							CUSTOMER Drawing		
sheet index	revision	A							
	sheet	1							