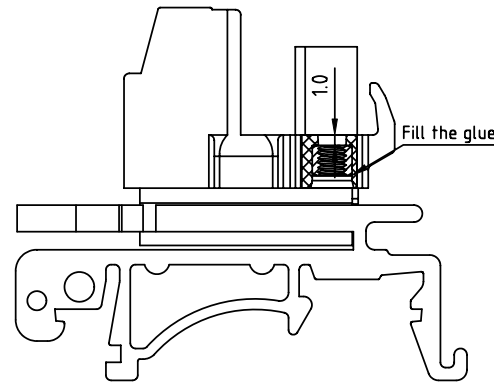
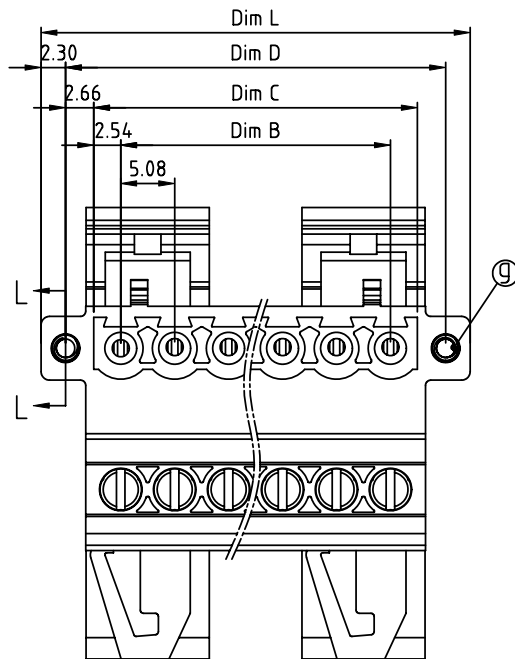
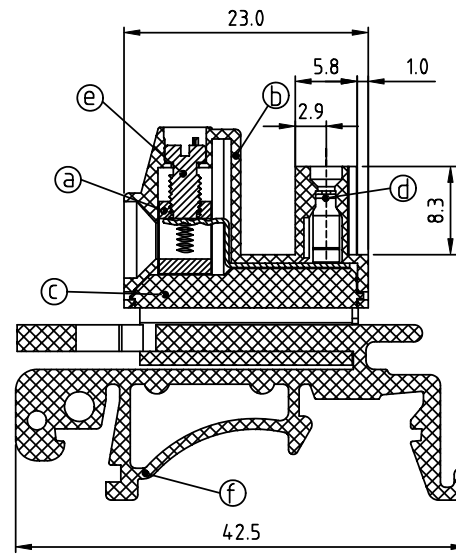
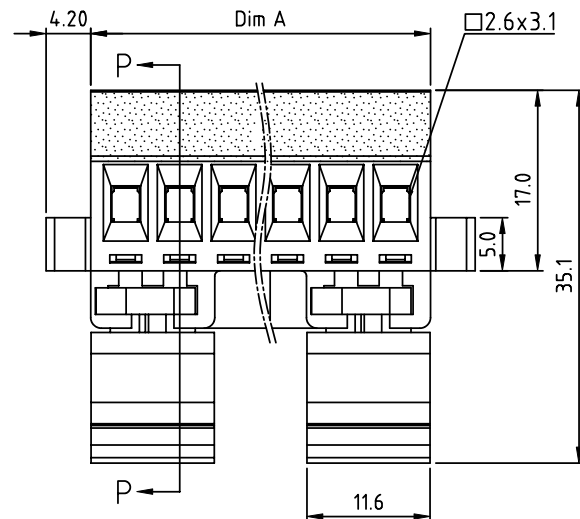


PRODUCT NUMBER	PITCH
V9xx51x500J0G	5.08 mm



SECTION L-L



SECTION P-P

Dimension

Dim L	$(N-1) \times 5.08 + 15.0$
Dim A	$(N-1) \times 5.08 + 6.6$
Dim B	$(N-1) \times 5.08$
Dim C	$N \times 5.08$
Dim D	$(N-1) \times 5.08 + 10.4$

N=Number of poles

Poles	Tolerance
2P - 6P	± 0.15
7P - 12P	± 0.20
13P - 18P	± 0.30
19P - 24P	± 0.40

PART NO.: V9xx51x500J0G





Solid block	No. of poles	Color	RoHS compliant
02 2 poles	2	Black (RAL9005)	(lead<4%)
03 3 poles	3	Red (RAL3001/D)	In copper Alloy
...	...	Orange(RAL2011/P)	
24 24 poles	4	Yellow(RAL1018/A)	
	5	Green(RAL6018/T)	
	6	Blue (RAL5015/A)	
	8	Grey(RAL7035/D)	
	9	White(RAL1102)	
	C	Green(RAL6018/U)	

Material:

- Item ③ Clamp: Brass Ni plated
- Item ⑥ Terminal (housing): Thermoplastic (UL94V-0)
- Item ⑦ Terminal (Cover): Thermoplastic (UL94V-0)
- Item ⑧ Male contact: PhBz, Tin plated.
- Item ⑨ Terminal screw: Steel Zinc plating " - " slot type
- Item ⑩ Terminal(track): Thermoplastic (UL94V-0)
- Item ⑪ With flange nut: Brass M2.5

Electrical: cULus

- Voltage rating:300V
- Current rating: 12A
- Wire range:
- Solid wire(AWG):12-30
- Stranded wire(AWG):12-30
- Torque:5.2Lb-In.
- Screw:M3
- Wire strip length: 6-7 mm
- Withstanding Voltage: 1.6KV
- Operating temperature:-40°C to +115°C
- Safety Approval: cULus

mat'l. code				surface ASME Y14.5 ✓		tolerance ASME Y14.5		projection 		product family TERMINAL BLOCK													
ltr ecn no dr date				tolerances unless otherwise specified								title											
				angles 		X.±0.5		TERMINAL BLOCK															
						X.X±0.3		PLUGGABLE PLUG, WITH FLANGE															
				X*±1°		X.XX±0.1		scale		DINRAIL MOUNTING, B TYPE													
				dr		EVIN ZHONG		050414				dwg no								sheet 1 of 1		size	
				engr		EVIN ZHONG		050414				V9xx51x500J0G								A4			
				chr		HANKE FENG		050414															
				appd		SHI JUN		050414															
sheet index		revision		A																			
		sheet		1																			