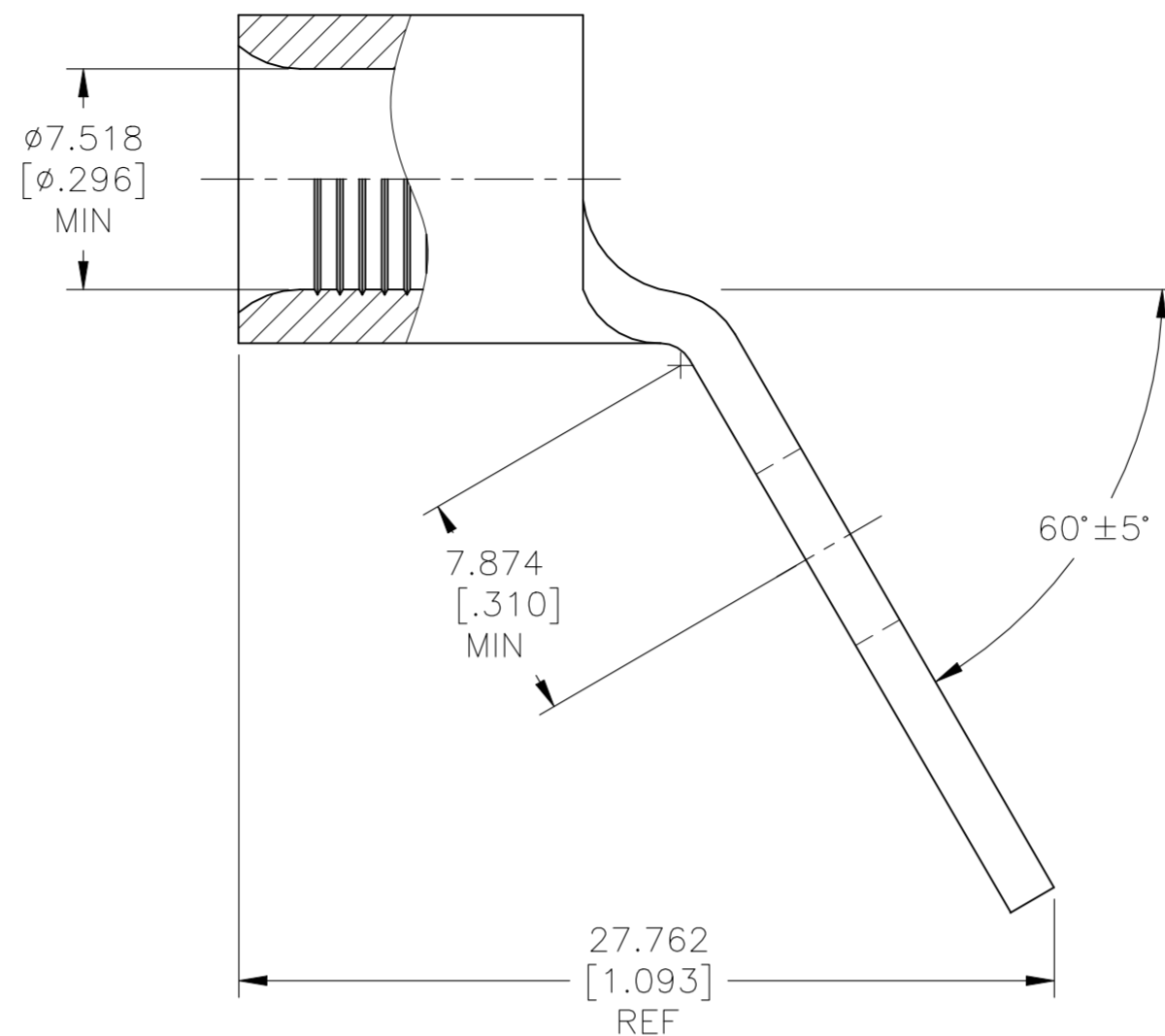
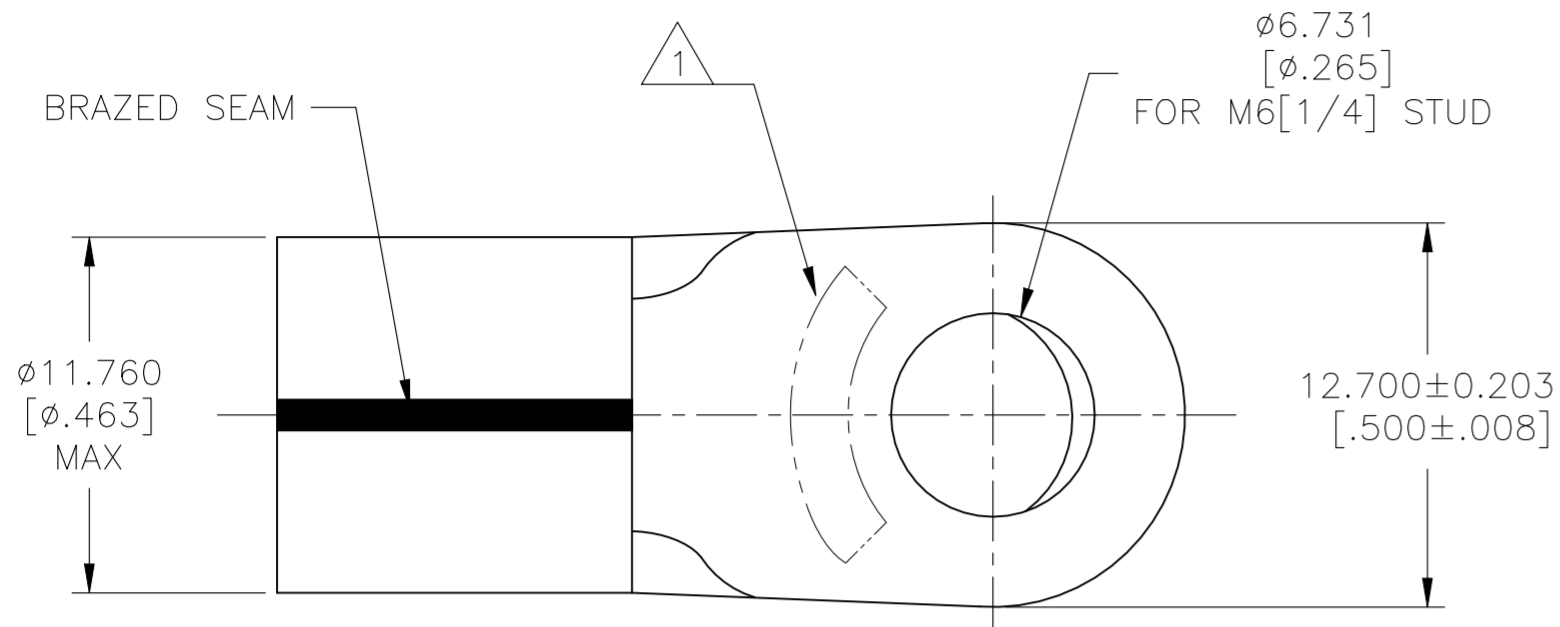


REVISIONS					
P	LTR	DESCRIPTION	DATE	DWN	APVD
C1		REVISED PER ECN-22-176910	29SEP2022	RK	CSD

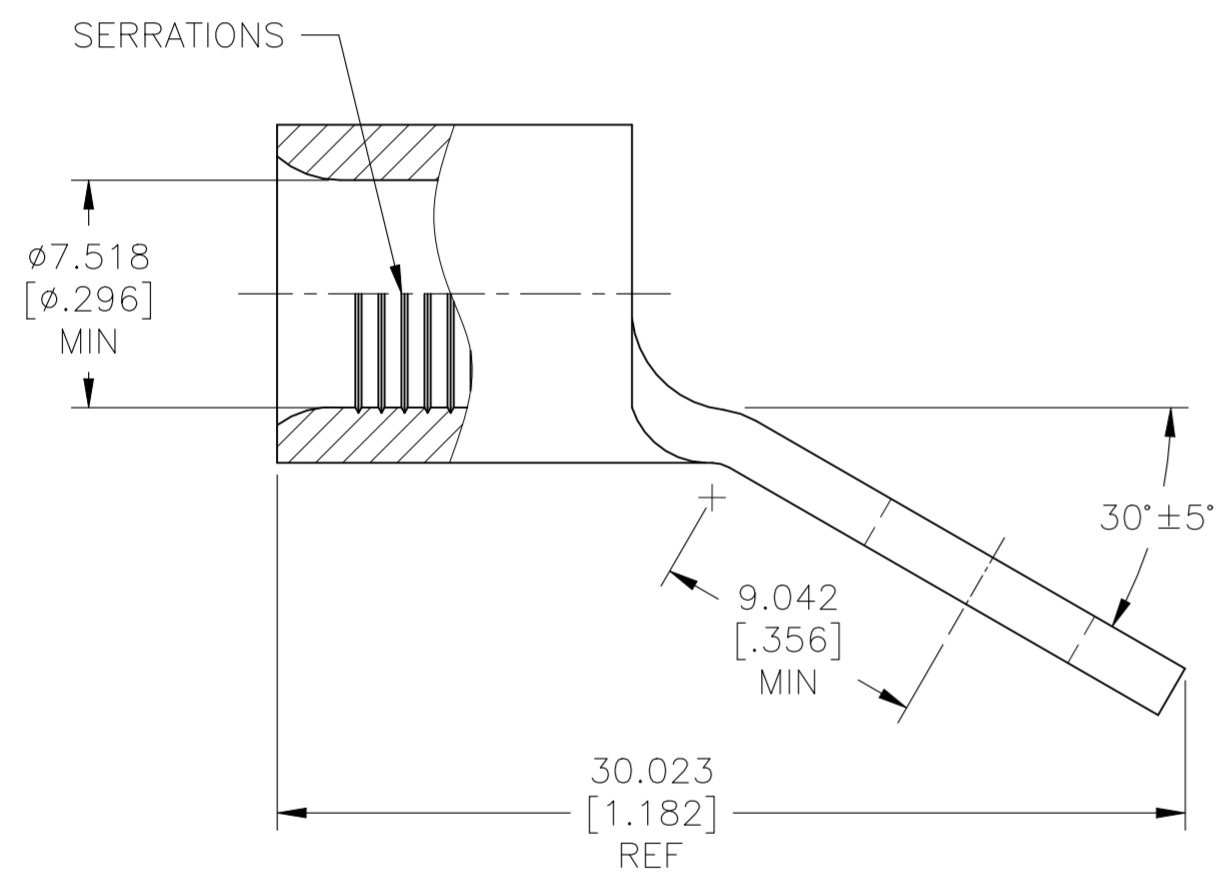


FOR 1958525-4 ONLY

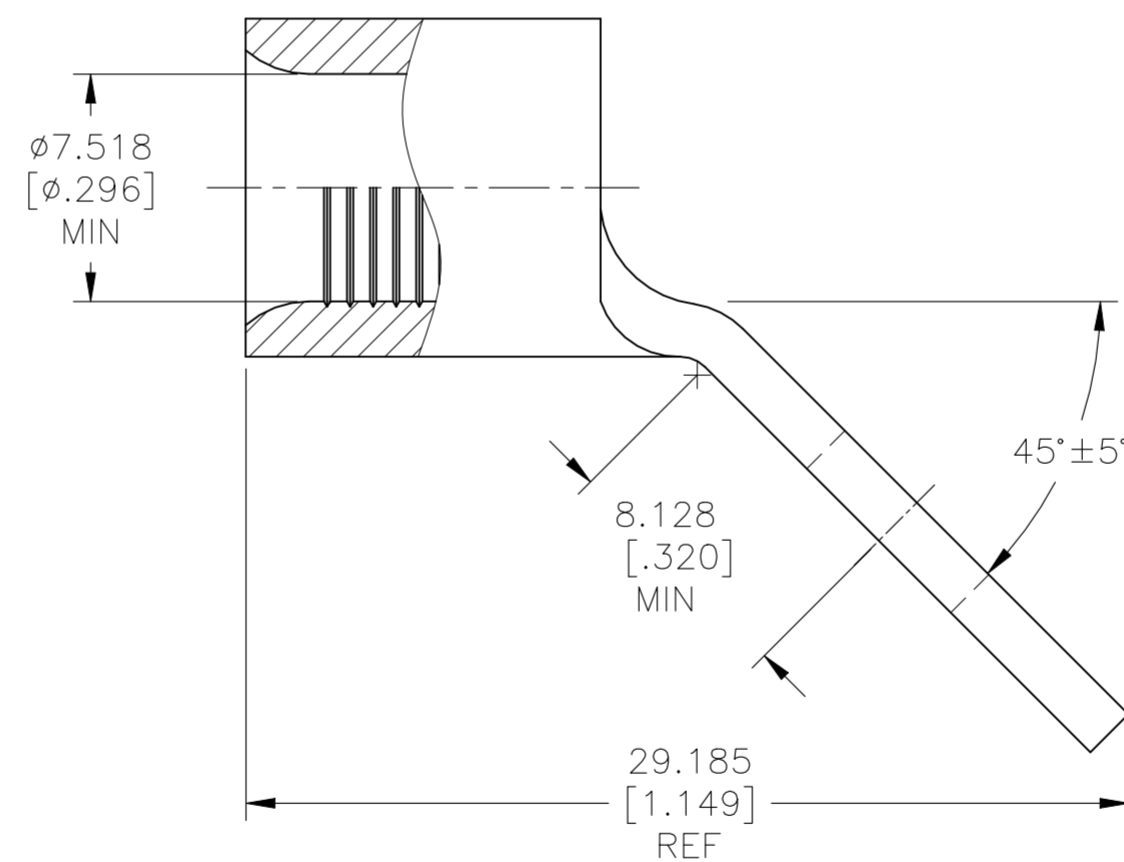
**AMP**  
WIRE RANGE

4 AWG  
SOLID OR STRANDED

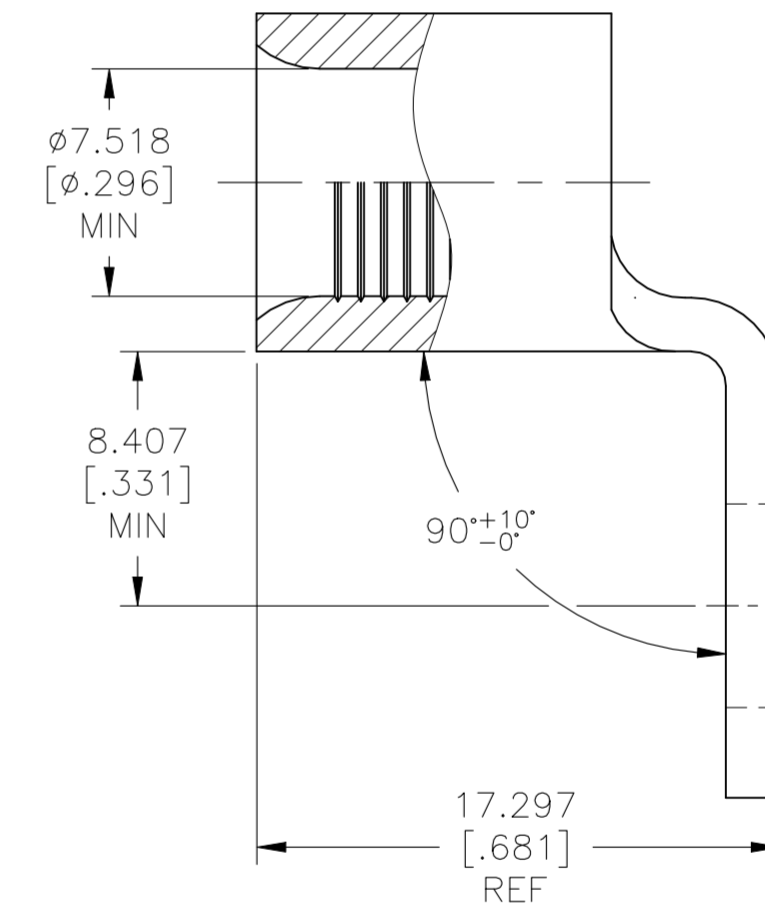
- 1 STAMP AMP 4\* APPROX AS SHOWN.
- 2 MATERIAL THK.  $1.778 \pm 0.076$  [ $.070 \pm .003$ ].
- 3 FINISH: NICKEL PLATE  $0.00762$  [ $.000300$ ] MIN EXT THK PER SAE AMS-QQ-N-290.
- 4 MATERIAL: COPPER PER ASTM B152, ANNEALED



FOR 1958525-1 ONLY



FOR 1958525-2 ONLY



FOR 1958525-3 ONLY

PRELIMINARY	QTY	PACKAGE TYPE	BEND ANGLE	PART NUMBER
	100	LOOSE PIECE	60°	1958525-4
			90°	1958525-3
			45°	1958525-2
			30°	1958525-1

AMP INCORPORATED  
CUSTOMER SERVICE SYSTEMS

MAX RECOMMENDED OPERATING TEMPERATURE:  
 $343^\circ\text{C}$  [ $649^\circ\text{F}$ ]

VOLTAGE RATING:  
NOT APPLICABLE

WIRE CROSS SECTIONAL AREA RANGE:  
 $16.8-26.7\text{mm}^2$  [ $33,100-52,600$ ] CIR MILS  
SOLID OR STRANDED

FOR ADDITIONAL PRODUCT INFORMATION OR COPIES OF DRAWINGS AND TECHNICAL DOCUMENTS

PRODUCT INFORMATION CENTER  
1-800-522-6752

FOR APPLICATION TOOLING INFORMATION

TOOLING ASSISTANCE CENTER  
1-800-722-1111

FOR ORDER ENTRY

1-800-526-5142

THIS DRAWING IS A CONTROLLED DOCUMENT.

DWN	RAVI S	23MAY2018
CHK	ROHDE DANIEL F	23MAY2018
APVD	ROHDE DANIEL F	23MAY2018

TE Connectivity

NAME: 108-32046  
APPLICATION SPEC: 114-2162

SIZE: A2 CAGE CODE: 00779 DRAWING NO: C=1958525

SCALE: 4:1 SHEET: 1 OF 1 REV: C1