

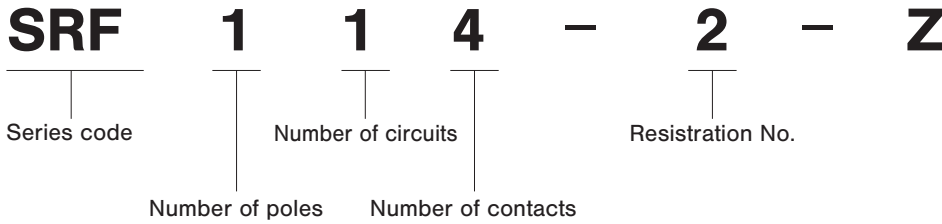
SRF

Miniature Rotary Switches

RoHS Compliant



Part Numbering



Standard Accessories

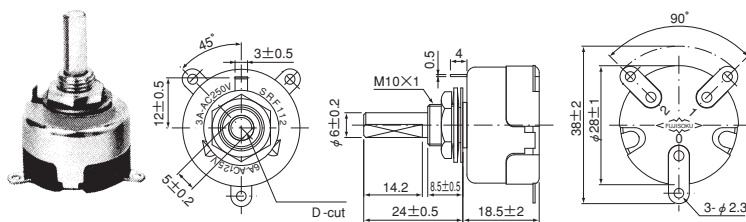
《Supplied with switch》

Part Name	Hex Nut	Lockwasher	Washer
Part No.	① 140008010240	② 140008030056	③ 140008020009
Dimensions			
Finish	—	Zinc plated	Nickel plated

Combinations of Accessories

Part No.	Accessories		
	①	②	③
SRF112	○	○	○
SRF113	○	○	○
SRF114-2	○	○	

☆ SRF112-Z 1-pole 2-positions



Terminal numbers are shown on the bottom of the switch.

Shaft stop positions	Terminal connecting common(c)		Circuit diagram	Number of step	Step angle
	1	2			
1	○			1	90°
2		○			

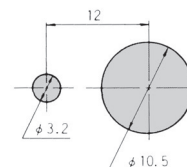
● The circuit diagrams show the switches as viewed from the terminal side with the shaft fully turned in the counterclockwise direction.

Rating	Initial contact resistance	Dielectric strength	Insulation resistance	Electrical life
SRF112-Z AC125V 6A AC250V 3A	20mΩ Max. (DC2~4V 1A)	AC1500V 1 minute	100MΩ Min. (DC500V)	10,000 cycles

● Ratings are based on resistance load.

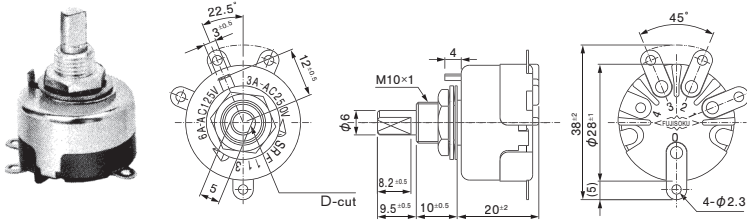
Panel Cut-Out Dimensions

Panel thickness : 3.5 mm max.



☆ : Semi-standard products.

★SRF113-Z 1-pole 3-positions



Terminal numbers are shown on the bottom of the switch.

Shaft stop positions	Terminal connecting common(c)			Circuit diagram	Number of step	Step angle
	1	2	3			
1	○				2	45°
2		○				
3			○			

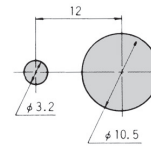
●The circuit diagrams show the switches as viewed from the terminal side with the shaft fully turned in the counter-clockwise direction.

Rating		Initial contact resistance	Dielectric strength	Insulation resistance	Electrical life
SRF113-Z	AC125V 6A AC250V 3A	20mΩ Max. (DC2~4V 1A)	AC1500V 1 minute	100MΩ Min. (DC500V)	5,000 cycles

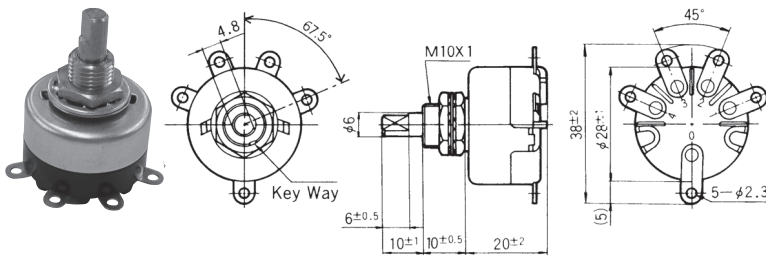
●Ratings are based on resistance load.

■ Panel Cut-Out Dimensions

Panel thickness : 5 mm max.



★SRF114-2-Z 1-pole 4-positions



Terminal numbers are shown on the bottom of the switch.

Shaft stop positions	Terminal connecting common(c)				Circuit diagram	Number of step	Step angle
	1	2	3	4			
1	○					3	45°
2		○					
3			○				
4				○			

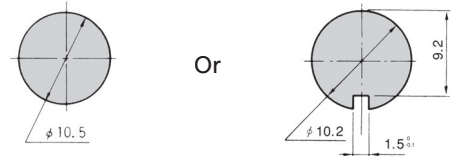
●The circuit diagrams show the switches as viewed from the terminal side with the shaft fully turned in the counter-clockwise direction.

Rating		Initial contact resistance	Dielectric strength	Insulation resistance	Electrical life
SRF114-2-Z	AC125V 3A AC250V 1A	20mΩ Max. (DC2~4V 1A)	AC1500V 1 minute	100MΩ Min. (DC500V)	5,000 cycles

●Ratings are based on resistance load.

■ Panel Cut-Out Dimensions

Panel thickness : 3 mm max.



■ Handling Precautions

1. Soldering Specifications

(1) Manual Soldering

Device : Soldering iron

① 420°C, Max.; 3 seconds, Max.

■ Optional Accessory

1. No dedicated knob is available for the SRF Series products.