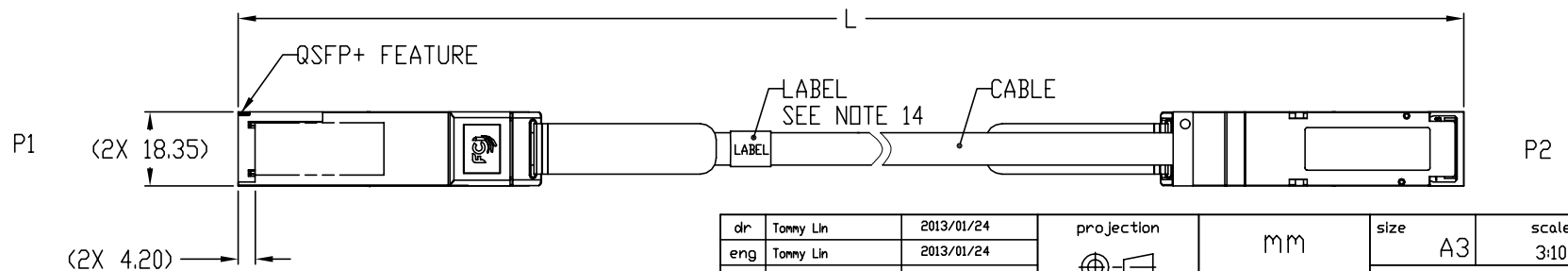
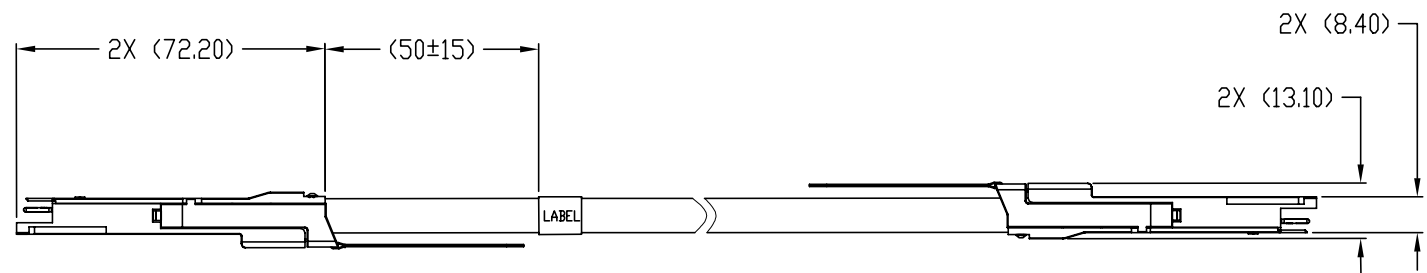
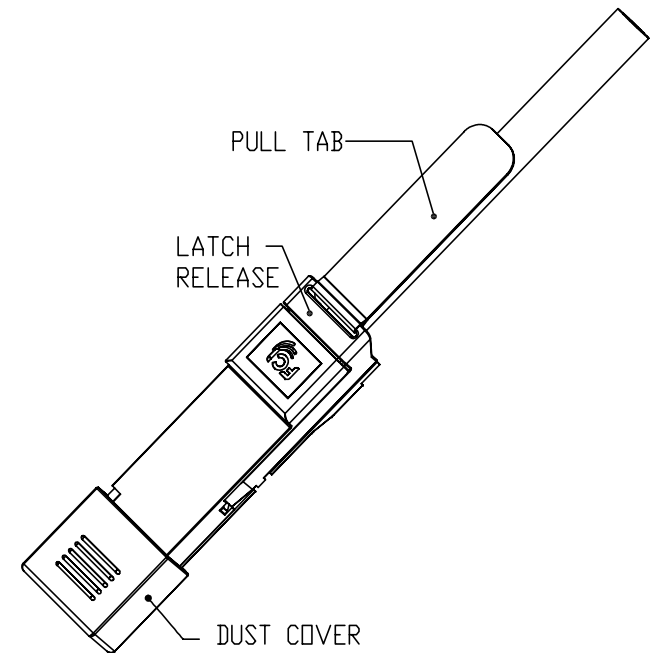
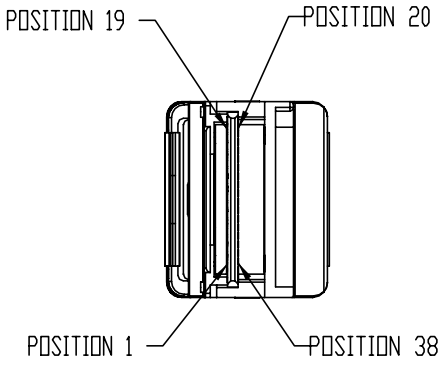


FCI P/N (SEE NOTE 10)	AWG	L(Meter)	NOTE
10124176-3010LF	28	1.0	NON-HALOGEN FREE
10124176-3030LF	28	3.0	
10124176-4050LF	26	5.0	
10124176-5070LF	24	7.0	



dr	Tonny Lin	2013/01/24	projection	mm	size	A3	scale	3:10
eng	Tonny Lin	2013/01/24			ecn no			
chr	Tonny Lin	2013/01/24						
appr	Roger Cheng	2013/01/24	product family	QSFP PLUG	rel level			
			title			10124176		
www.fci.com			cat. no.			rev		
			-			A		

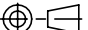




LOW SPEED SIGNALS	
P1 & P2	
POSITION	SYMBOL
8	ModSelL
9	ResetL
10	VccRx
11	SCL
12	SDA
27	ModPrsL
28	IntL
29	VccTx
30	VccI
31	LPMode

TABLE 1

WIRING LIST (SEE NOTE 6)					
END P1			END P2		
POSITION	SYMBOL		POSITION	SYMBOL	
1	GND (TX)	---	20	GND (RX)	
2	TX2n	---	21	RX2n	
3	TX2p	---	22	RX2p	
4	GND (TX)	---	23	GND (RX)	
5	TX4n	---	24	RX4n	
6	TX4p	---	25	RX4p	
7	GND (TX)	---	26	GND (RX)	
13	GND (RX)	⇐	32	GND (TX)	
14	RX3p	⇐	33	TX3p	
15	RX3n	⇐	34	TX3n	
16	GND (RX)	⇐	35	GND (TX)	
17	RX1p	⇐	36	TX1p	
18	RX1n	⇐	37	TX1n	
19	GND (RX)	⇐	38	GND (TX)	
20	GND (RX)	⇐	1	GND (TX)	
21	RX2n	⇐	2	TX2n	
22	RX2p	⇐	3	TX2p	
23	GND (RX)	⇐	4	GND (TX)	
24	RX4n	⇐	5	TX4n	
25	RX4p	⇐	6	TX4p	
26	GND (RX)	⇐	7	GND (TX)	
32	GND (TX)	---	13	GND (RX)	
33	TX3p	---	14	RX3p	
34	TX3n	---	15	RX3p	
35	GND (TX)	---	16	GND (RX)	
36	TX1p	---	17	RX1p	
37	TX1n	---	18	RX1n	
38	GND (TX)	---	19	GND (RX)	
SHIELD		-----	SHIELD		

TABLE 2

dr	Tonny Lin	2013/01/24	<div>projection</div> 	<div>mm</div> 	size	A3	scale	3:10
eng	Tonny Lin	2013/01/24			ecn no			
chr	Tonny Lin	2013/01/24			rel level			
appr	Roger Cheng	2013/01/24	product family		QSFP PLUG			
	title				no	10124176		rev
www.fci.com	cat. no.	-	Product - Customer Drw				sheet 2 of 3	



Copyright FCI.

## NOTES:

## 1- MATERIAL:

CASTINGS: ZINC ALLOY/ COPPER UNDERPLATE/ NICKEL OVERPLATE  
PULL TAB: THERMOPLASTIC POLYMER  
LATCH RELEASE: ZINC DIECAST, NICKEL OVERPLATE  
DRIVE SCREWS: STAINLESS STEEL  
STRAIN RELIEF COLLAR: BRASS  
SPRING: STAINLESS STEEL  
LOCTITE  
PADDLE CARD: PRINTED CIRCUIT SUBSTRATE

2- THIS PRODUCT MEETS THE RESTRICTION OF HAZARDOUS SUBSTANCES IN ELECTRICAL AND ELECTRONIC EQUIPMENT (RoHS) "Directive 2011/65/EU" .

3- THIS DIMENSION 'L' IS A FINISHED PRODUCT LENGTH.

4- UNLESS OTHERWISE SPECIFIED ASSEMBLED LENGTH TOLERANCE IS:

L	TOLERANCE
≤ 1M	± 25mm
1M-10M	± 1/2L
≥ 10M	+ 0/- 1/4L

5- ALL CABLE ASSEMBLIES SHALL BE 100% TESTED FOR CONTINUITY AS DEFINED IN WIRING LIST.

6- IMPEDANCE: 100  $\Omega$  DIFFERENTIAL.

7- OTHER TESTING PERFORMED AS REQUIRED BY PRODUCT SPECIFICATION: GS-12-622.

8- PACKAGING OF LEAD FREE PRODUCTS MEETS LABELING AND PACKAGING PER SPECIFICATION GS-14-920.  
PACKAGE CABLE ASSEMBLIES PER GS-14-1272. DUST CAPS ARE TO BE ASSEMBLED PRIOR TO PACKAGING.  
FCI PACKAGE TRACKING BAG LABEL IS ONLY FOR REFERENCE.

9- A "△" SYMBOL WILL BE NEXT TO ANY DIMENSION, VIEW, OR NOTE WHICH HAS BEEN MODIFIED WITH THE CURRENT DRAWING REVISION. THE CURRENT REVISION WILL BE SHOWN IN THE SYMBOL.

10- HALOGEN FREE RAW CABLE CAN BE USED AS A SUBSTITUTE ON NON-HF PRODUCT NUMBERS.

11- LONGER LENGTH APPLICATIONS REQUIRE HOST SYSTEM PREEMPHASIS AND/OR EQUALIZATION.

12- EACH CABLE WILL BE PACKAGED IN A ESD BAG INDIVIDUALLY.

13- LABEL FOR CABLE CONTENTS AS BELOW.

FCI, MADE IN CHINA  
FCI P/N  
REVISION  
SERIAL NUMBER

EXAMPLE

FCI, MADE IN CHINA  
10124176-3010LF  
REV.A  
CN1323QP103L0001

FONT SHALL BE CLEARLY VISIBLE AND BLACK IN COLOR.

SERIAL NUMBER IS ONLY USED FOR TRACKING PRODUCT :

CN1323QP103L0001

CN PRESENT MADE IN CHINA

YYWW(YEAR AND WEEK)

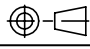


PRESENT PRODUCT BASE NUMBER(USE "QP")

SEQUENCE NUMBER(0001~9999)

L IS NON-HALOGEN FREE TYPE

CABLE AWG(3 IS 28AWG; 4 IS 26AWG; 5 IS 24AWG)

LENGTH(10 IS 1.0 METER,30 IS 3.0 METERS,ETC)

dr	Tommy Lin	2013/01/24	projection 	mm 	size	A3	scale	3:10		
eng	Tommy Lin	2013/01/24			ecn no					
chr	Tommy Lin	2013/01/24			rel level					
appr	Roger Cheng	2013/01/24	product family		QSFP PLUG					
			title		QSFP+ (PASSIVE) ASSEMBLY		dwg no	10124176	rev	A
www.fci.com			cat. no.		-		Product - Customer Drw		sheet 3 of 3	