



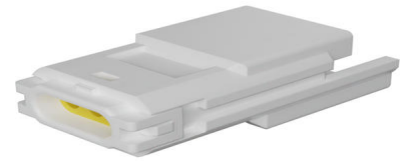
Part Number : [521160340](#)

Product Description : Mizu-P25 2.50mm Pitch
Waterproof Wire-to-Wire Plug Housing, 3 Circuits,
White

Series Number : 52116

Status : Active

Product Category : Connector Housings



Documents and Resources

Drawings

[521160340 sd.pdf](#)

3D Models and Design Files

[STEP AP242](#)

[SOLIDWORKS](#)

[Creo](#)

Specifications

[AS-52117-001-001.pdf](#)


[AS-52117-001-JP-001.pdf](#)

[521160000-P00.pdf](#)

[PS-52116-001-001.pdf](#)

Product Environment Compliance

Compliance

GADSL/IMDS	Compliant
China RoHS	 per SJ/T 11365-2006
EU ELV	Compliant per 2000/53/EC
Low-Halogen Status	Not Low-Halogen per IEC 61249-2-21
REACH SVHC	Not Contained per D(2025)6375-DC (05 Nov 2025)
EU RoHS	Compliant per EU 2015/863

Compliance Statements

- EU RoHS
- REACH SVHC
- Low-Halogen

Industry Documents

- IPC 1752A Class C
- IPC 1752A Class D
- Molex Product Compliance Declaration
- IEC-62474
- chemSHERPA (xml)

Substances of Interest

- PFAS

EU RoHS Certificate of Compliance

Additional Product Compliance Information

Part Details

General

Status	Active
Category	Connector Housings
Series	52116
Description	Mizu-P25 2.50mm Pitch Waterproof Wire-to-Wire Plug Housing, 3 Circuits, White
Application	Signal, Wire-to-Wire
Product Name	Mizu-P25 Waterproof,Splash Proof
UPC	800754368520

Agency

UL	E29179
----	--------

Physical

Circuits (maximum)	3
Color - Resin	White
Gender	Plug
Glow-Wire Capable	No
Lock to Mating Part	Yes

Material - Resin	Polyester
Net Weight	1565.500/mg
Number of Rows	1
Packaging Type	Tray
Panel Mount	No
Pitch - Mating Interface	2.50mm
Stackable	No
Temperature Range - Operating	-40° to +105°C

Solder Process Data

Lead-Free Process Capability	N/A
------------------------------	-----

Mates With / Use With

Mates with Part(s)

Description	Part Number
Mizu-P25 Waterproof Receptacle Housings	52117

Use with Part(s)

Description	Part Number
Mizu-P25 Male Crimp Terminals	50038

Application Tooling

Global

Description	Part Number
Sealing Cap Hand Tool	622024400

Japan

Description	Part Number
Sealing Cap Attachment Tool	571306000

This document was generated on Dec 29, 2025