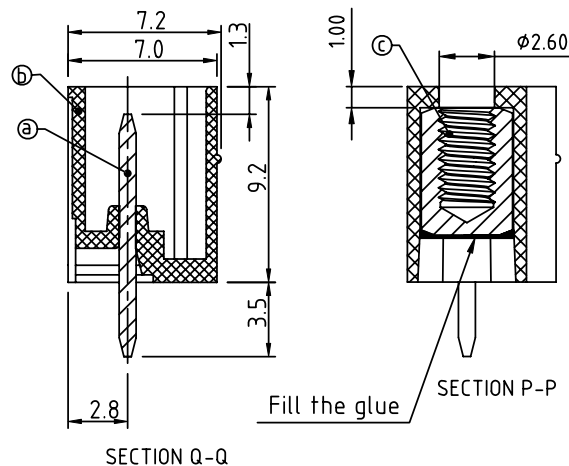
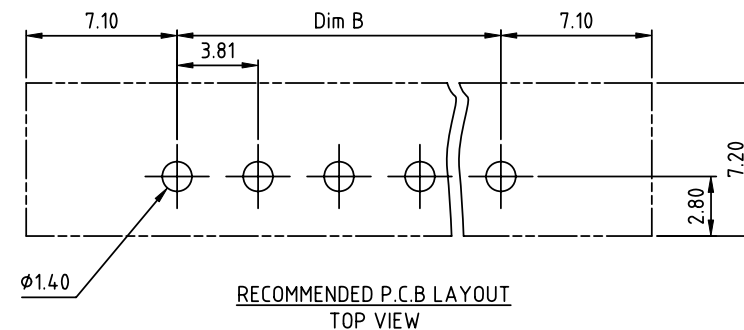
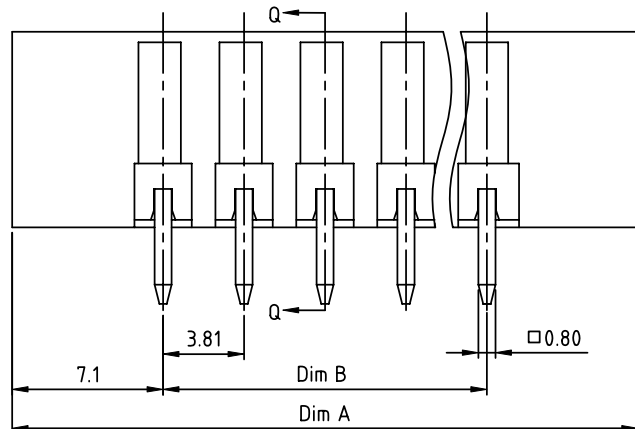
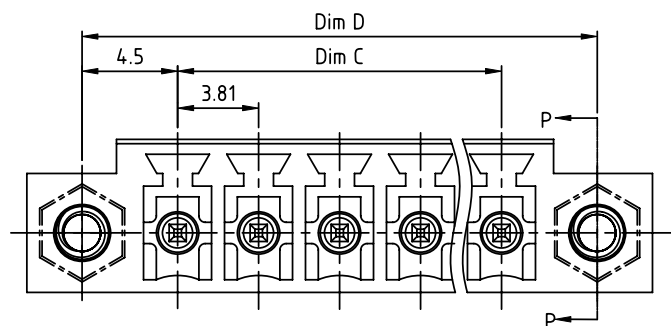


PRODUCT NUMBER	PITCH
OQxx35x000J0G	3.81 mm



## Material:

- Item ① Male contact pin: Copper Tin plated
- Item ② Terminal housing: Thermoplastic (UL94V-0)
- Item ③ Flange nut: Brass M2.5

## Electrical:

cULus /VDE

- Voltage rating: 300V/300V
- Current rating: 10A/10.5A
- Withstanding Voltage: 1.6 KV/2.5KV
- Operating temperature: -40°C to +115°C
- Soldering temperature: 260°C±5°C/5 Sec
- Safety Approval: cULus VDE

## DIMENSION

Dim A	(N-1)×3.81+14.2
Dim B&C	(N-1)×3.81
Dim D	(N-1)×3.81+9.0

N= Number of poles

Poles	Tolerance
2p-6p	±0.15
7p-12p	±0.20
13p-16p	±0.25
17p-24p	±0.30

PART NO.: OQ xx 3 5 x 0 00J0 G

No. of poles	Body Color	RoHS compliant (lead<4%) In copper Alloy
02 2 poles	0 Black (RAL9005)	
03 3 poles	2 Red (RAL3001/D)	
...	3 Orange(RAL2011/P)	
24 24 poles	4 Yellow(RAL1018/A)	
	5 Green(RAL6018/T)	
	6 Blue (RAL5015/A)	
	8 Grey(RAL 7035/D)	
	9 White(RAL1102)	
	C Green(RAL6018/U)	

mat'l. code				surface ASME Y14.5	tolerance ASME Y14.5	projection MM	product family TERMINAL BLOCK	
ltr	ecn	no	dr	date	tolerances unless otherwise specified	angles	title TERMINAL BLOCK	
						X±0.5	PLUGGABLE SOCKET, WITH FLANGE, VERTICAL	
						X.X±0.3	dwg no	
						X.XX±0.1	sheet 1 of 1 size	
					dr	HANKE FENG 032714	A4	
					enrg	HANKE FENG 032714	OQxx35x000J0G	
					chr	SHI JUN 032714	type	
					appd	SHI JUN 032714	CUSTOMER Drawing	
sheet index	revision	sheet		A				