



**Part Number :** [15246060](#)

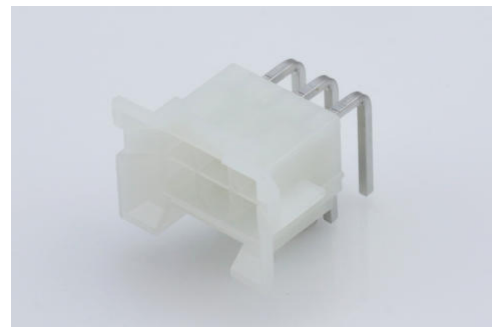
**Product Description :** Mini-Fit BMI Header, Dual Row, Right-Angle, with Snap-in Plastic Peg PCB Lock, 6 Circuits, PA Polyamide Nylon 6/6, UL 94V-2, with Tin (Sn) Plating

**Series Number :** 42404

**Status :** Active

**Product Category :** PCB Headers and Receptacles

**Engineering Part Number :** A-42404-06A1



---

## Documents and Resources

### Drawings

[015246060\\_sd.pdf](#)

[PK-42404-002-001.pdf](#)

### 3D Models and Design Files

[STEP AP242](#)

[SOLIDWORKS](#)

[Creo](#)

[Symbol and Footprint \(Multi-Format\)](#)

[SYM-A42404-06XX-001.zip](#)

### Specifications

[424040001-AS-000.pdf](#)

[PS-45750-001-001.pdf](#)

[55560002-PS-CH-000.pdf](#)

[55560002-PS-ES-000.pdf](#)

[55560002-PS-SK-000.pdf](#)

[PS-5556-002-001.pdf](#)


[TS-42404-001-001.pdf](#)

[TS-5556-002-001.pdf](#)

---

## Product Environment Compliance

### Compliance

GADSL/IMDS	Compliant with Exemption 44; 33
China RoHS	 per SJ/T 11365-2006
EU ELV	Not Relevant
Low-Halogen Status	Low-Halogen per IEC 61249-2-21
REACH SVHC	Not Contained per D(2025)6375-DC (05 Nov 2025)
EU RoHS	Compliant per EU 2015/863

### Compliance Statements

- EU RoHS
- REACH SVHC
- Low-Halogen

### Industry Documents

- IPC 1752A Class C
- IPC 1752A Class D
- Molex Product Compliance Declaration
- IEC-62474
- chemSHERPA (xml)

### Substances of Interest

- PFAS

### EU RoHS Certificate of Compliance

### Additional Product Compliance Information

## Part Details

### General

Status	Active
Category	PCB Headers and Receptacles
Series	42404
Description	Mini-Fit BMI Header, Dual Row, Right-Angle, with Snap-in Plastic Peg PCB Lock, 6 Circuits, PA Polyamide Nylon 6/6, UL 94V-2, with Tin (Sn) Plating
Application	Board-to-Board, Power, Wire-to-Board
Comments	Current = 13A max. per circuit when header is mated to a receptacle loaded with 45750

	Mini-Fit Plus HCS Crimp Terminal Crimped to 16 AWG wire. See Molex product specification PS-45750-001 for additional current de-rating information.
Component Type	PCB Header
Product Name	Mini-Fit BMI
UPC	800753689077

### Agency

CSA	LR19980
UL	E29179

### Electrical

Current - Maximum per Contact	13.0A
Voltage - Maximum	600V

### Physical

Breakaway	No
Circuits (Loaded)	6
Circuits (maximum)	6
Color - Resin	Natural
Durability (mating cycles max)	30
First Mate / Last Break	No
Glow-Wire Capable	No
Guide to Mating Part	Yes
Lock to Mating Part	Yes
Material - Metal	Brass
Material - Plating Mating	Tin
Material - Plating Termination	Tin
Material - Resin	Nylon
Net Weight	2.976/g
Number of Rows	2
Orientation	Right Angle
Packaging Type	Tray
PCB Locator	Yes

PCB Retention	Yes
PCB Thickness - Recommended	1.80mm
PC Tail Length	3.30mm
Pitch - Mating Interface	4.20mm
Plating min - Mating	2.540µm
Plating min - Termination	2.540µm
Polarized to Mating Part	Yes
Polarized to PCB	Yes
Shrouded	Partial
Stackable	No
Temperature Range - Operating	-40° to +105°C
Termination Interface Style	Through Hole

### Solder Process Data

Max-Duration	5
Lead-Free Process Capability	WAVE
Max-Cycle	1
Max-Temp	240

---

### Mates With / Use With

#### Mates with Part(s)

Description	Part Number
Mini-Fit BMI Receptacle Housing, 4.20mm Pitch, Dual Row with Panel Mount Ears, Nylon, UL 94V-2, 6 Circuits	<a href="#"><u>15060060</u></a>
Mini-Fit BMI Receptacle Header, 4.20mm Pitch, Dual Row, Vertical, with Snap-In Plastic Pegs, Brass Terminal, Matte Tin (Sn) Plating, Nylon UL 94V-2, 6 Circuits	<a href="#"><u>15247060</u></a>
Mini-Fit Jr. Receptacle Housing, Dual Row, 6 Circuits, UL 94V-2, Natural	<a href="#"><u>39012060</u></a>
Mini-Fit HCS Receptacle Header, 4.20mm Pitch, Dual Row, Vertical,	<a href="#"><u>444750611</u></a>

Blind Mating, with Snap-in Plastic Pegs, 6 Circuits	
Mini-Fit Jr.-to-Mini-Fit Jr. Off-the-Shelf (OTS) Overmolded Cable Assemblies	<u>245135</u>

---

This document was generated on Dec 12, 2025