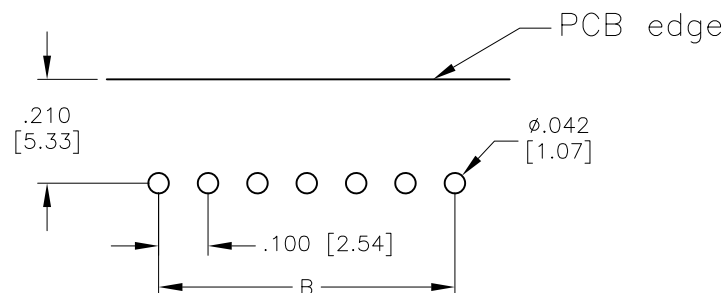
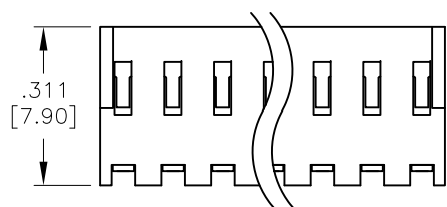
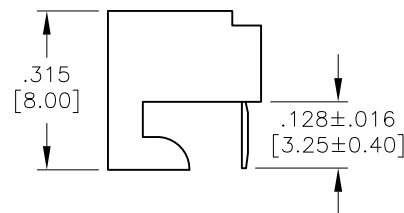
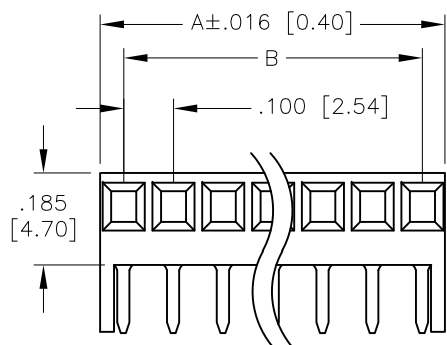


APPROVED: \_\_\_\_\_  
 DATE: \_\_\_\_\_ TITLE: \_\_\_\_\_

Rev	AWO #	Description	Date	Appr
-		RELEASED	6/2/05	
A		REDRAWN	10/5/11	
B		UPDATE TOLERANCE	1/29/21	LH/YC



RECOMMENDED  
PCB LAYOUT

#### SPECIFICATIONS:

Material:

Insulator: Nylon, rated UL 94V-0

Insulator color: White

Contacts: Phosphor Bronze

Plating:

Tin over Copper underplate overall

Electrical:

Voltage rating: 250 V

Current rating: 2.5 Amp max.

Contact resistance: 20 mohms max. initial

Insulation resistance: 5000 Mohms min.

Dielectric withstanding voltage: 1,500 VAC for 1 minute

Mechanical:

Recommended PCB thickness: 0.062" (1.57mm)

Temperature Rating:

0°C to +75°C

Environmental:

Lead free, RoHS compliant



Positions: 02 thru 25

A = .100 [2.54] x No. of Spaces + .096 [2.44]

B = .100 [2.54] x No. of Spaces

UNLESS OTHERWISE SPECIFIED  
 ALL DIMENSIONS ARE INCHES [MM]  
 TOLERANCES: EXCEPT AS NOTED  
 INCHES HOLES  
 .X ± .10 Ø.X ± .10  
 .XX ± .020 Ø.XX ± .015  
 .XXX ± .015 Ø.XXX ± .010

APPROVALS		DATE
DRAWN	SS	6/2/05
CHECKED		
APPROVED		

**ADAM**  
**TECH**

909 Rahway Avenue,  
 Union, NJ 07083  
 Phone: 908-687-5000  
 Fax: 908-687-5710

TITLE  
 .100 [2.54] PCB CONNECTOR  
 BOARD HOOKS, SIDE ENTRY

SIZE X	PART NO. PCE-B-XX	REV. B
REF: S00123T	SCALE: NTS	SHEET 1 OF 1