



Part Number : [10844060](#)

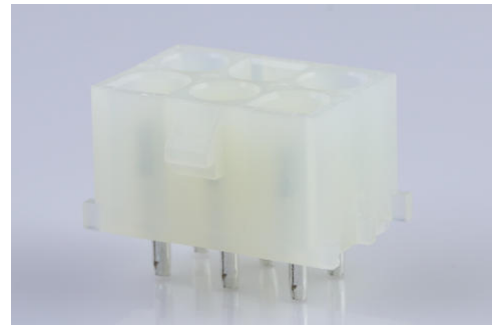
Product Description : 6.35mm Pitch MLX Power Connector Header, Vertical, 6 Circuits, PA Polyamide Nylon 6/6 94V-2, Tin (Sn) Plating, White

Series Number : 42002

Status : Active

Product Category : PCB Headers and Receptacles

Engineering Part Number : A-42002-6A1A1



Documents and Resources

Drawings

[010844060 sd.pdf](#)

[PK-43255-001-001.pdf](#)

[PK-43255-003-001.pdf](#)

3D Models and Design Files

[STEP AP242](#)

[SOLIDWORKS](#)

[Creo](#)


[Symbol and Footprint \(Multi-Format\)](#)

Specifications

[PSX-42002-0001-001.pdf](#)

Product Environment Compliance

Compliance

GADSL/IMDS	Not Relevant
China RoHS	 per SJ/T 11365-2006
EU ELV	Not Relevant
Low-Halogen Status	Low-Halogen per IEC 61249-2-21
REACH SVHC	Not Contained per D(2025)7771-DC (04 Feb 2026)
EU RoHS	Compliant per EU 2015/863

Compliance Statements

- EU RoHS
- REACH SVHC
- Low-Halogen

Industry Documents

- IPC 1752A Class C
- IPC 1752A Class D
- Molex Product Compliance Declaration
- IEC-62474
- chemSHERPA (xml)

Substances of Interest

- PFAS

EU RoHS Certificate of Compliance

Additional Product Compliance Information

Part Details

General

Status	Active
Category	PCB Headers and Receptacles
Series	42002
Description	6.35mm Pitch MLX Power Connector Header, Vertical, 6 Circuits, PA Polyamide Nylon 6/6 94V-2, Tin (Sn) Plating, White
Application	Wire-to-Board
Comments	Solder Type
Component Type	PCB Header
Product Name	MLX
UPC	800753610835

Agency

CSA	LR19980
UL	E29179

Electrical

Current - Maximum per Contact	13.5A, 20.0A
-------------------------------	--------------

Physical

Breakaway	No
Circuits (Loaded)	6
Circuits (maximum)	6
Color - Resin	Natural
Durability (mating cycles max)	50
First Mate / Last Break	No
Gender	Male
Glow-Wire Capable	No
Guide to Mating Part	Yes
Keying to Mating Part	Yes
Lock to Mating Part	Yes
Material - Metal	Phosphor Bronze
Material - Plating Mating	Tin
Material - Plating Termination	Tin
Material - Resin	Nylon
Mounting Style	Through Hole
Net Weight	3.398/g
Number of Rows	3
Orientation	Vertical
Packaging Type	Bag
PCB Retention	Yes
PCB Thickness - Recommended	1.57mm
PC Tail Length	4.27mm
Pitch - Mating Interface	6.35mm
Pitch - Termination Interface	6.35mm
Plating min - Mating	3.560µm
Plating min - Termination	3.560µm
Polarized to PCB	Yes
Shrouded	Shrouded
Temperature Range - Operating	-55° to +105°C
Termination Interface Style	Through Hole

Solder Process Data

Max-Duration	10
Lead-Free Process Capability	WAVE

Max-Temp	260
----------	-----

Mates With / Use With

Mates with Part(s)

Description	Part Number
2.13mm Diameter MLX Power Crimp Housing Plugs	<u>42021</u>

This document was generated on Jun 06, 2026