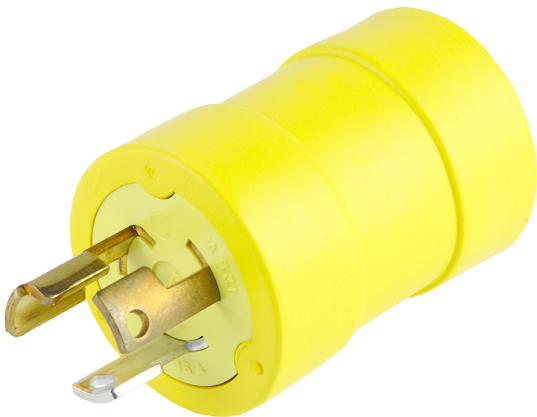




**Part Number :** 1301510014  
**Product Description :** Super-Safeway Adapter  
NEMA 5-15 Receptacle - Female End  
15A/125V, NEMA L5-15 Plug - Male End,  
15A/125V  
**Series Number :** 130151  
**Status :** Active  
**Product Category :** Wiring Devices  
**Engineering Number :** 1705



## Product Environment Compliance

### Compliance

GADSL/IMDS	Not Relevant
China RoHS	Not Reviewed per SJ/T 11365-2006
EU ELV	Not Relevant
Low-Halogen Status	Not Reviewed per IEC 61249-2-21
REACH SVHC	Not Reviewed per D(2024)7663-DC (21 Jan 2025)
EU RoHS	Not Reviewed per EU 2015/863

### Multiple Part Product Compliance Statements

- Eu RoHS
- REACH SVHC
- Low-Halogen

### Multiple Part Industry Compliance Documents

- IPC 1752A Class C
- IPC 1752A Class D
- Molex Product Compliance Declaration
- IEC-62474
- chemSHERPA (xml)

### EU RoHS Certificate of Compliance

## Part Details

## General

Status	Active
Category	Wiring Devices
Series	130151
Description	Super-Safeway Adapter NEMA 5-15 Receptacle - Female End 15A/125V, NEMA L5-15 Plug - Male End, 15A/125V
IP Rating	IP67
NEMA Configuration	NEMA L5-15
Product Name	Super-Safeway
Specialty	N/A
Type	Adapter
UPC	78678875006

## Agency

CSA	LR6837
UL	E10176

## Electrical

Current - Maximum per Contact	50.0A
GFCI	No
Voltage - Maximum	125V

## Physical

Cord Type	N/A
Flange	No
Flip Lid	No
Gender	Male-Female
Length	N/A
Lighted Connector	No
Locking Blade	Yes
Net Weight	1959.000/g
Poles	2-pole/3-wire
Receptacle Type	N/A

---

---

This document was generated on Apr 20, 2025