

NTK3043N

MOSFET – Power, N-Channel with ESD Protection, SOT-723 20 V, 285 mA

Features

- Enables High Density PCB Manufacturing
- 44% Smaller Footprint than SC-89 and 38% Thinner than SC-89
- Low Voltage Drive Makes this Device Ideal for Portable Equipment
- Low Threshold Levels, $V_{GS(TH)} < 1.3$ V
- Low Profile (< 0.5 mm) Allows It to Fit Easily into Extremely Thin Environments such as Portable Electronics
- Operated at Standard Logic Level Gate Drive, Facilitating Future Migration to Lower Levels Using the Same Basic Topology
- These are Pb-Free and Halogen-Free Devices

Applications

- Interfacing, Switching
- High Speed Switching
- Cellular Phones, PDAs

MAXIMUM RATINGS ($T_J = 25^\circ\text{C}$ unless otherwise stated)

Parameter			Symbol	Value	Unit
Drain-to-Source Voltage			V _{DSS}	20	V
Gate-to-Source Voltage			V _{GS}	±10	V
Continuous Drain Current (Note 1)	Steady State	T _A = 25°C	I _D	255	mA
		T _A = 85°C		185	
	t ≤ 5 s	T _A = 25°C		285	
Power Dissipation (Note 1)	Steady State	T _A = 25°C	P _D	440	mW
	t ≤ 5 s			545	
Continuous Drain Current (Note 2)	Steady State	T _A = 25°C	I _D	210	mA
		T _A = 85°C		155	
Power Dissipation (Note 2)		T _A = 25°C	P _D	310	mW
Pulsed Drain Current	t _p = 10 μs		I _{DM}	400	mA
Operating Junction and Storage Temperature			T _J , T _{STG}	–55 to 150	°C
Source Current (Body Diode) (Note 2)			I _S	286	mA
Lead Temperature for Soldering Purposes (1/8" from case for 10 seconds)			T _L	260	°C

Stresses exceeding those listed in the Maximum Ratings table may damage the device. If any of these limits are exceeded, device functionality should not be assumed, damage may occur and reliability may be affected.

1. Surface-mounted on FR4 board using 1 in sq pad size (Cu area = 1.127 in sq [1 oz] including traces)
2. Surface-mounted on FR4 board using the minimum recommended pad size.

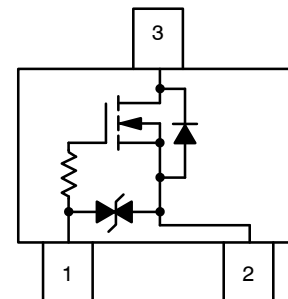


ON Semiconductor®

www.onsemi.com

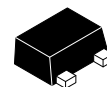
$V_{(BR)DS}$	$R_{DS(on)}$ TYP	I_D Max
20 V	1.5 Ω @ 4.5 V	285 mA
	2.4 Ω @ 2.5 V	
	5.1 Ω @ 1.8 V	
	6.8 Ω @ 1.65 V	

Top View

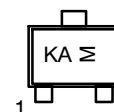


1 – Gate
2 – Source
3 – Drain

MARKING DIAGRAM



SOT-723
CASE 631AA
STYLE 5



KA = Device Code
M = Date Code

ORDERING INFORMATION

Device	Package	Shipping†
NTK3043NT1G	SOT-723*	4000 / Tape & Reel
NTK3043NT5G	SOT-723*	8000 / Tape & Reel

†For information on tape and reel specifications, including part orientation and tape sizes, please refer to our Tape and Reel Packaging Specification Brochure, BRD8011/D.

*These packages are inherently Pb-Free.

THERMAL RESISTANCE RATINGS

Parameter	Symbol	Max	Unit
Junction-to-Ambient – Steady State (Note 3)	$R_{\theta JA}$	280	°C/W
Junction-to-Ambient – $t = 5$ s (Note 3)	$R_{\theta JA}$	228	
Junction-to-Ambient – Steady State Minimum Pad (Note 4)	$R_{\theta JA}$	400	

3. Surface-mounted on FR4 board using 1 in sq pad size (Cu area = 1.127 in sq [1 oz] including traces)

4. Surface-mounted on FR4 board using the minimum recommended pad size.

ELECTRICAL CHARACTERISTICS ($T_J = 25^{\circ}\text{C}$ unless otherwise specified)

Parameter	Test Condition	Symbol	Min	Typ	Max	Unit
-----------	----------------	--------	-----	-----	-----	------

OFF CHARACTERISTICS

Drain-to-Source Breakdown Voltage	$V_{GS} = 0\text{ V}, I_D = 100\text{ }\mu\text{A}$	$V_{(BR)DSS}$	20			V
Drain-to-Source Breakdown Voltage Temperature Coefficient	$I_D = 100\text{ }\mu\text{A}$, Reference to 25°C	$V_{(BR)DSS}/T_J$		27		mV/°C
Zero Gate Voltage Drain Current	$V_{GS} = 0\text{ V}, V_{DS} = 16\text{ V}$	I_{DSS}			1	μA
					10	
Gate-to-Source Leakage Current	$V_{DS} = 0\text{ V}, V_{GS} = \pm 5\text{ V}$	I_{GSS}			1	μA

ON CHARACTERISTICS (Note 3)

Gate Threshold Voltage	$V_{GS} = V_{DS}, I_D = 250\text{ }\mu\text{A}$	$V_{GS(TH)}$	0.4		1.3	V
Gate Threshold Temperature Coefficient		$V_{GS(TH)}/T_J$		-2.4		mV/°C
Drain-to-Source On Resistance	$V_{GS} = 4.5\text{ V}, I_D = 10\text{ mA}$	$R_{DS(ON)}$		1.5	3.4	Ω
	$V_{GS} = 4.5\text{ V}, I_D = 255\text{ mA}$			1.6	3.8	
	$V_{GS} = 2.5\text{ V}, I_D = 1\text{ mA}$			2.4	4.5	
	$V_{GS} = 1.8\text{ V}, I_D = 1\text{ mA}$			5.1	10	
	$V_{GS} = 1.65\text{ V}, I_D = 1\text{ mA}$			6.8	15	
Forward Transconductance	$V_{DS} = 5\text{ V}, I_D = 100\text{ mA}$	g_{FS}		0.275		S
Gate Resistance	$T_A = 25^{\circ}\text{C}$	R_G		2.2		k Ω

CHARGES, CAPACITANCES AND GATE RESISTANCE

Input Capacitance	$V_{GS} = 0\text{ V}, f = 1\text{ MHz}, V_{DS} = 10\text{ V}$	C_{ISS}		11		pF
Output Capacitance		C_{OSS}		8.3		
Reverse Transfer Capacitance		C_{RSS}		2.7		

SWITCHING CHARACTERISTICS, $V_{GS} = 4.5\text{ V}$ (Note 4)

Turn-On Delay Time	$V_{GS} = 4.5\text{ V}, V_{DD} = 5\text{ V}, I_D = 10\text{ mA}, R_G = 6\text{ }\Omega$	$t_{d(ON)}$		13		ns
Rise Time		t_r		15		
Turn-Off Delay Time		$t_{d(OFF)}$		94		
Fall Time		t_f		55		

DRAIN-SOURCE DIODE CHARACTERISTICS

Forward Diode Voltage	$V_{GS} = 0\text{ V}, I_S = 286\text{ mA}$	$T_J = 25^{\circ}\text{C}$	V_{SD}		0.83	1.2	V
		$T_J = 125^{\circ}\text{C}$			0.69		
Reverse Recovery Time	$V_{GS} = 0\text{ V}, V_{DD} = 20\text{ V}, dI_{SD}/dt = 100\text{ A}/\mu\text{s}, I_S = 286\text{ mA}$		t_{RR}		9.1		ns
t_a				7.1			
Charge Time			t_b		2.0		
Discharge Time			Q_{RR}		3.7		
Reverse Recovery Charge							

5. Pulse Test: pulse width $\leq 300\text{ }\mu\text{s}$, duty cycle $\leq 2\%$

6. Switching characteristics are independent of operating junction temperatures

TYPICAL PERFORMANCE CURVES

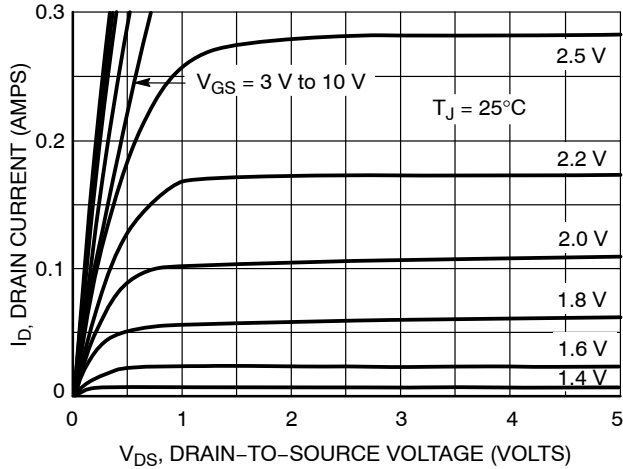


Figure 1. On-Region Characteristics

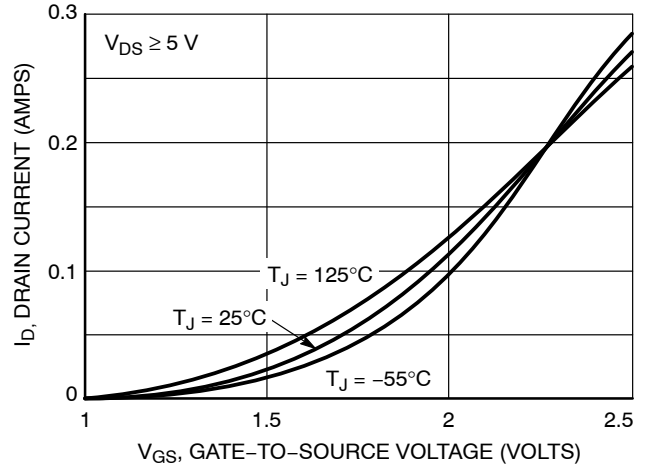


Figure 2. Transfer Characteristics

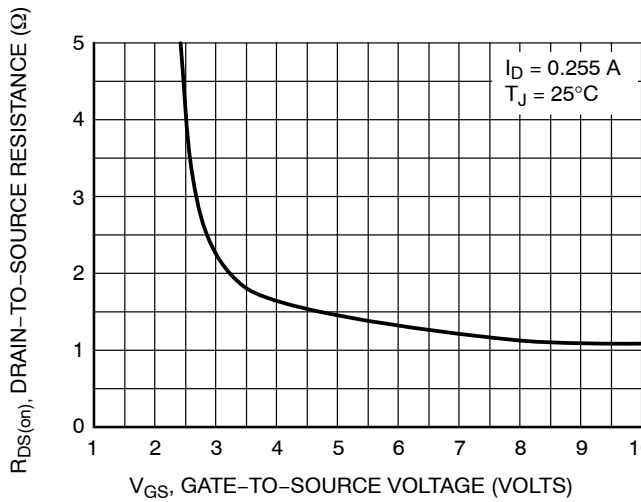


Figure 3. On-Resistance vs. Gate-to-Source Voltage

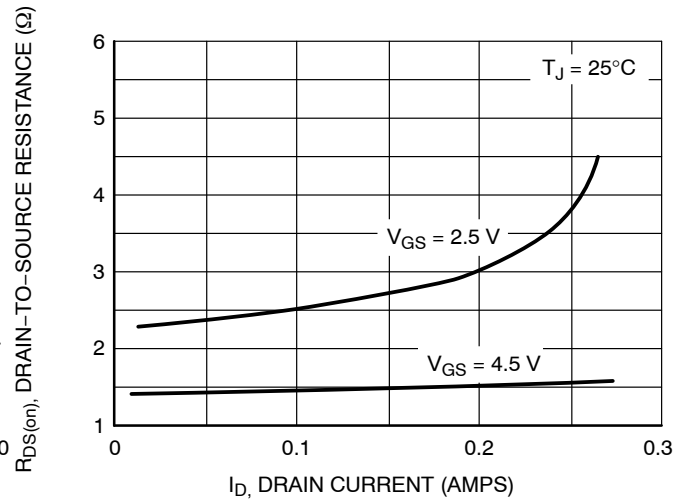


Figure 4. On-Resistance vs. Drain Current and Gate Voltage

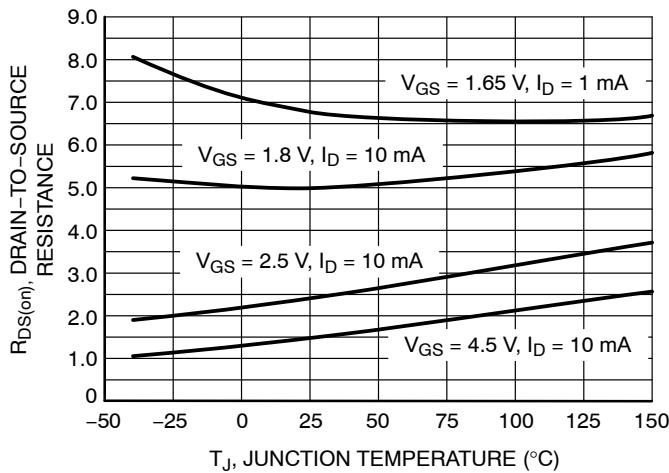


Figure 5. On-Resistance Variation with Temperature

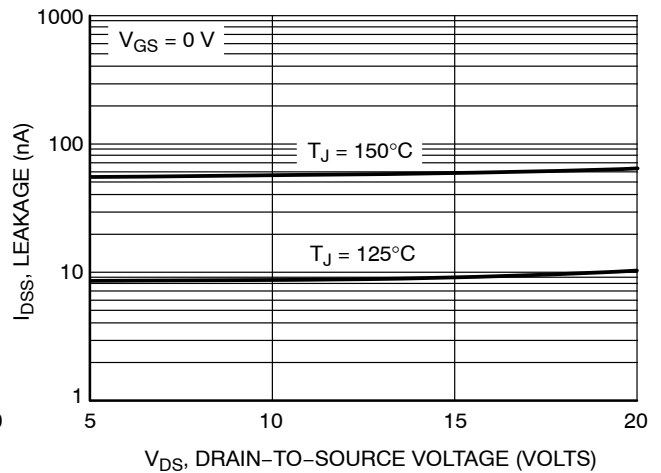


Figure 6. Drain-to-Source Leakage Current vs. Voltage

TYPICAL PERFORMANCE CURVES

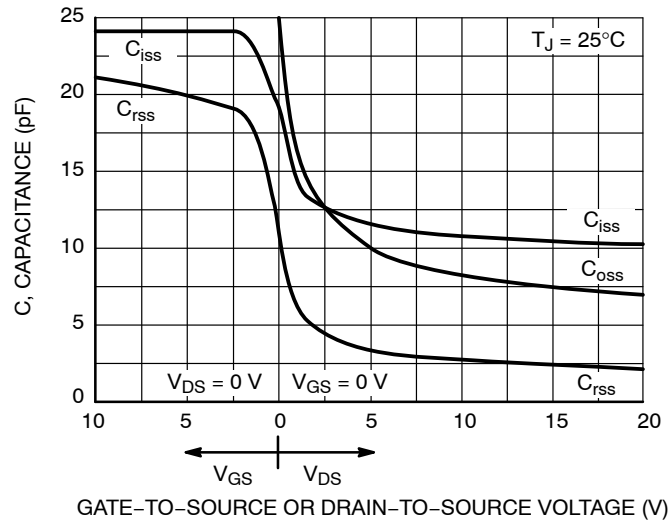


Figure 7. Capacitance Variation

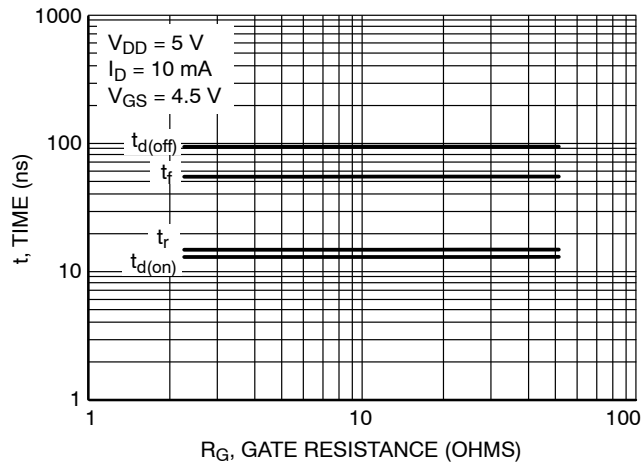


Figure 8. Resistive Switching Time Variation vs. Gate Resistance

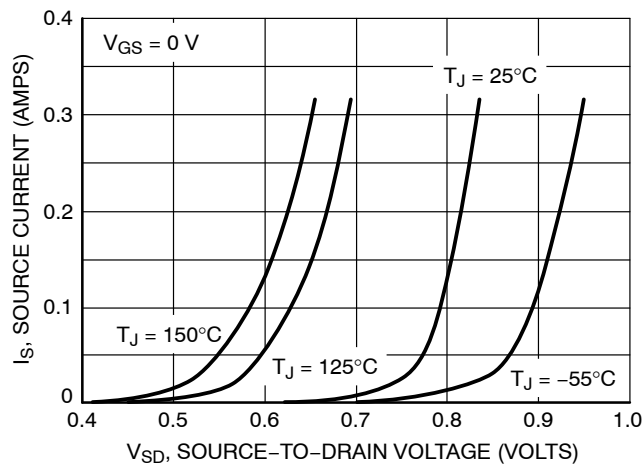


Figure 9. Diode Forward Voltage vs. Current



SOT-723 1.20x0.80x0.50, 0.40P
CASE 631AA
ISSUE E

DATE 24 JAN 2024

NOTES:

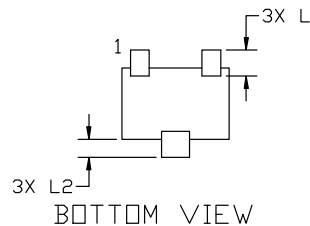
1. DIMENSIONING AND TOLERANCING PER ASME Y14.5M, 2018.
2. CONTROLLING DIMENSION: MILLIMETERS.
3. MAXIMUM LEAD THICKNESS INCLUDES LEAD FINISH. MINIMUM LEAD THICKNESS IS THE MINIMUM THICKNESS OF BASE MATERIAL.
4. DIMENSIONS D AND E DO NOT INCLUDE MOLD FLASH, PROTRUSIONS OR GATE BURRS.



TOP VIEW



SIDE VIEW



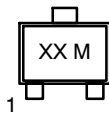
BOTTOM VIEW

DIM	MILLIMETERS		
	MIN.	NOM.	MAX.
A	0.45	0.50	0.55
b	0.15	0.21	0.27
b1	0.25	0.31	0.37
c	0.07	0.12	0.17
D	1.15	1.20	1.25
E	0.75	0.80	0.85
e	0.40 BSC		
H	1.15	1.20	1.25
L	0.29 REF		
L2	0.15	0.20	0.25



RECOMMENDED MOUNTING
FOOTPRINT

**GENERIC
MARKING DIAGRAM***



XX = Specific Device Code
M = Date Code

*This information is generic. Please refer to device data sheet for actual part marking. Pb-Free indicator, "G" or microdot "•", may or may not be present. Some products may not follow the Generic Marking.

*For additional information on our Pb-Free strategy and soldering details, please download the ON Semiconductor Soldering and Mounting Techniques Reference Manual, SOLDERM/D.

STYLE 1: PIN 1. BASE 2. EMITTER 3. COLLECTOR	STYLE 2: PIN 1. ANODE 2. N/C 3. CATHODE	STYLE 3: PIN 1. ANODE 2. ANODE 3. CATHODE	STYLE 4: PIN 1. CATHODE 2. CATHODE 3. ANODE	STYLE 5: PIN 1. GATE 2. SOURCE 3. DRAIN
---	--	--	--	--

DOCUMENT NUMBER:	98AON12989D	Electronic versions are uncontrolled except when accessed directly from the Document Repository. Printed versions are uncontrolled except when stamped "CONTROLLED COPY" in red.
DESCRIPTION:	SOT-723 1.20x0.80x0.50, 0.40P	PAGE 1 OF 1

onsemi and onsemi are trademarks of Semiconductor Components Industries, LLC dba onsemi or its subsidiaries in the United States and/or other countries. onsemi reserves the right to make changes without further notice to any products herein. onsemi makes no warranty, representation or guarantee regarding the suitability of its products for any particular purpose, nor does onsemi assume any liability arising out of the application or use of any product or circuit, and specifically disclaims any and all liability, including without limitation special, consequential or incidental damages. onsemi does not convey any license under its patent rights nor the rights of others.

onsemi, **Onsemi**, and other names, marks, and brands are registered and/or common law trademarks of Semiconductor Components Industries, LLC dba "**onsemi**" or its affiliates and/or subsidiaries in the United States and/or other countries. **onsemi** owns the rights to a number of patents, trademarks, copyrights, trade secrets, and other intellectual property. A listing of **onsemi**'s product/patent coverage may be accessed at www.onsemi.com/site/pdf/Patent-Marking.pdf. **onsemi** reserves the right to make changes at any time to any products or information herein, without notice. The information herein is provided "as-is" and **onsemi** makes no warranty, representation or guarantee regarding the accuracy of the information, product features, availability, functionality, or suitability of its products for any particular purpose, nor does **onsemi** assume any liability arising out of the application or use of any product or circuit, and specifically disclaims any and all liability, including without limitation special, consequential or incidental damages. Buyer is responsible for its products and applications using **onsemi** products, including compliance with all laws, regulations and safety requirements or standards, regardless of any support or applications information provided by **onsemi**. "Typical" parameters which may be provided in **onsemi** data sheets and/or specifications can and do vary in different applications and actual performance may vary over time. All operating parameters, including "Typicals" must be validated for each customer application by customer's technical experts. **onsemi** does not convey any license under any of its intellectual property rights nor the rights of others. **onsemi** products are not designed, intended, or authorized for use as a critical component in life support systems or any FDA Class 3 medical devices or medical devices with a same or similar classification in a foreign jurisdiction or any devices intended for implantation in the human body. Should Buyer purchase or use **onsemi** products for any such unintended or unauthorized application, Buyer shall indemnify and hold **onsemi** and its officers, employees, subsidiaries, affiliates, and distributors harmless against all claims, costs, damages, and expenses, and reasonable attorney fees arising out of, directly or indirectly, any claim of personal injury or death associated with such unintended or unauthorized use, even if such claim alleges that **onsemi** was negligent regarding the design or manufacture of the part. **onsemi** is an Equal Opportunity/Affirmative Action Employer. This literature is subject to all applicable copyright laws and is not for resale in any manner.

ADDITIONAL INFORMATION

TECHNICAL PUBLICATIONS:

Technical Library: www.onsemi.com/design/resources/technical-documentation
onsemi Website: www.onsemi.com

ONLINE SUPPORT: www.onsemi.com/support

For additional information, please contact your local Sales Representative at
www.onsemi.com/support/sales

