

conga-SMX8-Mini

SMARC 2.1 Module with NXP® i.MX 8M Mini Quad, Dual and Solo Processors

User's Guide

Revision 1.8

Revision History

Revision	Date (yyyy-mm-dd)	Author	Changes
0.1	2020-02-13	BEU	<ul style="list-style-type: none"> Preliminary release
1.0	2020-06-05	BEU	<ul style="list-style-type: none"> Changed document to read from i.MX8 M Mini Reference Manual to Datasheet in preface section Added power consumption values to table 6 and 7 Updated block diagram in section 3 "Block Diagram" Updated section 7 "Signal Descriptions and Pinout Tables" and 8 "Software Documentation"
1.1	2021-05-14	BEU	<ul style="list-style-type: none"> Added inrush current to section 5.13 "Power Control"
1.2	2021-07-06	BEU	<ul style="list-style-type: none"> Updated congatec AG to congatec GmbH throughout the document Added Software License Information to preface section
1.3	2021-08-03	BEU	<ul style="list-style-type: none"> Changed specification of the module from SMARC 2.0 to SMARC 2.1 throughout the document
1.4	2022-10-25	BEU	<ul style="list-style-type: none"> Updated number of GPIOs and RTC information in table 4 "Feature Summary" Updated GBE0 support from IEEE1588 to IEEE 1588v2 in table 4 "Feature Summary" and section 5.10 "Ethernet" Updated section 2.5 "Power Consumption" Updated section 3 "Block Diagram" Added UHS-I voltage information to section 5.3 "SD/SDIO Card Interface" Updated SPI0, SPI1 and SPI0_CS1# information in section 5.4 "SPI Interfaces" Updated Wi-Fi and Bluetooth combo module in section 5.7 "Serial Ports" and 5.8 "USB Ports" Added notes about PCIE_A_CKREQ# implementation in different revisions to section 5.9 "PCI Express™" Corrected note 4 in section 5.9 "PCI Express™" Updated onboard PHY to TI DP83867 in section 5.10 "Ethernet" Added note about onboard PHY of older revisions to section 5.10 "Ethernet" Updated number of GPIOs to fourteen in section 5.11 "GPIO" Added note about number of GPIOs of older revisions to section 5.11 "GPIO" Minor improvements in section 5.12 "Boot Select" and 5.13 "Power Control" Added RESET_OUT# information in section 5.13 "Power Control" Renamed section 6.3 "SPI NOR Flash" to "QSPI NOR Flash Memory" Renamed "SPI" to "QSPI" in table 4 "Feature Summary" and section 6.3 "QSPI NOR Flash Memory" Updated optional max. memory size in table 4 "Feature Summary" and section 6.3 "QSPI NOR Flash Memory" Added note about optional max. memory size of older revisions to section 6.3 "QSPI NOR Flash Memory" Updated optional Wi-Fi and Bluetooth modules in section 6.4 "Wi-Fi and Bluetooth" Added note about optional Wi-Fi and Bluetooth module of older revisions to section 6.4 "Wi-Fi and Bluetooth" Updated onboard RTC in section 6.5 "RTC" Added note about onboard RTC of older revisions to section 6.5 "RTC"
1.5	2024-01-02	BEU	<ul style="list-style-type: none"> Updated title page Updated RoHS Directive Added note to section 2.7 "Environmental Specifications" Added note to section 4 "Cooling Solutions"
1.6	2024-10-17	BEU	<ul style="list-style-type: none"> Added additional documents to read to Preface section Correct M4 Console assembly option to software option in section 2.1 "Feature List", 5.7 "Serial Ports", 6.6.1 "A53 Console" and 6.6.2 "M4 Console"

1.7	2025-02-18	RVI	<ul style="list-style-type: none"> • Updated the preface section • Added WEEE Compliance Declaration • Added a note to section 2.3 "Mechanical Dimensions" • Updated section 2.7 "Environmental Specifications" • Added a new section 2.8 "Storage Specifications"
1.8	2026-03-06	HSU	<ul style="list-style-type: none"> • Updated additional reference sources in the Preface section • Added Wireless Regulatory Compliance to the preface section • Added the wiki link for the application note AN09 in section 2.6 "Supply Voltage Battery Power" • Added screenshot of the wiki home page and the category page of the product in section 8 "software documentaion"

Preface

This user's guide provides information about the components, features and connectors available on the conga-SMX8-Mini. It is one of five documents that should be referred to when designing a SMARC® application.

The other reference documents that should be used include the following:

- conga-SMX8-Mini Pinout Description (https://git.congatec.com/arm-nxp/imx8-family/doc/cgtimx8_pinlist/tree/cgtsx8m_pinlist)
- SMARC® Design Guide 2.0 (<https://sget.org>)
- SMARC® Specification 2.1 (<https://sget.org>)
- i.MX 8M Mini Applications Processor Datasheet (www.nxp.com)

Ensure regular consultation of the customer login area at www.congatec.com and the congatec customer knowledge base at wiki.congatec.com for the most recent and legally binding product-related documents—such as errata sheets, known issues, and Product Change Notifications (PCNs).

Additionally, refer to the official websites of the respective silicon vendors for further information, including general chip limitations, errata sheets, sighting reports, and other technical or regulatory updates. These documents may contain mandatory and legally relevant information concerning product usage, compliance, and performance.

Software Licenses

Notice Regarding Open Source Software

The congatec products contain Open Source software that has been released by programmers under specific licensing requirements such as the “General Public License” (GPL) Version 2 or 3, the “Lesser General Public License” (LGPL), the “ApacheLicense” or similar licenses.

You can find the specific details at <https://www.congatec.com/en/licenses/>.

Enter the following command “license” in the bootloader to get the complete product related license information.

To the extent that any accompanying material such as instruction manuals, handbooks etc. contain copyright notices, conditions of use or licensing requirements that contradict any applicable Open Source license, these conditions are inapplicable. The use and distribution of any Open Source software contained in the product is exclusively governed by the respective Open Source license.

The Open Source software is provided by its programmers without ANY WARRANTY, whether implied or expressed, of any fitness for a particular purpose, and the programmers DECLINE ALL LIABILITY for damages, direct or indirect, that result from the use of this software.

congatec's liability with regards to the open source Software is as set out in congatec's Software License Information.

Intended Audience

This user's guide is intended for technically qualified personnel. It is not intended for general audiences.

Disclaimer

The information contained within this user's guide, including but not limited to any product specification, is subject to change without notice.

congatec GmbH provides no warranty with regard to this user's guide or any other information contained herein and hereby expressly disclaims any implied warranties of merchantability or fitness for any particular purpose with regard to any of the foregoing. congatec GmbH assumes no liability for any damages incurred directly or indirectly from any technical or typographical errors or omissions contained herein or for discrepancies between the product and the user's guide. In no event shall congatec GmbH be liable for any incidental, consequential, special, or exemplary damages, whether based on tort, contract or otherwise, arising out of or in connection with this user's guide or any other information contained herein or the use thereof.

RoHS Directive

All congatec GmbH designs comply with EU RoHS Directive 2011/65/EU and Delegated Directive 2015/863.

WEEE Directive



To comply with Directive 2012/19/EU on Waste Electrical and Electronic Equipment (WEEE), ensure that this product is disposed of correctly at the end of its lifecycle. Customers are required to take electrical and electronic equipment to designated collection facilities separate from unsorted municipal waste, following applicable regional laws.

Proper disposal through designated collection points allows for the recycling, recovery, and reuse of valuable materials, supporting a more efficient use of resources and reducing environmental impact.



Standalone congatec components, such as modules, carrier boards, and cooling solutions are designed to function only within other products. WEEE registration for the complete product must be completed by the entity placing the final product on the market.

Electrostatic Sensitive Device



All congatec GmbH products are electrostatic sensitive devices. They are enclosed in static shielding bags, and shipped enclosed in secondary packaging (protective packaging). The secondary packaging does not provide electrostatic protection.

Do not remove the device from the static shielding bag or handle it, except at an electrostatic-free workstation. Also, do not ship or store electronic devices near strong electrostatic, electromagnetic, magnetic, or radioactive fields unless the device is contained within its original packaging. Be aware that failure to comply with these guidelines will void the congatec GmbH Limited Warranty.

Symbols

The following symbols are used in this user's guide:



Warning

Warnings indicate conditions that, if not observed, can cause personal injury.



Caution

Cautions warn the user about how to prevent damage to hardware or loss of data.



Note

Notes call attention to important information that should be observed.

Copyright Notice

Copyright © 2020, congatec GmbH. All rights reserved. All text, pictures and graphics are protected by copyrights. No copying is permitted without written permission from congatec GmbH. congatec GmbH has made every attempt to ensure that the information in this document is accurate yet the information contained within is supplied "as-is".

Trademarks

Product names, logos, brands, and other trademarks featured or referred to within this user's guide, or the congatec website, are the property of their respective trademark holders. These trademark holders are not affiliated with congatec GmbH, our products, or our website.

Certification

congatec GmbH is certified to DIN EN ISO 9001 standard.



congatec



Wireless Regulatory Compliance

Declaration for Wireless Compliance

We hereby expressly point out that this product is not a radio/wireless equipment (end product) according to regulations such as the Radio Equipment Directive and the Federal Communications Commission (RED, FCC). This product is only a sub-assembly, which has to be integrated into the end product by the customer and is not functional without further integration. The customer is solely and exclusively responsible for complying with all applicable and local regulations relating to the end product (e.g., RED, FCC) and for having the necessary (testing) procedures and certifications carried out at their own expense.

Scope of System-Level Compliance Testing

Due to the modular nature of COMs and their broad applicability, congatec performs preliminary system-level compliance testing using representative commercial off-the-shelf (COTS) accessories, including antennas. The purpose of these tests is to demonstrate the feasibility of achieving compliance in final customer-designed products and to show that the functionality and conformity of the used Wi-Fi module is not limited by the congatec design. However, test results are limited exclusively to the specific configurations tested by congatec. The results cannot be transferred directly to alternative configurations or designs but can be shared with customers for further information.

Cybersecurity Compliance under RED

congatec has thoroughly evaluated cybersecurity requirements outlined in standards such as EN 18031-1. By design, COMs (Computer-on-Modules) do not include the hardware and software required to support standalone cybersecurity assessments. Therefore, congatec modules alone do not meet these cybersecurity requirements. Compliance with cybersecurity requirements is thus the responsibility of the final product manufacturer, who has detailed knowledge of the intended use and operating environment. congatec actively supports its customers by providing necessary technical documentation to aid in achieving cybersecurity compliance.

Cybersecurity Maintenance under IEC 62443-4-1

congatec provides security maintenance updates according to IEC 62443-4-1. This includes monitoring component supplier information about hardware and firmware security vulnerabilities of the Wi-Fi module.

congatec promptly informs customers about hardware and firmware security vulnerabilities via vulnerability disclosures and about product changes via Product Change Notifications (PCNs)—including changes implemented to mitigate security vulnerabilities. Customers are responsible for monitoring the PCNs, independently monitoring security vulnerabilities beyond hardware and firmware, assessing their implications, and implementing relevant security updates.

Certification Documentation for Wi-Fi Module

For certification and compliance documentation, refer to the AzureWave documentation or contact your local sales representative.

Warranty

congatec GmbH makes no representation, warranty or guaranty, express or implied regarding the products except its standard form of limited warranty ("Limited Warranty") per the terms and conditions of the congatec entity, which the product is delivered from. These terms and conditions can be downloaded from www.congatec.com. congatec GmbH may in its sole discretion modify its Limited Warranty at any time and from time to time.

The products may include software. Use of the software is subject to the terms and conditions set out in the respective owner's license agreements, which are available at www.congatec.com and/or upon request.

Beginning on the date of shipment to its direct customer and continuing for the published warranty period, congatec GmbH represents that the products are new and warrants that each product failing to function properly under normal use, due to a defect in materials or workmanship or due to non conformance to the agreed upon specifications, will be repaired or exchanged, at congatec's option and expense.

Customer will obtain a Return Material Authorization ("RMA") number from congatec GmbH prior to returning the non conforming product freight prepaid. congatec GmbH will pay for transporting the repaired or exchanged product to the customer.

Repaired, replaced or exchanged product will be warranted for the repair warranty period in effect as of the date the repaired, exchanged or replaced product is shipped by congatec, or the remainder of the original warranty, whichever is longer. This Limited Warranty extends to congatec's direct customer only and is not assignable or transferable.

Except as set forth in writing in the Limited Warranty, congatec makes no performance representations, warranties, or guarantees, either express or implied, oral or written, with respect to the products, including without limitation any implied warranty (a) of merchantability, (b) of fitness for a particular purpose, or (c) arising from course of performance, course of dealing, or usage of trade.

congatec GmbH shall in no event be liable to the end user for collateral or consequential damages of any kind. congatec shall not otherwise be liable for loss, damage or expense directly or indirectly arising from the use of the product or from any other cause. The sole and exclusive remedy against congatec, whether a claim sound in contract, warranty, tort or any other legal theory, shall be repair or replacement of the product only.

Technical Support

congatec GmbH technicians and engineers are committed to providing the best possible technical support for our customers so that our products can be easily used and implemented. We request that you first visit our website at www.congatec.com for the latest documentation, utilities and drivers, which have been made available to assist you. If you still require assistance after visiting our website then contact our technical support department by email at support@congatec.com.

Terminology

Term	Description
°C	Degrees Celsius
µA	Microamp
µs	Microsecond
A	Ampere
AN	Application Note
ARM	Advanced RISC Machine
CAAM	Cryptographic Acceleration and Assurance Module
CMOS	Complementary Metal Oxide Semiconductor
COM	Computer-on-Module
CPU	Central Processing Unit
CSI	Camera Serial Interface
CSP	Cooling Solution Passive
DDR	Double Data Rate
DP	DisplayPort
DP++	DisplayPort Dual-Mode
DRAM	Dynamic Random Access Memory
DSI	Display Serial Interface
D-SUB	D-Subminiature
eMMC	embedded MultiMediaCard
eSPI	enhanced Serial Peripheral Interface
GB	Gigabyte
GbE	Gigabit Ethernet
GHz	Gigahertz
GND	Ground
GPIO	General-Purpose Input/Output
GPU	Graphics Processing Unit
GTps	Gigatransfers per second
HW	Hardware
HAB	High Assurance Boot
HSP	Heat Spreader
Hz	Hertz
I/O	Input/Output
I ² C	Inter-Integrated Circuit
I ² S (I2S)	Inter-IC Sound
IEEE	Institute of Electrical and Electronics Engineers

JEIDA	Japan Electronic Industries Development Association
JTAG	Joint Test Action Group
KS	Key State
LPDDR	Low-Power Double Data Rate
LVDS	Low-Voltage Differential Signaling
Mbps	Megabits per second
MBps	Megabytes per second
MHz	Megahertz
mm	Millimeter
MMU	Memory Management Unit
mVpp	Millivolts Peak to Peak
MXM	Mobile PCI Express Module
NC	Not Connected
Nm	Newton metre
NXP	NeXt exPerience
OS	Operating System
OTG	On-The-Go
PCB	Printed Circuit Board
PCI Express	Peripheral Component Interconnect Express
PHY	Physical Layer
PMIC	Power Management Integrated Circuit
PN	Part Number
QSPI	Quad Serial Peripheral Interface
RGMII	Reduced Gigabit-Media Independent Interface
RS-232	Recommended Standard 232
RTC	Real-Time Clock
SAI	Synchronous Audio Interface
SD	Secure Digital
SDIO	Secure Digital Input Output
SDR	Single Data Rate
SDRAM	Synchronous Dynamic Random Access Memory
SDXC	Secure Digital eXtended Capacity
SGET	Standardization Group for Embedded Technologies e.V
SMARC	Smart Mobility ARChitecture

SoC	System on Chip
SPI	Serial Peripheral Interface
TBD	To Be Defined
UART	Universal Asynchronous Receiver-Transmitter
U-Boot	Universal Boot Loader
UHS	Ultra High Speed
USB	Universal Serial Bus
uSDHC	ultra Secure Digital Host Controller
V	Volt
Vdc	Volts direct current
VESA	Video Electronics Standards Association
W	Watt
Wi-Fi	Wireless Fidelity



Contents

1	Introduction	12	5.5	I2C Interfaces	26
1.1	SMARC® Concept	12	5.6	Audio Interfaces (I2S)	26
1.2	conga-SMX8-Mini	12	5.7	Serial Ports	26
1.2.1	Options Information	13	5.8	USB Ports	27
1.2.2	Accessories	13	5.9	PCI Express™	27
2	Specifications	14	5.10	Ethernet	27
2.1	Feature List	14	5.11	GPIO	28
2.2	Supported Operating Systems	15	5.12	Boot Select	28
2.3	Mechanical Dimensions	15	5.13	Power Control	29
2.4	Standard Power	16	6	Onboard Interfaces and Devices	31
2.4.1	Supply Voltage	16	6.1	DRAM	31
2.4.2	Electrical Characteristics	16	6.2	eMMC	31
2.4.3	Rise Time	16	6.3	QSPI NOR Flash Memory	31
2.5	Power Consumption	17	6.4	Wi-Fi and Bluetooth	32
2.6	Supply Voltage Battery Power	18	6.5	RTC	32
2.7	Environmental Specifications	18	6.6	Console and Debug Interfaces	33
2.8	Storage Specifications	19	6.6.1	A53 Console	33
2.8.1	Module	19	6.6.2	M4 Console	33
2.8.2	Cooling Solution	19	6.6.3	JTAG Debug	34
3	Block Diagram	20	7	Signal Descriptions and Pinout Tables	35
4	Cooling Solutions	21	8	Software Documentation	36
4.1	CSP Dimensions	22			
4.2	HSP Dimensions	23			
5	Connector Rows	24			
5.1	Display Interfaces	24			
5.1.1	LVDS	24			
5.1.2	DSI	24			
5.1.3	DisplayPort™ (DP)	24			
5.2	Camera Interface (MIPI® CSI)	25			
5.3	SD/SDIO Card Interface	25			
5.4	SPI Interfaces	25			

List of Tables

Table 1	Commercial Variants	13
Table 2	Industrial Variants.....	13
Table 3	conga-SMX8-Mini Adapters.....	13
Table 4	Feature Summary	14
Table 5	Measurement Description.....	17
Table 6	Power Consumption Values	17
Table 7	CMOS Battery Power Consumption	18
Table 8	Cooling Solution Variants.....	21
Table 9	A53 and M4 Console Connector (X2) Pinout Description	33
Table 10	JTAG Debug Connector (X3) Pinout Description	34

1 Introduction

1.1 SMARC® Concept

The Standardization Group for Embedded Technologies e.V (SGET) defined the SMARC standard for small form factor computer modules that target applications with low power, low cost and high performance. The SMARC connector and interfaces are optimized for high-speed communication, and are suitable for ARM SoCs and low power x86 SoCs.

The SMARC standard bridges the gap between the COM Express standard and the Qseven standard by offering most of the interfaces defined in the COM Express specification at a lower power. With a footprint of 82 mm x 50 mm or 82 mm x 80 mm, the SMARC standard promotes the design of highly integrated, energy efficient systems.

Due to its small size and lower power demands, PC appliance designers can design low cost devices as well as explore a huge variety of product development options—from compact space-saving designs to fully functional systems. This solution allows scalability, product diversification and faster time to market.

1.2 conga-SMX8-Mini

The conga-SMX8-Mini is based on the SMARC 2.1 Specification and features an NXP® i.MX 8M Mini Quad, Dual or Solo applications processor. The conga-SMX8-Mini is a low power module with high computing performance and outstanding graphics. Additionally, the conga-SMX8-Mini supports 32 bit LPDDR4-3000 SDRAM with up to 4 GB capacity, multiple I/O interfaces, and one display.

By offering most of the functional requirement for any SMARC application, the conga-SMX8-Mini provides manufacturers and developers with a platform to jump-start the development of systems and applications based on SMARC specification. Its features and capabilities make it an ideal platform for designing compact, energy-efficient, performance-oriented embedded systems.

1.2.1 Options Information

The conga-SMX8-Mini is available in nine variants (five commercial and four industrial). The tables below show the different configurations available.

Table 1 Commercial Variants

Part-No	051200	051201	051202	051203	051204
Processor	i.MX 8M Mini Quad	i.MX 8M Mini Dual	i.MX 8M Mini Solo	i.MX 8M Mini Quad	i.MX 8M Mini Quad
Cortex®-A53	4x 1.8 GHz	2x 1.8 GHz	1x 1.8 GHz	4x 1.8 GHz	4x 1.8 GHz
SDRAM	4 GB LPDDR4-3000	2 GB LPDDR4-3000	1 GB LPDDR4-3000	2 GB LPDDR4-3000	4 GB LPDDR4-3000
Display Interface	Dual channel LVDS	Dual channel LVDS	Dual channel LVDS	Dual channel LVDS	DisplayPort

Table 2 Industrial Variants

Part-No	051220	051221	051222	051223
NXP Processor	i.MX 8M Mini Quad	i.MX 8M Mini Dual	i.MX 8M Mini Solo	i.MX 8M Mini Quad
Cortex®-A53	4x 1.6 GHz	2x 1.6 GHz	1x 1.6 GHz	4x 1.6 GHz
SDRAM	4 GB LPDDR4-3000	2 GB LPDDR4-3000	1 GB LPDDR4-3000	2 GB LPDDR4-3000
Display Interface	Dual channel LVDS	Dual channel LVDS	Dual channel LVDS	Dual channel LVDS

1.2.2 Accessories

Table 3 conga-SMX8-Mini Adapters

Part-No	48000023
Product	RS-232 adapter cable for conga-ARM modules
Description	Adapter cable for ARM console. MOLEX PicoBlade 6 circuit to two D-SUB 9 connectors.

2 Specifications

2.1 Feature List

Table 4 Feature Summary

Form Factor	SMARC® form factor specification, revision 2.1 (82 mm x 50 mm)	
SoC	NXP® i.MX 8M Mini Quad, Dual or Solo	
Memory	1, 2 or 4 GB onboard 32 bit LPDDR4-3000 SDRAM	
Storage	QSPI NOR flash memory with up to 256 Mbit (64 Mbit assembled by default) eMMC™ 5.1 HS400 with up to 128 GB (16 GB assembled by default)	
Audio	2x I²S	
Ethernet	1x Gigabit Ethernet with support for IEEE 1588v2	
Display Interfaces	Support for one display with max. resolution of 1920x1080 @ 60 Hz: 1x Dual Channel LVDS (default) ¹ or 1x DSI (assembly option) or 1x DP (assembly option) ¹	NOTE: ¹ PN 051204 supports DP by default instead of LVDS (Table 1).
Peripheral Interfaces	1x MIPI CSI with two lanes (default) or four lanes (assembly option) 1x SD/SDIO Card Interface 1x SPI (SPI0) 1x SPI (SPI1) instead of onboard QSPI NOR flash (assembly option) 2x I²C 3x Serial Ports 5x USB 2.0 (USB0 supports OTG) 1x PCI Express x1 Gen2	14x GPIOs (additional GPIOs are possible via unused signals) 1x Onboard JTAG Debug Connector (assembly option) 1x Onboard A53 Console Connector ¹ 1x Onboard M4 Console Connector ¹ instead of serial port SER1 (software option) 1x Onboard Wi-Fi and Bluetooth M.2 1216 Module (assembly option) NOTE: ¹ Requires RS-232 adapter cable 48000023 (Table 3). A53 and M4 Console are provided on the same onboard connector but only A53 Console is supported by default.
Features	Watchdog timer	Discrete micropower Real-Time Clock (RTC)
Bootloader	U-Boot	
Virtualization	Multiple domains with hardware virtualization Multiple Operating Systems	System MMU Resource partitioning and split GPU
Security	High Assurance Boot (HAB) TrustZone®	Cryptographic Acceleration and Assurance Module (CAAM)

2.2 Supported Operating Systems

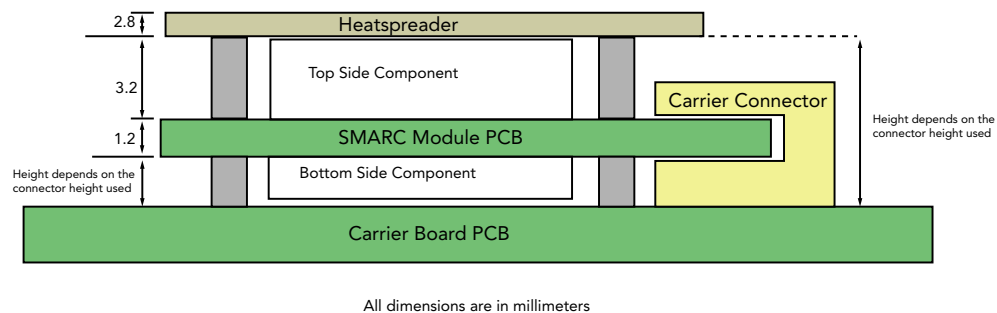
The conga-SMX8-Mini supports the following operating systems:

- Linux® (Yocto Project®)
- Android™

2.3 Mechanical Dimensions

- 82.0 mm x 50.0 mm

The height of the module, heatspreader and stack is shown below:

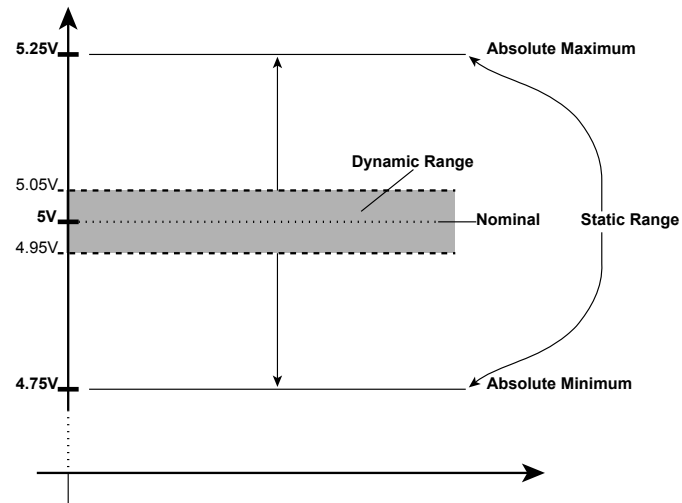


Note
3D models of congatec products are available at www.congatec.com/login. These models indicate the overall length, height and width of each product. If you need login access, contact your local sales representative.

2.4 Standard Power

2.4.1 Supply Voltage

- 4.75 V – 5.25 V



2.4.2 Electrical Characteristics

Characteristics			Min.	Typ.	Max.	Units	Comment
5V	Voltage	± 5%	4.75	5.00	5.25	V _{dc}	
	Ripple		-	-	± 50	mV _{PP}	0-20 MHz
	Current						

2.4.3 Rise Time

The input voltages shall rise from 10 percent of nominal to 90 percent of nominal at a minimum slope of 250 V/s. The smooth turn-on requires that, during the 10 percent to 90 percent portion of the rise time, the slope of the turn-on waveform must be positive.

2.5 Power Consumption

The power consumption values were measured with the following setup:

- Input voltage +5 V
- conga-SMX8-Mini
- conga-SEVA carrier board
- conga-SMX8-Mini cooling solution

The power consumption values were recorded during the modes described in the table below:

Table 5 Measurement Description

Mode	Description	Comment
Suspend	Lowest power state with external supplies on	For more information about these use-cases, refer to the AN12410 "i.MX 8M Mini Power Consumption Measurement" available on the NXP website www.nxp.com .
Idle	IDLE_DEFAULT without display	
100%	100% CPU and GPU workload	The CPU and GPU were stressed to their maximum frequency with stress-ng and Glmark2.
Peak	100% CPU and GPU workload at ~100°C peak power consumption	Consider this value when designing the system's power supply to ensure that sufficient power is supplied during worst case scenarios.

The table below provides the power consumption values of each conga-SMX8-Mini variant for different operating modes:

Table 6 Power Consumption Values

PN	Memory Size	HW Revision	U-Boot	OS	SoC	Current (A) @ 5 V			
						Suspend	Idle	100%	Peak
051200	4 GB	A.1	2018.03	Yocto (Sumo)	i.MX 8M Mini Quad	0.07	0.30	0.65	0.78
051201	2 GB	A.1	2018.03	Yocto (Sumo)	i.MX 8M Mini Dual	0.07	0.30	0.54	0.60
051202	1 GB	A.1	2018.03	Yocto (Sumo)	i.MX 8M Mini Solo	0.07	0.29	0.49	0.54
051203	2 GB	A.1	2018.03	Yocto (Sumo)	i.MX 8M Mini Quad	0.07	0.29	0.63	0.72
051204	4 GB	A.1	2018.03	Yocto (Sumo)	i.MX 8M Mini Quad	0.08	0.37	0.73	0.77
051220	4 GB	A.1	2018.03	Yocto (Sumo)	i.MX 8M Mini Quad	0.07	0.31	0.61	0.71
051221	2 GB	A.1	2018.03	Yocto (Sumo)	i.MX 8M Mini Dual	0.07	0.29	0.51	0.58
051222	1 GB	A.1	2018.03	Yocto (Sumo)	i.MX 8M Mini Solo	0.07	0.29	0.47	0.52
051223	2 GB	A.1	2018.03	Yocto (Sumo)	i.MX 8M Mini Quad	0.07	0.30	0.61	0.72

2.6 Supply Voltage Battery Power

Table 7 CMOS Battery Power Consumption

RTC @	Voltage	Current
-10°C	3V DC	1.20 μ A
20°C	3V DC	1.27 μ A
70°C	3V DC	2.44 μ A



Note

1. Do not use the CMOS battery power consumption values listed above to calculate CMOS battery lifetime.
2. Measure the CMOS battery power consumption in your customer specific application in worst case conditions (for example, during high temperature and high battery voltage).
3. Consider the self-discharge of the battery when calculating the lifetime of the CMOS battery. For more information, refer to [https://wiki.congatec.com/wiki/RTC_Battery_Lifetime_\(AN09\)](https://wiki.congatec.com/wiki/RTC_Battery_Lifetime_(AN09)).
4. We recommend to always have a CMOS battery present when operating the conga-SMX8-Mini.

2.7 Environmental Specifications

Temperature (commercial variants)	Operation: 0° to 60°C	Storage: -40° to +85°C
Temperature (industrial variants)	Operation: -40° to 85°C	Storage: -40° to +85°C
Relative Humidity	Operation: 10% to 90%	Storage: 5% to 95%



Caution

1. The above operating temperatures must be strictly adhered to at all times. When using a congatec heat spreader, the maximum operating temperature refers to any measurable spot on the heat spreader's surface.
2. Humidity specifications are for non-condensing conditions.

2.8 Storage Specifications

This section describes the storage conditions that must be observed for optimal performance of congatec products.

2.8.1 Module

For long-term storage of the conga-SMX8-Mini (more than six months), keep the conga-SMX8-Mini in a climate-controlled building at a constant temperature between 5°C and 40°C, with humidity of less than 65% and at an altitude of less than 3000 m. Also ensure the storage location is dry and well ventilated.

We do not recommend storing the conga-SMX8-Mini for more than five years under these conditions.

2.8.2 Cooling Solution

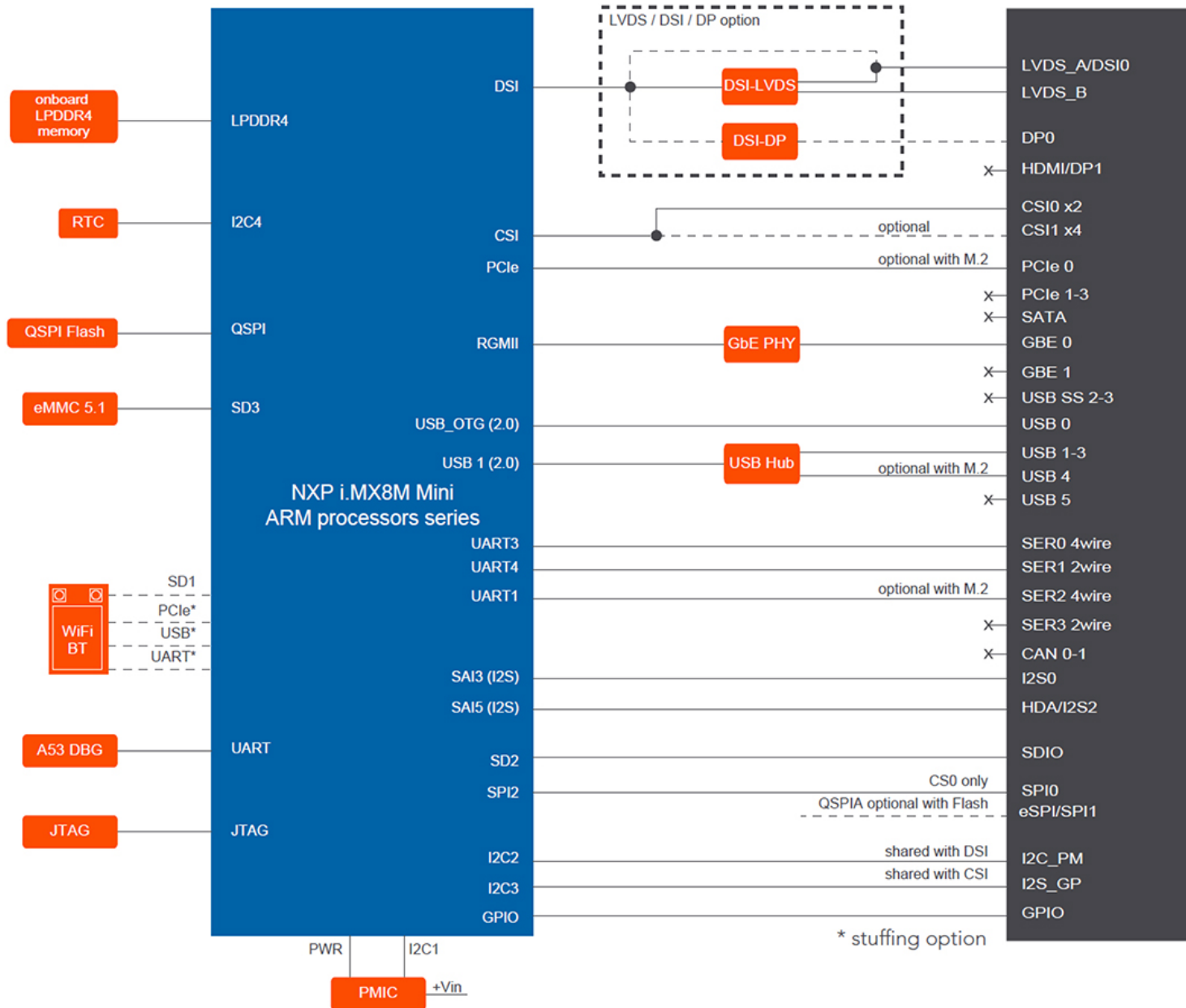
The heatpipes of congatec heatspreaders/cooling solutions are filled with water by default. For optimal cooling performance, do not store the heatspreaders/cooling solutions at temperatures below -20°C.



Caution

1. For temperatures between -10°C and -20°C, preheat the heatpipes before operation. Optionally, the heatpipes can be filled with acetone instead. For more information, contact your local sales representative.
2. For optimal thermal dissipation, do not store the congatec cooling solutions for more than six months.

3 Block Diagram



4 Cooling Solutions

congatec GmbH offers the following cooling solutions for the conga-SMX8-Mini variants. The dimensions of the cooling solutions are shown in the sub-sections. All measurements are in millimeters.

Table 8 Cooling Solution Variants

	Cooling Solution	Part No	Description
1	CSP	051250	Passive cooling with 2.7 mm borehole standoffs.
2	HSP	051251	Heatspreader with 2.7 mm borehole standoffs.



Note

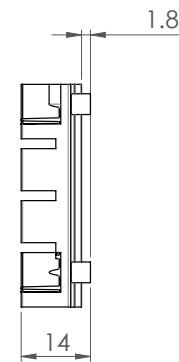
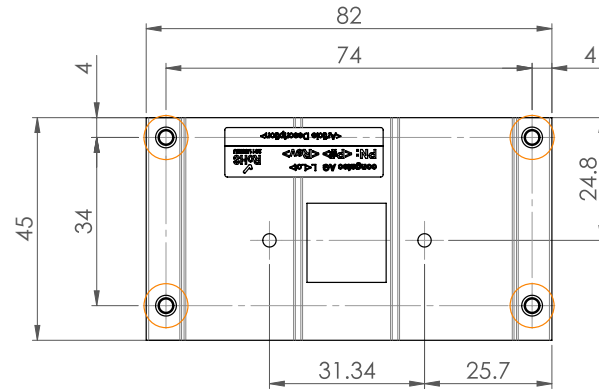
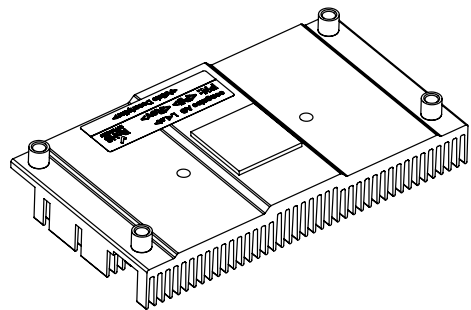
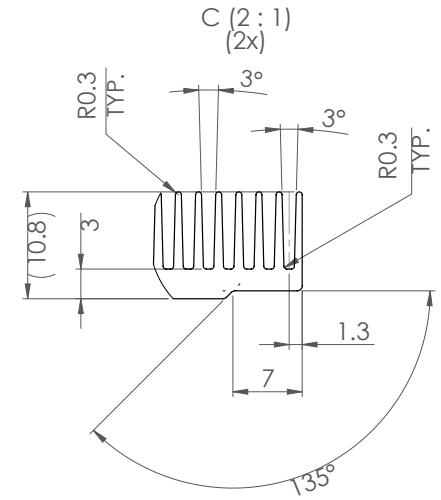
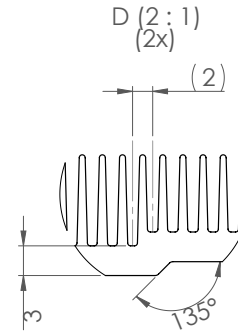
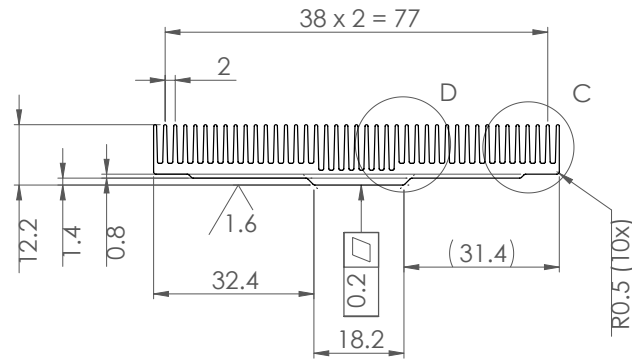
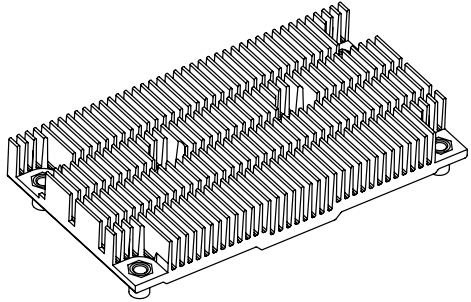
1. We recommend a maximum torque of 0.4 Nm for carrier board and module mounting screws.
2. The gap pad material used on congatec heatspreaders may contain silicon oil that can seep out over time depending on the environmental conditions it is subjected to. For more information about this subject, contact your local congatec sales representative and request the gap pad material manufacturer's specification.
3. For optimal thermal dissipation, do not store the congatec cooling solutions for more than six months.




Caution

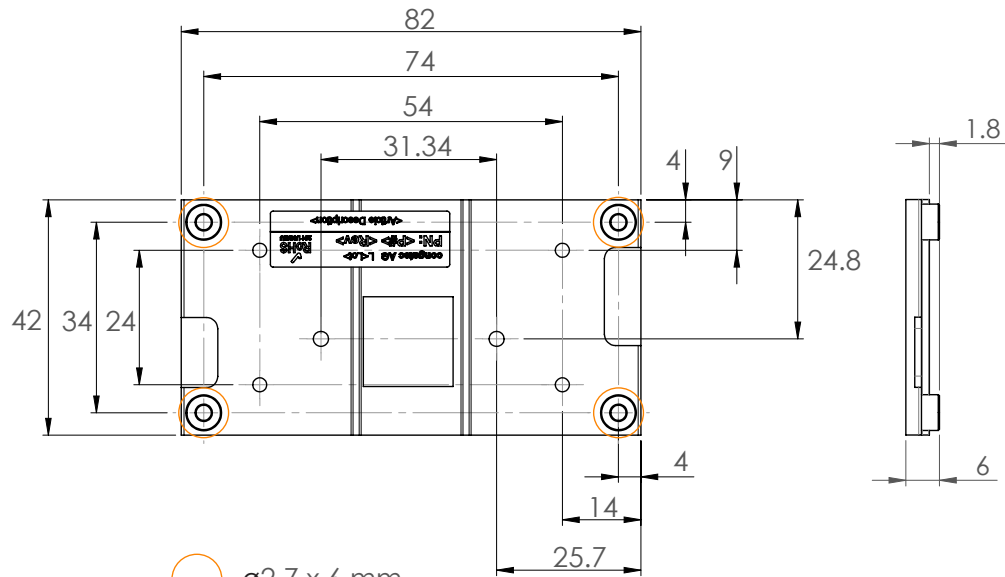
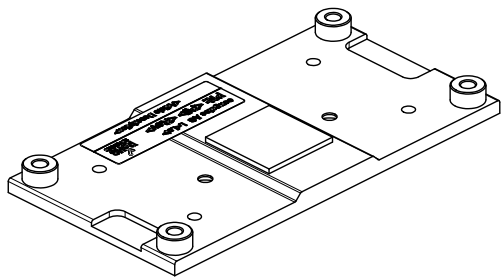
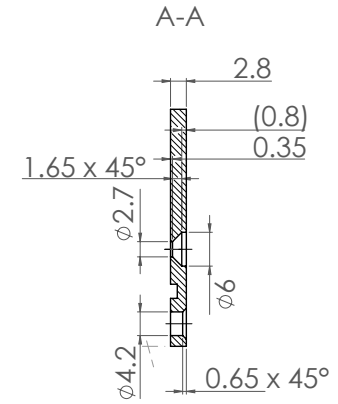
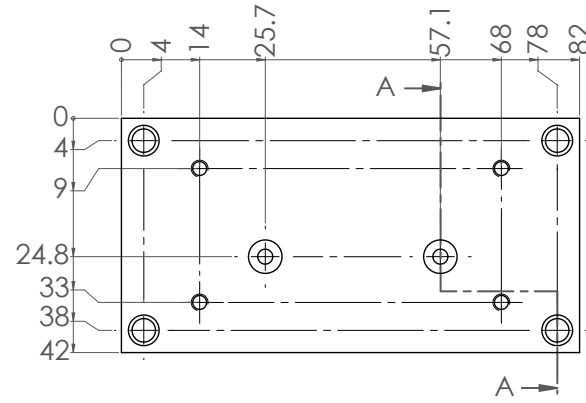
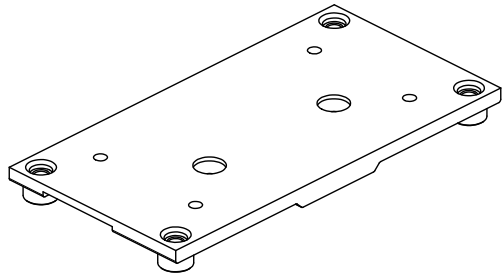
1. The congatec heatspreaders/cooling solutions are tested only within the commercial temperature range of 0° to 60°C. Therefore, if your application that features a congatec heatspreader/cooling solution operates outside this temperature range, ensure the correct operating temperature of the module is maintained at all times. This may require additional cooling components for your final application's thermal solution.
2. For adequate heat dissipation, use the mounting holes on the cooling solution to attach it to the module. Apply thread-locking fluid on the screws if the cooling solution is used in a high shock and/or vibration environment. To prevent the standoff from stripping or cross-threading, use non-threaded carrier board standoffs to mount threaded cooling solutions.
3. For applications that require vertically-mounted cooling solution, use only coolers that secure the thermal stacks with fixing post. Without the fixing post feature, the thermal stacks may move.
4. Do not exceed the recommended maximum torque. Doing so may damage the module or the carrier board, or both.


4.1 CSP Dimensions




 ø2.7 x 6 mm
 non-threaded standoff
 for borehole version

4.2 HSP Dimensions



 $\varnothing 2.7 \times 6$ mm
 non-threaded standoff
 for borehole version

5 Connector Rows

The conga-SMX8-Mini has 314 edge fingers that mate with the MXM3 connector located on the carrier board. This connector is able to interface the signals of the conga-SMX8-Mini with the carrier board peripherals.

5.1 Display Interfaces

The conga-SMX8-Mini supports one display via LVDS, DSI or DP with a maximum resolution of 1920x1080 @ 60 Hz.

5.1.1 LVDS

The conga-SMX8-Mini offers a dual channel LVDS interface (LVDS[0:1])¹ via a TI SN65DSI84 DSI to LVDS bridge with support for 18 and 24 bit JEIDA or VESA mapping by default².



Note

- ¹ Two independent single channel LVDS display panels are not supported.
- ² PN 051204 offers a DP (DP0) instead of LVDS (Table 1).

5.1.2 DSI

Optionally, the conga-SMX8-Mini can offer a DSI (DSI0) instead of LVDS (assembly option).

5.1.3 DisplayPort™ (DP)

Optionally, the conga-SMX8-Mini can offer a DisplayPort (DP0)¹ via a TI SN65DSI86 DSI to eDP bridge instead of LVDS (assembly option)².



Note

- ¹ Dual-mode DisplayPort (DP++) is not supported (DP0_AUX_SEL is not connected).
- ² PN 051204 offers a DP instead of LVDS (Table 1).

5.2 Camera Interface (MIPI® CSI)

The conga-SMX8-Mini offers a MIPI CSI-2 interface with two lanes (CSI0) by default. Optionally, the conga-SMX8-Mini can offer a MIPI CSI-2 interface with four lanes (CSI1) instead (assembly option). Either interface supports a maximum bitrate of 1.5 Gbps per lane.

5.3 SD/SDIO Card Interface

The conga-SMX8-Mini offers an SD/SDIO card interface. The interface is connected to the second Ultra Secure Digital Host Controller (uSDHC2) of the SoC. The interface is compatible with the SD/SDIO specification 3.0 and supports the following features:

- 200 MHz SDR signaling for up to 100 MBps
- Secure Digital eXtended Capacity (SDXC™) cards
- 1.8V Signaling UHS-I @SDR 104/50/25/12 and DDR50
- 3.3 V Signaling @Default Mode and High Speed Mode

5.4 SPI Interfaces

The conga-SMX8-Mini can offer up to two SPI:

- SPI0¹ is connected to the second Enhanced Configurable SPI (eCSPI2) of the SoC
- SPI1² can be connected to the first Quad SPI (QSPI_A) of the SoC instead of the onboard QSPI NOR flash memory (assembly option)



Note

- ¹ SPI0_CS1# is supported on conga-SMX8-Mini as of hardware revisions B.0. On prior hardware revisions, SPI0_CS1# is not connected.
- ² eSPI is not supported (ESPI_RESET# and ESPI_ALERT[0:1]# are not connected).

5.5 I2C Interfaces

The conga-SMX8-Mini offers two I²C interfaces with support for data rates up to 320 kbps:

- I2C_PM¹ is connected to I2C2 of the SoC
- I2C_GP² is connected to I2C3 of the SoC



Note

- ¹. I2C_PM is shared with the LVDS/DSI_I2C. All devices on this bus must have a unique address.
- ². I2C_GP is shared with CSI_I2C. All devices on this bus must have a unique address.

5.6 Audio Interfaces (I2S)

The conga-SMX8-Mini offers two I²S interfaces:

- I2S0 connected to the third Synchronous Audio Interface (SAI3) of the SoC
- I2S2 connected to the fifth Synchronous Audio Interface (SAI5) of the SoC

5.7 Serial Ports

The conga-SMX8-Mini offers three asynchronous serial ports by default with support for programmable baud rates of up to 4 Mbps:

- SER0 is a four wire port (two data lines and two handshake lines) connected to UART3 of the SoC
- SER1 is a two wire port (data only) connected to UART4 of the SoC
- SER2 is a four wire port (two data lines and two handshake lines) connected to UART1 of the SoC

Optionally, the conga-SMX8-Mini can offer an onboard M4 console interface instead of SER1 (software option). For more information, see section 6.6.2 "M4 Console".

Optionally, the conga-SMX8-Mini can offer an onboard Wi-Fi and Bluetooth combo module instead of SER2 (assembly option). For more information, see section 6.4 "Wi-Fi and Bluetooth".

5.8 USB Ports

The conga-SMX8-Mini offers five USB 2.0 ports by default:

- USB0¹ supports OTG and is connected to USB1 of the SoC
- USB1, USB2, USB3 and USB4 are provided via an onboard hub connected to USB2 of the SoC

Optionally, the conga-SMX8-Mini can offer an onboard Wi-Fi and Bluetooth combo module instead of USB4 (assembly option). For more information, see section 6.4 “Wi-Fi and Bluetooth”.



Note

¹ USB0 is used for the Serial Downloader mode. For more information, see FORCE_RECOV# description in section 5.12 “Boot Select”.

5.9 PCI Express™

The conga-SMX8-Mini offers one PCI Express x1 Gen 2 interface (PCIE_A) with up to 5 GTps.



Note

1. PCIE_B_RST# and PCIE_C_RST# are connected to ground on the module.
2. PCIE_A_CKREQ# is connected to a pull down resistor to comply with SMARC Specification 2.1.
3. PCIE_A_CKREQ# is not connected on conga-SMX8-Mini revisions prior to B.0.
4. PCI Express link L1 sub-states are not supported (PCIE_A_REFCK± is always running).

5.10 Ethernet

The conga-SMX8-Mini offers one Gigabit Ethernet interface (GBE0) via a TI DP83867 PHY with support for IEEE 1588v2.

The PHY is connected to the GbE controller of the SoC. The GBE0_TRIGGER pin is connected to the 1588_OUT signal of the SoC by default. Optionally, the GBE0_TRIGGER pin can be connected to the 1588_IN signal of the SoC instead (assembly option).



Note

conga-SMX8-Mini revisions prior to B.0 offer GBE0 via an Atheros AR8031 PHY with support for IEEE 1588v2.

5.11 GPIO

The conga-SMX8-Mini offers fourteen GPIOs (GPIO[0:13]) as defined in the SMARC 2.1 specification. Additionally, the following pins can also be used as GPIOs:

- BOOT_SEL[0:2]#
- BATLOW#
- TEST#
- CHARGING#
- CHARGER_PRSENT#



Note

1. *conga-SMX8-Mini revisions prior to B.0 offer twelve GPIOs (GPIO[0:11]).*
2. *The signals are inputs and have pull-down resistors enabled in the SoC until the U-Boot/OS is initialized.*

5.12 Boot Select

BOOT_SEL[0:2]#

The conga-SMX8-Mini does not support boot source selection via input straps (BOOT_SEL[0:2]#) because it uses the Boot From Fuses mode. The eFUSES are preset by congatec to load the bootloader (U-Boot) from the onboard QSPI NOR flash memory (see section 6.3 “QSPI NOR Flash Memory”). The OS boot device is defined via the U-Boot environment variables. For more information, refer to the conga-SMX8-Mini online software documentation at <https://wiki.congatec.com>.

FORCE_RECOV#

Low on the FORCE_RECOV# pin enables the Serial Downloader mode. The program image can be downloaded over the USB0 port (see section 5.8 “USB Ports”).

5.13 Power Control

The module only operates with 5 V input voltage. The power-up sequence is described below:

1. The carrier board provides the 5 V input voltage (VDD_IN) to the module.
2. If VIN_PWR_BAD# is not driven low, the module enables its power circuits.
3. Depending on the carrier board design and configuration, the module either a) starts the power-up sequence after the first VIN power on or b) waits for a power button event (PWRBTN#) before it starts the power-up sequence.
4. The module enables the carrier board power by asserting CARRIER_PWR_ON and CARRIER_STBY#.
5. If RESET_IN# is not driven low, the module releases RESET_OUT# and starts the boot process.

The power control signals are described below:

VIN_PWR_BAD#

VIN_PWR_BAD# (pin S150) is an active-low input signal. It indicates that the input voltage to the module is either not ready or out of specified range. Carrier board hardware should drive this signal low until the input power is up and stable. Releasing VIN_PWR_BAD# too early can cause numerous boot up problems. The module has a 10k pull up resistor to VDD_IN.

CARRIER_PWR_ON

CARRIER_PWR_ON (pin S154) is an active-high output signal. The module asserts this signal to enable power supplies for devices connected to the carrier board.

CARRIER_STBY#

The CARRIER_STBY# signal (pin S153) is an active-low output that can be used to indicate that the module is going into suspend state, where the A53 core power is turned off.

RESET_IN#

The RESET_IN# signal (pin P127) is an active-low input signal from the carrier board. The signal may be used to force the module to reset or reboot. The booting process can be postponed by driving RESET_IN# low during power on sequence.

RESET_OUT#

The RESET_OUT# signal (pin P126) is an active-low output signal from the module. The module asserts this signal during the power-up sequencing to allow the carrier board power circuits to come up. The module deasserts this signal to begin the boot-up process. RESET_OUT# can also be controlled by software via SoC GPO.

POWER_BTN#

The POWER_BTN# (pin P128) is an active-low power button input from the carrier board. This power button signal is used to wake up or shut down the system from the SNVS mode.

Power Supply Implementation Guidelines

The operational power source for the conga-SMX8-Mini is 5 V. The remaining necessary voltages are internally generated on the module with onboard voltage regulators.

A carrier board designer should be aware of the important information below when designing a power supply for a conga-SMX8-Mini application:

- We have noticed that on some occasions, problems occur when using a 5 V power supply that produces non monotonic voltage when powered up. The problem is that some internal circuits on the module (e.g. clock-generator chips) generate their own reset signals when the supply voltage exceeds a certain voltage threshold. A voltage dip after passing this threshold may lead to these circuits becoming confused, thereby resulting in a malfunction. This problem though rare, has been observed in some mobile power supply applications. The best way to ensure that this problem is not encountered is to observe the power supply rise waveform through an oscilloscope. This will help to determine if the rise is indeed monotonic and does not have any dips. You should do this during the power supply qualification phase to ensure that the problem does not occur in the application. For more information, see the “Power Supply Design Guide for Desktop Platform Form Factors” document at www.intel.com.

Inrush and Maximum Current Peaks on VDD_IN

The maximum peak-current on the conga-SMX8-Mini VDD_IN (5 V) power rail can be as high as 3.44 A for a maximum of 114.05 μ s. You should therefore ensure the power supply and decoupling capacitors provide enough power to drive the module.



For more information about power control event signals, refer to the SMARC® specification.

6 Onboard Interfaces and Devices

6.1 DRAM

The conga-SMX8-Mini offers onboard 32 bit LPDDR4-3000 SDRAM. The memory size of each conga-SMX8-Mini variant is listed in section 1.2.1 "Options Information".

6.2 eMMC

The conga-SMX8-Mini offers an onboard eMMC 5.1 HS400 storage device with up to 128 GB (16 GB assembled by default). Changes to the onboard eMMC may occur during the lifespan of the module in order to keep up with the rapidly changing eMMC technology. The performance of the newer eMMC may vary depending on the eMMC technology.



Note

For adequate operation of the eMMC, ensure that at least 15 % of the eMMC storage is reserved for vendor-specific functions.

6.3 QSPI NOR Flash Memory

The conga-SMX8-Mini offers an onboard Quad SPI (QSPI) NOR flash memory chip with up to 256 Mbit (64 Mbit assembled by default). The QSPI NOR flash memory chip is connected to the first QSPI (QSPI_A) of the SoC. Optionally, the QSPI_A signals can be connected to SPI1 instead to provide an additional SPI. For more information, see section 5.4 "SPI Interfaces".



Note

conga-SMX8-Mini revisions prior to B.0 offer an onboard QSPI NOR flash memory chip with up to 128 Mbit (64 Mbit assembled by default).

6.4 Wi-Fi and Bluetooth

Optionally, the conga-SMX8-Mini can offer Wi-Fi and Bluetooth connectivity via one of the two modules (assembly option)¹:

- AzureWave AW-CM276NF 802.11 a/b/g/n/ac 2x2+BT5.0
- AzureWave AW-NM191NF 802.11 b/g/n 1x1

The module can be connected via different interfaces²:

- SDIO (recommended; connected to SD1 of the SoC)
- PCI Express (instead of PCIE_A on the SMARC connector; connected to PCIE of the SoC)
- USB (instead of USB4 on the SMARC connector; connected to USB2 of the SoC via a USB hub)
- Serial Port (instead of SER2 on the SMARC connector; connected to UART1 of the SoC)



Note

- ¹ *conga-SMX8-Mini revisions prior to B.0 offer an onboard H&D Wireless SPB228 M.2 1216 module as an assembly option.*
- ² *The interface becomes unavailable for other devices. Therefore, congatec recommends the dedicated SDIO interface.*

6.5 RTC

The conga-SMX8-Mini offers the discrete onboard real time clock (RTC) Micro Crystal RV-4162-C7 connected to I2C4 of the SoC.



Note

conga-SMX8-Mini revisions prior to B.0 offer onboard ST M41T62 RTC. The Micro Crystal RV-4162-C7 RTC is software compatible.

6.6 Console and Debug Interfaces

6.6.1 A53 Console

The conga-SMX8-Mini offers a Cortex®-A53 console interface on connector X2. The connector pinout is described in the table below:

Table 9 A53 and M4 Console Connector (X2) Pinout Description

Pin	SoC Signal	Description
1	UART4_TXD	M4 Console (software option): Transmit signal via ISL3243E RS-232 Transmitter/Receiver connected to UART4_TXD of the SoC
2	+VIN	SMARC VDD_IN (+5V)
3	GND	Ground
4	UART2_TXD	A53 Console: Transmit signal via ISL3243E RS-232 Transmitter/Receiver connected to UART2_TXD of the SoC
5	UART2_RXD	A53 Console: Receive signal via ISL3243E RS-232 Transmitter/Receiver connected to UART2_RXD of the SoC
6	UART4_RXD	M4 Console (software option): Receive signal via ISL3243E RS-232 Transmitter/Receiver connected to UART4_RXD of the SoC



Connector Type

X2: Molex PicoBlade 0532610671 (6 Circuits, 1.25mm Pitch, Right-Angle, Friction Lock)

Mates with Molex PicoBlade Cable Assembly Series 15134 with 6 Circuits

For a matching cable with two D-SUB 9 connectors, see Table 3

6.6.2 M4 Console

Optionally, the conga-SMX8-Mini can offer a Cortex®-M4 console interface on connector X2 instead of the serial port SER1 (software option). The connector pinout is described in Table 9 above. To enable the Cortex®-M4 console interface, refer to section 8 "Software Documentation".

6.6.3 JTAG Debug

Optionally, the conga-SMX8-Mini can offer an onboard JTAG debug interface via a 10 pin PicoBlade connector (X3) (assembly option). The connector pinout is described in the table below:

Table 10 JTAG Debug Connector (X3) Pinout Description

Pin	SoC Signal	Description
1	JTAG_VREF	+1.8V
2	JTAG_TMS	Test mode select
3	GND	Ground
4	JTAG_TCK	Test clock input
5	GND	Ground
6	JTAG_TDO	Test data output
7	JTAG_MOD	Should not be used
8	JTAG_TDI	Test data input
9	NC	Not Connected
10	POR_B	System Reset (JTAG_SRST#)



Connector Type

X3: Molex PicoBlade 0532611071 (10 Circuits, 1.25mm Pitch, Right-Angle, Friction Lock)

Mates with Molex PicoBlade Cable Assembly Series 15134 with 10 Circuits

7 Signal Descriptions and Pinout Tables

Click on the screenshot below to directly download the conga-SMX8-Mini pinout as an Excel file:

X1A + X1B - SX8M SMARC Edge Connection						
SX8M / conga-SMX8-Mini Interface	i.MX8MM Ball Name	i.MX8MM BGA486 Ball	SMARC Pin Name	SMARC Pin	Remark	alt. Function
SMARC Management Pins	SD1_STROBE	R24	SMB_ALERT_1V8#	P1		
SMARC CSI1 I2C Support	I2C3_SCL	E10	CSI1_TX+ / I2C_CAM1_CK	S1	CSI1 option is not populated by default	
	GND			P2		
SMARC CSI1 I2C Support	I2C3_SDA	F10	CSI1_TX- / I2C_CAM1_DAT	S2	CSI1 option is not populated by default	
SMARC CSI1 MIPI-CSI 4ch	MIPI_CSI_CLK_P	B16	CSI1_CK+	P3	CSI1 option is not populated by default	
	GND			S3		
SMARC CSI1 MIPI-CSI 4ch	MIPI_CSI_CLK_N	A16	CSI1_CK-	P4	CSI1 option is not populated by default	
n.c. - reserved			RSVD	S4		
n.c. - not supported			GBE1_SDP	P5		
SMARC CSIO I2C Support	I2C3_SCL	E10	CSIO_TX+ / I2C_CAM0_CK	S5		
SMARC Gigabit Ethernet 0			GBE0_SDP	P6	Option, n.c. by default	
SMARC CSI Master clock output	GPIO1_IO14	AC9	CAM_MCK	S6		
SMARC CSI1 MIPI-CSI 4ch	MIPI_CSI_DD_P	B14	CSI1_RX0+	P7	CSI1 option is not populated by default	
SMARC CSIO I2C Support	I2C3_SDA	F10	CSIO_TX- / I2C_CAM0_DAT	S7		
SMARC CSI1 MIPI-CSI 4ch	MIPI_CSI_DD_N	A14	CSI1_RX0-	P8	CSI1 option is not populated by default	
SMARC CSIO MIPI-CSI	MIPI_CSI_CLK_P	B16	CSIO_CK+	S8		

Alternatively, you can find the conga-SMX8-Mini pinout by selecting it from the drop-down list at:

https://git.congatec.com/arm-nxp/imx8-family/doc/cgtimx8_pinlist/tree/master

The SMARC signals are described in the SMARC Hardware Specification publicly available at:

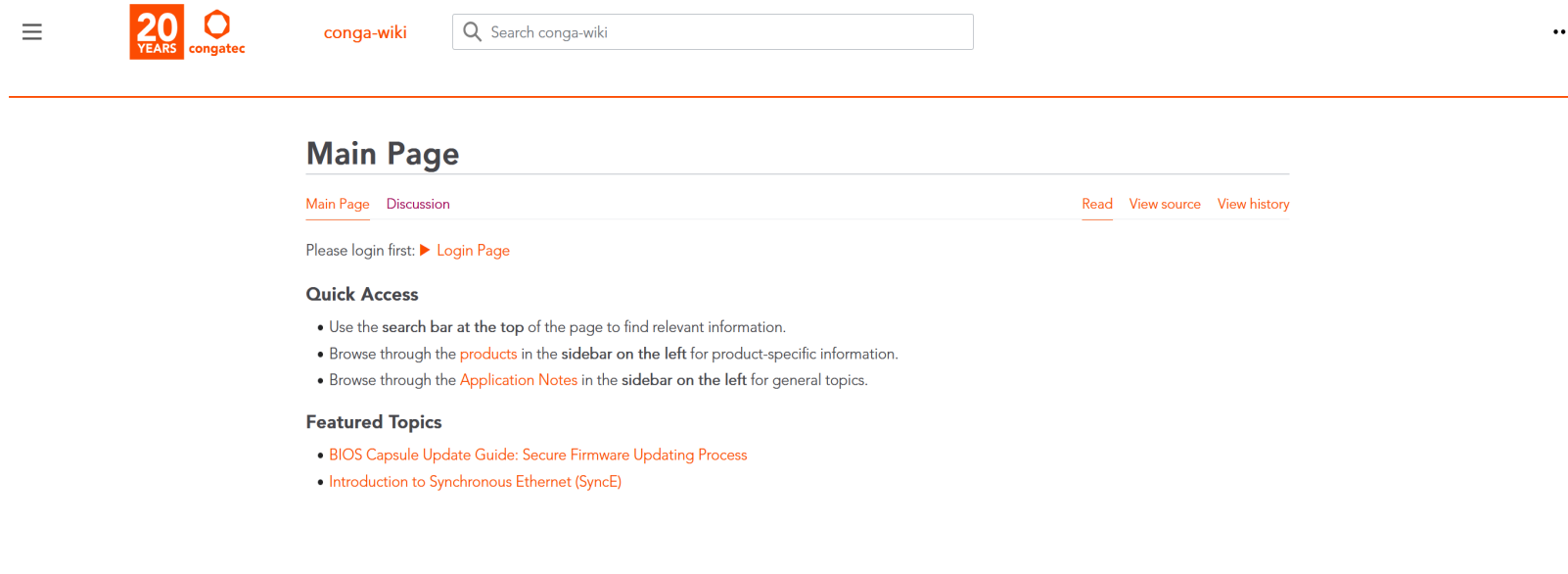
<https://sget.org>

The SoC signals are described in the i.MX 8M Mini Applications Processor Reference Manual publicly available at:

<https://www.nxp.com>

8 Software Documentation

Click on the screenshot below to open the conga-SMX8-Mini software documentation in your browser:



<https://wiki.congatec.com/wiki/Category:Conga-SMX8-Mini>

Alternatively, you can find the conga-SMX8-Mini software documentation by selecting it from the navigation menu at:

<https://wiki.congatec.com>