



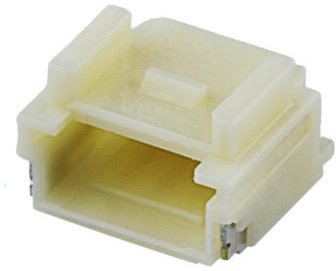
Part Number : [2035620405](#)

Product Description : 1.00mm Pitch, Pico-Clasp PCB Header, Single Row, Right-Angle, Surface Mount, 0.38µm Gold Plated, Outer Positive Lock, 4 Circuits, Natural

Series Number : 203562

Status : Active

Product Category : PCB Headers and Receptacles



Documents and Resources

Drawings

[2035620405 sd.pdf](#)

3D Models and Design Files

[STEP AP242](#)

[SOLIDWORKS](#)

[Creo](#)

[Symbol and Footprint \(Multi-Format\)](#)

[2035620405.dxf](#)

Specifications

[5013300000-AS-000.pdf](#)

[2035629200-200.pdf](#)

[5019390000-PS-001.pdf](#)


[5019391000-PS-001.pdf](#)

[5019391000-PS-CHI-001.pdf](#)

[5019391000-PS-JAP-001.pdf](#)

Product Environment Compliance

Compliance

| | |
|------------|---|
| GADSL/IMDS | Compliant with Exemption 44; 33 |
| China RoHS |  per SJ/T 11365-2006 |
| EU ELV | Not Relevant |

| | |
|--------------------|--|
| Low-Halogen Status | Not Low-Halogen per IEC 61249-2-21 |
| REACH SVHC | Not Contained per D(2025)6375-DC (05 Nov 2025) |
| EU RoHS | Compliant per EU 2015/863 |

Compliance Statements

- EU RoHS
- REACH SVHC
- Low-Halogen

Industry Documents

- IPC 1752A Class C
- IPC 1752A Class D
- Molex Product Compliance Declaration
- IEC-62474
- chemSHERPA (xml)

Substances of Interest

- PFAS

EU RoHS Certificate of Compliance

Additional Product Compliance Information

Part Details

General

| | |
|----------------|---|
| Status | Active |
| Category | PCB Headers and Receptacles |
| Series | 203562 |
| Description | 1.00mm Pitch, Pico-Clasp PCB Header, Single Row, Right-Angle, Surface Mount, 0.38µm Gold Plated, Outer Positive Lock, 4 Circuits, Natural |
| Application | Signal, Wire-to-Board |
| Component Type | PCB Header |
| Product Name | Pico-Clasp |
| UPC | 191128170109 |

Electrical

| | |
|-------------------------------|------|
| Current - Maximum per Contact | 1.5A |
|-------------------------------|------|

| | |
|-------------------|------------------|
| Voltage - Maximum | 100V AC (RMS)/DC |
|-------------------|------------------|

Physical

| | |
|--------------------------------|-----------------------|
| Breakaway | No |
| Circuits (Loaded) | 4 |
| Circuits (maximum) | 4 |
| Color - Resin | Natural |
| Durability (mating cycles max) | 30 |
| First Mate / Last Break | No |
| Glow-Wire Capable | No |
| Guide to Mating Part | No |
| Keying to Mating Part | None |
| Lock to Mating Part | Yes |
| Mated Height | 4.75mm |
| Material - Metal | Phosphor Bronze |
| Material - Plating Mating | Gold |
| Material - Plating Termination | Gold |
| Material - Resin | Polyamide |
| Net Weight | 130.480/mg |
| Number of Rows | 1 |
| Orientation | Right Angle |
| Packaging Type | Embossed Tape on Reel |
| PCB Locator | No |
| PCB Retention | Yes |
| Pitch - Mating Interface | 1.00mm |
| Plating min - Mating | 0.380µm |
| Plating min - Termination | 0.051µm |
| Polarized to Mating Part | Yes |
| Polarized to PCB | No |
| Shrouded | Fully |
| Stackable | No |
| Temperature Range - Operating | -40° to +105°C |
| Termination Interface Style | Surface Mount |

Mates With / Use With

Mates with Part(s)

| Description | Part Number |
|---|---------------|
| 1.00mm Pitch, Pico-Clasp Low-Halogen Single Row Receptacle Housings | <u>501939</u> |

This document was generated on Jan 23, 2026