

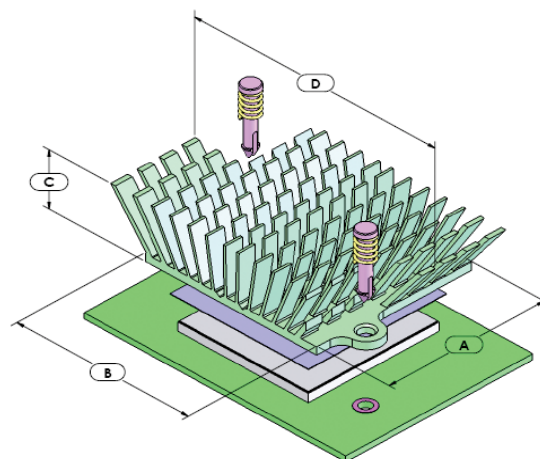


maxiFLOW™ Cross Cut High Performance Heat Sinks with Metal Push Pin

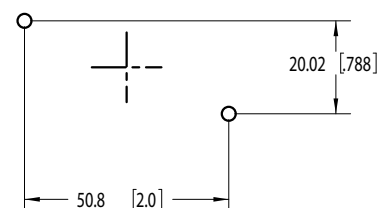
ATS PART # ATS-1043-C2-R0

Features & Benefits

- » For larger heat sinks and higher pre-loads, push pins with compression springs are an effective mounting choice. The push pin has a flexible barb at the end that is designed to engage with a pre-drilled hole in a PWB. The compression spring adds the necessary force to hold the assembly together. Provides better thermal performance than comparable size straight fin and pin fin heat sinks.
- » Features proven high performance maxiFLOW™ heat sink spread fin array to maximize cooling surfaces.
- » Ideal for tight spaced components where wider heat sinks can't be used.
- » Provided with pre-assembled thermal interface material centered on base.
- » Brass pushpin with steel compression spring.
- » Recommended through hole size in PCB is 3.00 mm.



HOLE PATTERN B



**Image above is for illustration purposes only.*

Thermal Performance

AIR VELOCITY		THERMAL RESISTANCE (°C/W UNDUCTED)	
FT/MIN	M/S	AIR FLOW STRAIGHT	AIR FLOW SIDEWAYS
200	1.0	1.9	3.6
300	1.5	1.6	2.8
400	2.0	1.3	2.1
500	2.5	1.1	1.6
600	3.0	1.0	1.3

Product Details

DIMENSION A	DIMENSION B	DIMENSION C	DIMENSION D	INTERFACE MATERIAL	FINISH
41 mm	45 mm	25 mm	79 mm	CHOMERICS T766	GREEN ANODIZED

NOTES:

- 1) Dimension C = heat sink height from bottom of the base to the top of the fin field.
- 2) Thermal performance data are provided for reference only. Actual performance may vary by application.
- 3) ATS reserves the right to update or change its products without notice to improve the design or performance.
- 4) Contact ATS to learn about custom options available.



ATS ADVANCED
THERMAL
SOLUTIONS, INC.
Innovations in Thermal Management®

For more information, to find a distributor or to place an order, visit www.qats.com or call: 781.769.2800 (North America); +31 (0) 3569 84715 (Europe).