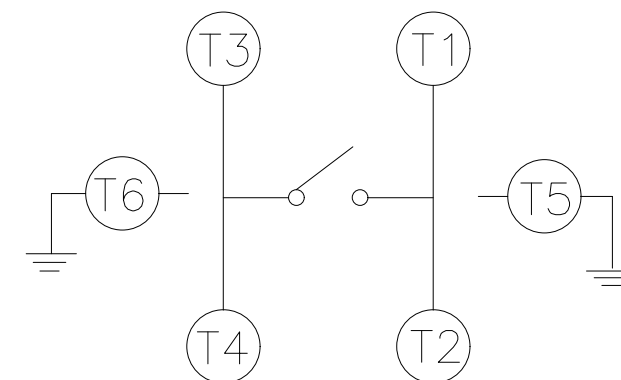
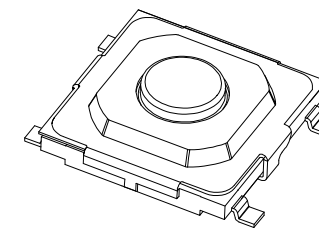
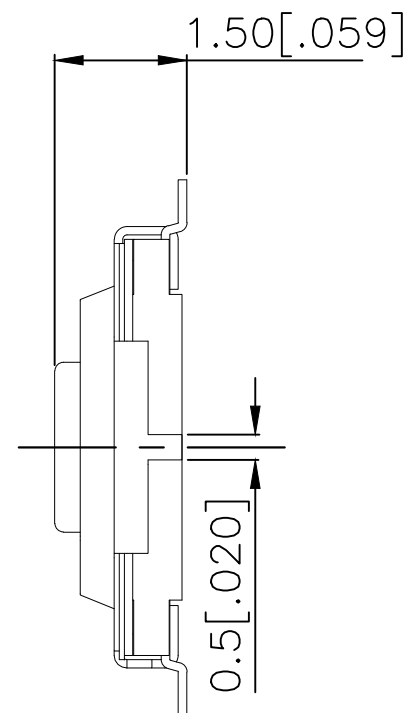
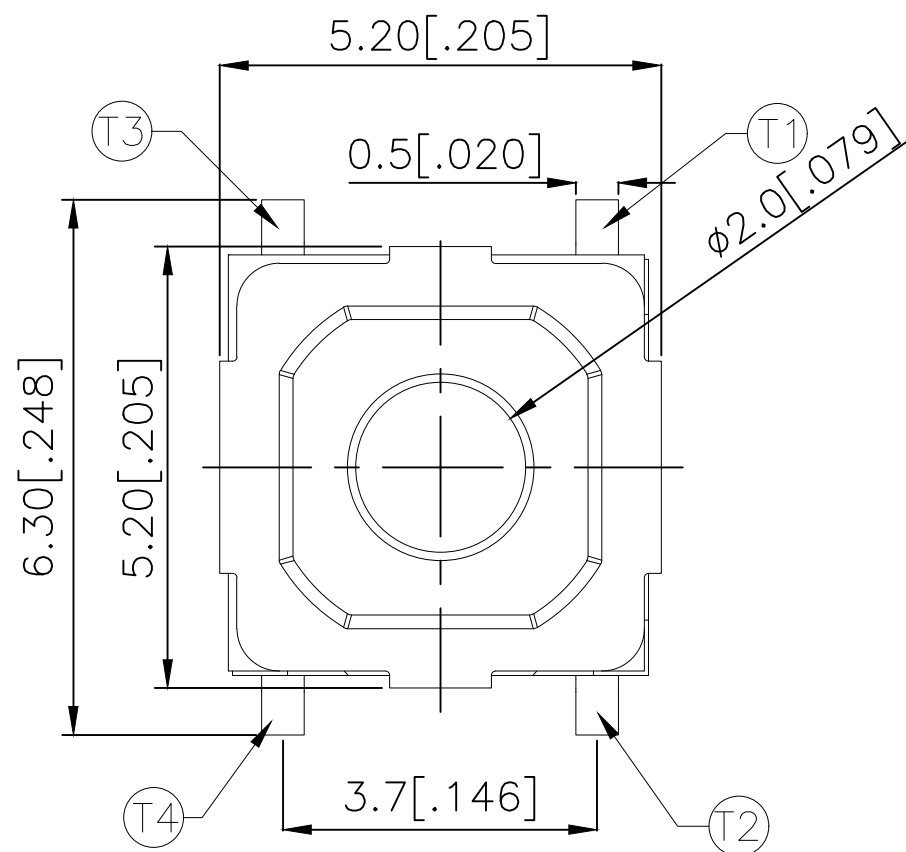
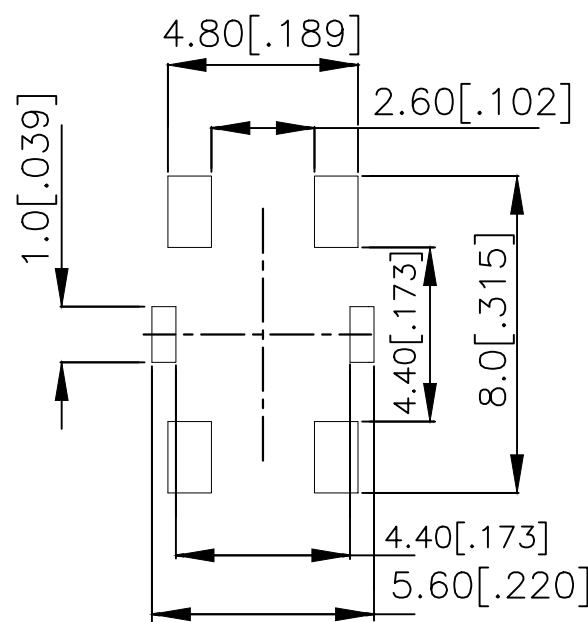
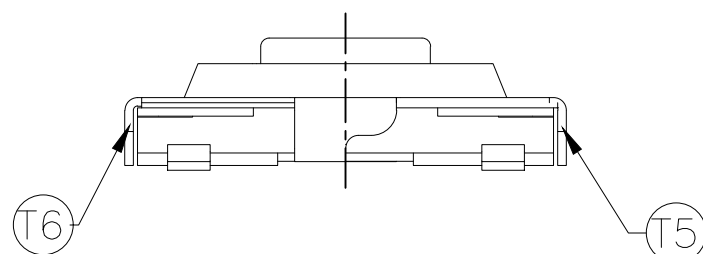


REVISIONS					
P	LTR	DESCRIPTION	DATE	DWN	APVD
	B	REVISED PER ECR-19-004770	10APR2019	SR	DD


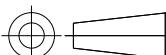


CIRCUIT DIAGRAM



P.C.B LAYOUT

260±50	MSLPT5252BG4MTR	2337237-4
160±50	MSLPT5252BG3MTR	2337237-3
100±50	MSLPT5252BG2MTR	2337237-2
70±50	MSLPT5252BG1MTR	2337237-1
ACTUATION FORCE (gf)	SMART PART NUMBER	PART NUMBER

THIS DRAWING IS A CONTROLLED DOCUMENT.		DWN GANESH C M 04JUL2018		<div>TE Connectivity Ltd.</div>									
		CHK ALEXANDER SHARPE 04JUL2018											
DIMENSIONS: mm [INCHES]		TOLERANCES UNLESS OTHERWISE SPECIFIED:		NAME  SWITCH, TACTILE, LOW-PROFILE, MINI, 5.2 x 5.2 x 1.5, GULLWING  —									
		0 PLC ± — 1 PLC ± — 2 PLC ± 0.2 [.008] 3 PLC ± — 4 PLC ± — ANGLES ± —											
MATERIAL  —		FINISH  —		SIZE A3		CAGE CODE 00779		DRAWING NO C-2337237		RESTRICTED TO  —			
CUSTOMER DRAWING								SCALE NTS		SHEET 1 of 3		REV B	

THIS DRAWING IS UNPUBLISHED.

RELEASED FOR PUBLICATION

- , - .

© COPYRIGHT — TE Connectivity Ltd.

ALL RIGHTS RESERVED.

## NOTES:

## 1. MATERIALS:

TERMINAL: COPPER ALLOY, SILVER OVER NICKEL FINISH  
BASE: THERMOPLASTIC, BLACK  
ACTUATOR: STEEL, NICKEL FINISH  
TAPE: POLYTETRAFLUOROETHYLENE  
CONTACT: STAINLESS STEEL, SILVER OVER NICKEL FINISH  
COVER: NICKEL SILVER

## 2. COMPLIANCE:

ALL MATERIALS AND FINISHES SHALL COMPLY WITH EU  
DIRECTIVE 2002/95/EC OF 27JAN2003(RoHS)

## 3. SPECIFICATIONS:

RATING: 50 mA, 12V DC  
CONTACT RESISTANCE: 100mΩ MAXIMUM (INITIAL)  
INSULATION RESISTANCE: 100MΩ MINIMUM (INITIAL)  
DIELECTRIC STRENGTH: 250V AC, 1 MINUTE  
OPERATING LIFE: 2337237-1 (70gf) = 1,000,000 CYCLES WITH LOAD  
2337237-2 (100gf) = 1,000,000 CYCLES WITH LOAD  
2337237-3 (160gf) = 1,000,000 CYCLES WITH LOAD  
2337237-4 (260gf) = 200,000 CYCLES WITH LOAD

TRAVEL:  $0.25 \pm 0.1$   $0.2$  [ $0.010 \pm 0.004$ ]

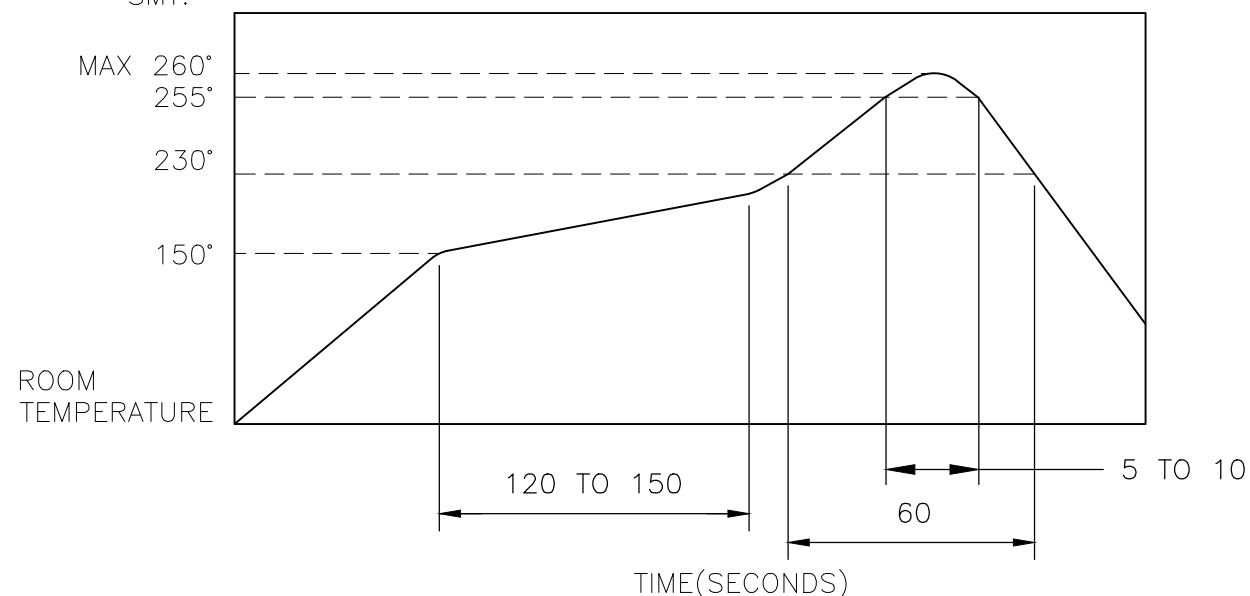
ACTUATION FORCE: 2337237-1 = 70±50gf  
2337237-2 = 100±50gf  
2337237-3 = 160±50gf  
2337237-4 = 260±50gf

OPERATING TEMPERATURE: -25° TO 70°C

STORAGE TEMPERATURE: -30° TO 80°C

## 4. SOLDER CONDITIONS :

SMT:



THE CONDITON NOTED ABOVE IS THE TEMPERATURE OF THE COPPER FOIL ON THESURFACE OF THE PCB. THERE ARE CASES WHERE THE TEMPERATURE OF THE BOARD GREATLY DIFFERS FROM THE SURFACE OF THE SWITCH. DO NOT ALLOW THE SURFACE TEMPERATURE OF THE SWITCH TO EXCEED 260°C.

## REVISIONS

P	LTR	DESCRIPTION	DATE	DWN	APVD
	-	SEE SHEET 1	-	-	-

## MANUAL SOLDERING:

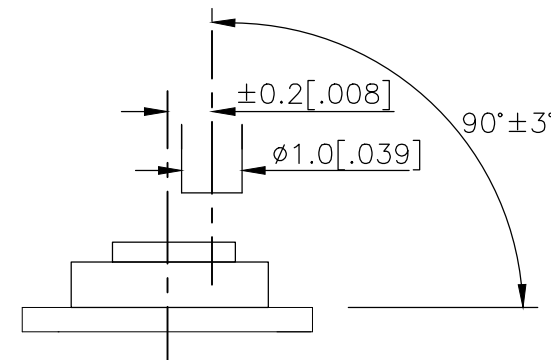
SOLDERING TEMPERATURE	350°C MAXIMUM
CONTINUOUS SOLDERING TIME	5 SECONDS MAXIMUM

## HANDLING PRECAUTIONS:

1. CARE SHOULD BE EXERCISED SO THAT FLUX FROM THE TOP SURFACE OF THE PRINTED CIRCUIT BOARD DOES NOT ADHERE TO THE SWITCH.
2. DO NOT WASH THE SWITCH

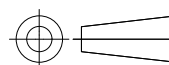
## 5. OPERATING PRECAUTIONS:

1. DO NOT ACTUATE THE SWITCH WITH EXCESSIVE FORCE
2. DISCONTINUE FORCE AFTER THE SWITCH HAS BEEN ACTUATED SO AS TO AVOID DEFORMATION OF THE COMPONENTS OF THE SWITCH. DEFORMATION OF THE COMPONENTS MAY CAUSE THE SWITCH TO MALFUNCTION.
3. ALIGN THE PLUNGER WITH THE SWITCH TO INSURE PROPER OPERATION



THIS DRAWING IS A CONTROLLED DOCUMENT.

DIMENSIONS:  
mm [INCHES]



MATERIAL

TOLERANCES UNLESS OTHERWISE SPECIFIED:

0 PLC ± -  
1 PLC ± -  
2 PLC ± 0.2 [.008]  
3 PLC ± -  
4 PLC ± -  
ANGLES ± -  
FINISH

DWN 04JUL2018

GANESH C M

CHK 04JUL2018

ALEXANDER SHARPE

APVD 04JUL2018

ALEXANDER SHARPE

PRODUCT SPEC

APPLICATION SPEC

WEIGHT

CUSTOMER DRAWING



TE Connectivity Ltd.

NAME

SWITCH, TACTILE, LOW-PROFILE, MINI,  
5.2 x 5.2 x 1.5, GULLWING

SIZE

CAGE CODE

DRAWING NO

RESTRICTED TO

A3

00779

C-2337237

SCALE NTS

SHEET 2 OF 3

REV B

THIS DRAWING IS UNPUBLISHED.

RELEASED FOR PUBLICATION

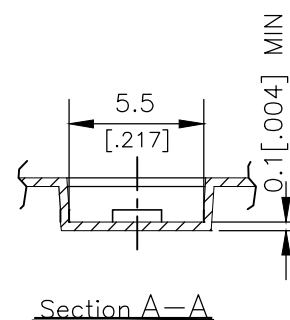
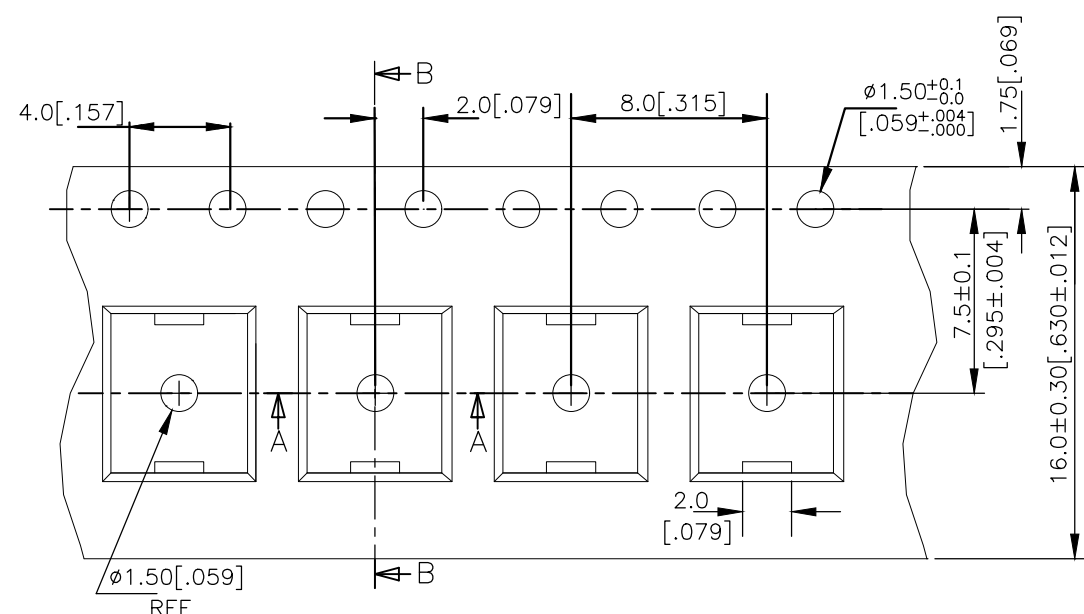
© COPYRIGHT — TE Connectivity Ltd.

ALL RIGHTS RESERVED.

## REVISIONS

P	LTR	DESCRIPTION	DATE	DWN	APVD
—	—	SEE SHEET 1	—	—	—

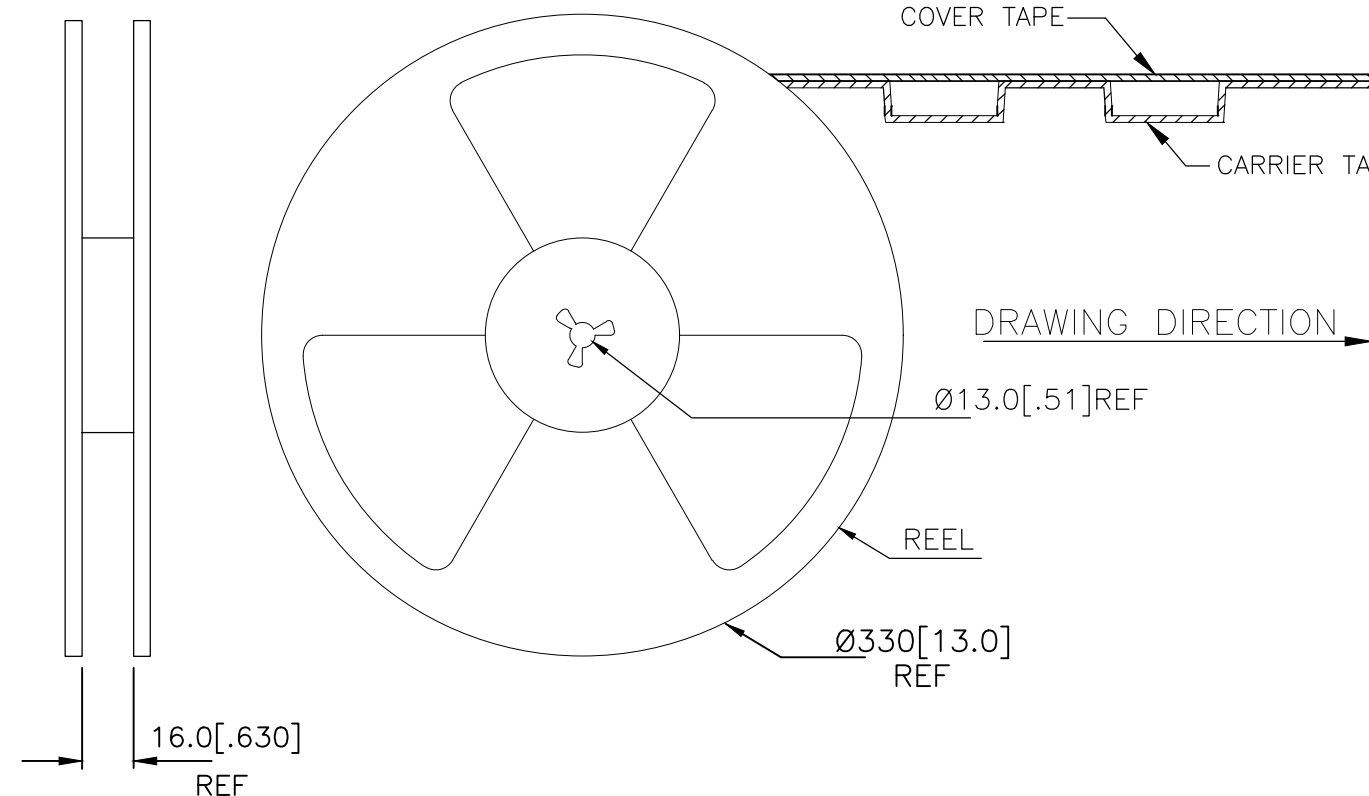
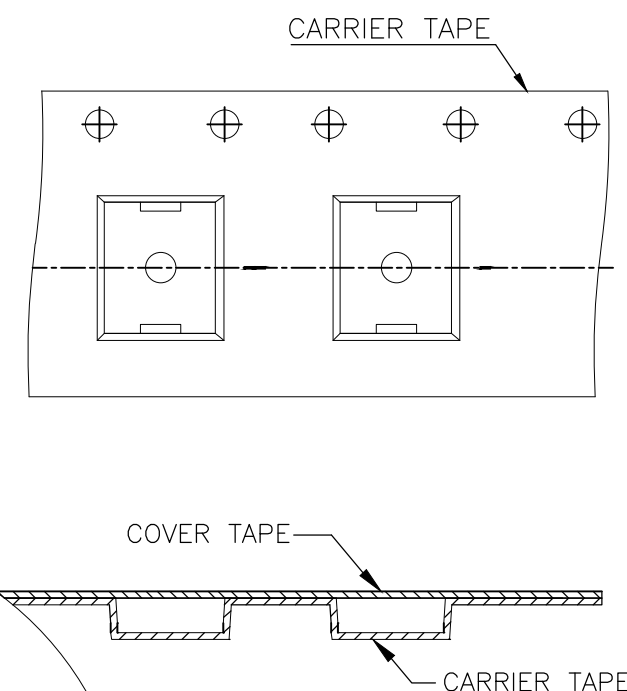
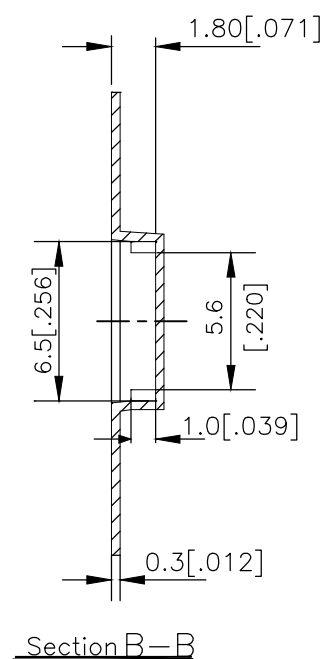
## THE DIMENSIONS OF CARRIER TAPE AND REEL:


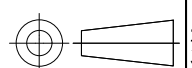


## 6. PACKAGING:

1. THE TAPE AND REEL ARE SHOWN FOR CUSTOMER APPLICATION REFERENCE. PACKAGING NOTES 3 AND 4 ARE REQUIRED BUT NOT ILLUSTRATED.
2. 4,000 SWITCHES PER REEL.
3. THE REEL, DESICCANT POUCH AND HUMIDITY CARD ARE SEALED IN A MOISTURE BARRIER BAG PER THE CURRENT REVISION OF IPC/JEDEC J-STD-033, MSL 2A REQUIREMENTS.
4. THE MOISTURE BARRIER BAG IS LABELED PER THE CURRENT REVISION OF IPC/JEDEC J-STD-033, MSL 2A REQUIREMENTS.

## ORIENTATION OF PILOT HOLES



THIS DRAWING IS A CONTROLLED DOCUMENT.		DWN GANESH C M 04JUL2018	 TE Connectivity Ltd.		
		CHK ALEXANDER SHARPE 04JUL2018			
DIMENSIONS: mm [INCHES]		APVD ALEXANDER SHARPE 04JUL2018	NAME SWITCH, TACTILE, LOW-PROFILE, MINI, 5.2 x 5.2 x 1.5, GULLWING		
		PRODUCT SPEC	—		
		APPLICATION SPEC	—		
MATERIAL		WEIGHT	SIZE A3	CAGE CODE 00779	DRAWING NO C-2337237
		FINISH	RESTRICTED TO —		
			CUSTOMER DRAWING		
			SCALE NTS	SHEET 3 OF 3	REV B