



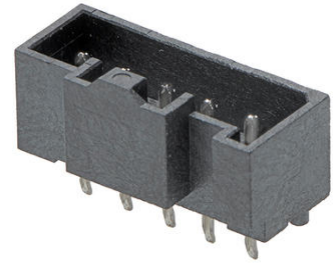
Part Number : [2078430005](#)

Product Description : KK Plus 250 Header, 2.50mm Pitch, Vertical, Fully Shrouded, Tin (Sn) Plating, 5 Circuits, with Peg, Glow-Wire Capable

Series Number : 207843

Status : Active

Product Category : PCB Headers and Receptacles



Documents and Resources

Drawings

[2078430005_sd.pdf](#)

[2078430000-PK-000.pdf](#)

3D Models and Design Files

[STEP AP242](#)

[SOLIDWORKS](#)

[Creo](#)

[Symbol and Footprint \(Multi-Format\)](#)

Specifications

[2079020001-AS-000.pdf](#)

[2079020001-PS-000.pdf](#)

[2079020001-PS-CH-000.pdf](#)

[2079020001-PS-ES-000.pdf](#)


[2079020001-PS-JP-000.pdf](#)

[2079020001-PS-SK-000.pdf](#)

[2079020000-TS-000.pdf](#)

Product Environment Compliance

Compliance

GADSL/IMDS	Not Relevant
China RoHS	 per SJ/T 11365-2006
EU ELV	Not Relevant

Low-Halogen Status	Low-Halogen per IEC 61249-2-21
REACH SVHC	Not Contained per D(2025)6375-DC (05 Nov 2025) SCIP:01c369f0-9890-4b2e-ae7e-0bea0bc91ee4
EU RoHS	Compliant per EU 2015/863

Compliance Statements

- EU RoHS
- REACH SVHC
- Low-Halogen

Industry Documents

- IPC 1752A Class C
- IPC 1752A Class D
- Molex Product Compliance Declaration
- IEC-62474
- chemSHERPA (xml)

Substances of Interest

- PFAS

EU RoHS Certificate of Compliance

Additional Product Compliance Information

Part Details

General

Status	Active
Category	PCB Headers and Receptacles
Series	207843
Description	KK Plus 250 Header, 2.50mm Pitch, Vertical, Fully Shrouded, Tin (Sn) Plating, 5 Circuits, with Peg, Glow-Wire Capable
Application	Power, Wire-to-Board
Component Type	PCB Header
Product Name	KK Plus
UPC	191130123155

Agency

CSA	152514
-----	--------

UL	E29179
----	--------

Electrical

Current - Maximum per Contact	6.5A
Voltage - Maximum	250V AC (RMS)/DC

Physical

Breakaway	No
Circuits (Loaded)	5
Circuits (maximum)	5
Color - Resin	Black
Durability (mating cycles max)	25
First Mate / Last Break	No
Flammability	94V-0
Glow-Wire Capable	Yes
Guide to Mating Part	No
Keying to Mating Part	None
Lock to Mating Part	Yes
Material - Metal	Brass
Material - Plating Mating	Tin
Material - Plating Termination	Tin
Material - Resin	Liquid Crystal Polymer
Net Weight	0.509/g
Number of Rows	1
Orientation	Vertical
Packaging Type	Bag
PCB Locator	No
PCB Retention	None
PCB Thickness - Recommended	1.60mm
PC Tail Length	3.45mm
Pitch - Mating Interface	2.50mm
Pitch - Termination Interface	2.50mm
Polarized to Mating Part	Yes
Polarized to PCB	Yes
Shrouded	Fully

Stackable	No
Temperature Range - Operating	-40° to +105°C
Termination Interface Style	Through Hole

Mates With / Use With

Mates with Part(s)

Description	Part Number
KK Plus 250 Single Row Receptacle Housings	<u>207841</u>

This document was generated on Jan 01, 2026