

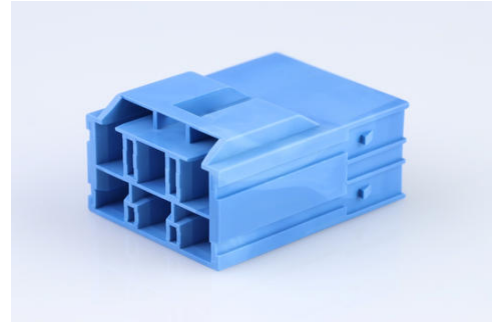
Part Number : [2034382601](#)

Product Description : CP-6.5 Plug Housing, 6.50mm Pitch, Dual Row, 6 Circuits, Blue, Glow-Wire Capable

Series Number : 203438

Status : Active

Product Category : Connector Housings



Documents and Resources

Drawings

[2034382601_sd.pdf](#)

[2034380001-PK-000.pdf](#)

3D Models and Design Files

[STEP AP242](#)

[SOLIDWORKS](#)

[Creo](#)


Specifications

[2034380001-PS-000.pdf](#)

[2034380001-TS-000.pdf](#)

Product Environment Compliance

Compliance

GADSL/IMDS	Not Relevant
China RoHS	 per SJ/T 11365-2006
EU ELV	Not Relevant
Low-Halogen Status	Not Low-Halogen per IEC 61249-2-21
REACH SVHC	Contains 1,1'-(Ethane-1,2-diyl)bis[pentabromobenzene] per D(2025)7771-DC (04 Feb 2026)
EU RoHS	Compliant per EU 2015/863

[Compliance Statements](#)

- EU RoHS
- REACH SVHC
- Low-Halogen

Industry Documents

- IPC 1752A Class C
- IPC 1752A Class D
- Molex Product Compliance Declaration
- IEC-62474
- chemSHERPA (xml)

Substances of Interest

- PFAS

EU RoHS Certificate of Compliance

Additional Product Compliance Information

Part Details

General

Status	Active
Category	Connector Housings
Series	203438
Description	CP-6.5 Plug Housing, 6.50mm Pitch, Dual Row, 6 Circuits, Blue, Glow-Wire Capable
Application	Power, Wire-to-Wire
Product Name	CP-6.5
UPC	191130084470

Agency

CSA	LR19980
UL	E29179

Physical

Circuits (maximum)	6
Color - Resin	Blue
Flammability	94V-0
Gender	Plug
Glow-Wire Capable	Yes
Keying to Mating Part	Yes

Lock to Mating Part	Yes
Material - Resin	Nylon
Net Weight	4.709/g
Number of Rows	2
Packaging Type	Bag
Panel Mount	No
Pitch - Mating Interface	6.50mm
Pitch - Termination Interface	6.50mm
Polarized to Mating Part	Yes
Temperature Range - Operating	-40° to +105°C

Mates With / Use With

Mates with Part(s)

Description	Part Number
CP-6.5 Receptacle Housing, Glow-Wire Capable, 6.50mm Pitch, Dual Row, 6 Circuits, Blue	<u>1512072601</u>

Use with Part(s)

Description	Part Number
CP-6.5 Terminal Position Assurance (TPA) Retainer, 3 Circuits	<u>511430305</u>
CP-6.5 Wire-to-Wire Male Crimp Terminals	<u>205032</u>

This document was generated on Apr 30, 2026