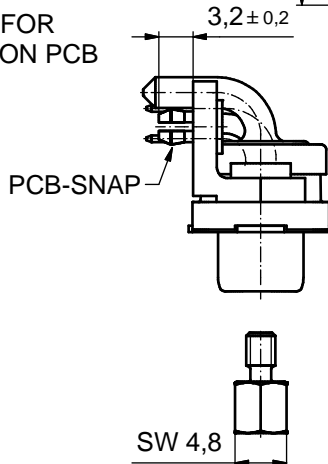
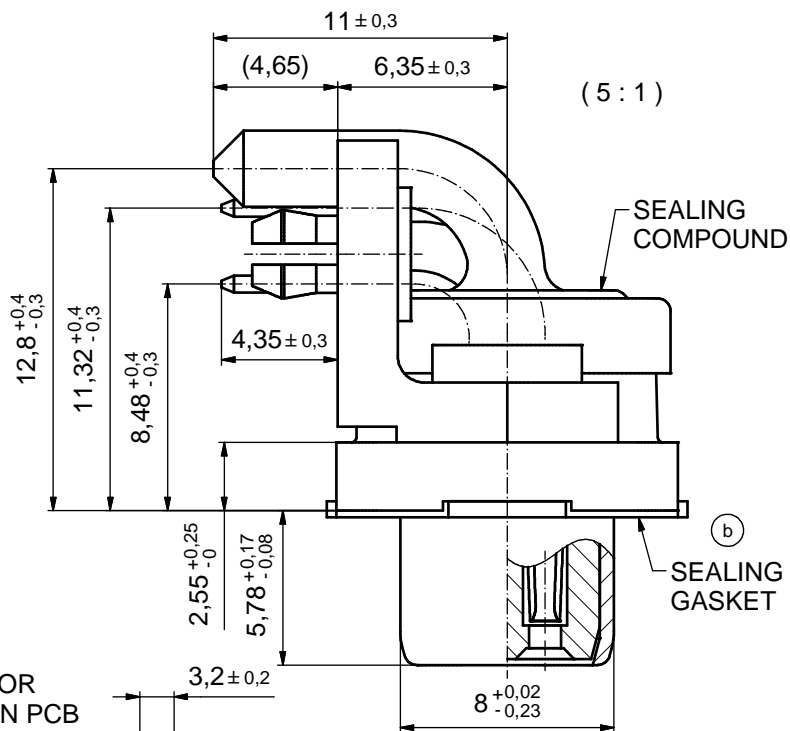
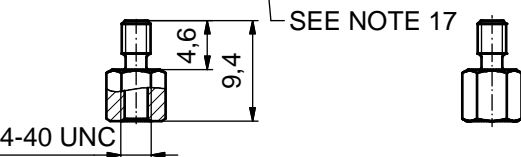
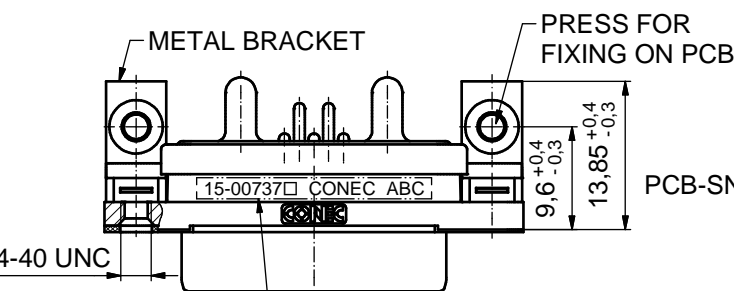
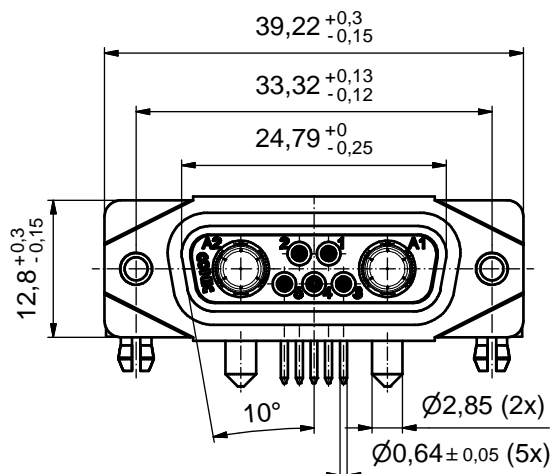
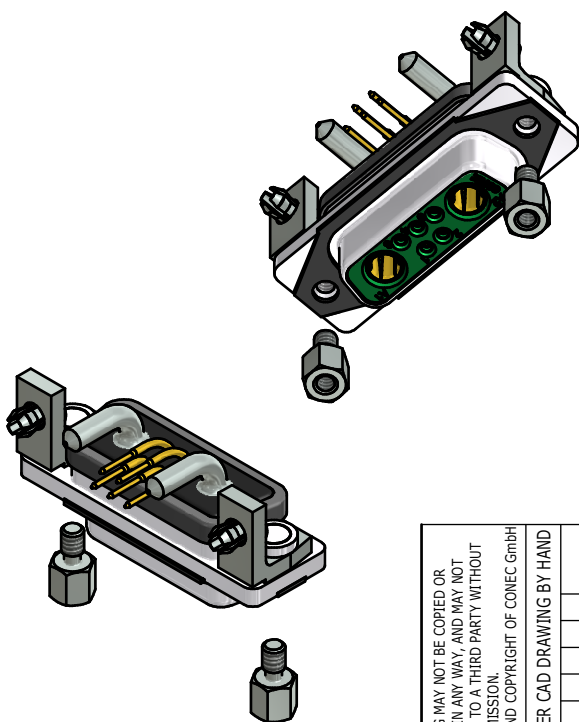


AT ALL TIMES WATER RESISTANT CONNECTORS NOT IN USE SHOULD BE COVERED WITH A CONEC WATER RESISTANT CAP OR WATER TIGHT HOOD.



(b) NOTES:

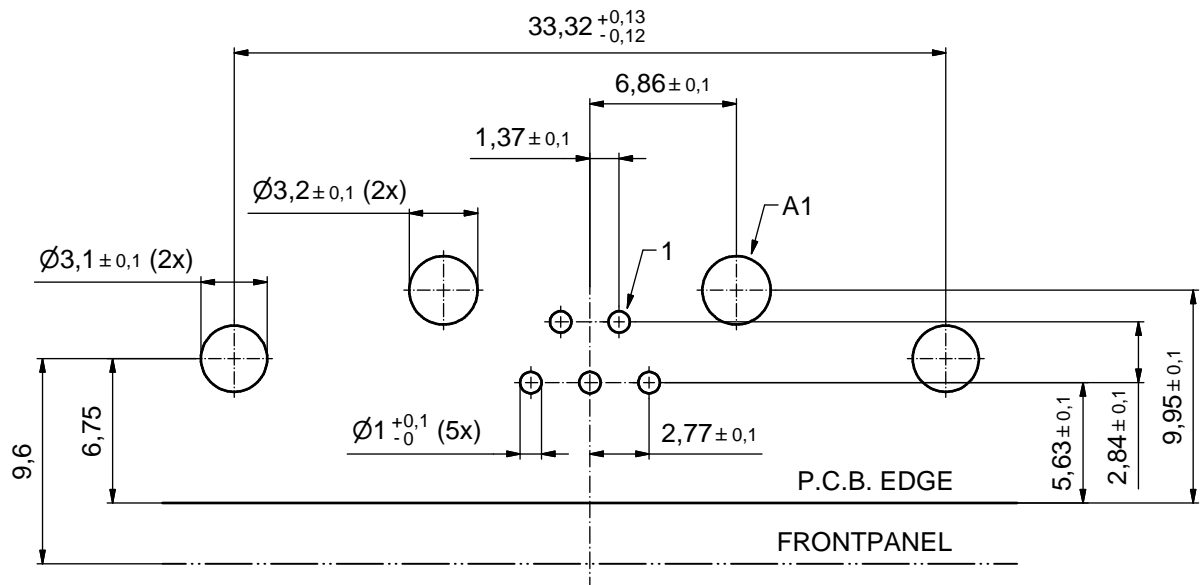
1. FOR WAVESOLDERING (SOLDER BATH TEMPERATURE 265°C FOR 8 SEC. AND SOLDER PREHEAT 150°C FOR 180 SEC.)
2. IP RATING: IP 67
3. SEALED TO WITHSTAND PRESSURE UP TO 1,45 PSI FOR 30 MINUTES AFTER SOLDERING
4. METAL SHELL: ZINC DIE CAST; min. 50µin NICKEL PLATING over COPPER
5. INSULATOR: PBT GF UL 94 V-0
6. EXTENSION: HIGH TEMPERATURE PLASTIC UL 94-V0
7. SEALING GASKET: SILICONE
8. SEALING COMPOUND: EPOXY
9. SIGNAL CONTACTS: COPPER ALLOY PLATING (SEE PART NO.):
30µin HARD GOLD over min. 50µin NICKEL if 1□ in PART NO.
GOLD FLASH over NICKEL if 3□ in PART NO.
10. HIGH POWER CONTACTS 20A: COPPER ALLOY PLATING, MATING SIDE (SEE PART NO.):
□ PLEASE ADD 1 for 30µin HARD GOLD over min. 50µin NICKEL
□ PLEASE ADD 3 for GOLD FLASH over NICKEL
PLATING, TERMINATION SIDE: 160-240µin TIN over min. 80µin NICKEL
11. METAL BRACKETS: ZINC DIE CAST; 300µin COPPER/40-120µin NICKEL/120-200µin TIN
12. WASHERS: COPPER ALLOY; 80µin NICKEL
13. PCB-SNAPS: COPPER ALLOY; min. 200µin TIN over 80µin NICKEL
PCB-HOLE: Ø3,1 ± 0,1; PCB THICKNESS 1,6mm
14. HEXLOCKING SCREWS: STAINLESS STEEL
15. P.C.B. HOLE DRILLINGS and RECOMMENDED PANEL CUT-OUT ON SHEET 2
16. RECOMMENDED TORQUE FOR MOUNTING SCREW
35Ncm (3,1 in.LB) / max. 67Ncm (6 in.LB)
17. CONNECTOR IS PART MARKED: 15-00737□ CONEC ABC (see note 10)



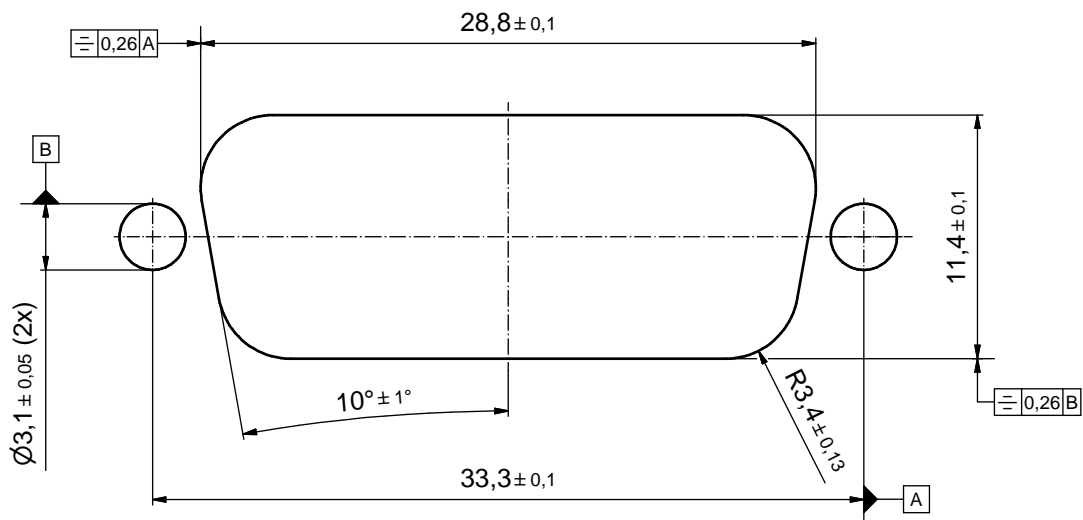
RoHS compliant

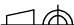

DO NOT ALTER CAD DRAWING BY HAND				tolerance		scale: 2:1 (5:1)
				dim. in mm		material: SEE NOTES
THIS DRAWING MAY NOT BE COPIED OR REPRODUCED IN ANY WAY, AND MAY NOT BE PASSED ON TO A THIRD PARTY WITHOUT WRITTEN PERMISSION. OWNERSHIP AND COPYRIGHT OF CONEC GmbH				date	name	title:
				drawn 18.09.2015	Lehmenkühler	D-SUB COMBINATION FEMALE 90° 7W2S SOLDER PIN ANGLED with closed 4-40 UNC thread, metal bracket, snap
				appd. 21.09.2015	Fischer	
				norm		
2 x b				d-old		dwg no:
				a	Original	DIN-A3
rev.	description	date	name			sh: 1
				part no: 15-00737□ (see note 10)		

P.C.B. HOLE DRILLINGS (P.C.B. TOP SIDE)



RECOMMENDED PANEL CUT-OUT



THIS DRAWING MAY NOT BE COPIED OR REPRODUCED IN ANY WAY, AND MAY NOT BE PASSED ON TO A THIRD PARTY WITHOUT WRITTEN PERMISSION. OWNERSHIP AND COPYRIGHT OF CONEC GmbH DO NOT ALTER CAD DRAWING BY HAND					tolerance		 dim. in mm	scale: 4:1			
								material: SEE SHEET 1			
					date	name		title: P.C.B. HOLE DRILLINGS RECOMMENDED PANEL CUT-OUT D-SUB COMBINATION FEMALE 90° 7W2S ANGLED			
					drawn 18.09.2015	Lehmenkühler					
					appd. 21.09.2015	Fischer					
					norm						
					d-old						
									dwg no:		DIN-A3
	a	Original							15K1A1697		sh: 2
	rev.	description	date	name					part no: SEE SHEET 1		

CONEC®