



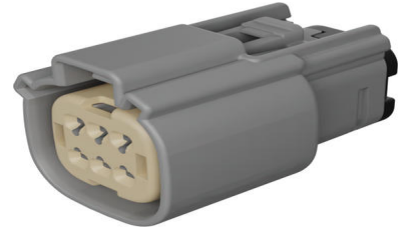
Part Number : [334720602](#)

Product Description : MX150 Mat-Sealed Female Connector Assembly, Dual Row, 6 Circuits, Keying Option B, without Connector Position Assurance, Light Gray

Series Number : 33472

Status : Active

Product Category : Connector Housings



Documents and Resources

Drawings

[334720602_sd.pdf](#)

[PK-31300-903-001.pdf](#)

3D Models and Design Files

[STEP AP242](#)

[SOLIDWORKS](#)

[Creo](#)

Specifications

[AS-33472-100-001.pdf](#)

[AS-33472-100-CH-001.pdf](#)


[AS-33472-100-FR-001.pdf](#)

[AS-33611-001-001.pdf](#)

[PS-33472-000-001.pdf](#)

Product Environment Compliance

Compliance

GADSL/IMDS	Compliant
China RoHS	 per SJ/T 11365-2006
EU ELV	Compliant per 2000/53/EC
Low-Halogen Status	Low-Halogen per IEC 61249-2-21
REACH SVHC	Contains Dodecamethylcyclohexasiloxane;

	Decamethylcyclopentasiloxane; Octamethylcyclotetrasiloxane per D(2025)7771-DC (04 Feb 2026)
EU RoHS	Compliant per EU 2015/863

Compliance Statements

- EU RoHS
- REACH SVHC
- Low-Halogen

Industry Documents

- IPC 1752A Class C
- IPC 1752A Class D
- Molex Product Compliance Declaration
- IEC-62474
- chemSHERPA (xml)

Substances of Interest

- PFAS

EU RoHS Certificate of Compliance

Additional Product Compliance Information

Part Details

General

Status	Active
Category	Connector Housings
Series	33472
Description	MX150 Mat-Sealed Female Connector Assembly, Dual Row, 6 Circuits, Keying Option B, without Connector Position Assurance, Light Gray
Application	Power, Wire-to-Board, Wire-to-Wire, Automotive
Product Name	MX150
UPC	800756537450

Agency

UL	E29179
----	--------

Physical

Circuits (maximum)	6
Color - Resin	Gray (Light)
Gender	Receptacle
Glow-Wire Capable	No
Keying to Mating Part	Yes
Lock to Mating Part	Yes
Material - Resin	SPS/Nylon
Net Weight	9.800/g
Number of Rows	2
Packaging Type	Partitioned Carton
Panel Mount	No
Pitch - Mating Interface	3.50mm
Polarized to Mating Part	Yes
Stackable	No
Temperature Range - Operating	-40° to +125°C

Solder Process Data

Lead-Free Process Capability	N/A
------------------------------	-----

Mates With / Use With

Mates with Part(s)

Description	Part Number
MX150 2x4 Dual Row Right-Angle Header, 8 Circuits, Keying Option A, Black, Solder Tail	348300801
MX150 Male Connector Assembly, Bulkhead Twist-Lock, Mat-Sealed Compatible, Dual Row, 6 Circuits, Keying Option B, Light Gray	348403420
MX150 Mat-Sealed Dual Row Male Connector Assemblies	33482

Use with Part(s)

Description	Part Number
MX150 Sealed Receptacle Cavity Plug	343454001

MX150 Backshell for Female Sealed Connector Assembly, 6 Circuit, with Rib	<u>349510610</u>
MX150 Backshell for Female Sealed Connector Assembly, 6 Circuit, without Rib	<u>349510620</u>
MX150 Female Terminals	<u>33001</u>
MX150 Female Terminals	<u>33012</u>

This document was generated on May 14, 2026