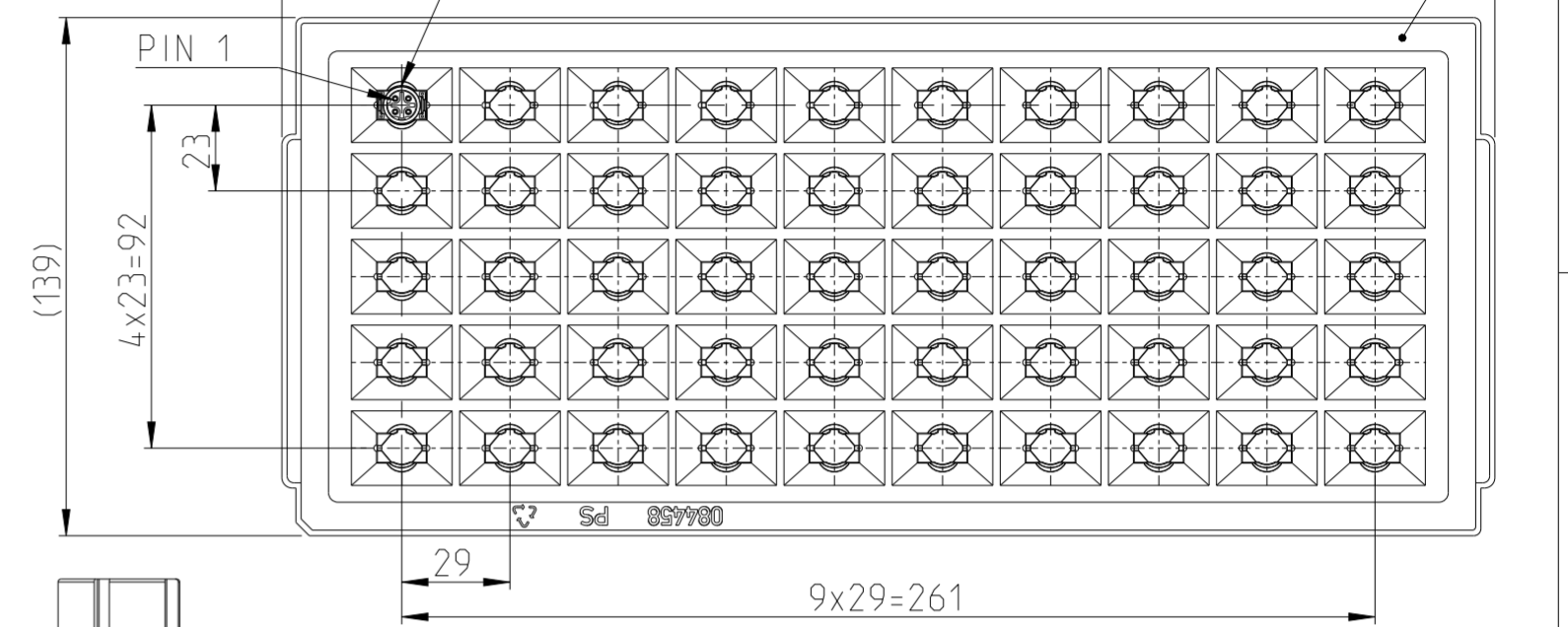


TAPE ON REEL PACKAGING ACCORDING TO DIN IEC 60286-3
PACKAGING UNIT: 100 PCS

REVISIONS					
P	LTR	DESCRIPTION	DATE	DWN	APVD
A1		NEW DRAWING	29AUG2023	ASB	JDB
J1		DRAWING RE-CREATED IN CREO	28DEC2023	ASB	JDB
J2		REEL CORE DIA CHANGE	23JUL2024	SS	LET

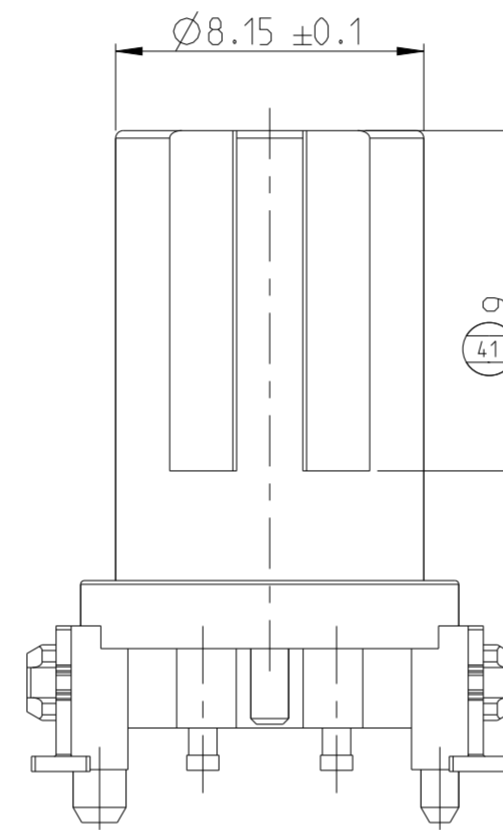
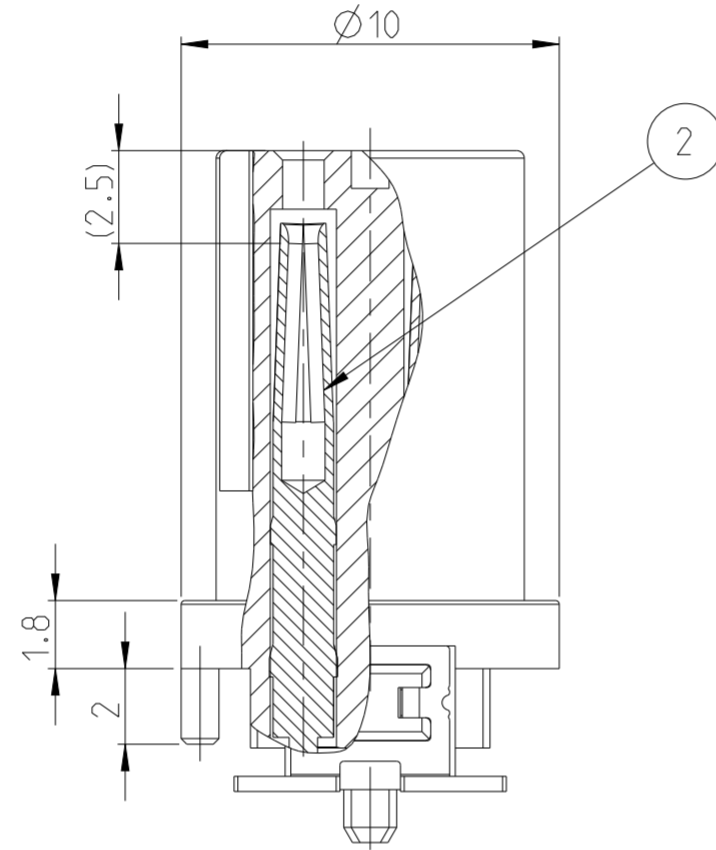
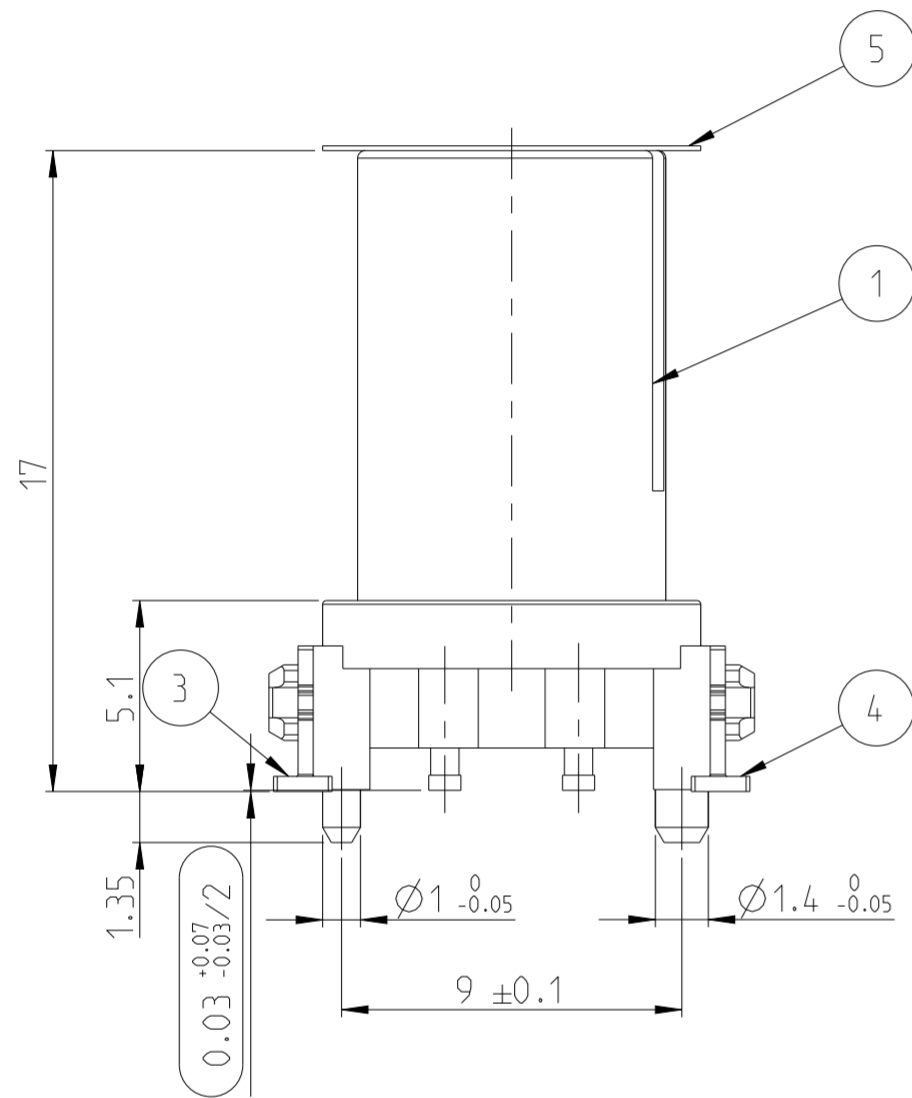
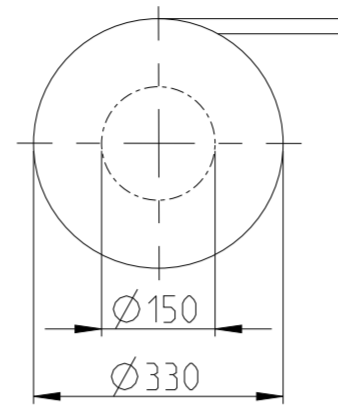
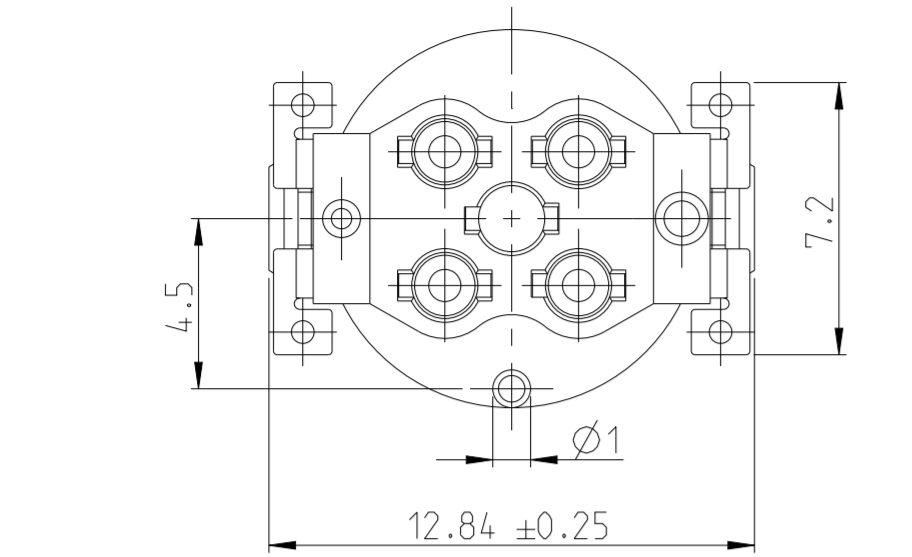
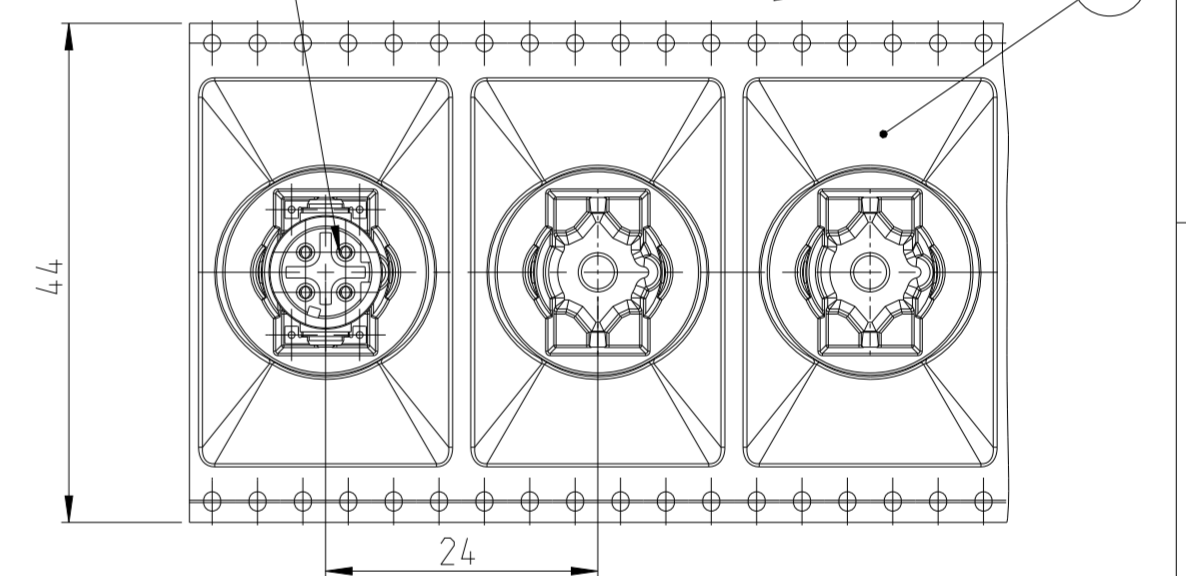
TRAY PACKAGING: PACKAGING UNIT 50 PCS
(325)

CONSIDER MOUNTING POSITION; CENTER BACK

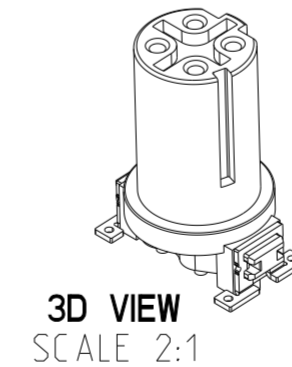
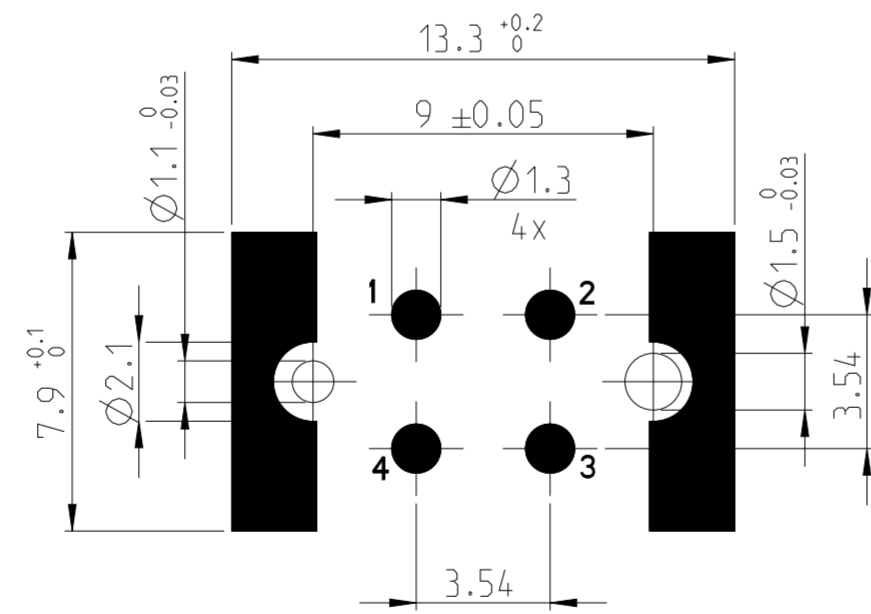
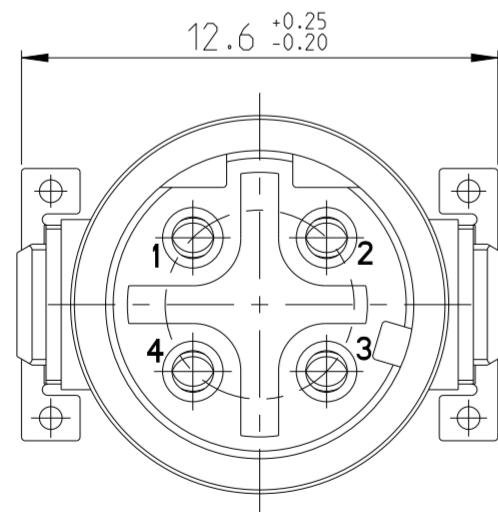


CONSIDER MOUNTING POSITION; PEG RIGHT

PIN 1 REEL OFF DIRECTION



PCB-LAYOUT PROPOSAL



OBSOLETE					
QTY	REV	DESCRIPTION	ITEM NO.		
-	-	TOP COVER	8		
-	-	TRAY PACKAGING	7		
1	1	TAPE & REEL	6		
1	-	PAD	5		
1	1	SOLDER CLIP LEFT	4		
1	1	SOLDER CLIP RIGHT	3		
4	4	PINS	2		
1	1	HOUSING	1		
474665-E 364175-E 454466-E			REV	DESCRIPTION	ITEM NO.
-			REV OF EACH ASSY NO. (WHEN BLANK, USE DWG. REV)		
QTY			PARTS LIST		

V-TURNED CONTACT (PCB SIDE CAN BE USED WITH POTTED COMPOUND)

INSPECTION LEVEL 1: CONTROL CHART REQUIRED
① PROOF OF PROCESS CAPABILITY OR 100% TEST IF PROCESS CAPABILITY IS NOT ACHIEVED

INSPECTION LEVEL 2 AND 3: CONTROL CHART REQUIRED
② PROOF OF MEAN VALUE, STANDARD DEVIATION AND MACHINE CAPABILITY

③ PROOF OF VALUES OR PROOF OF ATTRIBUTIVE TEST

INFORMATION ON THE SCOPE OF TESTING AND DETECTION BY ERNI VA 7.3.2.3

1. DRAWING SPECIFICATION ACCORDING TO DOCUMENT 5_3_16-DOC-1806-00915

2. COPLANARITY OF ALL CLIPS ≤ 0,1MM

THIS DRAWING IS A CONTROLLED DOCUMENT.		DWN B S ADRUSH 11AUG2023			
DIMENSIONS: mm		CHK M SZELAG 13AUG2023			
TOLERANCES UNLESS OTHERWISE SPECIFIED: ISO 2768-mK ISO 8015		APVD J DE BRUIJN 13AUG2023	NAME M12 FEMALE, D CODE, 4P, 17MM SMT V		
0 PLC ±		PRODUCT SPEC 108-94887	SIZE A2		
1 PLC ±		APPLICATION SPEC 114-94781	CAGE CODE 00779		
2 PLC ±		WEIGHT -	DRAWING NO C=454466-E		
3 PLC ±		CUSTOMER DRAWING	RESTRICTED TO -		
4 PLC ±		SCALE 5:1	SHEET 1 OF 1		
ANGLES ±			REV J2		
FINISH -					