



Part Number : [1731091906](#)

Product Description : FCT Standard-Density D-Sub Connector, Female, Right-Angle, PCB Through Hole, 11.10mm Tail Length, Gold over Nickel Phosphorus Plating, 500 Mating Cycles, Riveted Metal Bracket and Clinch Nut, 25 Circuits, White Insulator

Series Number : 173109

Status : Active

Product Category : D-Sub Connectors

Engineering Number : F25S5G1A-1002

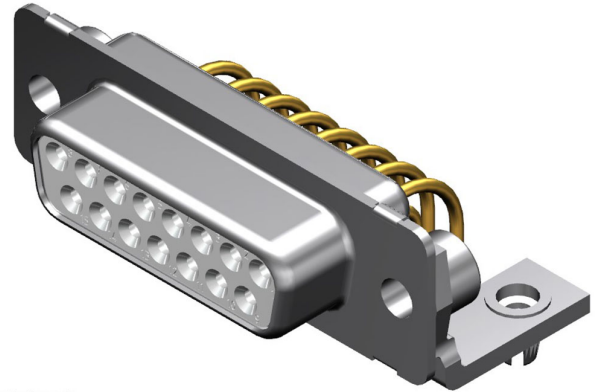


Illustration only.
The pole size may deviate from the image.

Documents & Resources

Drawings

[Drawing 1731091906_sd.pdf](#)

Product Environment Compliance

Compliance

GADSL/IMDS	Not Relevant
China RoHS	
EU ELV	Not Relevant
Low-Halogen Status	Not Reviewed per IEC 61249-2-21
REACH SVHC	Not Reviewed per D(2024)4144-DC (27 June 2024)
EU RoHS	Compliant with Exemption 6(c); 6(a) per EU 2015/863

Multiple Part Product Compliance Statements

- Eu RoHS
- REACH SVHC
- Low-Halogen

Multiple Part Industry Compliance Documents

- IPC 1752A Class C
- IPC 1752A Class D
- Molex Product Compliance Declaration
- IEC-62474

Part Details

General

Status	Active
Category	D-Sub Connectors
Series	173109
Description	FCT Standard-Density D-Sub Connector, Female, Right-Angle, PCB Through Hole, 11.10mm Tail Length, Gold over Nickel Phosphorus Plating, 500 Mating Cycles, Riveted Metal Bracket and Clinch Nut, 25 Circuits, White Insulator
IP Rating	IP20
Magnetic	Yes
Product Family	FCT D-Sub Connectors
Product Name	FCT Products
Type	Standard Density
UPC	191130143597

Electrical

Current - Maximum per Contact	7.5A
Shielded	Yes

Physical

Circuits (Loaded)	25
Circuits (maximum)	25
Color - Resin	White
Durability (mating cycles max)	500
Gender	Female
Material - Contact	Copper Alloy
Material - Resin	PBT
Material - Shell	Steel
Net Weight	17.900/g

Number of Rows	2
Orientation	Right-Angle
Packaging Type	Carton
Panel Mount	Rear
Panel Mount Method	Thread-In
PC Tail Length	11.10mm
PCB Locator	Yes
PCB Retention	Yes
PCB Thickness - Recommended	1.60mm
Pitch - Mating Interface	2.84mm
Pitch - Termination Interface	2.54mm
Plating - Contact	Gold over Nickel Phosphorus
Plating - Shell	Tin
Polarized to Mating Part	Yes
Polarized to PCB	Yes
Ports	1
Temperature Range - Operating	-55° to +125°C
Termination Style	Through Hole
Waterproof / Dustproof	No
Waterproof / Dustproof Type	IP20

Mates With / Use With

Mates with Part(s)

Description	Part Number
Mates With	FCT Standard-Density D-Sub, Size 3, 25 Position, Plug

This document was generated on Sep 26, 2024