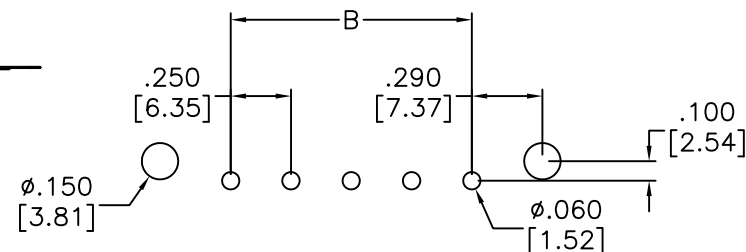
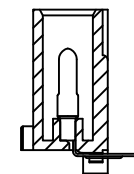
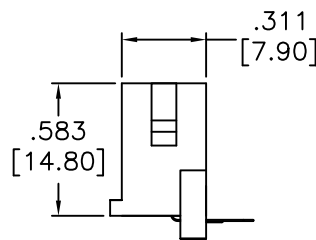
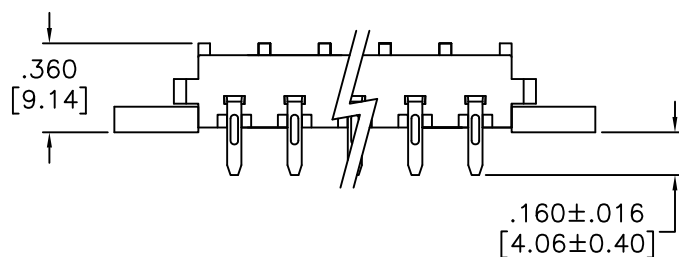
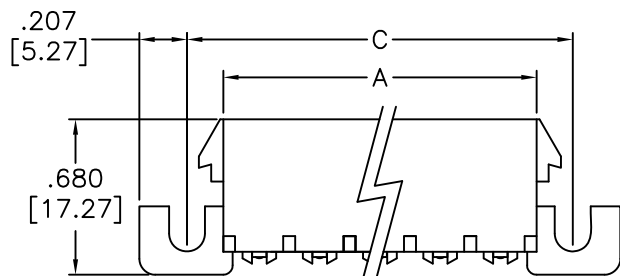
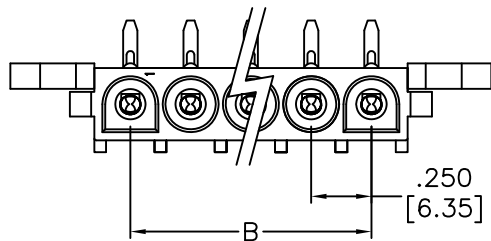


APPROVED: _____
 DATE: _____ TITLE: _____

Rev	AWO #	Description	Date	Appr
-		RELEASED	10/26/10	
A		ADDED DIM.	10/27/17	AY/NC



RECOMMENDED PCB LAYOUT

SPECIFICATIONS:

Material:
 Insulator: Nylon 66, rated UL 94V-2
 Insulator color: White
 Contact: Phosphor Bronze, Tin plated
 Electrical:
 Voltage rating: 600 VAC
 Current rating: 13 Amp (2~4P), 11 Amp (6~10P).
 Dielectric withstanding voltage: 5000 VAC for 1 minute
 Temperature Rating:
 -55°C to +105°C
 Environmental:
 Lead free, RoHS compliant.



Positions: 2 thru 10
 A = .250 [6.35] No. of Positions + .050 [1.27]
 B = .250 [6.35] No. of Spaces
 C = .250 [6.35] No. of Positions + .330 [8.38]

UNLESS OTHERWISE SPECIFIED ALL DIMENSIONS ARE INCHES [MM] TOLERANCES: EXCEPT AS NOTED		ADAM TECH 909 Rahway Avenue, Union, NJ 07083 Phone: 908-687-5000 Fax: 908-687-5710	
INCHES		TITLE WIRE TO BOARD HEADER, MALE WITH EARS 6.35MM, RIGHT ANGLE	
HOLES		SIZE X	
.X ± .10	Ø.X ± .10	PART NO. DME-M-XX-R/A-E	
.XX ± .020	Ø.XX ± .015	REV. -	
.XXX ± .015	Ø.XXX ± .010	REF: S00123T	
APPROVALS		SCALE: NTS	
DRAWN	DY	SHEET 1 OF 1	
CHECKED			
APPROVED			