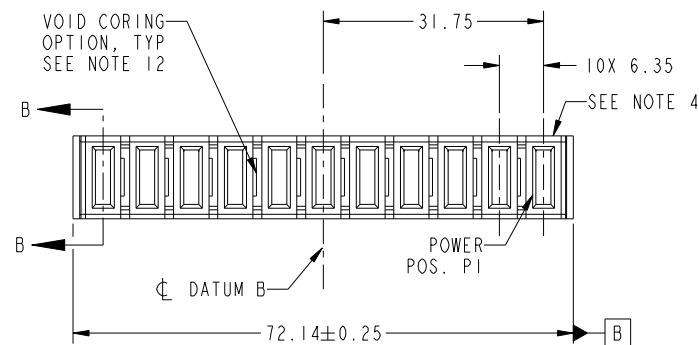


Tous droits strictement reserves. Reproduction ou communication a des tiers interdite sous quelque forme que ce soit sans autorisation écrite du propriétaire. Propriete de c FCI. Droits de reproduction FCI.



All rights strictly reserved. Reproduction or issue to third parties in any form whatever is not permitted without written authority from the proprietor. Property of FCI. Copyright FCI.

PRODUCT NO.	POWER										
	P11	P10	P9	P8	P7	P6	P5	P4	P3	P2	P1
51940-326-- NOTE: 3	PC	PC	PC	PC	X	X	X	PC	PC	PC	PC



CODE	DIM "M" MATING LENGTH	CONTACT TYPE
PC	[1.07]	POWER
X	OMITTED	OMITTED

mat'l code				SEE NOTES		tolerances unless otherwise specified		CUSTOMER		FCI	
litr	ecn no.	dr	date			linear	0.X ± 0.5	COPY		www.fciconnect.com	
A	DG11-0040	X0	02/16/11				0.XX ± 0.25	projection		title	
						angles	0.XXX ± 0.1			IIP	
						dr	0° ± 2°			VERTICAL PRESS-FIT RECEPT	
						enr	X0 Wang 02/16/11			product family	
						chr	Anson Liu 02/16/11			PwrBlade	
						appd	PM ZHENG 02/16/11			code	
							JOSEPH HSIA 02/16/11			213	
sheet index	revision sheet	A	A	A				scale		size	
		1	2	3				1:1		dwg no	
										A	
										51940-326	
										sheet	
										1 of 3	

cage code 22526

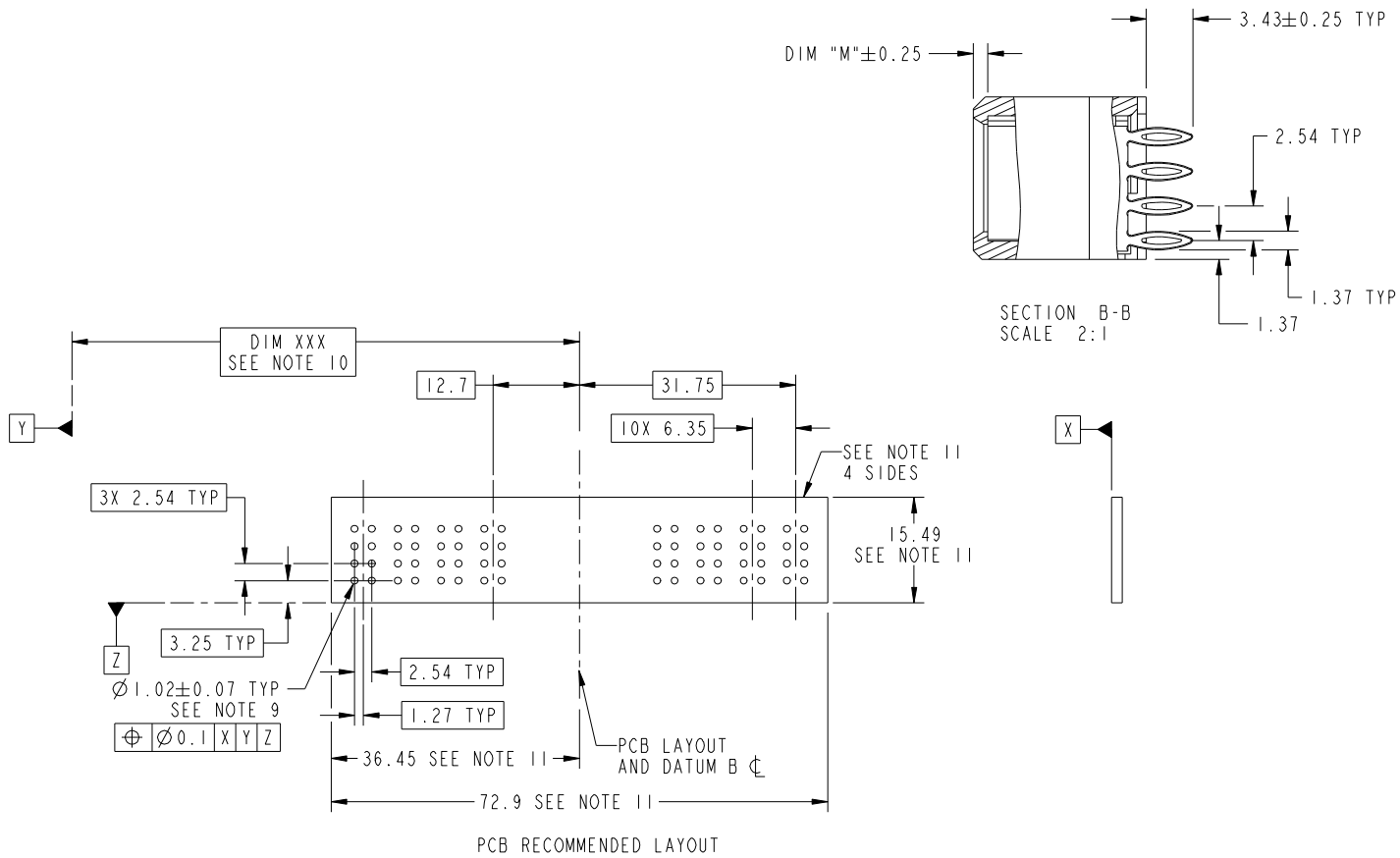
Pro/E

Tous droits strictement reserves. Reproduction ou communication a des tiers interdite sous quelque forme que ce soit sans autorisation écrite du propriétaire. Propriete de c FCI. Droits de reproduction FCI.



All rights strictly reserved. Reproduction or issue to third parties in any form whatever is not permitted without written authority from the proprietor. Property of FCI. Copyright FCI.

PRODUCT NUMBER
51940-326--
NOTE: 3



mat'l code				tolerances unless otherwise specified		CUSTOMER		FCI	
litr	ecn no.	dr	date	linear	0.X ±0.5	COPY		www.fciconnect.com	
A					0.XX ±0.25	projection		title IIP	
				angles	0.XXX ±0.1			VERTICAL PRESS-FIT RECEPT	
				dr	0° ±2°			product family PwrBlade	
				engr	XQ Wang 02/16/11	MIM		code 213	
				chr	Anson Liu 02/16/11	scale		size dwg no	
				appd	PM ZHENG 02/16/11	1:1		A 51940-326	
					JOSEPH HSIA 02/16/11			sheet 2 of 3	
sheet index	revision sheet							cage code 22526	

Tous droits strictement reserves. Reproduction ou communication a des tiers interdite sous quelque forme que ce soit sans autorisation écrite du propriétaire. Propriete de c FCI. Droits de reproduction FCI.



All rights strictly reserved. Reproduction or issue to third parties in any form whatever is not permitted without written authority from the proprietor. Property of FCI. Copyright FCI.

PRODUCT NUMBER
51940-326-- NOTE: 3

NOTES:

1. DIMENSIONS AND TOLERANCES ARE IN ACCORDANCE WITH
ASME Y14.5M, 1994 UNLESS OTHERWISE SPECIFIED.

CONNECTOR NOTES:

2 HOUSING MATERIAL: UL 94 V-0 GLASS FILLED HIGH-TEMP THERMOPLASTIC

POWER CONTACT MATERIAL: COPPER ALLOY

SIGNAL PIN MATERIAL: COPPER ALLOY

3. PLATING SPEC.

SEE ITEM 7 & 8 IN PRINT 10064183 FOR PLATING SPEC. OF 51940-326, 51940-326LF RESPECTIVELY.

4 MANUFACTURER'S NAME, DATE CODE AND OPTIONAL P/N TO APPEAR ON

THIS SURFACE. THE P/N CAN BE OMITTED IF THERE IS NOT ENOUGH
SPACE ON THIS SURFACE.

5. PRODUCT SPECIFICATION GS-12-149.

APPLICATION SPECIFICATION BUS-20-067.

6. PACKAGED IN TRAYS.

PCB NOTES:

7. ALL HOLE DIAMETERS ARE FINISHED HOLE SIZE.

8 MOUNTING HOLES, WHERE APPLICABLE, ARE UNPLATED.

9 $\varnothing 1.151 \pm 0.025$ DRILLED HOLES PLATED WITH

0.008 MIN SnPb OR Sn OVER 0.03

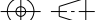
TO 0.08 Cu PLATING TO ACHIEVE

$\varnothing 1.02 \pm 0.07$ HOLE.

10 "DIM XXX" TO BE DETERMINED BY THE CUSTOMER.

11 CONNECTOR KEEP-OUT ZONE.

12. THE VOID CORING IN BETWEEN POWER MODULES, SIGNAL MODULES AND END MODULES ARE
OPTIONAL AND THE SHAPE MAY BE DIFFERENT FOR OPTIMIZE THE MOLDING PROCESS. THE VOID
CORING WILL NOT EFFECT TO PRODUCT FUNCTION.

mat'l code				tolerances unless otherwise specified				CUSTOMER		<div>FCI</div> <div>www.fciconnect.com</div>			
ltr	ecn no.	dr	date	linear	0.X ± 0.5		COPY		<div>projection</div> <div></div> <div>MM</div> <div>scale 1:1</div>	title			
A					0.XX ± 0.25		IIP						
				angles	0.XXX ± 0.1		VERTICAL PRESS-FIT RECEPT						
					0° ± 2°								
				dr	XQ Wang	02/16/11	product family			PwrBlade		code	
				engr	Anson Liu	02/16/11	size			dwg no		213	
				chr	PM ZHENG	02/16/11	A			51940-326		sheet	
				appd	JOSEPH HSIA	02/16/11						3 of	
sheet index		revision sheet											

cage code 22526