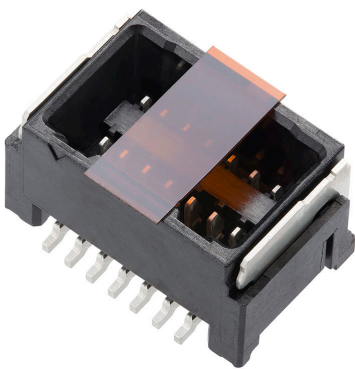




Part Number : [2077601081](#)
Product Description : 1.25mm Pitch, Micro-Lock Plus PCB Header with Potting Capability, Dual Row, Vertical, Surface Mount, Tin-Bismuth Plating, 10 Circuits, with Pick-and-Place Tape, Low-Halogen, Black
Series Number : 207760
Status : Active
Product Category : PCB Headers and Receptacles



Documents & Resources


Drawings
[2077601081_sd.pdf](#)

3D Models and Design Files
[2077601081.dxf](#)
[2077601081.pdf](#)
[2077601081_stp.zip](#)

Specifications
[5054320000-AS-000.pdf](#)
[2077609200-SPK-200.pdf](#)
[2045230001-PS-000.pdf](#)
[2045231001-PS-000.pdf](#)
[2145270001-PS-000.pdf](#)

Product Environment Compliance

Compliance

GADSL/IMDS	Compliant with Exemption 44; 33
China RoHS	
EU ELV	Not Relevant
Low-Halogen Status	Low-Halogen per IEC 61249-2-21
REACH SVHC	Not Contained per D(2024)6225-DC (07 Nov 2024)
EU RoHS	Compliant per EU 2015/863

[Multiple Part Product Compliance Statements](#)

- Eu RoHS
- REACH SVHC
- Low-Halogen

Multiple Part Industry Compliance Documents

- IPC 1752A Class C
- IPC 1752A Class D
- Molex Product Compliance Declaration
- IEC-62474
- chemSHERPA (xml)

EU RoHS Certificate of Compliance

Part Details

General

Status	Active
Category	PCB Headers and Receptacles
Series	207760
Description	1.25mm Pitch, Micro-Lock Plus PCB Header with Potting Capability, Dual Row, Vertical, Surface Mount, Tin-Bismuth Plating, 10 Circuits, with Pick-and-Place Tape, Low-Halogen, Black
Application	Signal, Wire-to-Board
Component Type	PCB Header
Product Name	Micro-Lock Plus
UPC	193264084944

Agency

UL	E29179
----	--------

Electrical

Current - Maximum per Contact	2.0A
Voltage - Maximum	50V AC (RMS)/DC

Physical

Breakaway	No
Circuits (Loaded)	10
Circuits (maximum)	10

Color - Resin	Black
Durability (mating cycles max)	30
First Mate / Last Break	No
Flammability	94V-1
Glow-Wire Capable	No
Guide to Mating Part	No
Keying to Mating Part	Yes
Lock to Mating Part	Yes
Material - Metal	Brass
Material - Plating Mating	Tin-Bismuth
Material - Plating Termination	Tin-Bismuth
Material - Resin	Polyamide
Net Weight	894.390/mg
Number of Rows	2
Orientation	Vertical
Packaging Type	Embossed Tape on Reel
PCB Locator	No
PCB Retention	Yes
Pitch - Mating Interface	1.25mm
Pitch - Termination Interface	1.25mm
Plating min - Mating	1.000µm
Plating min - Termination	1.000µm
Polarized to Mating Part	Yes
Polarized to PCB	Yes
Robotic Placement	Vacuum Pick-Up Tape
Shrouded	Fully
Stackable	No
Temperature Range - Operating	-40° to +105°C
Termination Interface Style	Surface Mount

Mates With / Use With

Mates with Part(s)

Description	Part Number
-------------	-------------

1.25mm Pitch Micro-Lock Plus Dual Row Receptacle Housings	<u>204523</u>
1.25mm Pitch Micro-Lock Plus TPA Type Dual Row Receptacle Housings	<u>214527</u>

This document was generated on Jan 14, 2025