



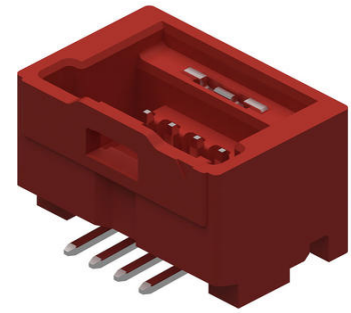
Part Number : [2016480022](#)

Product Description : Spot-On Wire-to-Board Header with Nail, 1.50mm Pitch, Single Row, Vertical, 2 Circuits, with Potting Capability, Matte Tin (Sn) Plating, Red

Series Number : 201648

Status : Obsolete

Product Category : PCB Headers and Receptacles



Documents and Resources

Drawings

[2016480022 sd.pdf](#)

3D Models and Design Files

[STEP AP242](#)

[SOLIDWORKS](#)

[Creo](#)

[Symbol and Footprint \(Multi-Format\)](#)

Specifications

[2016440000-A00.pdf](#)


[2016440000-A01.pdf](#)

[2016489200-200.pdf](#)

[2016470000-000.pdf](#)

Product Environment Compliance

Compliance

GADSL/IMDS	Not Relevant
China RoHS	 per SJ/T 11365-2006
EU ELV	Not Relevant
Low-Halogen Status	Not Low-Halogen per IEC 61249-2-21
REACH SVHC	Not Contained per D(2025)7771-DC (04 Feb 2026)

EU RoHS

Compliant per EU 2015/863

Compliance Statements

- EU RoHS
- REACH SVHC
- Low-Halogen

Industry Documents

- IPC 1752A Class C
- IPC 1752A Class D
- Molex Product Compliance Declaration
- IEC-62474
- chemSHERPA (xml)

Substances of Interest

- PFAS

EU RoHS Certificate of Compliance

Additional Product Compliance Information

Part Details

General

Status	Obsolete
Category	PCB Headers and Receptacles
Series	201648
Description	Spot-On Wire-to-Board Header with Nail, 1.50mm Pitch, Single Row, Vertical, 2 Circuits, with Potting Capability, Matte Tin (Sn) Plating, Red
Application	Signal, Wire-to-Board
Component Type	PCB Header
Keyword	Spot-On 1.5
Product Name	Spot-On
UPC	889056862103

Electrical

Current - Maximum per Contact	2.0A
Voltage - Maximum	100V AC (RMS)/DC

Physical

Breakaway	No
Circuits (Loaded)	2
Circuits (maximum)	2
Color - Resin	Red
Durability (mating cycles max)	30
First Mate / Last Break	No
Glow-Wire Capable	No
Guide to Mating Part	No
Keying to Mating Part	Yes
Lock to Mating Part	Yes
Material - Metal	Brass
Material - Plating Mating	Matte Tin
Material - Plating Termination	Matte Tin
Material - Resin	Polyamide
Net Weight	713.777/mg
Number of Rows	1
Orientation	Vertical
Packaging Type	Embossed Tape on Reel
PCB Locator	No
PCB Retention	Yes
Pitch - Mating Interface	1.50mm
Pitch - Termination Interface	1.50mm
Plating min - Mating	1.000µm
Plating min - Termination	1.000µm
Polarized to Mating Part	Yes
Polarized to PCB	Yes
Robotic Placement	Vacuum Pick-Up Area
Shrouded	Fully
Stackable	No
Temperature Range - Operating	-40° to +105°C
Termination Interface Style	Surface Mount

Mates With / Use With

Mates with Part(s)

Description	Part Number
1.50mm Pitch Spot-On Wire-to-Board Single Row Receptacle Housings	<u>201647</u>

This document was generated on Apr 12, 2026

Obsolete