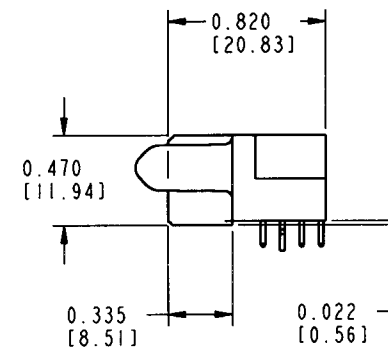
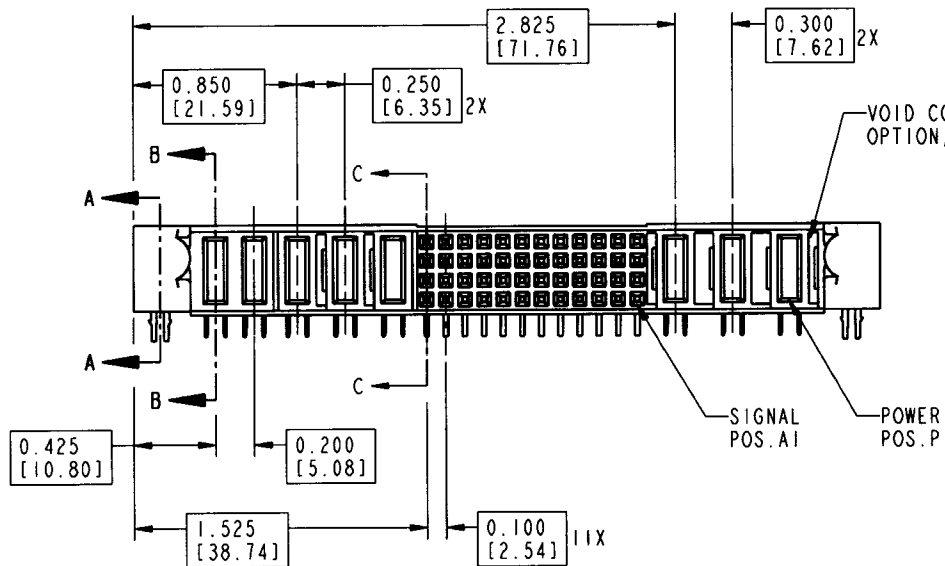
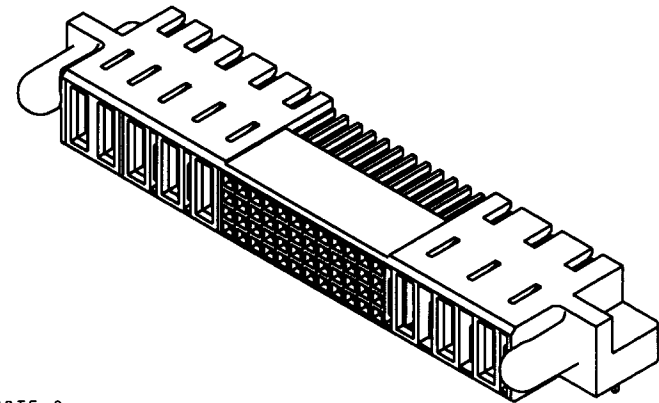
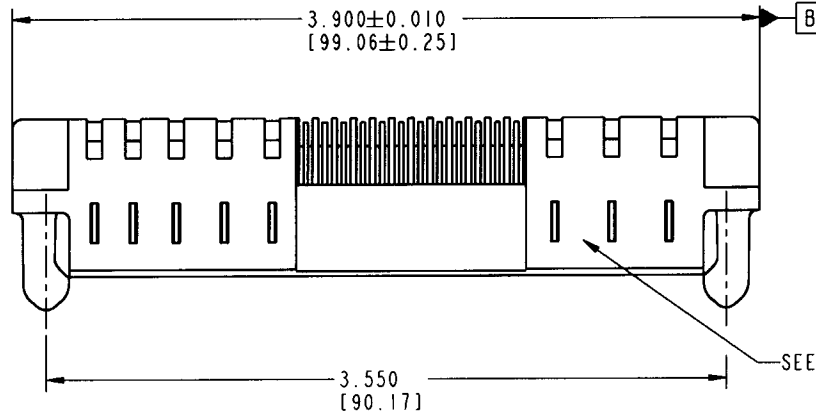


Tous droits strictement réservés. Reproduction ou communication à des tiers interdite sous quelque forme que ce soit sans autorisation écrite du propriétaire. Propriété de c FCI. Droits de reproduction FCI.

All rights strictly reserved. Reproduction or issue to third parties in any form whatever is not permitted without written authority from the proprietor. Property of FCI. Copyright FCI.



PRODUCT NUMBER
51785-001



mat'l code				NOTE 1		tolerances unless otherwise specified		CUSTOMER		FCI ELECTRONICS	
ltr	ecn no.	dr	date			.XX±.01/0.X±0.3		COPY		www.fciconnect.com	
A	V02393	JRW	10-27-00	linear		.XXX±.005/0.XX±0.13		projection		title	3ACP + 48S + 5P
						.XXX±.0020/.XXX±.051				product family	PWRBLADE
				angles		0°±2°		INCH/MM		size	dwg no
				dr	C. BAROT	05-07-00		scale	1:1	A	51785
				enr	J. BROWN	05-07-00					213
				chr	J. BROWN	05-07-00					sheet
				appd	J. BROWN	05-07-00					1 of 3
sheet index	revision	A	A	A	A	A					
	sheet	1	2	3							

Pro/E

cage code 22526

PDM: Rev:A

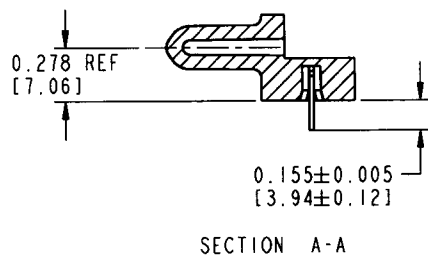
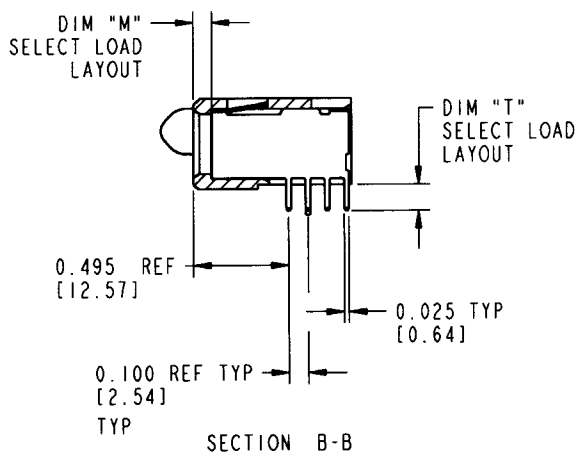
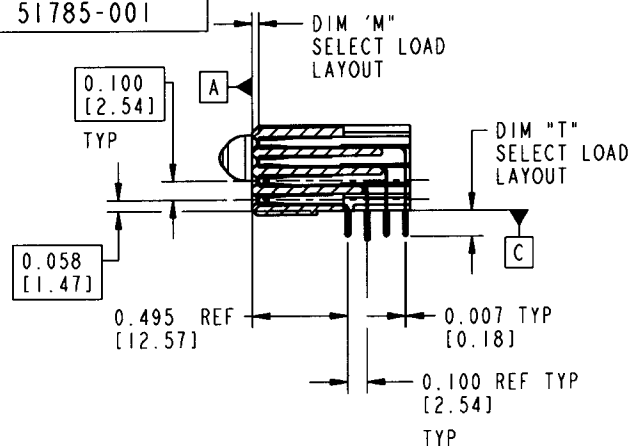
STATUS: Released

Printed: Oct 07, 2006



PRODUCT NUMBER

51785-001

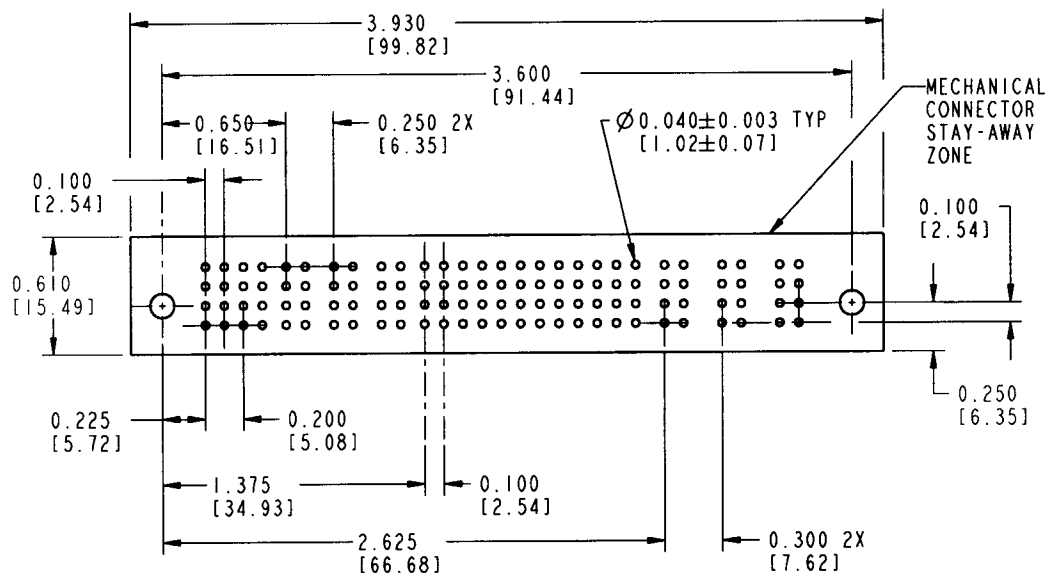


CONNECTORS - NOTES:

1. HOUSING MATERIAL: UL 94 V-0 GLASS FILLED HIGH TEMP THERMOPLASTIC
SIGNAL PIN MATERIAL: PHOS. BRONZE
POWER CONTACT MATERIAL: COPPER ALLOY
2. "MANUFACTURER'S" NAME, P/N, AND DATE CODE TO APPEAR ON THIS SURFACE
3. PRODUCT SPECIFICATION GS-12-149 PER GS-01-001.

PCB - NOTES

4. ALL DIMENSIONS ARE BASIC UNLESS OTHERWISE SPECIFIED.
5. ALL THROUGH HOLES ARE LOCATED WITH A TRUE POSITION OF .004
6. ALL HOLE DIAMETERS ARE FINISHED HOLE SIZE
7. Ø 0.098 THROUGH HOLES ARE UNPLATED
8. Ø .0453/1.151 DRILLED HOLES PLATED WITH .0003/.007 MIN SnPb OVER .001/1.03 to .003/.08 PLATING TO ACHIEVE A .080±.003/1.02±.08 HOLE



RECOMMENDED PCB LAYOUT

mat'l code				tolerances unless otherwise specified		CUSTOMER		ELECTRONICS	
litr	ecn no.	dr	date	linear	angles	COPY	projection	title	www.fciconnect.com
A				.XX±.01/.0.XX±0.3	0°±2°			3ACP + 48S + 5P	
				.XXX±.005/.0.XX±0.13				RIGHT ANGLE RECEPTACLE	
				.XXX±.0020/.XXX±.051					
				dr C. BAROT 05-07-00				product family PWRBLADE	code 213
				enr J. BROWN 05-07-00				size dwg no	sheet 2
				chr J. BROWN 05-07-00				A 51785	
				appd J. BROWN 05-07-00					
sheet index	revision sheet								

Pro/E

PDM: Rev:A

STATUS: Released

Printed: Oct 07, 2006



PRODUCT NUMBER
51785-001

ITEM NO.	QTY	DIM "M" MATING LENGTH ±.010	DIM "T" TAIL LENGTH ±.010	CONTACT TYPE	PLATING FOR MATING	PLATING FOR TAIL
E	12	N/A [N/A]	0.135 [3.43]	SIGNAL	30 u'' [.76um]Au	SnPb
F	12	N/A [N/A]	0.135 [3.43]	SIGNAL	30 u'' [.76um]Au	SnPb
G	12	N/A [N/A]	0.135 [3.43]	SIGNAL	30 u'' [.76um]Au	SnPb
H	12	N/A [N/A]	0.135 [3.43]	SIGNAL	30 u'' [.76um]Au	SnPb
PC	7	0.092 [2.34]	0.135 [3.90]	POWER	30 u'' [.76um]Au	SnPb
PA	1	0.042 [1.07]	0.135 [3.90]	POWER	30 u'' [.76um]Au	SnPb
HA	2	N/A [N/A]	N/A [N/A]	HOLD-DOWN	N/A [N/A]	SnPb

PRODUCT No.	ROWS	POWER						SIGNAL										POWER					
		E2	P8	P7	P6	P5	P4	12	11	10	9	8	7	6	5	4	3	2	1	P3	P2	P1	E1
51785-001	D C B A	HA	PC	PC	PC	PC	PC	H	H	H	H	H	H	H	H	H	H	H	H	PA	PC	PC	HA

mat'l code				tolerances unless otherwise specified				CUSTOMER		ELECTRONICS www.fciconnect.com		
lfr	ecn no.	dr	date	linear	.XX±.01/0.X±0.3			projection	COPY		title 3ACP + 48S + 5P RIGHT ANGLE RECEPTACLE	
A					.XXX±.005/0.XX±0.13							
					.XXX±.0020/.XXX±.051							
				angles	0°±2°				INCH/MM		product family PWRBLADE	
				dr	C. BAROT	05-07-00	scale		size A	dwg no 51785		
				engr	J. BROWN	05-07-00	1:1					
				chr	J. BROWN	05-07-00						
				appd	J. BROWN	05-07-00					code 213	
sheet index	revision	sheet									sheet 3	

Pro/E

cage code 22526

PDM: Rev:A

STATUS Released

Printed: Oct 07, 2006