

# AMPLIMITE Cable Connectors and Shielding Hardware Kits

## Quick Reference Guide

We offer one of the broadest, most versatile portfolios of D-subminiature connectors in the market with unrivaled engineering support to address our customer's needs. Our reliable AMPLIMITE cable connectors are available in a variety of plating types to satisfy different applications. These connectors are intermateable with any size 20 or 22 D-subminiature connector dimensionally complying with MIL-C-24308.

### Features & Benefits

- Lower cost, commercial version of the military approved series
- Available with shielding hardware and shielding enclosure kits
- Tin or zinc plated shells, with or without grounding indents

### Applications

- Industrial machinery
- Medical instrumentation
- Computers and peripherals
- RAID storage arrays
- File servers/routers
- Tape storage system
- Work stations
- On-machine industrial communications
- Personal and handheld devices

# AMPLIMITE Cable Connectors and Shielding Hardware Kits

## How to Select an AMPLIMITE Connector Part Number

The charts on the following pages highlight the AMPLIMITE part numbers with the key product attributes to help identify the correct part for your application. Each section also includes a list of materials to characterize the composition of each part.

## HDP-20 Crimp Snap-In Contact Connectors

							Plug Part Numbers			Receptacle Part Numbers	
Shell Size	# of Contact Positions	Dim. A	Dim. B	Dim. C	Insert Material	Mounting Method	Zinc Plated Shell	Tin Plated Shell		Zinc Plated Shell	Tin Plated Shell
								Without Ground Indents	With Grounding Indents		
1	9	1.213	.984	.494	94V-0	Standard	205204-9	205204-8	205204-4	205203-8	205203-3
						Clinch Nut	-	1658642-2	1658642-1	-	1658643-1
2	15	1.541	1.312	.494	94V-0	Standard	205206-9	205206-8	205206-3	205205-7	205205-2
						Clinch Nut	-	-	5745908-2	-	1658644-1
3	25	2.088	1.852	.494	94V-0	Standard	5205208-1	207464-7	207464-2	5205207-1	207463-1
						Clinch Nut	-	-	5745036-2	207516-6	207516-5
4	37	2.729	2.500	.494	94V-0	Standard	205210-8	205210-7	205210-3	205209-7	205209-2
						Clinch Nut	-	-	745135-4	-	5207661-3
5	50	2.635	2.406	.605	94V-0	Standard	1658641-3	1658641-1	1658641-2	1658640-2	1658640-1
						Clinch Nut	-	-	5745883-2	-	5745884-1

### Notes:

- Plugs accept size 20 DF pin contacts and receptacles accept size 20 DF socket contacts.
- All part numbers are RoHS compliant.



### Material and Finish

**Shell:** Steel, zinc or tin plated

**Insert:** 94V-0 rated thermoplastic, black

**Mounting Holes:**

**Standard:** .120 Dia

**Clinch nuts:** 4-40 threads with self-locking feature

## HDP-20 Basic Shielding Hardware Kits

### Notes:

- Plugs accept size 20 DF pin contacts and receptacles accept size 20 DF socket contacts.
  - Components of the kits are shipped unassembled and bulk-packaged in quantities of 100 pieces.
  - All part numbers are RoHS compliant.
- \*Maximum cable diameter after jacket and braid removed.

Shell Size	# of Contact Positions	Dim. D	Dim. E	Recommended Cable Outer Diameter Range	Max. Inner Cable Bundle diameter*	Mounting Method	Plug Kit Numbers	Receptacle Kit Numbers
1	9	.700	1.535	.165-.455	.350	Standard	1658645-1	1658646-1
						Clinch Nut	5748526-1	5748536-1
2	15	1.024	1.535	.165-.455	.350	Standard	1658647-1	5747539-1
						Clinch Nut	5750636-1	5787908-1
3	25	1.576	1.535	.165-.455	.350	Standard	1658648-1	1658649-1
						Clinch Nut	-	1658662-1
4	37	2.215	1.892	.338-.562	.450	Standard	1658650-1	1658651-1
						Clinch Nut	5786929-1	-
5	50	2.120	1.876	.338-.480	.450	Standard	1658652-1	1658653-1

### Material and Finish

**Connector Shells:** Steel, tin plated

**Connector Insert:** 94V-0 rated thermoplastic, black

**Shield:** Steel, tin plated



## HDP-20 Shielding Hardware Enclosure Kits

Shell Size	# of Contact Positions	Dim. D	Dim. E	Dim. F	Recommended Cable Outer Diameter Range	Max. Inner Cable Bundle diameter*	Insert Material	Kit Numbers		Shield Enclosure Expansion Tool	
								Plug	Receptacle	Cable O.D. (Max)	Part number
1	9	1.660	1.355	.630	.190-.330	.330	94V-0	1658655-1	1658654-1	.330	58241-4
2	15	1.660	1.685	.630	.190-.330	.330	94V-0	1658657-1	1658656-1		
3	25	1.660	2.210	.630	.217-.435	.350	94V-0	1658659-1	1658658-1	.450	58241-1
4	37	2.010	2.865	.730	.338-.562	.450	94V-0	5747958-1	1658660-1	.572	58241-2
5	50	2.010	2.775	.730	.338-.562	.450	94V-0	1658661-1	5747959-1		

### Material and Finish

**Connector Shells:** Steel, tin plated

**Connector Insert:** 94V-0 rated thermoplastic, black

**Shield:** Steel, tin plated

**Enclosure:** PVC, black

**Jackscrews:** Zinc alloy



### Notes:

- Plugs accept size 20 DF pin contacts and receptacles accept size 20 DF socket contacts.
  - Components of the kits are shipped unassembled and bulk-packaged in quantities of 100 pieces.
  - All part numbers are RoHS compliant.
- \*Maximum cable diameter after jacket and braid removed.

# AMPLIMITE Cable Connectors and Shielding Hardware Kits

## HDP-20 Ferrules for Shielding Hardware Kits

Shell Size	Style	L Dimension	Cable Diameter	Ferrule	Die Sets*
1-3	Stepped	.440	.165-.190	3-747579-0	543424-3
1-3	Stepped	.440	.190-.217	3-747579-0	543424-2
1-3	Stepped	.440	.217-.246	3-747579-0	543424-8
1-3	Stepped	.440	.246-.284	3-747579-2	-
1-3	Stepped	.440	.284-.324	3-747579-2	543424-7
1-3	Stepped	.440	.324-.375	3-747579-4	543424-6
1-3	Straight	.440	.375-.437	2-747579-7	543424-5
1-3	Straight	.440	.400-.460	3-747579-6	543424-4
4-5	Stepped	.625	.230-.265	2-747580-4	543425-2
4-5	Stepped	.625	.338-.385	2-747580-3	543425-1
4-5	Stepped	.625	.375-.432	2-747580-1	58238-1
4-5	Stepped	.625	.422-.490	3-747580-1	58237-2
4-5	Straight	.625	.480-.562	2-747580-2	58237-1

### Material and Finish

Steel (annealed), tin plated



Stepped



Straight

### Notes:

1. All part numbers RoHS compliant.

\*Die sets used with Hand Crimping Tool Part No. 543344-1 or Pneumatic Bench Tool Part No. 312522-3 equipped with Die Set Holder Part No. 58449-1.

## HDP-22 Crimp Snap-In Contact Connectors

Shell Size	No. of Contact Positions	Dim. A	Dim. B	Dim. C	With Grounding Indents	With Clinch Nuts	With Clinch Nuts	With Clinch Nuts
					Plug	Plug	Receptacle	Receptacle
1	15	1.213	.984	.494	748364-1	1658691-1	1658681-1	1658690-1
2	26	1.541	1.312	.494	1658671-1	5749717-1	1658682-1	5788816-1
3	44	2.088	1.852	.494	1658672-1	-	1658683-1	5786583-1
4	62	2.729	2.50	.494	1658673-1	6658293-1	1658684-1	-
5	78	2.635	2.406	.605	1658674-1	-	1658685-1	-

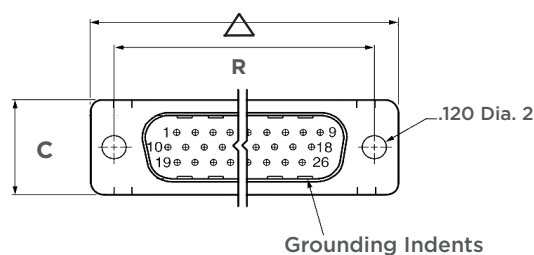
### Material and Finish

Pin: Brass

Socket: Phosphor bronze  
Plated:

A: duplex plated .000030 gold on mating end, with entire contact .000050 min. nickel underplated

B: duplex plated gold flash on mating end, with entire contact .000050 min. nickel underplated



## HDP-22 Crimp Snap-In Contact Connectors

Shell Size	No. of Contact Positions	Dim. C	Dim. D	Recommended Cable Outer Dia. Range	Max. Inner Cable Bundle Dia.*	Kit Number	
						Plug	Receptacle
1	15	1.535	.700	.165-.455	.350	1658675-1	5748634-1
2	26	1.535	1.024	.165-.455	.350	1658676-1	1658687-1
3	44	1.535	1.576	.165-.455	.350	1658677-1	5748636-1
4	62	1.892	2.215	.338-.562	.450	5748471-1	-
5	78	1.876	2.120	.338-.490	.450	5748472-1	-

### Material and Finish

Connector Shells:  
Steel, tin plated

Connector Insert: 94V-0 rated thermoplastic, black

Shield: Steel, tin plated



Receptacle



Plug

### Notes:

- Plugs accept size 22 DF pin contacts and receptacles accept size 22 DF socket contacts.
  - Components of the kits are shipped unassembled and bulk-packaged in quantities of 100 pieces.
  - All part numbers are RoHS compliant.
- \*Maximum cable diameter after jacket and braid removed.

# AMPLIMITE Cable Connectors and Shielding Hardware Kits

## HDP-22 Crimp Snap-In Contact Connectors

Shell Size	No. of Contact Positions	Dim. C	Dim. D	Dim. E	Recommended Cable Outer Dia. Range	Max. Inner Cable Bundle Dia.*	Kit Numbers		Shielding Enclosure Expansion Tool	
							Plug	Receptacle	Cable O.D. (Max)	Part Number
1	15	1.640	1.355	.630	.190-.330	.330	1658678-1	1658688-1	.330	58241-4
2	26	1.640	1.685	.630	.190-.330	.330	1658679-1	1658689-1		
3	44	1.640	2.205	.630	.217-.435	.350	1658680-1	5748641-1	.450	58241-1
4	62	2.010	2.860	.730	.338-.562	.450	5748476-1	578642-1	.572	58241-2
5	78	2.010	2.770	.730	.338-.490	.450	5748477-1	-		

### Material and Finish

**Connector Shells:** Steel, tin plated

**Connector Insert:** 94V-0 rated thermoplastic, black

**Shield:** Steel, tin plated

**Enclosure:** PVC, Black

**Jackscrews:** Zinc alloy



Plug



Receptacle

Shell Size	Style	L Dimension	Cable Diameter	Ferrule	Die Sets*
1-3	Stepped	.440	.165-.190	3-747579-0	543424-3
1-3	Stepped	.440	.190-.217	3-747579-0	543424-2
1-3	Stepped	.440	.217-.246	3-747579-0	543424-8
1-3	Stepped	.440	.246-.284	3-747579-2	543424-1
1-3	Stepped	.440	.284-.324	3-747579-2	543424-7
1-3	Stepped	.440	.324-.375	3-747579-4	543424-6
1-3	Straight	.440	.375-.437	-	543424-5
1-3	Straight	.440	.400-.460	3-747579-6	543424-4
4-5	Stepped	.625	.230-.265	2-747580-4	543425-2
4-5	Stepped	.625	.338-.385	2-747580-3	543425-1
4-5	Stepped	.625	.375-.432	2-747580-1	58238-1
4-5	Stepped	.625	.422-.490	2-747580-1	58237-2
4	Straight	.625	.480-.562	2-747580-2	58237-1

### Material and Finish

Steel (annealed), tin plated



Straight



Stepped

### Notes:

1. All part numbers are RoHS compliant.

\*Die sets used with Hand Crimping Tool Part No. 543344-1 or Pneumatic Bench Tool Part No. 312522-3 equipped with Die Set Holder Part 58449-1.

## HDE-20 All-Plastic IDC Connectors

### Plugs

Shell Size	No. of Contact Positions	Dim. A	Dim. B	Contact Finish (Plating Code)	Contact Identification No. 2 for 30-26 AWG Wire	Contact Identification No. 2 for 26-22 AWG Wire
					Plug	Plug
1	9	1.213	.984	A	-	745203-9
				B	-	1-745203-1
2	15	1.541	1.312	A	-	745207-7
3	25	2.090	1.852	A	745211-9	745211-7
				B	-	745211-8
4	37	2.732	2.500	A	-	745215-7

### Material and Finish

**Housing:** 94V-0 rated thermoplastic, black

**Contacts:** Phosphor bronze

**Contact Finish:** duplex plated

**A:** .000030 gold on mating end, tin on termination end, with entire contact nickel underplated

**B:** gold flash on mating end, tin on termination end, with entire contact nickel underplated

### Notes:

1. All connectors are preloaded with insulation displacement contacts. Pins in plug connectors and sockets in receptacle connectors. contacts accept a max. wire insulation thickness of .015 and a max. wire insulation diameter of .060.

2. HDE connectors are designed for terminating solid or stranded (7 strand max) wire.

3. Individual conductor strands should be larger than .005 inch diameter.

4. Extaction Tool Part No. 91232-1 (Instruction Sheet 408-6631) is used to remove pin or socket contacts.

5. All part numbers are RoHS compliant.



Plug

# AMPLIMITE Cable Connectors and Shielding Hardware Kits

## HDE-20 All-Plastic IDC Connectors

### Receptacles

Shell Size	No. of Contact Positions	Dim. A	Dim. B	Contact Identification No. 2 for 26-22 AWG Wire	
				Contact Finish (Plating Code)	Receptacle
1	9	1.213	.984	A	745201-7
				B	745201-9
2	15	1.541	1.312	A	745205-7
3	25	2.090	1.852	A	745209-7
				B	745209-8

#### Notes:

1. All connectors are preloaded with insulation displacement contacts. Pins in plug connectors and sockets in receptacle connectors. Contacts accept a max. wire insulation thickness of .015 and a max. wire insulation diameter of .060.
2. HDE connectors are designed for terminating solid or stranded (7 strand max) wire.
3. Individual conductor strands should be larger than .005 inch diameter.
4. Extraction Tool Part No. 91232-1 (Instruction Sheet 408-6631) is used to remove pin or socket contacts.
5. All part numbers are RoHS compliant.

### Material and Finish

**Housing:** 94V-0 rated thermoplastic, black

**Contacts:** Phosphor bronze

**Contact Finish:** duplex plated

**A:** .000030 gold on mating end, tin on termination end, with entire contact nickel underplated

**B:** gold flash on mating end, tin on termination end, with entire contact nickel underplated



Receptacle

## HDE-20 Metal-Shell IDC Connectors

### Material and Finish

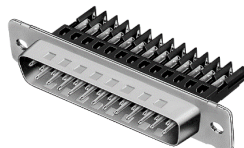
**Shell:** Steel, tin plated

**Insert:** 94V-0 rated thermoplastic, black

**Contacts:** duplex plated:

**A:** .000030 gold on mating end, tin on termination end, with entire contact nickel plated

**B:** Gold flash on mating end, tin on termination end, with entire contact nickel underplated.



Plug

### Plugs

Shell Size	No. of Contact Positions	Dim. A	Dim. B	Contact Finish (Plating Code)	Contact Identification No. 2 for 30-26 AWG Wire		Contact Identification No. 2 for 26-22 AWG Wire	
					Plug		Plug	Plug
1	9	1.213	.984	A	1-745492-7	1-745792-8	1-745492-9	
				B	-	2-745492-0	-	
2	15	1.541	1.312	A	1-745494-7	1-745494-5	-	
				B	-	1-745494-6	-	
3	25	2.088	1.852	A	1-745496-9	1-745496-7	2-745496-0	
				B	-	1-745496-8	-	
4	37	2.729	2.500	A	1-745498-6	1-745498-5	-	
				B	-	1-745498-7	-	

#### Notes:

1. All connectors are preloaded with insulation displacement contacts. Pins in plug connectors and sockets in receptacle connectors. Contacts accept a max. wire insulation thickness of .015 and a max. wire insulation diameter of .060.
2. Connectors can be made available with clinch nuts, contact TE Connectivity.
3. HDE connectors are designed for terminating solid or stranded (7 strand max.) wire.
4. Individual conductor strands should be larger than .005 inch diameter.
5. Extraction Tool Part No. 91232-1 (Instruction Sheet 408-6631) is used to remove pin or socket contacts.
6. All part numbers are RoHS compliant.

### Receptacles

Shell Size	No. of Contact Positions	Dim. A	Dim. B	Contact Finish (Plating Code)	Contact Identification No. 2 for 30-26 AWG Wire		Contact Identification No. 2 for 26-22 AWG Wire	
					Receptacle		Receptacle	Receptacle
1	9	1.213	.984	A	1-745491-6	1-745491-7	1-745491-9	
				B	-	1-745491-8	-	
2	15	1.541	1.312	A	1-745493-6	1-745493-4	-	
				B	-	1-745493-5	-	
3	25	2.088	1.852	A	1-745495-7	1-745495-8	1-745495-9	
				B	-	2-745495-0	-	
4	37	2.729	2.500	A	1-745497-6	1-745497-5	-	
				B	-	1-745497-7	-	

#### Notes:

1. All connectors are preloaded with insulation displacement contacts. Pins in plug connectors and sockets in receptacle connectors. Contacts accept a max. wire insulation thickness of .015 and a max. wire insulation diameter of .060.
2. Connectors can be made available with clinch nuts, contact TE Connectivity.
3. HDE connectors are designed for terminating solid or stranded (7 strand max.) wire.
4. Individual conductor strands should be larger than .005 inch diameter.
5. Extraction Tool Part No. 91232-1 (Instruction Sheet 408-6631) is used to remove pin or socket contacts.
6. All part numbers are RoHS compliant.



Receptacle

\* RS-232 size 3 connector, for 26-22 AWG wire select loaded circuits 1-8, 15, 17, 20 and 22, Plug Part No. 747740-1, Receptacle Part No. 747741-1, gold flash contacts

### Material and Finish

**Shell:** Steel, tin plated

**Insert:** 94V-0 rated thermoplastic, black

**Contacts:** Phosphor bronze

**Contact Finish:**

**A:** .000030 gold on mating end, tin on termination end, with entire contact nickel plated

**B:** Gold flash on mating end, tin on termination end, with entire contact nickel underplated

# AMPLITE Cable Connectors and Shielding Hardware Kits

## HDE-20 Basic Shielding Hardware Kits

### Plugs

Shell Size	No. of Contact Positions	Dim. C	Dim. D	Recommended Cable Outer Dia. Range	Max Inner Cable Bundle Diameter*	Contact Finish (Plating Code)	Contact I.D. No. 1 for 30-26 AWG Wire	Contact I.D. No. 2 for 26-22 AWG Wire
							Plug	Plug
1	9	1.520	.678	.165-.455	.350	A	-	7457515-7
2	15	1.520	1.002	.165-.455	.350	A	747531-7	747531-8
3	25	1.520	1.550	.165-.455	.350	A	747547-8	747531-9
						B	-	1-747547-0
4	37	1.520	2.205	.338-.562	.450	A	-	-
						B	-	1-747563-0



Plug

### Receptacles

Shell Size	No. of Contact Positions	Dim. C	Dim. D	Recommended Cable Outer Dia. Range	Max Inner Cable Bundle Diameter*	Contact Finish (Plating Code)	Contact I.D. No. 2 for 26-22 AWG Wire
							Receptacle
1	9	1.520	.678	.165-.455	.350	A	747516-7
						B	747516-9
2	15	1.520	1.002	.165-.455	.350	A	747532-7
						B	747532-8
3	25	1.520	1.550	.165-.455	.350	A	747548-8
						B	747548-9
4	37	1.867	1.867	.338-.562	.450	B	747564-9



Receptacle

### Material and Finish

**Connector Shell:** Steel, tin plated

**Connector Insert:** 94V-0 rated thermoplastic, black

**Shield:** Steel, tin plated

**Contacts:** Phosphor bronze

**Contact Finish:** Duplex plated

**A:** .000030 gold on mating end, tin on termination end, with entire contact nickel underplated

**B:** Gold flash on mating end, tin on termination end, with entire contact nickel underplated

### Notes:

1. Components of the kits are shipped unassembled and bulk packaged in quantities of 100 pieces.

2. All part numbers are RoHS compliant.

\*Maximum cable diameter after jacket and braid removed.

## HDE-20 Shielding Hardware Enclosure Kits

### Plugs

Shell Size	No. of Contact Positions	Dim. C	Dim. D	E	Recommended Cable Outer Dia. Range	Max Inner Cable Bundle Diameter*	Contact Finish (Plating Code)	Contact I.D. No. 1 for 30-26 AWG Wire	Contact I.D. No. 2 for 26-22 AWG Wire	Shielding Enclosure Expansion Tool	Part No.
								Plug	Plug	Cable O.D. (Max.)	
1	9	1.640	1.355	.630	.190-.330	.330	A	-	1-747944-5	.330	58241-4
							B	-	1-747944-6		
2	15	1.640	1.685	.630	.190-.330	.330	A	-	1-747946-5	.450	58241-1
							B	-	1-747946-6		
3	25	1.640	2.210	.630	.217-.435	.350	A	1-747948-5	1-747948-	.572	58241-2
							B	-	1-747948-8		
4	37	2.010	2.865	.730	.338-.562	.450	A	1-747950-4	1-747950-5	.572	58241-2
							B	-	1-747950-6		

### Material and Finish

**Connector Shell:** Steel, tin plated

**Connector Insert:** 94V-0 rated thermoplastic, black

**Shield:** Steel, tin plated

**Enclosure:** PVC, black

**Jack screws:** Zinc alloy

**Contacts:** Phosphor bronze

**Contact Finish:** Duplex plated

**A:** .000030 gold on mating end, tin on termination end, with entire contact nickel underplated

**B:** Gold flash on mating end, tin on termination end, with entire contact nickel underplated

### Notes:

1. All part numbers are RoHS compliant.

\*Maximum cable diameter after jacket and braid removed



# AMPLITE Cable Connectors and Shielding Hardware Kits

## HDE-20 Shielding Hardware Enclosure Kits

### Receptacles

Shell Size	No. of Contact Positions	Dim. C	Dim. D	Dim. E	Recommended Cable Outer Dia. Range	Max Inner Cable Bundle Diameter*	Contact Finish (Plating Code)	Contact I.D. No. 1 for 30-26 AWG Wire	Contact I.D. No. 2 for 26-22 AWG Wire	Shielding Enclosure Expansion Tool	
								Receptacle	Receptacle	Cable O.D. (Max.)	Part No.
1	9	1.640	1.355	.630	.190-.330	.330	A	1-747943-5	1-747943-6	.330	58241-4
							B	-	1-747943-7		
2	15	1.640	1.685	.630	.190-.330	.330	A	1-747945-5	-	.330	58241-4
							B	-	-		
3	25	1.640	2.210	.630	.217-.435	.350	A	1-747947-5	1-747947-6	.450	58241-1
							B	-	1-747947-7		

### Material and Finish

**Connector Shell:** Steel, tin plated

**Connector Insert:** 94V-0 rated thermoplastic, black

**Shield:** Steel, tin plated

**Enclosure:** PVC, black

**Jack screws:** Zinc alloy

**Contacts:** Phosphor bronze

**Contact Finish:** Duplex plated

**A:** .000030 gold on mating end, tin on termination end, with entire contact nickel underplated

**B:** Gold flash on mating end, tin on termination end, with entire contact nickel underplated

### Notes:

1. All part numbers are RoHS compliant.

\*Maximum cable diameter after jacket and braid removed

## Subminiature D Connectors HDF-20 for Flat Ribbon Cable

No. of Pos. & Shell Size	Cable Stabilizer Part No.	Plug		Receptacle	
		With Standard Mounting Holes	With 4-40 Threaded Inserts	With Standard Mounting Holes	With 4-40 Threaded Inserts
9(1)	747275-4	1658613-4	1658608-4	1658612-4	1658610-4
15(2)	747275-3	1658613-3	1658608-3	1658612-3	1658610-3
25(3)	747275-2	1658613-2	1658608-2	1658612-2	1658610-2
37(4)	747275-1	1658613-1	1658608-1	1658612-1	1658610-1
50(5)	-	-	1658607-1	-	1658606-1

### Notes:

1. All assemblies are supplied with housing and cover pre-assembled. Optional cable stabilizer must be ordered separately.

2. All part numbers are RoHS compliant.



Plug- Low Profile Metal Shell



Receptacle- Low Profile Metal Shell

### Material and Finish

**Front Shell:** Steel, tin or tin plated

**Housing, Cover & Cable Stabilizer:** Thermoplastic, 94V-0, black

**Threaded Inserts:** Brass, unplated

**Contacts:** Phosphor bronze, duplex plated .000030 min. gold on mating end, .000100-.000200 bright tin on termination end with entire contact underplated .000050 min. nickel

## HDF-20 Low Profile All-Plastic Connectors (for Round Conductor Flat Ribbon Cable)

No. of Pos. & Shell Size	Cable Stabilizer Part No.	Plug Assembly		Receptacle Assembly	
		With Standard Mounting Holes	With 4-40 Threaded Inserts	With Standard Mounting Holes	With 4-40 Threaded Inserts
9(1)	747275-4	1658615-4	1658611-4	1658614-4	1658609-4
15(2)	747275-3	1658615-3	1658611-3	1658614-3	1658609-3
25(3)	747275-2	1658615-2	1658611-2	1658614-2	1658609-2
37(4)	747275-1	1658615-1	-	1658614-1	1658609-1

### Notes:

1. All part numbers are RoHS compliant.

# AMPLIMITE Cable Connectors and Shielding Hardware Kits

## HDF-20 Low Profile All-Plastic Connectors (for Round Conductor Flat Ribbon Cable)

### Ribbon Cable Parameters

No. of Conductors	28 AWG Part No.		26 AWG Part No.
	100 ft.	500 ft.	500 ft.
9	1-57040-2	1-971111-2	57034-2
15	1-57040-5	1-971111-5	57034-5
25	57040-2	971111-2	57034-9
37	1-57040-8	1-971111-8	1-57034-3
50	57040-6	971111-6	1-57034-5

### Material and Finish

**Housing, Cover & Cable Stabilizer:**  
Thermoplastic, 94V-0, black

**Threaded Inserts:** Brass, unplated

**Pin Contacts:** Phosphor bronze, duplex plated  
.000030 min. gold on mating end, .000100-  
.000200 bright tin on termination end with  
entire contact underplated .000050 min. nickel



Plug Assemblies

Housing and covers are Preassembled;  
Cable Stabilizer is Separate



Receptacle Assemblies

Housing and covers are Preassembled;  
Cable Stabilizer is Separate

## HD-20 Solder Cup Connectors

Shell Size	No. of Contact Positions	Dim. A	Dim. B	Plug		Receptacle	
				Tin Plated Shell	Zinc Plated Shell	Tin Plated Shell	Zinc Plated Shell
1	9	1.210	.984	5-747904-2	5-747904-2	5-747905-2	5-747905-2
2	15	1.544	1.313	5-747908-2	5-747908-2	5-747909-2	5-747909-2
3	25	2.089	1.853	5-747912-2	5-747912-2	5-747913-2	5-747913-2
4	37	2.734	2.502	5-747916-2	5-747916-2	5-747917-2	-

### Material and Finish

**Shell:** Steel, tin or zinc plated

**Insert:** 94V-0 rated thermoplastic, black

**Contacts:** Phosphor bronze; duplex plated with gold flash on mating end, tin on solder cup, with entire contact nickel underplated

### Notes:

1. All part numbers are RoHS compliant.

## HD-20 Solder Cup Shielding Hardware Enclosure Kits

Shell Size	No. of Contact Positions	Dim. C	Dim. D	Dim. E	Cable Insulation Diameter	Receptacle	Shielding Enclosure Expansion Tool	
							Cable O.D. (Max.)	Part Number
3	25	1.640	2.200	.659	.270-.324	1574656-5	.465	58241-1
						1571656-6		
					.324-.385	1571656-6		

### Material and Finish

**Connector Shell:** Steel, tin plated

**Connector Insert:** 94V-0 rated thermoplastic, black

**Shield:** Steel, tin plated

**Enclosure:** PVC, black

**Jackscrews:** Brass, zinc coated

**Contacts:** Phosphor bronze; duplex plated with gold flash on mating end, tin on solder cup, with entire contact underplated.

### Notes:

1. Components of the kits are shipped unassembled and bulk-packaged in quantities of 100 pieces.  
2. All part numbers are RoHS compliant.



## AMPLIMITE Cable Connectors and Shielding Hardware Kits

### Resources:

Product Specification s	Application Specifications	Instruction Sheets		
108-40005 108-40011	114-10000	408-9381	408-9172	408-9243
108-40030 108-40012	114-40030	408-9010	408-91913	408-9242
108-1268	114-10001	408-6621	408-9507	
	114-1001	408-6645	408-9508	
	114-40002			
	114-40003			
	114-40006			
	114-4008			
	108-40031			

### TE Technical Support Center

USA:	1.800.522.6752
Canada:	1.905.475.6222
Mexico:	52.0.55.1106.0800
Latin/S. America:	54.0.11.4733.2200
Germany:	49.0.6251.133.1999
UK:	44.0.800.267666
France:	33.0.1.3420.8686
Netherlands:	31.0.73.6246.999
China:	86.0.400.820.6015

### te.com

AMP, AMPLIMITE, TE Connectivity, TE Connectivity (logo) and EVERY CONNECTION COUNTS are trademarks of the TE Connectivity Ltd. family of companies.

All other logos, products and/or company names referred to herein might be trademarks of their respective owners.

The information given herein, including drawings, illustrations and schematics which are intended for illustration purposes only, is believed to be reliable. However, TE Connectivity makes no warranties as to its accuracy or completeness and disclaims any liability in connection with its use. TE Connectivity's obligations shall only be as set forth in TE Connectivity's Standard Terms and Conditions of Sale for this product and in no case will TE Connectivity be liable for any incidental, indirect or consequential damages arising out of the sale, resale, use or misuse of the product. Users of TE Connectivity products should make their own evaluation to determine the suitability of each such product for the specific application.

© 2018 TE Connectivity Ltd. family of companies All Rights Reserved.

1-1773963-5 10/18