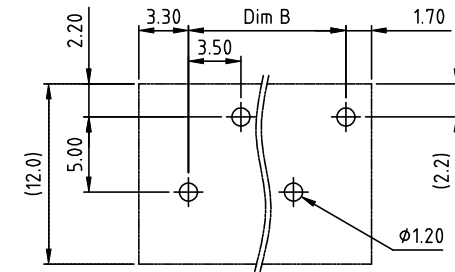
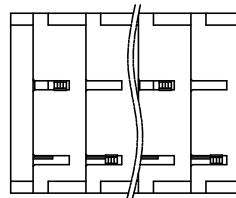
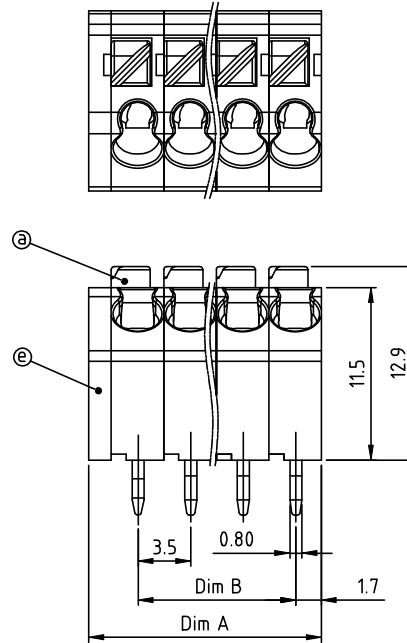
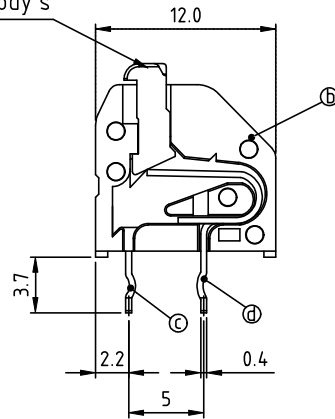


PRODUCT NUMBER	PITCH
HCxx00x000J0G	3.50mm

The color of lever is consistent with body's



RECOMMENDED P.C.B LAYOUT  
TOP VIEW

Material:

- Item①Insulator(lever):Thermoplastic (UL94V-0)
- Item②Insulator(housing):Thermoplastic (UL94V-0)
- Item③Side contact pin: PhBz (C5210 SH), Tin plated.
- Item④Center contact pin: PhBz (C5210 SH), Tin plated.
- Item⑤Side Cover: Thermoplastic (UL94V-0)

Electrical:	cULus	VDE	CQC	TUV
● Voltage rating:	300V	130V	300V	500V
● Current rating:	6A	6A	6A	8A
● Wire range:	0.5-0.75 mm²		0.5-1.5 mm²	
● Solid wire(AWG):	16-22		20	
● Stranded wire(AWG):	16-22		20	
● Wire strip length:	8.5-10.0mm			
● Withstanding Voltage:	1.6KV	1.25KV	2.5 KV	4KV
● Operating temperature:	-40°C to +115°C			
● Soldering temperature:	260°C ±5°C/5 Sec			
● Safety Approval:	UL	VDE	CQC	TUV

N=Number of poles  
Dim A=N×3.5+1.5  
Dim B=(N-1)×3.5

Poles	Tolerance
2p/4p/6p	±0.10
8p/10p/12p	±0.15
14p/16p/18p	±0.20
20p/22p/24p	±0.30

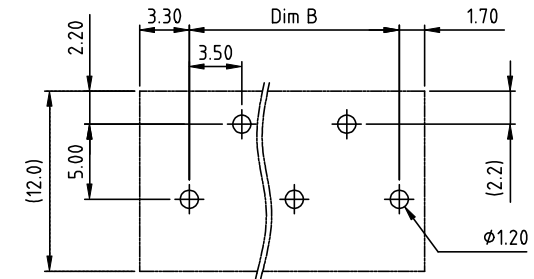
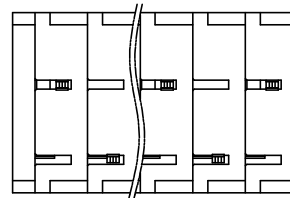
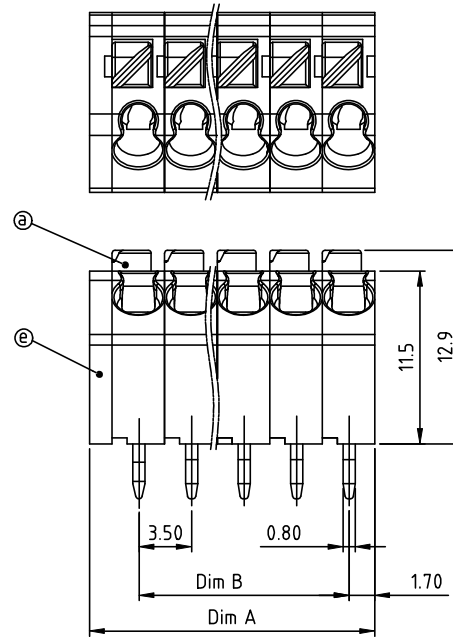
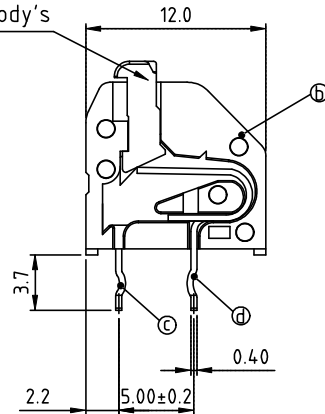
PART NO.: HC xx 00 x 000J0 G

No. of poles	Body Color	RoHS compliant
02 2 poles	Black (RAL9005)	(lead<4%) In copper Alloy
04 4 poles	Red (RAL3001/D)	
...	Orange(RAL2011/P)	
...	Yellow(RAL1018/A)	
...	Green(RAL6018/T)	
24 24 poles	Blue (RAL5015/A)	
	8 Grey(RAL7004/P)	
	9 White(RAL1102)	
	C Multiple colors	

mat'l. code				surface	tolerance	projection	product family	
				ASME Y14.5	ASME Y14.5		TERMINAL BLOCK	
ltr	ecn no	dr	date	tolerances unless otherwise specified			title	
				angles	X.±0.5		TERMINAL BLOCK	
				linear	X.X±0.3		SPRING CLAMP,4SD WIRE INLET,WITH LEVER,EVEN POLES	
				X'±1"	X.XX±0.1		scale	
				dr	EVIN ZHONG 052314		dwg no	
				enr	EVIN ZHONG 052314		sheet 1 of 2 size	
				chr	HANKE FENG 052314		HCxx00x000J0G	
				appd	SHI JUN 052314		type	
sheet index				revision	A		CUSTOMER Drawing	
				sheet	1			

PRODUCT NUMBER	PITCH
HCxx00x000J0G	3.50mm

The color of lever is consistent with body's



RECOMMENDED P.C.B LAYOUT  
TOP VIEW

Material:

- Item①Insulator(lever):Thermoplastic (UL94V-0)
- Item②Insulator(housing):Thermoplastic (UL94V-0)
- Item③Side contact pin: PhBz (C5210 SH), Tin plated.
- Item④Center contact pin: PhBz (C5210 SH), Tin plated.
- Item⑤Side Cover: Thermoplastic (UL94V-0)

Electrical:	cULus	VDE	CQC	TUV
● Voltage rating:	300V	130V	300V	500V
● Current rating:	6A	6A	6A	8A
● Wire range:	0.5-0.75 mm <sup>2</sup>		0.5-1.5 mm <sup>2</sup>	
● Solid wire(AWG):	16-22		20	
● Stranded wire(AWG):	16-22		20	
● Wire strip length:	8.5-10.0mm			
● Withstanding Voltage:	1.6KV	1.25KV	2.5 KV	4KV
● Operating temperature:	-40°C to +115°C			
● Soldering temperature:	260°C ±5°C/5 Sec			
● Safety Approval:	UL	VDE	CQC	TUV

N=Number of poles  
Dim A=N×3.5+1.5  
Dim B=(N-1)×3.5

Poles	Tolerance
3p/5p	±0.10
7p/9p/11p	±0.15
13p/15p/17p	±0.20
19p/21p/23p	±0.30

PART NO.: HC xx 00 x 000J0 G

No. of poles	Body Color	RoHS compliant
0	Black (RAL9005)	(lead<4%)
End Stackable	2 Red (RAL3001/D)	In copper Alloy
03 3 poles	3 Orange(RAL2011/P)	
05 5 poles	4 Yellow(RAL1018/A)	
... ..	5 Green(RAL6018/T)	
23 23 poles	6 Blue (RAL5015/A)	
	8 Grey(RAL7004/P)	
	9 White(RAL1102)	
	C Multiple colors	

mat'l. code				surface	tolerance	projection	product family	
				ASME Y14.5	ASME Y14.5		TERMINAL BLOCK	
ltr	ecn no	dr	date	tolerances unless otherwise specified			title	
				angles	X.±0.5		TERMINAL BLOCK	
				in	X.X±0.3		SPRING CLAMP,45D WIRE INLET,WITH LEVER,ODD POLES	
				X'±1"	X.XX±0.1		scale	
				dr	EVIN ZHONG 052314		dwg no	
				enr	EVIN ZHONG 052314		sheet 2 of 2 size	
				chr	HANKE FENG 052314		HCxx00x000J0G	
				appd	SHI JUN 052314		type	
sheet index				revision	A		CUSTOMER Drawing	
				sheet	2			