

NOTES:

1. THIS BOXMOUNT RECEPTACLE MATES WITH A MTC PLUG CONTAINING SOCKET INSERTS. REFER TO APPLICABLE RAYCHEM SPECIFICATION CONTROL DRAWING FOR DETAILS.

FOR KEYING INFORMATION, SEE RAYCHEM DRAWING D-659-0080.

THESE ITEMS ARE SUPPLIED UNASSEMBLED.

DIMENSION SHOWN IS WITH MATED PLUG CONNECTOR: a. WITH CABLE CLAMP
b. WITHOUT CABLE CLAMP AND WITHOUT EARS

THE BOXMOUNT RECEPTACLE IS REAR PANEL MOUNTED BY REMOVING AS MANY PANEL WASHERS AS REQUIRED TO ACCOMMODATE THE THICKNESS OF THE PANEL BEING USED. SEE SHEET 3, TABLE 3.

.025 WIRE WRAPPABLE POST DESIGNED TO MIL-STD-1130.

PART NUMBER VARIABLE: (SEE SHEET 2 FOR ADDITIONAL INFORMATION)

MTC50-BXX-PXX-XXX-XXX

PRE-PRODUCTION LEVEL (SEE TABLE 4) (BLANK WHEN NOT APPLICABLE)

MODIFICATION NUMBER. REFER TO APPLICABLE MOD DESCRIPTION SHEET. ('BLANK WHEN NOT APPLICABLE')

1 = LONG TAIL
2 = SHORT TAIL
3 = 90° BEND "B" DIRECTION

2=NICKEL PLATE
3=CADMIUM OVER NICKEL PLATE

1=1 INCH
2=2 INCH

F = FLANGED WITH STANDARD PANEL GASKET
J = FLANGELESS

S = FLANGED/SHIELDED WITH EME PANEL GASKET

Y = SPECIALS: REFER TO INDIVIDUAL SPECIFICATION CONTROL DRAWINGS FOR DESCRIPTIONS

SEE SHEET 3, TABLE 2, FOR WEIGHTS. WEIGHTS SHOWN ARE WITHOUT DUST CAP AND WITHOUT POST PROTECTOR.

CAP SCREW INSTALLATION TORQUE 14-16 INCH POUNDS.

DUST CAP SUPPLIED WITH EACH RECEPTACLE HOUSING.

ONE INCH TERMINATION POST NUMBERING IS SHOWN ON SHEET ONE FOR .025 POSTS. FOR TWO INCH TERMINATION POST NUMBERING AND .020 x .025 TERM POST MARKING SEE SHEET 2, DETAIL "Y".

INNER GASKET IS SUPPLIED ONLY WHEN THE APPROPRIATE INNER GASKET MODIFICATION IS APPLIED TO THE END OF THE PART NUMBER. REFER TO MODIFICATION DESCRIPTION SHEETS FOR APPROPRIATE MOD. NUMBER. CONSULT FACTORY WHEN UNCERTAINTIES EXIST.

CONNECTORS WITH BENT TAILS FOR PCB APPLICATIONS HAVE .020 x .025 POSTS.

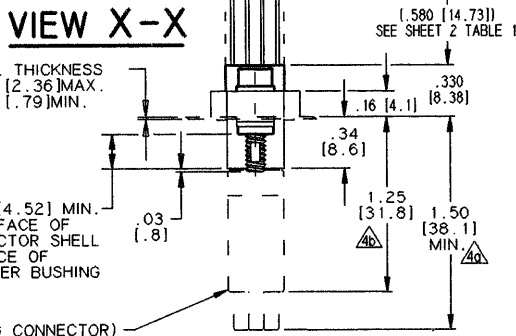
WHEN MOUNTING FLANGELESS CONNECTORS ADJACENT TO ONE ANOTHER AND USING THE .400 MINIMUM CENTERLINE LOCATION, THERE WILL BE NO WEB BETWEEN PANEL CUT-OUTS. SEE SHEET 3 FOR DETAILS.

VIEW X-X

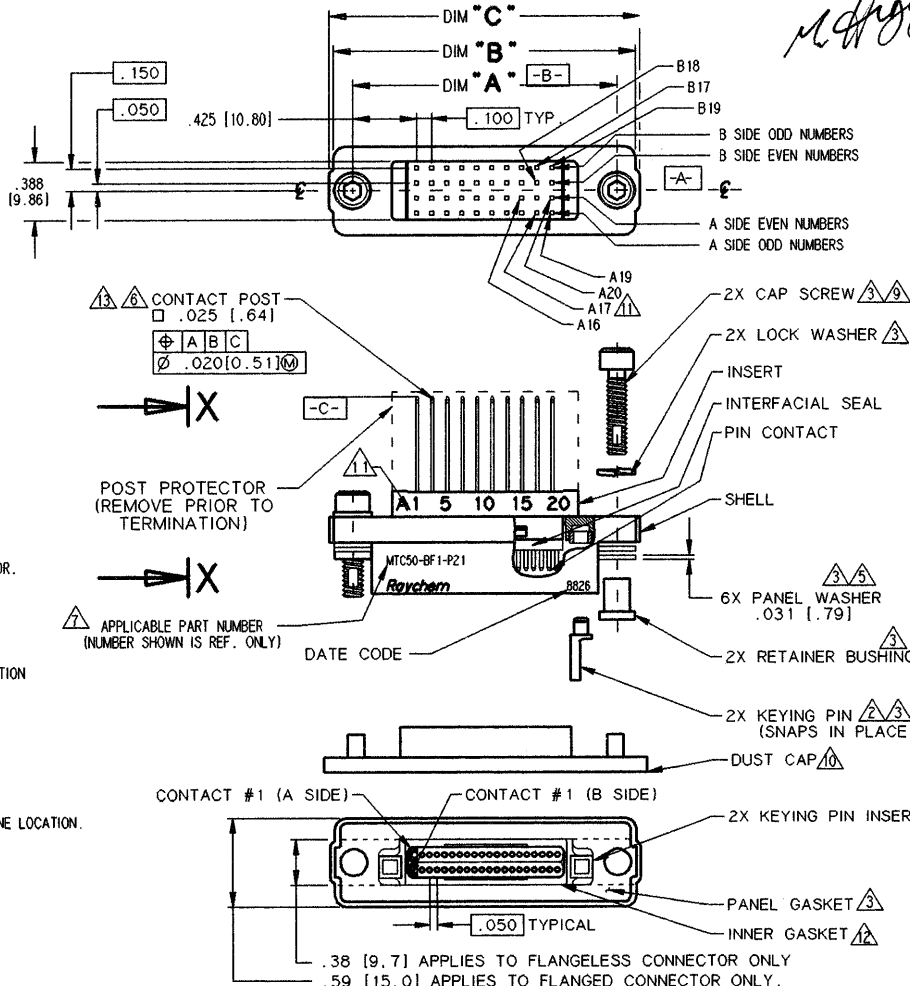
PANEL THICKNESS
.093 [2.36] MAX.
.031 [.79] MIN.

.178 [4.52] MIN.
FROM FACE OF
CONNECTOR SHELL
TO FACE OF
RETAINER BUSHING

(PLUG CONNECTOR)





REVISIONS		DATE	APPROVED
LTR	DESCRIPTION		
D	REVISED PER ECN T-21623	8/13/97	M. HIGGY



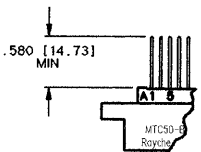
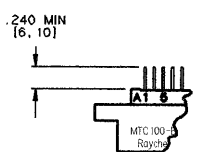
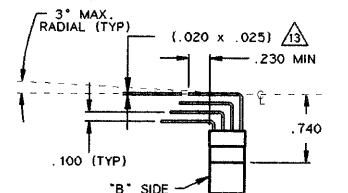
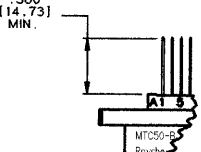
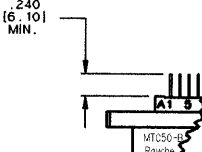
SPECIFICATION CONTROL DRAWING

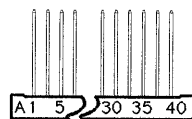
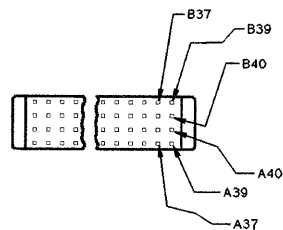
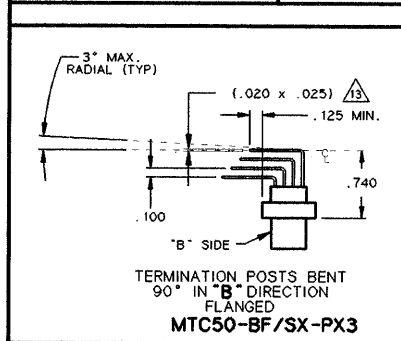
© Raychem Corporation 1988

UNLESS OTHERWISE SPECIFIED DIMENSIONS ARE IN INCHES. METRIC DIMENSIONS ARE IN BRACKETS.	DRAWN	LUTTICKEN	88SEPT20	Raychem <small>RAYCHEM CORPORATION 300 CONSTITUTION DRIVE MENLO PARK, CALIFORNIA 94025</small>			
	CHECKED						
	APPROVED	J. BLAIR	88 SEPT 30	TITLE CONNECTOR RECEPTACLE, FLANGED, BOXMOUNT, .025 SQ. TERMINATION POST			
	APPROVED	J. CAMERON	88 SEPT 30				
	CAD NAME	T21623A.DWG					
DECIMALS .XXX ± .005 [± .13mm] .XX ± .02 [± .51mm]				MTC50 SERIES			
ANGLES .X ±				SIZE C	CODE IDENT. NO. 06090	DWG. NO. MTC50-BXX-PXX-XXX-XXX 	REV D
WEIGHT: MAXIMUM (SEE SHEET 3, TABLE 1)	THIRD ANGLE PROJECTION 			DO NOT SCALE THIS DRAWING		SHEET 1 OF 6	

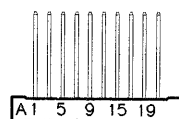
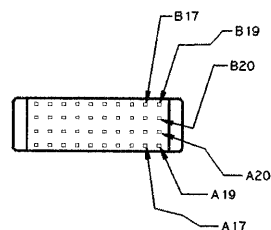
SHEET 1 OF 3 MTC50-BXX-PXX-XXX-XXX

TABLE 1 BASIC DESIGNS AVAILABLE

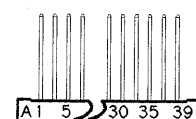
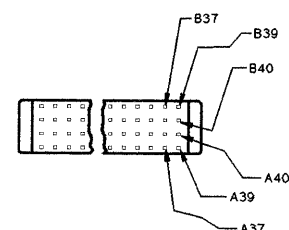
 <p>TERMINATION POSTS .580 MINIMUM LENGTH FLANGELESS MTC50-BJX-PX1</p>	 <p>TERMINATION POSTS .240 MINIMUM LENGTH FLANGELESS MTC50-BJX-PX2</p>	 <p>TERMINATION POSTS BENT 90° IN "B" DIRECTION FLANGELESS MTC50-BJX-PX3</p>	 <p>TERMINATION POSTS .580 MINIMUM LENGTH FLANGED MTC50-BF/SX-PX1</p>	 <p>TERMINATION POSTS .240 MINIMUM LENGTH FLANGED MTC50-BF/SX-PX2</p>
--	--	---	---	---



TWO INCH TERMINATION
POST NUMBERING
.025 SQ. POST



ONE INCH TERMINATION
POST NUMBERING
.020 X .025 SQ. POST



TWO INCH TERMINATION
POST NUMBERING
.020 X .025 SQ. POST

DETAIL Y



If this document is printed it becomes uncontrolled.
Check with the web for latest revision.

SPECIFICATIONS:

MATERIALS:

A. SHELL	ALUMINUM ALLOY PER QQ-A-591
B. CAP SCREW	STAINLESS STEEL PER QQ-S-763, 300 SERIES
C. RETAINER BUSHING	STAINLESS STEEL PER QQ-S-763, 300 SERIES
D. PANEL WASHER	STAINLESS STEEL PER QQ-S-763, 300 SERIES
E. LOCK WASHER	STAINLESS STEEL PER Q-S-763, 300 SERIES
F. PIN CONTACT	COPPER ALLOY 172 PER QQ-C-533
G. STANDARD PANEL GASKET	SILICONE ELASTOMER PER MIL-R-25988
EME PANEL GASKET	CONDUCTIVE FLUOROSILICONE
H. PIN INSERT	HIGH GRADE POLYARYLENE THERMOPLASTIC
J. KEYING PIN INSERT	HIGH GRADE POLARYLENE THERMOPLASTIC
K. KEYING PIN	HIGH GRADE POLARYLENE THERMOPLASTIC
L. INTERFACIAL SEAL	FLUOROSILICONE ELASTOMER PER MIL-R-25988

FINISH:

	APPLIES TO NICKEL PLATED CONNECTORS (STANDARD PLATING)	APPLIES TO CADMIUM PLATED CONNECTORS
A. SHELL	NICKEL PLATED PER MIL-C-26074 CLASS 3, GRADE B	CADMIUM PLATED PER QQ-P-416 OVER NICKEL UNDERPLATE
B. CAP SCREW	PASSIVATED PER QQ-P-35	CADMIUM PLATED PER QQ-P-416
C. RETAINER BUSHING	PASSIVATED PER QQ-P-35	CADMIUM PLATED PER QQ-P-416
D. PANEL WASHER	PASSIVATED PER QQ-P-35	CADMIUM PLATED PER QQ-P-416
E. LOCK WASHER	PASSIVATED PER QQ-P-35	CADMIUM PLATED PER QQ-P-416
F. PIN CONTACT	GOLD PLATED PER MIL-G-45204 TYPE 1, GRADE C, CLASS 1	

DESIGN AND CONSTRUCTION:

THE CONNECTORS SPECIFIED HEREIN ARE PANEL MOUNTED RECEPTACLES WITH FIXED (NON REMOVABLE) PIN INSERTS AND CONTACTS. THE CONNECTOR IS WITHOUT PROVISIONS FOR CABLE CLAMPS OR TERMINATION SEALS.

PERFORMANCE:

THE APPLICABLE RAYCHEM SPECIFICATION FOR THIS PART IS C6111.
THIS PART IS NOT QUALIFIED TO C6111.

HUMIDITY
ALTITUDE IMMERSION
ALTITUDE-LOW TEMPERATURE
FLUID IMMERSION

THE CONNECTOR TERMINATION END MUST BE SUITABLY PROTECTED
FOR TESTING OR APPLICATION IN ANY OF THESE ENVIRONMENTS.

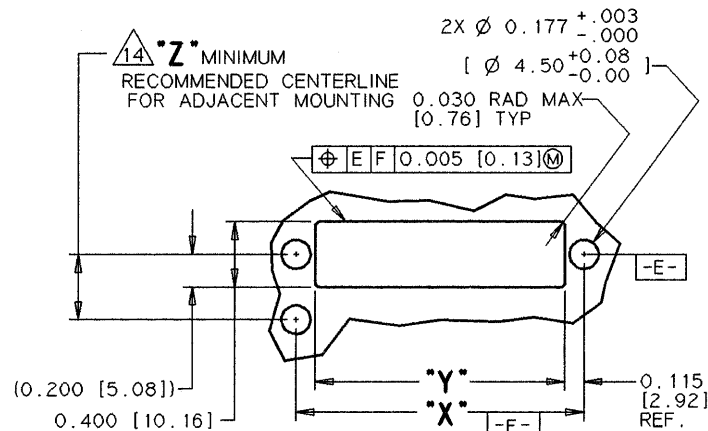


TABLE 2							
CONNECTOR SIZE	"A"	"B"	"C"	"X"	"Y"	"Z" (MIN)	WEIGHT lbs. (gr.) MAX
1 INCH	FLANGELESS 1.750 [44.45]	2.00 [50.8]		1.750 [44.45]	1.520 [38.61]	0.400 [10.16]	0.038 [17.24]
	FLANGED 1.750 [44.45]		2.06 [52.3]	1.750 [44.45]	1.520 [38.61]	0.600 [15.24]	0.048 [21.77]
2 INCH	FLANGELESS 2.750 [69.85]	3.00 [76.2]		2.750 [69.85]	2.520 [64.00]	0.400 [10.16]	0.057 [25.85]
	FLANGED 2.750 [69.85]		3.06 [77.7]	2.750 [69.85]	2.520 [64.00]	0.600 [15.24]	0.072 [32.66]

TABLE 3	
PANEL THICKNESS	NUMBER OF PANEL WASHERS FOR EACH FASTENER
.031 / .036 [.8] / [1.9]	2
.062 / .067 [1.5] / [1.7]	1
.093 / .097 [2.3] / [2.4]	0

TABLE 4 PRE-PRODUCTION TRACKING		
PART NUMBER	LEVEL	DESCRIPTION
MTC50-BJI-P33-PP1	PP1	MACHINED SHELL

If this document is printed it becomes uncontrolled.
Check with the web for latest revision.

DWS. NO.
MTC50-BXX-PXX-XXX-XXX

CAD NAME: T2.16236 SHEET 3 OF 3