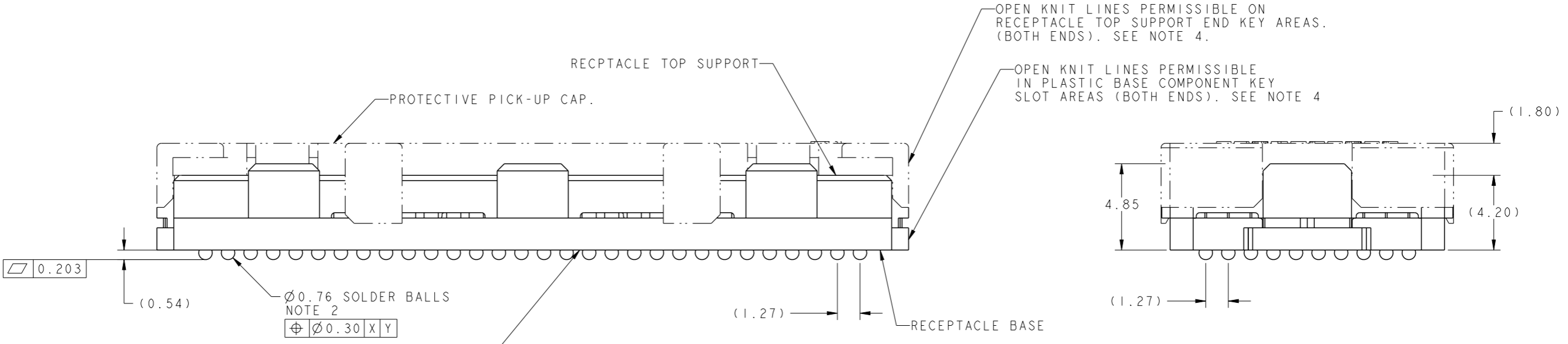
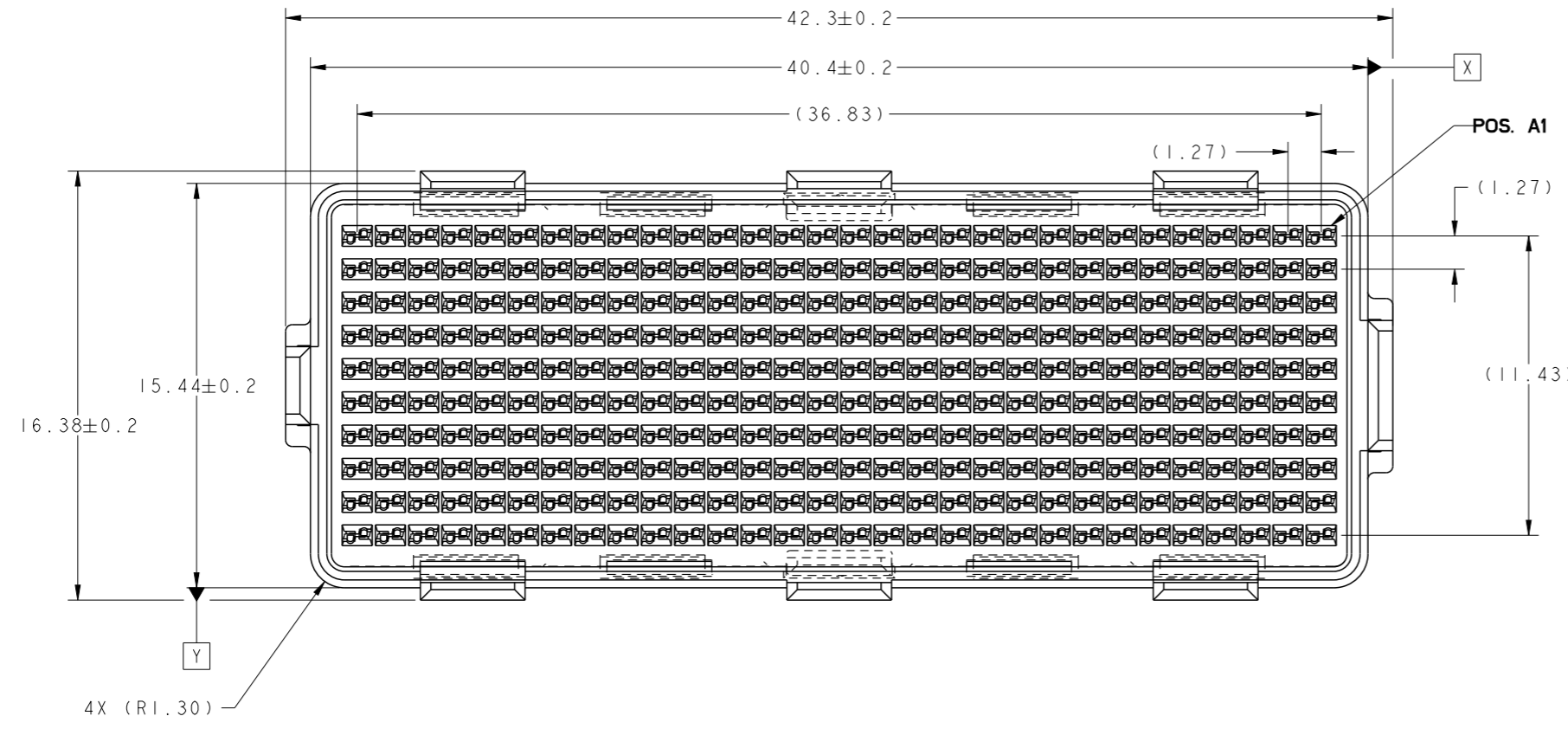


PRODUCT NUMBER
SEE TABLE-SHEET 4

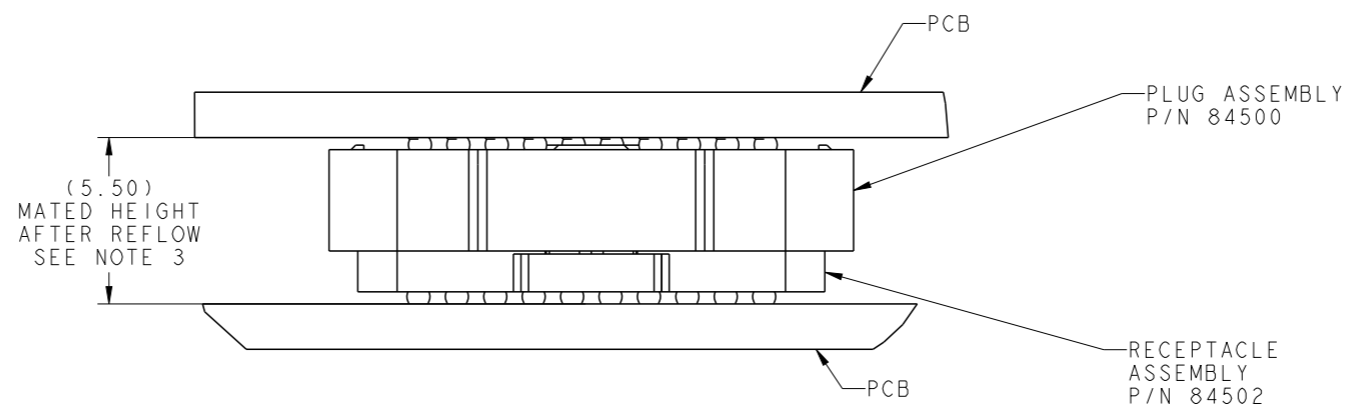


CONTINUOUS OPEN KNIT LINE CRACKS (TRAVERSING THE ENTIRE BODY LENGTH OF THE CONNECTOR) WHICH CAUSE CRITICAL-TO-FUNCTION DIMENSIONAL CHANGES THAT AFFECT THE CONNECTORS MECHANICAL ALIGNMENT FEATURES ARE NOT PERMISSIBLE. SEE NOTE 4.

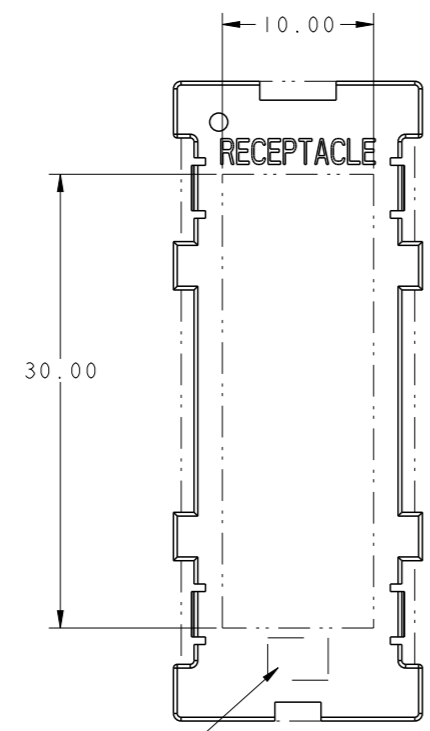
spec ref	-	dr	Kurdekar, Nare	2025/05/29	projection	mm	size	A3	scale	4:1
tolerance std	ASME Y14.5	eng	Robin Johnson	2025/07/07			ecn no	ELX-V-56184-1		
	TOLERANCES UNLESS OTHERWISE SPECIFIED	chr	-	rel level				Released		
surface	linear	appr	Jeremy Ellis	2025/07/07	product family		dwg no	5.5mm RECEPTACLE ASSEMBLY		
	angular						rev	10 X 30 = 300 POSITIONS		
ASME Y14.5	0.X ±0.3				amphenol-icc.com	cat. no.	Product - Customer Drw	sheet 1 of 4		
	0.XX ±0.13									
	0.XXX ±0.051									
	0° ±2°									

© 2020 Amphenol Corporation
 Amphenol FCI

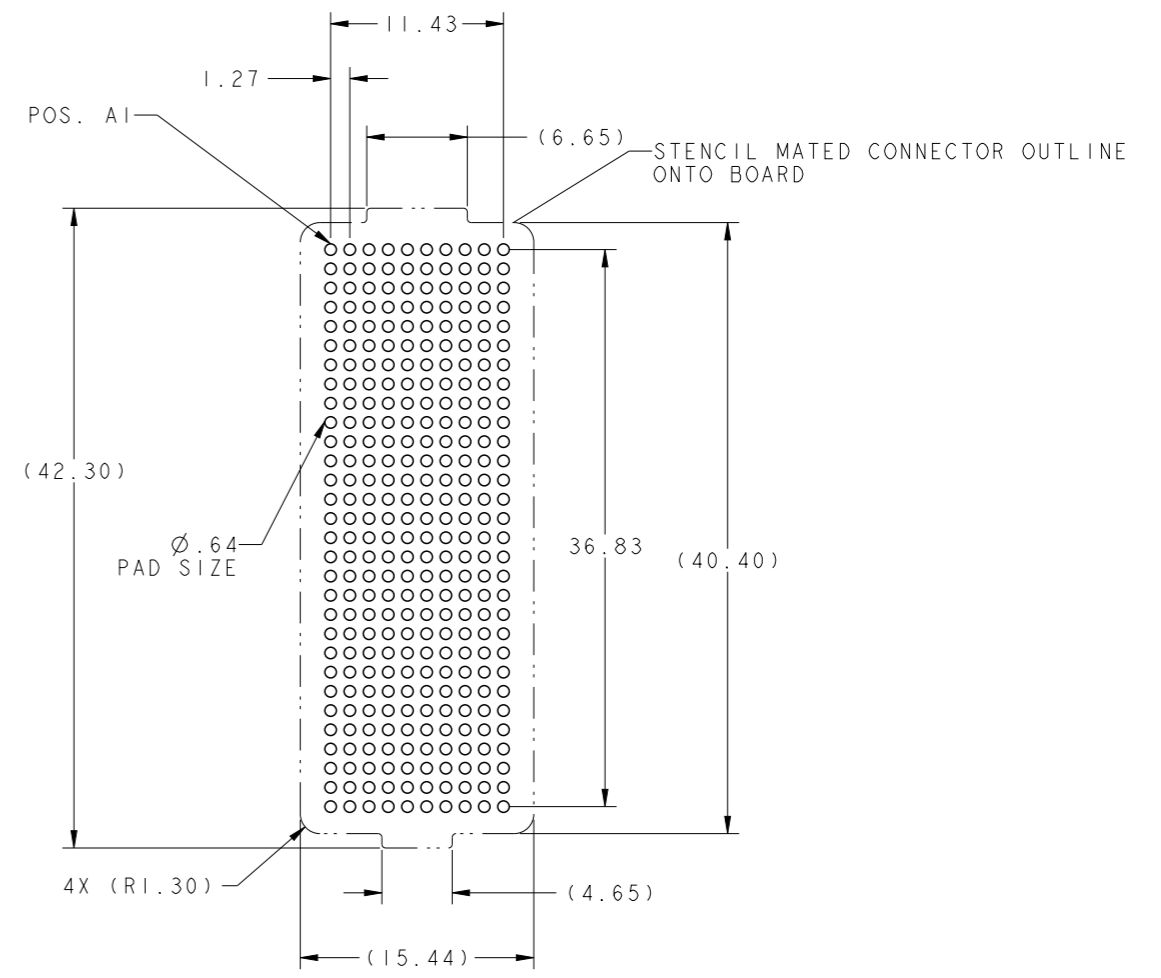
PRODUCT NUMBER
SEE TABLE-SHEET 4



MATED HEIGHT AFTER REFLOW IS BASED ON $\varnothing 0.64\text{mm}$ PAD (METAL-DEFINED) AND 0.13mm SOLDER PASTE STENCIL THICKNESS. SEE NOTE 3.
END VIEW MATED CONNECTORS



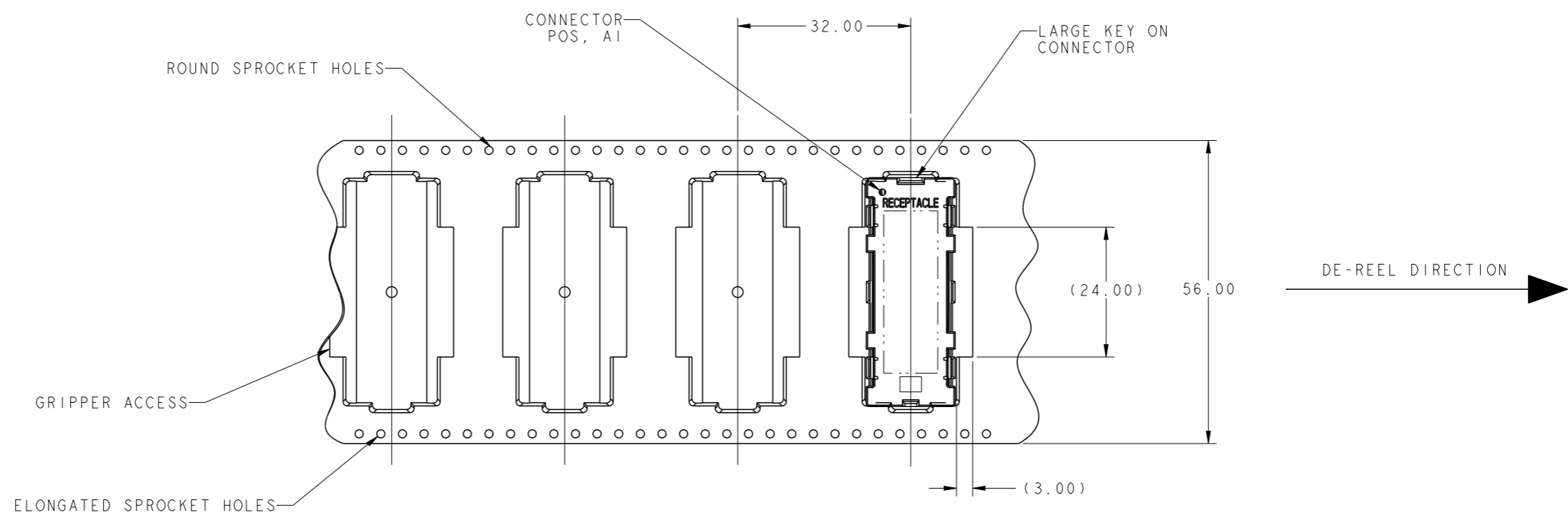
FLAT AREA FOR PICK UP CAP



BOARD PATTERN

spec ref	-	dr	Kurdekar, Nare	2025/05/29	projection	mm	size	A3	scale	2:1
tolerance std	ASME Y14.5	eng	Robin Johnson	2025/07/07			ecn no	ELX-V-56184-1		
TOLERANCES UNLESS OTHERWISE SPECIFIED		chr	-	-			rel level	Released		
surface	linear	0.X	±0.3	Amphenol FCI amphenol-icc.com	product family		dwg no	5.5mm RECEPTACLE ASSEMBLY		
		0.XX	±0.13		10 X 30 = 300 POSITIONS		rev	R		
	angular	0°	±2°		cat. no.	Product - Customer Drw		sheet 2 of 4		

PRODUCT NUMBER
SEE TABLE-SHEET 4



TAPE & REEL PACKAGE
PER EIA 481-3

Amphenol
FCi

© 2020 Amphenol Corporation

spec ref	-	dr	Kurdekar, Nare	2025/05/29	projection	mm	size	A3	scale	4:1
tolerance std	ASME Y14.5	eng	Robin Johnson	2025/07/07			ecn no	ELX-V-56184-1		
		chr	-	-			rel level	Released		
surface	linear	appr	Jeremy Ellis	2025/07/07	product family		dwg no	5.5mm RECEPTACLE ASSEMBLY		rev
								10 X 30 = 300 POSITIONS		R
ASME Y14.5	angular		amphenol-icc.com	cat. no.	Product - Customer Drw		sheet 3 of 4			

Creo File:ELX-WC-A3C.REV F.2020-12-21

PRODUCT NUMBER
SEE TABLE-SHEET 4

PRODUCT NUMBER	PICK-UP CAP (NATURAL OR BLACK COLOR)	CONTACT PLATING AND THICKNESS	SOLDER BALL	NOTES
84502-001	YES	15µ" (0.38µm) Au	SnPb	
84502-001LF	YES	15µ" (0.38µm) Au	LEAD FREE	6
84502-091	YES	15µ" (0.38µm) GXT	SnPb	
84502-091LF	YES	15µ" (0.38µm) GXT	LEAD FREE	6
84502-101	YES	30µ" (0.76µm) Au	SnPb	
84502-101LF	YES	30µ" (0.76µm) Au	LEAD FREE	6
84502-191	YES	30µ" (0.76µm) GXT	SnPb	
84502-191LF	YES	30µ" (0.76µm) GXT	LEAD FREE	6
84502-201	YES	50µ" (1.27µm) Au SPECIAL	SnPb	7 AND 8
84502-201LF	YES	50µ" (1.27µm) Au SPECIAL	LEAD FREE	6, 7 AND 8
84502-291	YES	50µ" (1.27µm) GXT SPECIAL	SnPb	7 AND 8
84502-291LF	YES	50µ" (1.27µm) GXT SPECIAL	LEAD FREE	6, 7 AND 8
84502-A01	YES	30µ" (0.76µm)	SnPb	9
84502-A01LF	YES	30µ" (0.76µm)	LEAD FREE	6 AND 9
84502-301	YES	15µ" (0.38µm) Au SPECIAL	SnPb	9
84502-301LF	YES	15µ" (0.38µm) Au SPECIAL	LEAD FREE	6 AND 9
84502-401	YES	30µ" (0.76µm) Au SPECIAL	SnPb	9
84502-401LF	YES	30µ" (0.76µm) Au SPECIAL	LEAD FREE	6 AND 9
84502-501	YES	Au SPECIAL	SnPb	7, 8 AND 9
84502-501LF	YES	Au SPECIAL	LEAD FREE	6, 7, 8 AND 9

NOTES:

- ① **MAT'L:**
HOUSING: LCP
CONTACT: COPPER ALLOY

PLATING:
CONTACT: (SEE TABLE ON SHEET 4)
SOLDER BALL: (SEE TABLE ON SHEET 4)
EUTECTIC SnPb OR LEAD FREE
95.5Sn/4Ag/0.5Cu
- ② SOLDER BALLS WILL NOT BE PERFECT SPHERICAL SHAPE DUE TO REFLOW ATTACHMENT.
- ③ MATED HEIGHT EFFECTED BY CUSTOMER'S PCB PAD SIZE, PLATING, SOLDER REFLOW PROFILE, & SOLDER PASTE.
- ④ KNIT LINE: SLIGHT VISIBLE MARKS (USUALLY A LINE) INDICATING THE DIRECTION AND MEETING POINT OF PLASTIC RESIN FLOW FRONTS TRAVELING AROUND ANY OBSTRUCTIONS TO THE RESIN FLOW VIA THE REQUIRED MOLD TOOLING.
- ⑤ FOR PROPER APPLICATION FOLLOW AFCI APPLICATION SPECIFICATION GS-20-033 LEAD FREE SOLDER BALLS WILL NOT SOLDER PROPERLY IN A LEADED SOLDER PROCESS DUE TO A HIGHER REFLOW TEMPERATURE. LEAD FREE PRODUCT IS THEREFORE NOT BACKWARDS COMPATIBLE WITH LEADED OR SOME SOLDERING APPLICATIONS. REFERENCE FCI APPLICATION SPECIFICATION
- ⑥ THIS PRODUCT MEETS EUROPEAN UNION DIRECTIVES AND OTHER COUNTRY REGULATIONS AS DESCRIBED IN GS-47-0004 PRODUCT MEETING THIS DIRECTIVE IS IDENTIFIED IN THE LOT CODE NUMBER MARKED ON EACH PART BY HAVING AN "X" IN THE SEVENTH CHARACTER POSITION
- ⑦ PLATING FOR INDICATED -2XX SERIES PRODUCT NUMBERS. MEET THE REQUIREMENTS OF GR-1217-CORE, CENTRAL OFFICE ENVIRONMENT, (25 YEAR LIFE EXPECTANCY). THE CONTACTS ON THESE PRODUCT NUMBERS HAVE SPECIAL GEOMETRY, ALSO.
- ⑧ 84502-A01 AND -A01LF ARE CUSTOMER SPECIALS.
- ⑨ CURRENT COMPANY LOGO TO BE VISIBLE IN APPROXIMATE AREA SHOWN
- ⑩ A SYMBOL WILL BE NEXT TO ANY DIMENSION, NEW VIEW OR NOTE WHICH HAS BEEN MODIFIED WITH THE CURRENT DRAWING REVISION.

spec ref	-	dr	Kurdekar, Nare	2025/05/29	projection		size	A3	scale	6:1
tolerance std	ASME Y14.5	eng	Robin Johnson	2025/07/07	mm		ecn no	ELX-V-56184-1		
	TOLERANCES UNLESS OTHERWISE SPECIFIED	chr	-	-	product family		rel level	Released		
surface	linear	appr	Jeremy Ellis	2025/07/07	Amphenol FCI	5.5mm RECEPTACLE ASSEMBLY	dwg no		rev	R
	ASME Y14.5	angular			amphenol-icc.com	10 X 30 = 300 POSITIONS	cat. no.	Product - Customer Drw	sheet	4 of 4