

Type 0ADGX

High In-Rush Fuse Series

Pb 0ADGX Series, 6x32mm Ceramic Tube High In-Rush Fuse

RoHS Compliant

Description

500VAC/DC rated ceramic tube cartridge fuse in a compact 6 x 32mm package.

Features

- High I²T withstand High In-Rush Current
- High breaking capacity for high energy application
- Full compliance with EU Directive 2011/65/EU and amending directive 2015/863
- Lead Free

Applications



- Industrial Power Supplies
- Charging Module for EV/HEV

LEAD FREE = **Pb**



UK
CA c **UL** US CE

Physical Specifications

Materials	Body : Ceramic
	Cap: Silver Plated Caps
	Pigtail Leads : Tin Plated Copper
Marking	On Fuse :
	"bel"
	"0ADGX", "Current Rating", "Voltage Rating", "Appropriate Safety Logos"
	On Label :
	"bel", "0ADGX", "Current Rating", "Voltage Rating", "Interrupting Rating", "Appropriate Safety Logos" and "  ", "  "(China RoHS compliant).

Electrical Characteristics

Testing Current	Opening Time
100%	4 hours, Minimum
250%	60 seconds, Maximum

Safety Agency Approvals

Safety Agency	Safety Agency Certificate	Ampere Rating / Voltage Rating	Ampere Range / Volt @ I.R. ability*
UL US	E20624	8A-30A/500V AC/DC	8A-30A/500V@1kA AC/DC
*I.R.= Interrupting Rating = Short Circuit Rating(Amps)			

Environmental Specifications

Operating Temperature	-50°C to 125°C
Terminal Strength	MIL-STD-202, Method 211, Test Condition A
Lead Solderability	MIL-STD-202, Method 208
Mechanical Vibration	MIL-STD-202, Method 201
Thermal Shock	MIL-STD-202, Method 107, Test Condition B (5 cycles -65°C to 125°C)
Humidity	MIL-STD-202, Method 103, Test Condition A: 95%RH and 40°C for 240 hours

Electrical Specifications

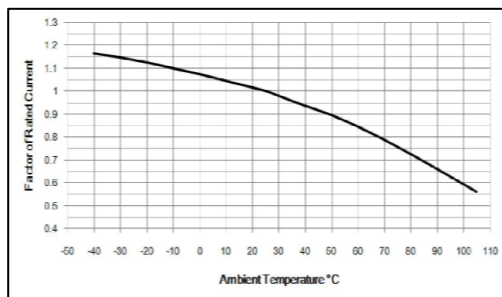
Part Number	Ampere Rating	Typical Cold Resistance (mOhms)	Voltage and Interrupting Ratings	Typical Pre-Arcing I ² t (A ² Sec)
0ADGX8000-XX	8A	15	See Table of Ratings on Page 1 for Voltage and associated Interrupting Ratings	165
0ADGX9100-XX	10A	11.5		260
0ADGX9160-XX	16A	5.3		410
0ADGX9200-XX	20A	4.0		680
0ADGX9250-XX	25A	3.0		1500
0ADGX9300-XX	30A	2.5		2350

Consult manufacturer for other ratings

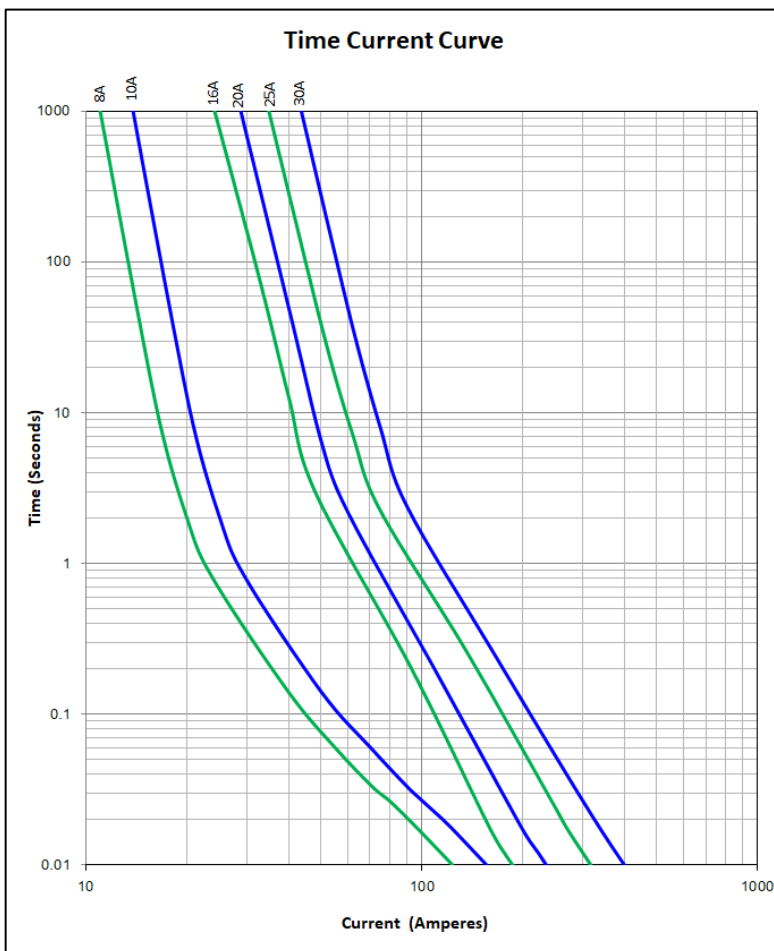
* DC Cold Resistance are measured at <10% of rated current in ambient temperature of 25 °C

* Typical Pre-arcing I²t are measured at 10In Current

Temperature Re-Rating Curve



Average Time Current Curve



Soldering parameters

Wave Soldering:

Solder Pot Temperature: 260°C Max.

Solder Dwell Time: 10s Max.

Hand-Solder:

Solder Iron Temperature: 350°C +/- 5°C

Heating Time: 5s Max.

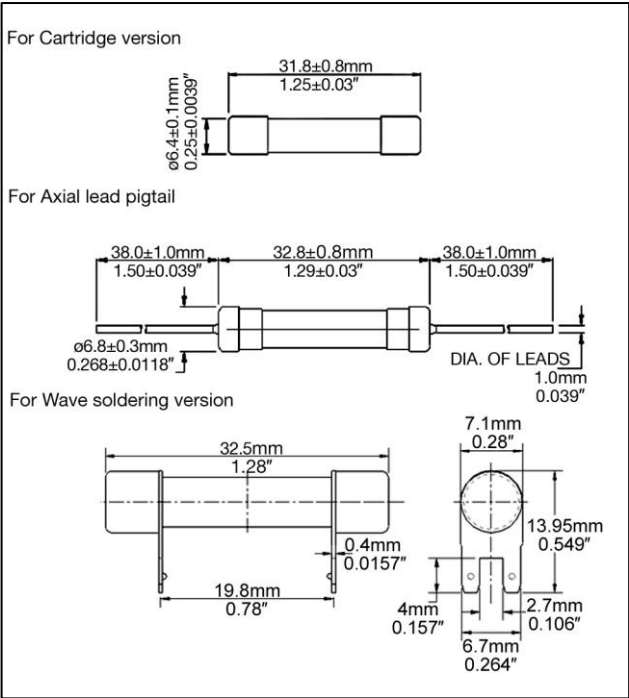
Type 0ADGX

4 / 4

Fuse FGNO Explanation
0ADG X [XXXX] -XX
0ADGC/P/W=0ADGC/P/W; [XXXX]=Ampere Rating; XX=See Ordering Information as below

Amps	Bel FGNO[XXXX]
10	9100
16	9160
20	9200
25	9250
30	9300

Mechanical Dimensions



Ordering Information

0ADG X XXXX - X X

FUSE TYPE _____

0ADG

MOUNTING TAB STYLE _____

C = For Cartridge version
P = For Axial lead pigtail
W = Wave soldering version

AMPERE RATING _____

Refer to fuse FGNO explanation table

PACKAGING CODE _____

B = Bulk (Cartridge version)
R = Bulk (Pigtail standard length)

QUANTITY CODE _____

E = 1k / box

Packaging

Packaging Option	Quantity	Packaging Code
Bulk	1000	BE
Bulk (Pigtail standard length)	1000	RE



Specifications subject to change without notice

Bel Fuse Inc.
206 Van Vorst Street
Jersey City, NJ 07302 USA

+1 201.432.0463
Bel.US.CS@belf.com
belfuse.com/circuit-protection

© 2023 Bel Fuse, Inc.

Rev. :0ADGX Apr2023