



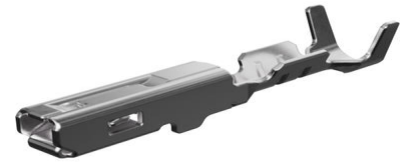
**Part Number :** [340814003](#)

**Product Description :** MX150 Cable Seal Female Terminal, Silver Plating, 22 AWG, Right Reel Payoff

**Series Number :** 34081

**Status :** Active

**Product Category :** Crimp Terminals



---

## Documents and Resources

### Drawings

[340814003\\_sd.pdf](#)

[313025040-000.pdf](#)

[STEP AP242](#)

[SOLIDWORKS](#)

[Creo](#)

### Specifications

[AS-34083-002-001.pdf](#)


[PS-34083-002-001.pdf](#)

[TS-34081-003-001.pdf](#)

---

## Product Environment Compliance

### Compliance

GADSL/IMDS	Compliant with Exemption 44; 34; 33
China RoHS	 per SJ/T 11365-2006
EU ELV	Compliant per 2000/53/EC
Low-Halogen Status	Low-Halogen per IEC 61249-2-21
REACH SVHC	Not Contained per D(2025)4165-DC (25 June 2025)
EU RoHS	Compliant per EU 2015/863

### [Compliance Statements](#)

- EU RoHS

- REACH SVHC
- Low-Halogen

#### Industry Documents

- IPC 1752A Class C
- IPC 1752A Class D
- Molex Product Compliance Declaration
- IEC-62474
- chemSHERPA (xml)

#### Substances of Interest

- PFAS

#### EU RoHS Certificate of Compliance

#### Additional Product Compliance Information

## Part Details

### General

Status	Active
Category	Crimp Terminals
Series	34081
Description	MX150 Cable Seal Female Terminal, Silver Plating, 22 AWG, Right Reel Payoff
Application	Power, Wire-to-Board, Wire-to-Wire, Automotive
Comments	For automatic and semi-automatic crimping, use Left Reel Payoff terminals. See Sales Drawing for Left Reel Payoff Part Numbers.
Product Name	MX150
UPC	822350754484

### Electrical

Current - Maximum per Contact	Contact Molex
Voltage - Maximum	14V DC

### Physical

Gender	Female
Grip Code	22

Material - Metal	High Performance Alloy (HPA)
Material - Plating Mating	Silver
Material - Plating Termination	Tin
Net Weight	0.364/g
Packaging Type	Reel
Plating min - Mating	0.762µm
Plating min - Termination	2.540µm
Termination Interface Style	Crimp or Compression
Wire Insulation Diameter	1.70mm max.
Wire Size (AWG)	22
Wire Size mm <sup>2</sup>	0.50

### Solder Process Data

Lead-Free Process Capability	N/A
------------------------------	-----

### Mates With / Use With

#### Use with Part(s)

Description	Part Number
MX150 Mat-Sealed Single Row Female Connector Assemblies	<u>33471</u>
MX150 Mat-Sealed Dual Row Female Connector Assemblies	<u>33472</u>
MX150 Cable-Sealed Single Row Female Connector Assemblies	<u>34062</u>
MX150 Cable Sealed Single Row Female Connectors	<u>34250</u>

---

### Application Tooling

#### Global

Description	Part Number
Extraction Toolkit for MX150 Connectors	<u>2002220700</u>
Extraction Tool for MX150L, MX150, PT Bulb Socket, iGrid,	<u>638131500</u>

SPOX, and Wire-to-Motor Terminals	
Hand Crimp Tool for Cable Seal Crimp Terminals	<u>638199300</u>

---

This document was generated on Dec 16, 2025