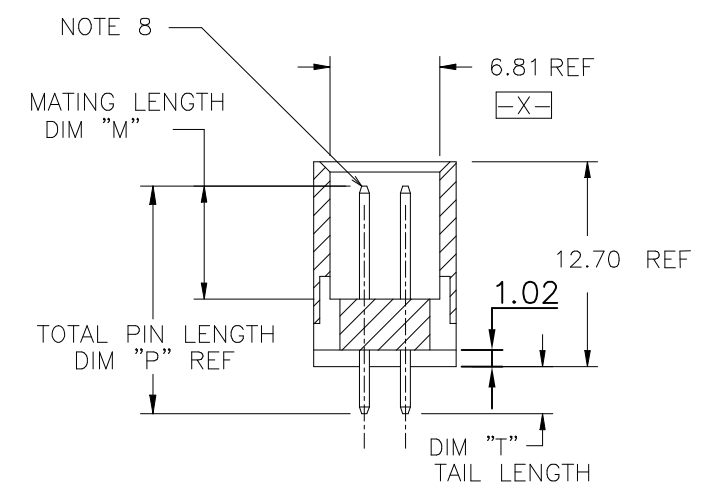
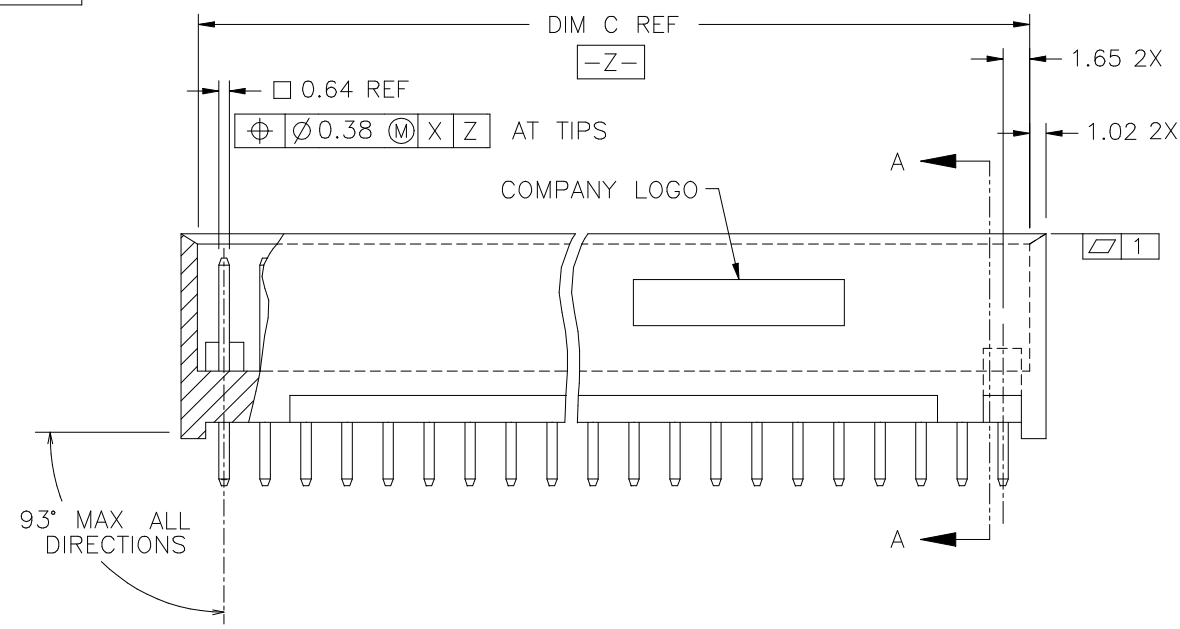
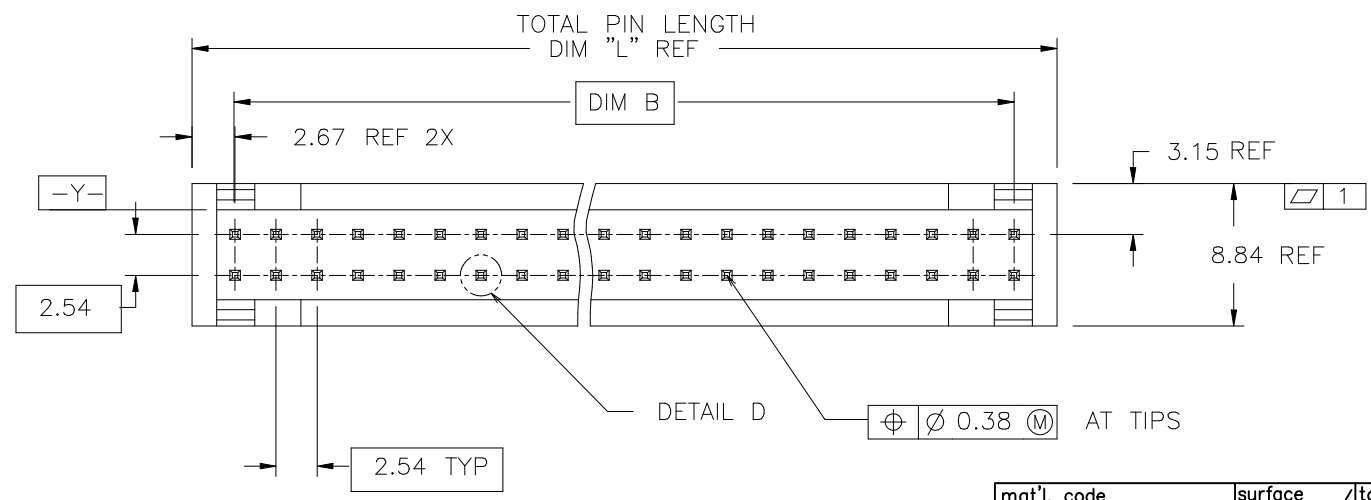


Amphenol
FCI
© 2016 APCI

PRODUCT NUMBER
SEE TABLE



SECTION A-A



mat'l. code NOTES 2 & 3				surface ISO 1302	tolerance ISO 1101	projection MM	product family HEADER
ltr	ecn no	dr	date	tolerances unless otherwise specified		scale 1:1	title
K	M05-0089	ERE	5/20/05	angles	linear		VERTICAL STACKING 2-ROW HEADER
L	M06-0289	AGS	7/29/06				.500/12.70 W/O MOUNTING HOLES
M	ELX-N-52996	MZ	2024-09-25				
				dr	M. FETROW	8/11/95	dwg no
				enr	L. FYE	8/11/95	sheet 1 of 4
				chr	T. BREWBAKER	8/11/95	size
				appd	L. FYE	8/11/95	A3
sheet index	revision sheet	M	M	M			type Product Customer Drawing
		1	2	3			



D

Amphenol
FCI

C

© 2016 APCI

D

POSITION TABLE	
PRODUCT NO	SIZE
XXXXX-001	2X5
-002	2X6
-003	2X7
-004	2X8
-005	2X9
-006	2X10
-007	2X11
-008	2X12
-009	2X13
-010	2X14
-011	2X15
-012	2X16
-013	2X17
-014	2X18
-015	2X19
-016	2X20
-017	2X21
-018	2X22
-019	2X23
-020	2X24
-021	2X25
-022	2X26
-023	2X27
-024	2X28
-025	2X29
-026	2X30
-027	2X31
-028	2X32
-029	2X33
-030	2X34
-031	2X35
XXXXX-032	2X36

PART NUMBER INFORMATION

XXXXX-XXX LF

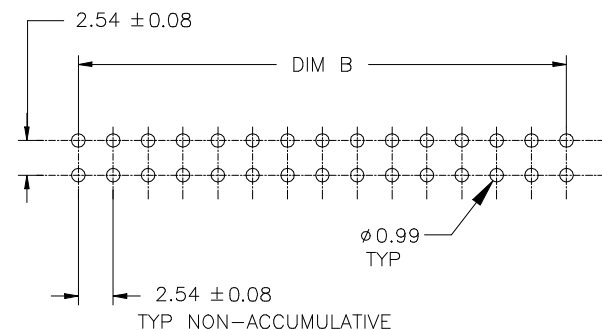
LEAD FREE OPTION

SEE POSITION TABLE
FOR SIZES NOTE 1

BASE PART NO.

NOTES

- SEE POSITION TABLE FOR PRODUCT NO AND SIZE TABULATION.
HOUSING DASH NO IS SAME AS HEADER DASH NO.
- DIM B = (NO OF COLUMNS - 1) TIMES 2.54 (METRIC)
- MOLDING MATERIAL: 20% MIN GLASS FILLED NYLON PER UL 94V-0.
COLOR: BLACK, OXYGEN INDEX 36.
- TERMINAL MATERIAL: 3/4 HARD PHOS BRONZE ALLOY UNS C51000.
- PIN RETENTION TO BE 3 LBS./1.4 KGS MINIMUM
PER PIN IN EITHER DIRECTION.
- COMPANY LOGO TO BE MOLDED IN APPROX LOCATION SHOWN.
- UL/CSA APPROVED.
- ADD "LF" SUFFIX AT THE END OF PART NUMBER FOR LEAD FREE OPTION.
- THE HOUSING WILL WITHSTAND EXPOSURE TO 260°C PEAK TEMPERATURE
FOR 15 SECONDS IN A WAVE SOLDER APPLICATION WITH A 1.5mm
MINIMUM THICK CIRCUIT BOARD. SEE APPLICATION NOTES/PROCEDURES
IF THEY ARE AVAILABLE.
- THIS PRODUCT MEETS EUROPEAN UNION DIRECTIVES AND OTHER
COUNTRY REGULATION AS DESCRIBED IN GS-22-008.
- PLATING OPTIONS:
MAY BE EITHER GOLD OR GXT PLATED AT MANUFACTURER'S OPTION.



RECOMMENDED PC BOARD LAYOUT
SCALE 2/1

mat'l. code NOTES 2 & 3				surface ISO 1302	tolerance ISO 406 ISO 1101	projection INCH/MM	product family HEADER			
ltr	ecr no	dr	date	tolerances unless otherwise specified		scale 1:1	title VERTICAL STACKING 2-ROW HEADER .500/12.70 W/O MOUNTING HOLES			
M				angles	linear		dwg no 69916			
				dr	M. FETROW	8/11/95	sheet 2 of 4			
				enr	L. FYE	8/11/95	size A3			
				chr	T. BREWBAKER	8/11/95	type Product Customer Drawing			
				appd	L. FYE	8/11/95				
sheet index	revision sheet									

1

2 3

4

5

6

PRODUCT NO
NOTE 8

TERMINAL PLATING
NOTE 11

69916-XXX	30u"/0.76u MIN Au OVER 50u"/1.27u Ni.
69916-033	30u"/0.76u MIN Au OVER 50u"/1.27u Ni.
69916-034	30u"/0.76u MIN Au OVER 50u"/1.27u Ni.
86363-XXX	15u"/0.38u Pd Ni WITH GOLD FLASH
88809-021	30u"/0.76u MIN Au OVER 50u"/1.27u Ni.

A

A

B

B

C

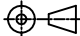

C

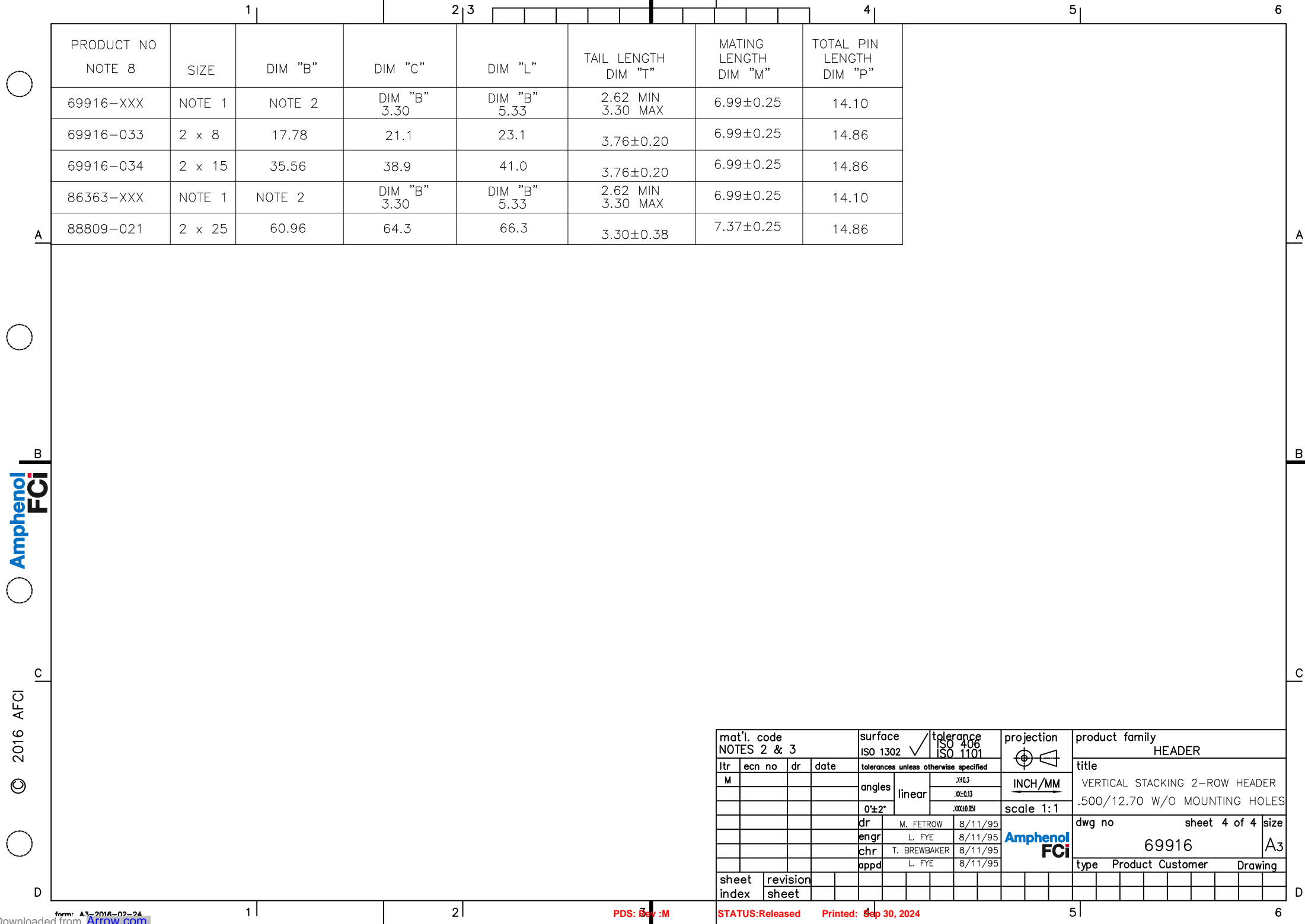
D

D

Amphenol
FCI

© 2016 APCI

mat'l. code NOTES 2 & 3				surface ISO 1302 ✓		tolerance ISO 406 ISO 1101		projection 		product family HEADER					
ltr	ecn no	dr	date	tolerances unless otherwise specified						INCH/MM scale 1:1		title VERTICAL STACKING 2-ROW HEADER 1.500/12.70 W/O MOUNTING HOLES			
M				angles linear		X0.3									
						X0.013									
						X0.001									
				dr	M. FETROW	8/11/95				dwg no		sheet 3 of 4		size	
				enr	L. FYE	8/11/95				69916		A3			
				chr	T. BREWBAKER	8/11/95				type		Product Customer		Drawing	
				appd	L. FYE	8/11/95									
sheet index		revision sheet													



PRODUCT NO NOTE 8	SIZE	DIM "B"	DIM "C"	DIM "L"	TAIL LENGTH DIM "T"	MATING LENGTH DIM "M"	TOTAL PIN LENGTH DIM "P"
69916-XXX	NOTE 1	NOTE 2	DIM "B" 3.30	DIM "B" 5.33	2.62 MIN 3.30 MAX	6.99±0.25	14.10
69916-033	2 x 8	17.78	21.1	23.1	3.76±0.20	6.99±0.25	14.86
69916-034	2 x 15	35.56	38.9	41.0	3.76±0.20	6.99±0.25	14.86
86363-XXX	NOTE 1	NOTE 2	DIM "B" 3.30	DIM "B" 5.33	2.62 MIN 3.30 MAX	6.99±0.25	14.10
88809-021	2 x 25	60.96	64.3	66.3	3.30±0.38	7.37±0.25	14.86

mat'l. code NOTES 2 & 3				surface ISO 1302		tolerance ISO 406 ISO 1101		projection 		product family HEADER			
ltr	ecn no	dr	date	tolerances unless otherwise specified						title			
M				angles		linear		INCH/MM		VERTICAL STACKING 2-ROW HEADER			
										.500/12.70 W/O MOUNTING HOLES			
				0±2°				scale 1:1					
		dr		M. FETROW		8/11/95				dwg no		sheet 4 of 4	size
		enr		L. FYE		8/11/95				69916		A3	
		chr		T. BREWBAKER		8/11/95							
		appd		L. FYE		8/11/95							
sheet index		revision sheet								type Product Customer		Drawing	