

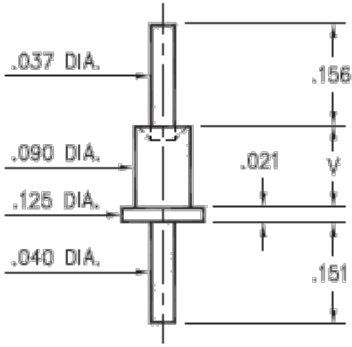


PRODUCT NUMBER: 2530-3-00-01-00-00-07-0

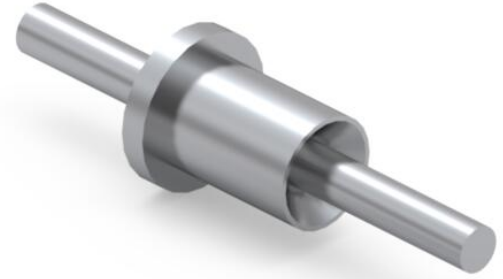
www.mill-max.com
DATA SHEET

2530-X-00-XX-00-00-07-0

Swage mount in .094 hole



| Basic Part Number | Board Thickness | Length V |
|-------------------|-----------------|----------|
| 2530-2 | .062 | .094 |
| 2530-3 | .094 | .125 |
| 2530-4 | .125 | .156 |



2530-3-00-01-00-00-07-0 SPECIFICATIONS

| General Info | |
|-----------------------------------|----------------------------------|
| Description ¹ : | Swage Terminal Pin |
| Mounting Feature: | Swage Mount |
| Mounting Hole: | .094" (2,388mm) |
| Alternate Mounting ² : | Through-Hole Soldertail Mount |
| Alternate Mounting Hole: | 0.0440 |
| Packaging: | Packaged in Bulk |
| RoHS: | No |
| Product Lifecycle ³ : | Active |
| Country Of Origin: | USA |

| Materials | |
|-------------------------------|--------------------------------------|
| Shell Material ⁴ : | Brass Alloy |
| Shell Plating ⁵ : | 200 - 300 μ" Tin/Lead over Nickel |

| Technical Specs | |
|--------------------------------------------|----------------------|
| Operating Temperature Range ⁶ : | - 55/+125° C |
| Maximum Current: | Application Specific |

NOTES:

1. Standard Tolerances:
Lengths +/- .005" (0,13)
Diameters: +/- .002" (0,051)
Angles: +/- 2°
2. For through-hole solder mounting of this part, the suggestion is to make the finished hole size, at its minimum, .004" larger than the diameter being soldered into the mounting hole.
3. Part is Active and in Production, No Scheduled Obsolescence
4. Brass Alloy 360 per ASTM B 16, or 385 per ASTM B455
5. TIN/LEAD (93/7) per ASTM B 545 (Appendix X6.3.2.5 to eliminate whisker growth) Bright finish; NICKEL per ASTM B 689, Type 2 (Bright)
6. Per IEC 60512-11-(4,-9,-10,-12)

ADDITIONAL NOTES AND SPECIFICATIONS

In the interest of improved design, quality and performance , Mill-Max reserves the right to make changes in its specifications without prior notice. Specifications and tolerances are provided wherever possible. The tolerance on dimensions of critical to function features is typically held tighter than the stated standard tolerances, such as press-fits, holes and lengths affecting the coplanarity of SMT products. Due to the wide variety of interconnects Mill-Max offers, the specific tolerances vary from product to product. If you need information regarding the tolerance of a particular part, please contact Technical Services.

RELATED LINKS AND DOCUMENTS

- Engineering Notebook: [Introduction to Swage Assembly](#)
- Engineering Notebook: [Introduction to Printed Circuit Board PCB Pins](#)
- Environmental Compliance: <https://www.mill-max.com/rohs>