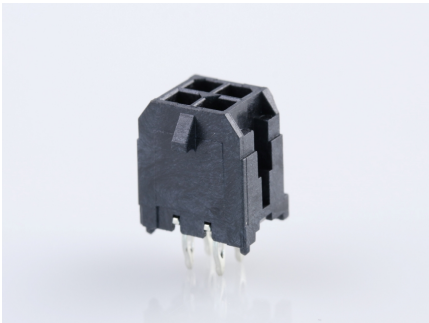




Part Number : [449140401](#)
Product Description : Micro-Fit CPI Header, Compliant Pin Interface, Dual Row, Vertical, 4 Circuits, Tin (Sn) Plating, Glow-Wire Capable
Series Number : 44914
Status : Active
Product Category : PCB Headers and Receptacles



Documents & Resources

Drawings

[449140401_sd.pdf](#)
[PK-70873-0314-001.pdf](#)

3D Models and Design Files

[449140401_stp.zip](#)
[SYM-44914-0401-001.zip](#)

Specifications

[430450001-PS-KO-000.pdf](#)
[430450001-PS-SP-000.pdf](#)
[PS-43045-001.pdf](#)
[430450007-TS-000.pdf](#)
[TS-43045-001-001.pdf](#)
[TS-43045-002-001.pdf](#)
[TS-46235-001-001.pdf](#)

Product Environment Compliance

Compliance

| | |
|--------------------|--|
| GADSL/IMDS | Not Relevant |
| China RoHS | |
| EU ELV | Not Relevant |
| Low-Halogen Status | Low-Halogen per IEC 61249-2-21 |
| REACH SVHC | Not Contained per D(2024)6225-DC (07 Nov 2024) |
| EU RoHS | Compliant per EU 2015/863 |

[Multiple Part Product Compliance Statements](#)

- Eu RoHS
- REACH SVHC
- Low-Halogen

Multiple Part Industry Compliance Documents

- IPC 1752A Class C
- IPC 1752A Class D
- Molex Product Compliance Declaration
- IEC-62474
- chemSHERPA (xml)

EU RoHS Certificate of Compliance

Part Details

General

| | |
|-------------|--|
| Status | Active |
| Category | PCB Headers and Receptacles |
| Series | 44914 |
| Description | Micro-Fit CPI Header, Compliant Pin Interface, Dual Row, Vertical, 4 Circuits, Tin (Sn) Plating, Glow-Wire Capable |
| Application | Power, Wire-to-Board |

| | |
|----------------|--|
| Comments | High Temperature, Square Pin; This Molex product is manufactured from material that has the following ratings, tested by independent agencies: a) A Glow Wire Ignition Temperature (GWIT) of at least 775 deg C per IEC 60695-2-13. b) A Glow Wire Flammability Index (GWFI) above 850 deg C per IEC 60695-2-12 and hence complies with the requirements set out in the International Standard IEC 60335-1 5th edition - household and similar electrical appliances - safety, section 30 Resistance to heat and fire. The customers using this product must determine its suitability for use in their particular application through testing or other acceptable means as described in end-product glow-wire flammability test standard IEC 60695-2-11 and any applicable product end-use standard(s). If it is determined during the customer's evaluation of suitability, that higher performance is required, please contact Molex for possible product options. |
| Component Type | PCB Header |
| Product Name | Micro-Fit CPI |
| UPC | 756054637654 |

Agency

| | |
|-----|---------|
| CSA | LR19980 |
| UL | E29179 |

Electrical

| | |
|-------------------------------|------|
| Current - Maximum per Contact | 8.5A |
| Voltage - Maximum | 600V |

Physical

| | |
|--------------------------------|-------|
| Breakaway | No |
| Circuits (Loaded) | 4 |
| Circuits (maximum) | 4 |
| Color - Resin | Black |
| Durability (mating cycles max) | 30 |

| | |
|--------------------------------|--------------------------------|
| Flammability | 94V-0 |
| Glow-Wire Capable | Yes |
| Material - Metal | High Performance Alloy (HPA) |
| Material - Plating Mating | Tin |
| Material - Plating Termination | Tin |
| Material - Resin | High Temperature Thermoplastic |
| Net Weight | 0.729/g |
| Number of Rows | 2 |
| Orientation | Vertical |
| Packaging Type | Tray |
| PCB Locator | Yes |
| PCB Retention | Yes |
| Pitch - Mating Interface | 3.00mm |
| Plating min - Mating | 5.080µm |
| Plating min - Termination | 5.080µm |
| Polarized to PCB | Yes |
| Shrouded | Fully |
| Stackable | No |
| Temperature Range - Operating | -40° to +105°C |
| Termination Interface Style | Through Hole - Compliant Pin |

Solder Process Data

| | |
|------------------------------|-----|
| Lead-Free Process Capability | N/A |
|------------------------------|-----|

Mates With / Use With

Mates with Part(s)

| Description | Part Number |
|--|------------------|
| Micro-Fit 3.0 Receptacle Housing, Dual Row, 4 Circuits, UL 94V-0, Low-Halogen, Black | <u>430250400</u> |

Application Tooling

Global

| Description | Part Number |
|-------------|-------------|
|-------------|-------------|

| | |
|--------------|------------------|
| Removal Tool | <u>622030455</u> |
|--------------|------------------|

This document was generated on Dec 13, 2024