

Color: white

| Material data | |
|---------------|----------|
| Color | white |
| Fire load | 0.033 MJ |
| Weight | 1.1 g |

| Commercial data | |
|-----------------------|---------------|
| Product Group | 22 (TOPJOB S) |
| PU (SPU) | 5 pcs |
| Packaging type | Foil |
| Country of origin | DE |
| GTIN | 4050821011064 |
| Customs tariff number | 39269097900 |

| Product Classification | |
|------------------------|----------------------|
| UNSPSC | 27111601 |
| eCl@ss 10.0 | 27-14-11-92 |
| eCl@ss 9.0 | 27-14-11-92 |
| ETIM 9.0 | EC002848 |
| ETIM 8.0 | EC002848 |
| ECCN | NO US CLASSIFICATION |

| Environmental Product Compliance | |
|----------------------------------|------------------------|
| RoHS Compliance Status | Compliant,No Exemption |

Downloads

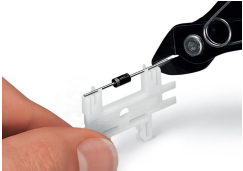
Environmental Product Compliance

Compliance Search

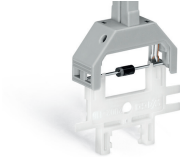
Environmental Product Compliance 2002-116

↓

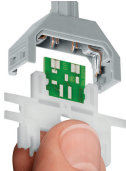
Installation Notes



Cutting component to the proper length.



Pressing component into plug contact via operating tool



Pushing PCB into plug contact via operating tool.



Opening cover via multi-purpose operating tool for component plugs.