



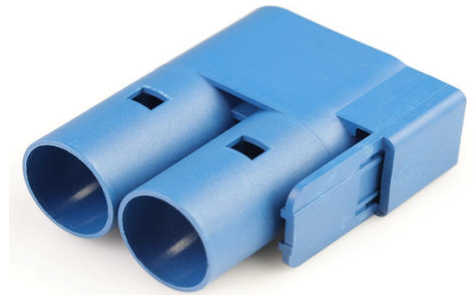
Part Number : [2119420003](#)

Product Description : PowerWize 6.00mm, 2-circuit, Mechanical Keying Option B, Color Coded Blue, Receptacle Housing, Bag

Series Number : 211942

Status : Active

Product Category : Connector Housings



Documents and Resources

Drawings

[2119420003_sd.pdf](#)

[2119420000-PK-000.pdf](#)

3D Models and Design Files

[STEP AP242](#)

[SOLIDWORKS](#)

[Creo](#)

Specifications


[2119410000-AS-000.pdf](#)

[2119410000-PS-000.pdf](#)

[2119410000-TS-000.pdf](#)

Product Environment Compliance

Compliance

GADSL/IMDS	Not Relevant
China RoHS	 per SJ/T 11365-2006
EU ELV	Not Relevant
Low-Halogen Status	Not Low-Halogen per IEC 61249-2-21
REACH SVHC	Not Contained per D(2025)6375-DC (05 Nov 2025) SCIP:9b57ad9e-307b-418e-a95f-35bbea3c472a

EU RoHS	Compliant per EU 2015/863
---------	---------------------------

Compliance Statements

- EU RoHS
- REACH SVHC
- Low-Halogen

Industry Documents

- IPC 1752A Class C
- IPC 1752A Class D
- Molex Product Compliance Declaration
- IEC-62474
- chemSHERPA (xml)

Substances of Interest

- PFAS

EU RoHS Certificate of Compliance

Additional Product Compliance Information

Part Details

General

Status	Active
Category	Connector Housings
Series	211942
Description	PowerWize 6.00mm, 2-circuit, Mechanical Keying Option B, Color Coded Blue, Receptacle Housing, Bag
Application	Power, Wire-to-Board, Wire-to-Busbar
Product Name	PowerWize
UPC	191130961382

Agency

CSA	LR19980
UL	E29179

Physical

Circuits (maximum)	2
Color - Resin	Blue

Diameter	6.00mm
Flammability	94V-0
Gender	Receptacle
Glow-Wire Capable	No
Keying to Mating Part	Yes
Lock to Mating Part	Yes
Material - Resin	PBT
Net Weight	18.323/g
Number of Rows	1
Packaging Type	Bag
Panel Mount	N/A
Pitch - Mating Interface	19.06mm
Polarized to Mating Part	Yes
Temperature Range - Operating	-40° to +125°C

Mates With / Use With

Mates with Part(s)

Description	Part Number
PowerWize 6.00mm, 2-circuit, Screw Mount, Mechanical Keying Option B, Color Coded Blue, Vertical Header, Tray	<u>2119370003</u>

Use with Part(s)

Description	Part Number
PowerWize 6.00mm Silver Plated Copper Alloy Crimp Socket, 2 AWG, Tray	<u>2046080006</u>
PowerWize 6.00mm Silver Plated Copper Alloy Crimp Socket, 6 AWG, Tray	<u>2046081006</u>
PowerWize 6.00mm Silver Plated Copper Alloy Crimp Socket, 10 AWG, Tray	<u>2046082006</u>
PowerWize 6.00mm Silver Plated Copper Alloy Crimp Socket, 4	<u>2046083006</u>

AWG, Tray	
PowerWize 6.00mm Silver Plated Copper Alloy Crimp Socket, 8 AWG, Tray	<u>2046084006</u>
PowerWize 6.00mm TPA (Terminal Position Assurance) Retainers	<u>211888</u>

This document was generated on Dec 29, 2025