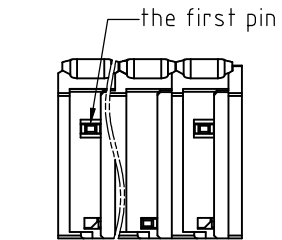
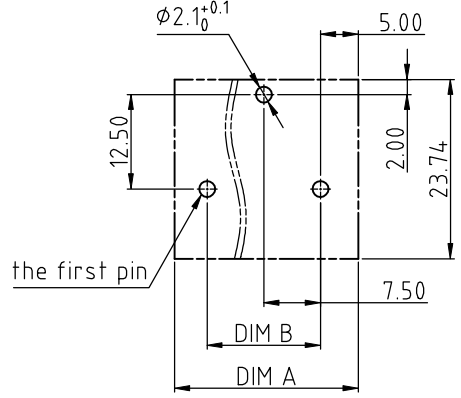


RoHS Compliant

REV	SIGN	DATE	DESCRIPTION	APPROVER
B		20220621	Initial release	Rhine
THIS IS CAD DRAWING, DO NOT REVISE MANUALLY!!!				

- Material:
- Item (a) Lever: Thermoplastic (UL 94V-0), White RAL9003
 - Item (b) Left side body: Thermoplastic (UL 94V-0)
 - Item (c) Middle body-1: Thermoplastic (UL 94V-0)
 - Item (d) Right side body: Thermoplastic (UL 94V-0)
 - Item (e) Middle body-2: Thermoplastic (UL 94V-0)
 - Item (f) Cam: Thermoplastic (UL 94V-0), White RAL9003
 - Item (g) Spring clamp: Stainless steel
 - Item (h) Back Contact: Copper, Tin plated over Nickel plated
 - Item (i) Front Contact: Copper, Tin plated over Nickel plated
- Electrical:
- Voltage rating: 600 V 800V (III/3) 1000V(III/2) 1000V(III/2)
 - Current rating: 30A 41A
 - Wire range(AWG): 10-24 (Solid & Stranded)
 - Wire range: 0.75mm²-6mm²(Flexible&Solid & Rigid stranded)
 - Wire strip length: 11-12mm
 - Withstanding Voltage: 2.2KV 4.2KV
 - Rated impulse Withstanding Voltage: 8KV
 - Operating temperature: -40°C to +115°C
 - Soldering temperature: 260°C±5°C/5 Sec
 - Safety Approval:
 - Critical dimension:



No. OF POLES	Body	Color	RoHS compliant (lead<4%) In copper Alloy
02 2 CONTACTS	0	Black (RAL9005)	
03 3 CONTACTS	2	Red (RAL3001/D)	
...	3	Orange(RAL2011/P)	
12 12 CONTACTS	4	Yellow(RAL1018/A)	
	5	Green(RAL6018/T)	
	6	Blue (RAL5015/A)	
	8	Grey(RAL7004/P)	
	9	White(RAL1102)	
	C	Multiple colors	

NZ xx 20 x C xxxx G

0000: "@ Logo (Standard)

000A: "ANYTEK" Mark

DIM		TOL				
		1P	2P	3P--4P	5P--8P	9P--12P
Dim A	N×7.5±1.8	±0.20	±0.40	±0.40	±0.50	±0.60
Dim B	(N-1)×7.5	/	±0.20	±0.40	±0.50	±0.60

Amphenol ANYTEK

CUSTOMER COPY

ALL RIGHTS RESERVED. REPRODUCTION OR ISSUE TO THIRD PARTIES IN ANY FORM WHATEVER IS NOT PERMITTED WITHOUT WRITTEN AUTHORITY FROM THE PROPRIETOR. PROPERTY OF ANYTEK TECHNOLOGY CO., LTD

TITLE	NZ7.5 series round hole				DWG NO.	8NZ0001-7.5	
PART NO.	NZxx20xCxxxxG				CUST NO.		
APPROVED	CHECKED	DESIGNED	DRAWN		Tolerance		
		Rhine 20220621	Rhine 20220621			UNIT: mm	X. ±0.50
						SCALE: 1:1	X.X ±0.2
						REV.: B	X.XX ±0.10
					SHEET: 01/01		X° ±1°