



1. MATERIALS: PLASTIC HOUSING; BLACK, THERMOPLASTIC
FLAMMABILITY RATING UL 94V-0
SHIELD: BRASS, PREPLATED WITH 0.76um MIN SEMI-BRIGHT NICKEL,
POST DIPPED WITH 2.54um MIN SAC SOLDER ON SOLDER TAILS,
CONTACTS: PHOSPHOR BRONZE, 1.27um MIN OVERALL NICKEL
UNDERPLATE WITH SELECT 1.27um MIN GOLD AT MATING INTERFACE
AND 2.54um MIN MATTE TIN ON SOLDER TAILS.
LED: DIFFUSED EPOXY LENS, CARBON STEEL LEAD FRAME
LEADS PREPLATED WITH 2.03um MIN SILVER OVER 1.02um MIN NICKEL
UNDERPLATE OVER 1.02um MIN COPPER UNDERPLATE. POST-PLATED
WITH 2.54um MIN MATTE TIN AND/OR SAC SOLDER DIP OR PURE TIN
SOLDER DIP

△ MAGNETICS

APPLICATION: 10/100/1000 BASE-T
IMPEDANCE: 100 OHMS
TURNS RATIO (CHIP: CABLE): 1:1 ALL FOUR PAIRS
OPEN CIRCUIT INDUCTANCE (OCL): 350uH MIN @100kHz, 0.1VRMS,
8mADC BIAS FROM 0°C TO 70°C, ALL FOUR PAIRS
ALL FOUR PAIRS BI-DIRECTIONAL
PERFORMANCE @ 25°C:
INSERTION LOSS (IL): 1.1dB MAX FROM 0.5MHz TO 100MHz
RETURN LOSS (RL): 18dB MIN FROM 0.5MHz TO 40MHz
12-20LOG(f/80)dB MIN FROM 40.1MHz TO 100MHz
CROSSTALK ATTENUATION: 35dB MIN FROM 0.5MHz TO 40MHz
33-20LOG(f/50)dB MIN FROM 40.1MHz TO 100MHz
COMMON MODE REJECTION RATIO (CMRR): 30dB MIN FROM 0.5MHz TO 100MHz
ISOLATION VOLTAGE: COMPLIES WITH IEEE802.3 2002, PARA 40.6.1.1, ITEM b

△ PART NUMBER, DATE CODE, COUNTRY OF ORIGIN, LOCATED IN THE APPROXIMATE AREA SHOWN.
DATE CODE YY IS YEAR, WW IS WORK WEEK, D IS DAY OF WEEK, WITH SUNDAY=1.

4. TE CONNECTIVITY LOGO, AGENCY APPROVAL MARKING LOGO LOCATED IN THE APPROXIMATE AREA SHOWN.

5. OPERATING TEMPERATURE: 0°C TO +70°C

△ RJ45 CAVITY CONFORMS TO FCC RULES AND REGULATION PART 68 SUBPART F

7 THESE PARTS ARE RECOMMENDED FOR WAVE SOLDERING PROCESS, PEAK SOLDERING TEMPERATURE 265°C MAX.10 SECONDS MAX.

△8 LEDS ARE DRIVEN WITH CONSTANT CURRENT AT APPROX 20 mA
LED COLOR: DOMINANT WAVELENGTH (λD): GREEN 568 nm TYP @ IF=20 mA
FORWARD VOLTAGE (VF): GREEN 2.2V TYP @ IF=20 mA
DOMINANT WAVELENGTH (λD): YELLOW 588 nm TYP @ IF=20 mA
FORWARD VOLTAGE (VF): YELLOW 2.1V TYP @ IF=20 mA

9 DATUM AND BASIC DIMENSION ESTABLISHED BY CUSTOMER

△ BASIC DIMENSION ESTABLISHED BY CUSTOMER, BUT MAY NOT BE GREATER THAN 5.08

▲ OBSOLETE PARTS: OBSOLETE CIS STREAMLINING PER D.RENAUD/D.SINII

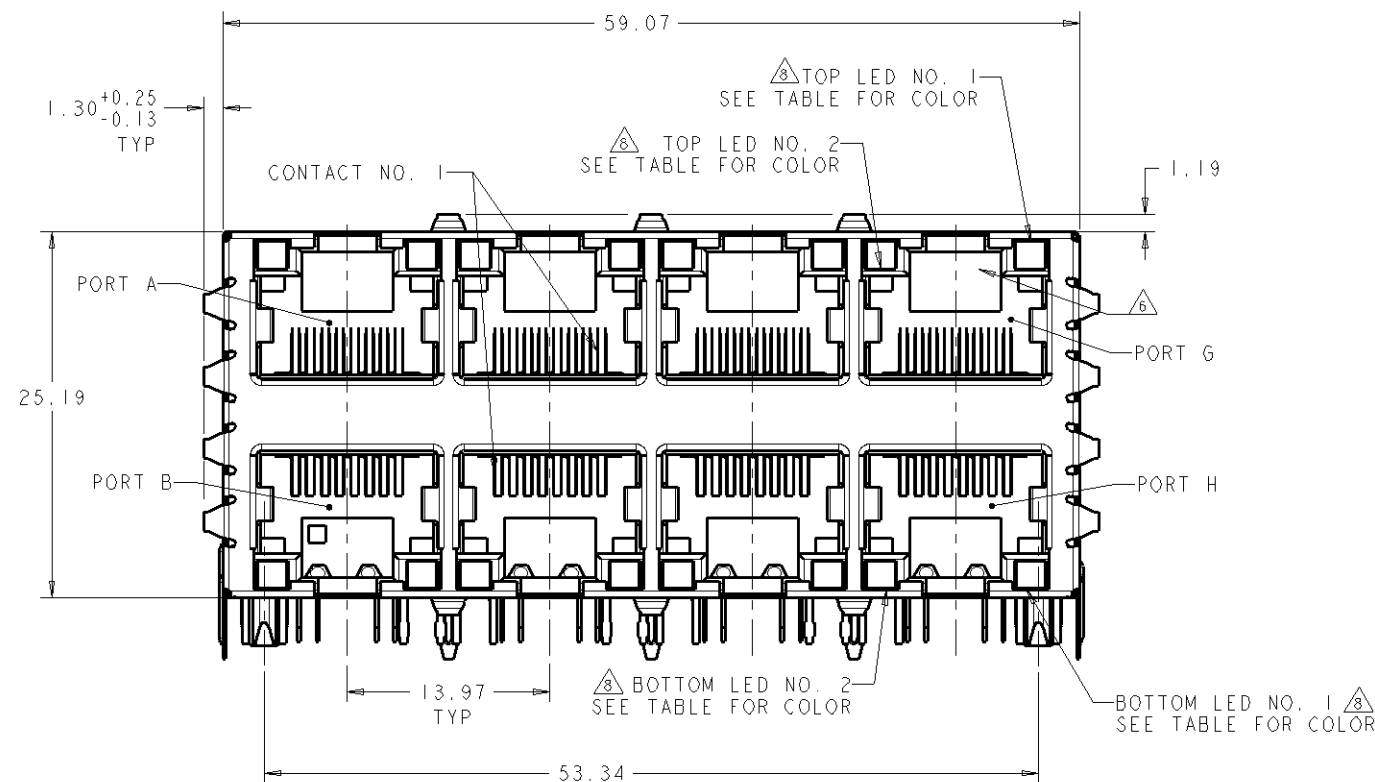
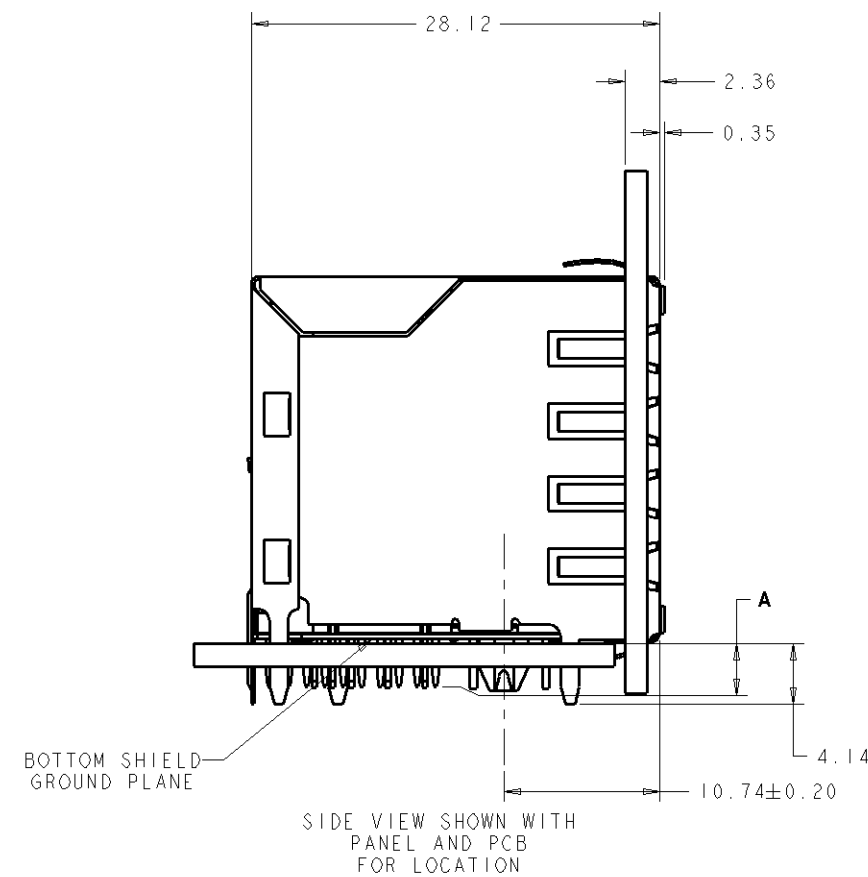
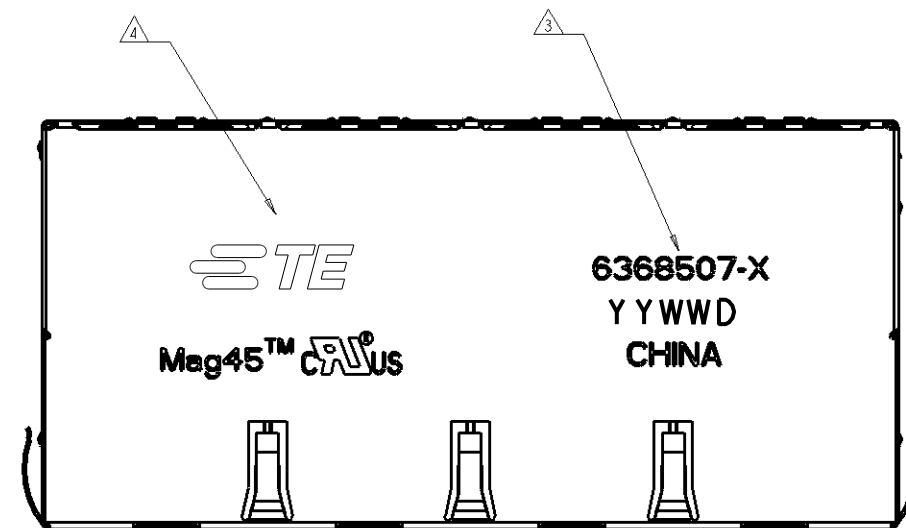


11
OBSOLETE

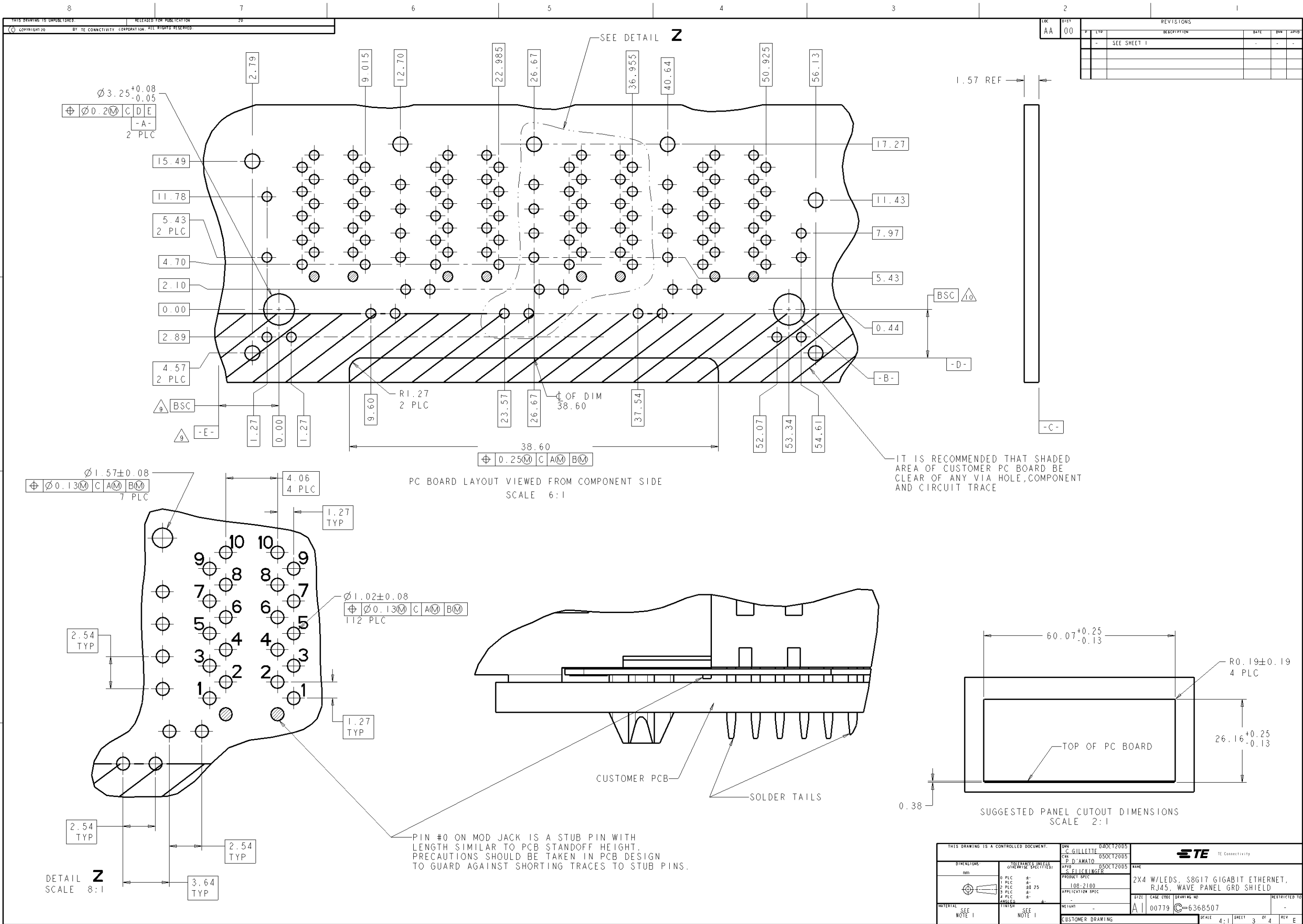
	3.04	GREEN	GRN/YEL	GREEN	GRN/YEL	1-6368507-5
	4.06	GRN/YEL	GRN/YEL	GRN/YEL	GRN/YEL	1-6368507-4
	3.04	GRN/YEL	GRN/YEL	GRN/YEL	GRN/YEL	6368507-4
	3.04	GREEN	YELLOW	GREEN	YELLOW	6368507-3
	3.04	YELLOW	GREEN	GREEN	YELLOW	6368507-2
	3.04	GREEN	GREEN	GREEN	GREEN	6368507-1
	DIM "A"	BOTTOM LED NO. 2	BOTTOM LED NO. 1	TOP LED NO. 2	TOP LED NO. 1	PART NUMBER

THIS DRAWING IS A CONTROLLED DOCUMENT.		DPN 040C2005 C. GILLETTE CHK 050C2005 P. D'AMATO APPR 050C2005 S. FLICKINGER		NUMBER 050C2005 DATE	
DIMENSIONS (mm)		OTHER DIMENSIONS, UNLESS OTHERWISE SPECIFIED: 0 PLC ± 1 PLC ± 2 PLC ± 3 PLC ± 4 PLC ± ANGLES ±		NAME 2X4 W/LEDS, S8G17 GIGABIT ETHERNET, RJ45, WAVE PANEL GRD SHIELD	
MATERIAL SEE NOTE 1		FINISH SEE NOTE 1		SIZE A1	
		WEIGHT -		CASE CODE 00779	
		CUSTOMER DRAWING		DRAWING NO. C-6368507	
				RESTRICTED TO SCALE 8:1 SHEET 1 OF 1 REV. F	

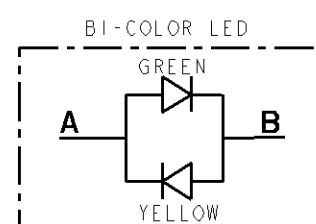
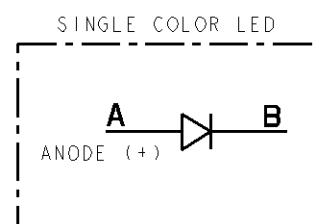
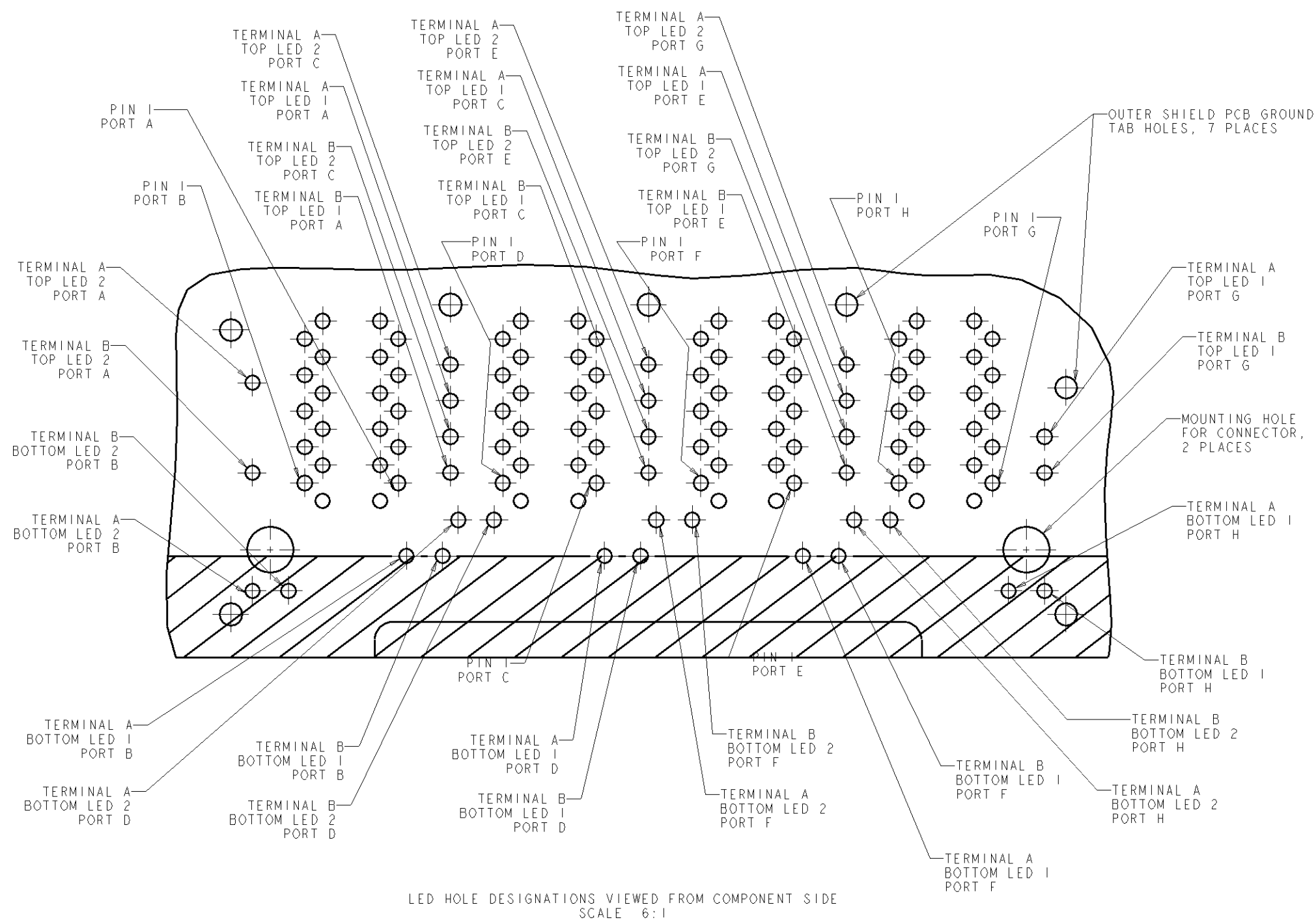
LOC	REV	REVISIONS			
		P	LET	DATE	APP'D
AA	00	-	SEE SHEET 1	-	-



THIS DRAWING IS A CONTROLLED DOCUMENT.		DRW: C. GILLETTE 05OCT2005	TE Connectivity	
DIMENSIONS: mm		CHK: P. D'AMATO 05OCT2005	NAME: S. CLICKINGER	
TOLERANCES UNLESS OTHERWISE SPECIFIED:		APP'D: S. CLICKINGER	PRODUCT SPEC: 2X4 W/LEDs, S8G17 GIGABIT ETHERNET, RJ45, WAVE PANEL GRD SHIELD	
0 PLG ±.05		108-2100	SIZE: A	
1 PLG ±.05		APPLICATION SPEC	CAGE CODE: 00779	
2 PLG ±.05		WEIGHT: -	DRAWING NO: 6368507	
3 PLG ±.05		CUSTOMER DRAWING	SCALE: 4:1	
4 PLG ±.05			SHEET: 2 OF 4	
ANGLES			REV: E	



REVISITONS		DATE	BY	APPD
AA	00			



THIS DRAWING IS A CONTROLLED DOCUMENT.		DRW: C. GILLETTE 04OCT2005	NAME: P. D'AMATO 05OCT2005		
DIMENSIONS: mm		APPR: S. CLICKINGER 05OCT2005	PRODUCT SPEC: 108-2100 APPLICATION SPEC: - WEIGHT: - CUSTOMER DRAWING		
TOLERANCES UNLESS OTHERWISE SPECIFIED:		NAME: 2X4 W/LEDS, S86P17 GIGABIT ETHERNET, RJ45, WAVE GAIN GRD SHIELD			
0 PLC ±.1		SIZE: 6368507			
1 PLC ±.25		CODE: 00779			
2 PLC ±.5		DRAWING NO: C-6368507			
3 PLC ±.75		RESTRICTED TO: -			
4 PLC ±.1		SCALE: 4:1			
ANGLES: ±.1		SHEET: 4 OF 4			
FINISH: SEE NOTE 1		REV: E			