



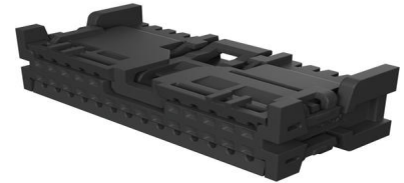
Part Number : [348240246](#)

Product Description : PROPOSED REPLACEMENT:
MINI50 GEN II UNSEALED RECEPTACLES (206523
SERIES); Mini50 Unsealed Receptacle, Dual Row, Non-
Bridged, 24 Circuits, EcoPaXX Resin, Polarization
Option C, Dark Gray

Series Number : 34824

Status : Active

Product Category : Connector Housings



Documents and Resources

Drawings

[348240246_sd.pdf](#)

[PK-31301-538-001.pdf](#)

3D Models and Design Files

[STEP AP242](#)

[SOLIDWORKS](#)

[Creo](#)

Specifications

[AS-34791-020-CH-001.pdf](#)

[AS-34791-020-001.pdf](#)

[AS-34791-020-CH-001.pdf](#)


[AS-34791-020-FR-001.pdf](#)

[PS-34791-020-001.pdf](#)

[347910020-TS-000.pdf](#)

Product Environment Compliance

Compliance

GADSL/IMDS	Compliant
China RoHS	 per SJ/T 11365-2006
EU ELV	Compliant per 2000/53/EC
Low-Halogen Status	Low-Halogen per IEC 61249-2-21

REACH SVHC	Not Contained per D(2025)7771-DC (04 Feb 2026)
EU RoHS	Compliant per EU 2015/863

Compliance Statements

- EU RoHS
- REACH SVHC
- Low-Halogen

Industry Documents

- IPC 1752A Class C
- IPC 1752A Class D
- Molex Product Compliance Declaration
- IEC-62474
- chemSHERPA (xml)

Substances of Interest

- PFAS

EU RoHS Certificate of Compliance

Additional Product Compliance Information

Part Details

General

Status	Active
Category	Connector Housings
Series	34824
Description	PROPOSED REPLACEMENT: MINI50 GEN II UNSEALED RECEPTACLES (206523 SERIES); Mini50 Unsealed Receptacle, Dual Row, Non-Bridged, 24 Circuits, EcoPaXX Resin, Polarization Option C, Dark Gray
Application	Automotive, Power, Wire-to- Board
Product Name	Mini50
UPC	191128224833

Physical

Circuits (maximum)	24
Color - Resin	Gray (Dark)

Gender	Receptacle
Glow-Wire Capable	No
Keying to Mating Part	Yes
Lock to Mating Part	Yes
Material - Resin	Nylon
Net Weight	2.287/g
Number of Rows	2
Packaging Type	Bag
Panel Mount	No
Pitch - Mating Interface	2.00mm
Pitch - Termination Interface	2.00mm
Polarization	C
Polarized to Mating Part	Yes
Stackable	No
Temperature Range - Operating	-40° to +105°C

Mates With / Use With

Mates with Part(s)

Description	Part Number
Mini50 Unsealed Dual Row Vertical Headers	<u>34825</u>
Mini50 Unsealed Dual Row Right-Angle Headers	<u>34826</u>
Mini50 Unsealed Dual Row Right-Angle Headers	<u>34897</u>

Use with Part(s)

Description	Part Number
CTX50 Unsealed Receptacle Terminals	<u>560023</u>

This document was generated on May 13, 2026