



Pushing Performance
Since 1945

PCB-Adapter Han DD 1.6mm (LCP)

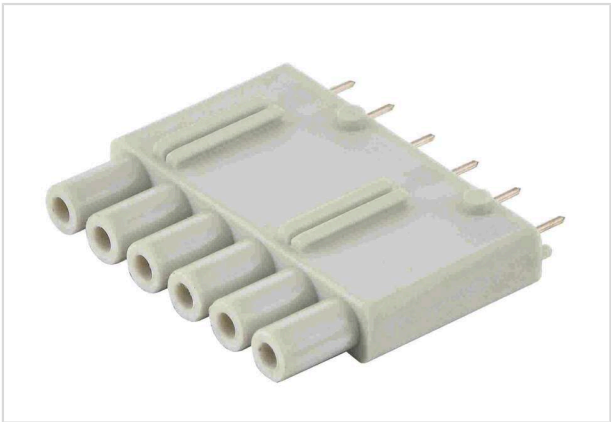


Image is for illustration purposes only. Please refer to product description.

Part number	09 16 000 9996
Specification	PCB-Adapter Han DD 1.6mm (LCP)
HARTING eCatalogue	https://b2b.harting.com/09160009996

Identification

Category	Accessories
Type of accessory	PCB adapter
Description of the accessory	In the Han DD [®] crimp insert
	In the Han DD [®] module
	In the Han [®] DDD module (different electrical data: 7.5 A 160 V 2.5 kV 3)

Version

Gender	Male
	Female
Details	for PCB's up to 1.6 mm

Technical characteristics

Rated current	7.5 A
Rated voltage	250 V
Rated impulse voltage	4 kV
Pollution degree	3
Limiting temperature	-40 ... +125 °C

Material properties

Material (insert)	Liquid crystal polymer (LCP)
-------------------	------------------------------

Commercial data

Packaging size	10
Net weight	1.65 g



Pushing Performance
Since 1945

Commercial data

Country of origin	Romania
European customs tariff number	85389099
GTIN	5713140190672
eCl@ss	27460201 PCB connector (board connector)