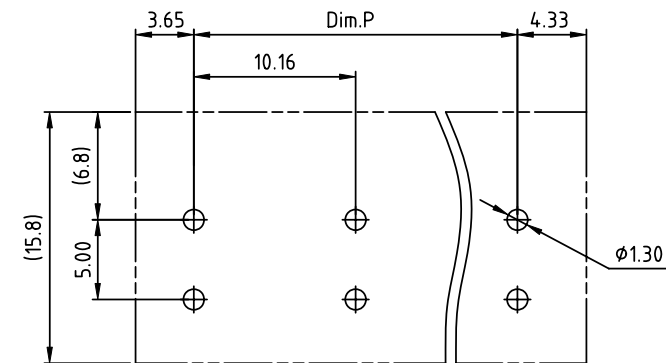
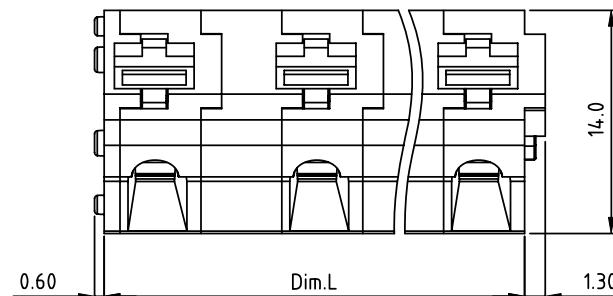


PRODUCT NUMBER	PITCH
HTxx40x000J0G	10.16mm



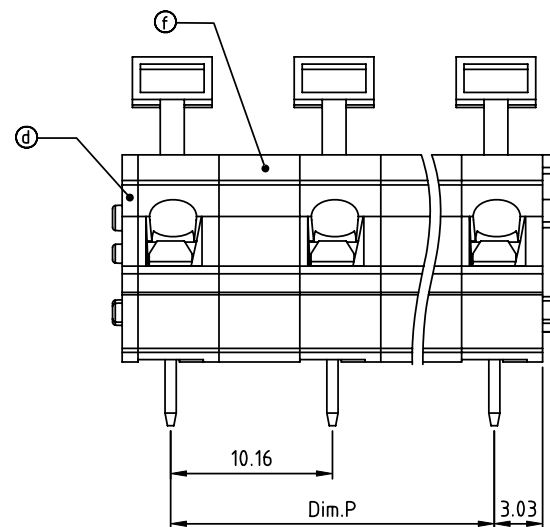
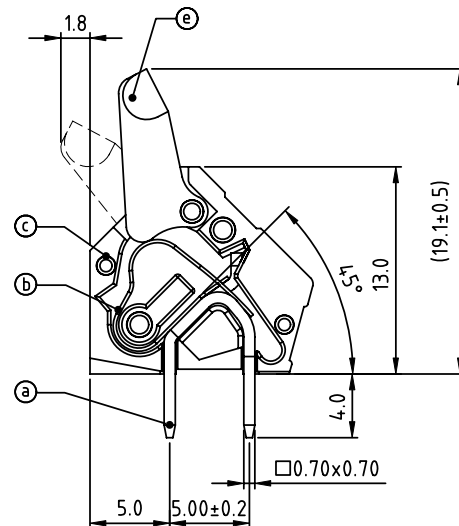
RECOMMENDED P.C.B LAYOUT
TOP VIEW

Material:

- Item (a) Solder pin: Brass, Tin plated
- Item (b) Spring clamp: Stainless steel
- Item (c) Terminal housing: Thermoplastic (UL94V-0)
- Item (d) Terminal cover: Thermoplastic (UL94V-0)
- Item (e) Terminal lever: Thermoplastic (UL94V-HB)
- Item (f) Pad board: Thermoplastic (UL94V-0)

Electrical

- Voltage rating: 300V
- Current rating: 15A
- Wire range:
- Solid wire (AWG): 12-28
- Stranded wire (AWG): 12-28
- Wire strip length: 6-7mm
- Withstanding Voltage: 1.6KV
- Operating temperature: -40°C to +115°C
- Soldering temperature: 260°C ± 5°C / 5 Sec
- Safety Approval: cULus



PART NO.: HT xx 40 x 000J0 G

Dim.P = (N-1) × 10.16
Dim.L = (N-1) × 10.16 + 6.08
N = Number of poles

POLES	Dim.L	Dim.P
2p-6p	±0.25	±0.25
7p-12p	±0.40	±0.35

No. of poles	Body Color	RoHS compliant
02 2 poles	Black (RAL9005)	(lead < 4%)
03 3 poles	Red (RAL3001/D)	In copper Alloy
...	Orange (RAL2011/P)	
...	Yellow (RAL1018/A)	
...	Green (RAL6018/T)	
12 12 poles	Blue (RAL5015/A)	
	Grey (RAL7004/P)	
	White (RAL1102)	
	C Multiple colors	

mat'l. code				surface	tolerance	projection	product family			
ltr ecn no dr date				ASME Y14.5	ASME Y14.5		TERMINAL BLOCK			
				tolerances unless otherwise specified			title			
				angles			TERMINAL BLOCK			
				tolerances			SPRING CLAMP, 4SD WIRE INLET			
				X'±1"	X.XX±0.1		scale			
				dr	EVIN ZHONG	052814	dwg no			
				enr	EVIN ZHONG	052814	sheet 1 of 1			
				chr	HANKE FENG	052814	size			
				appd	SHI JUN	052814	A4			
sheet index				revision	A		type			
sheet				sheet	1		CUSTOMER Drawing			