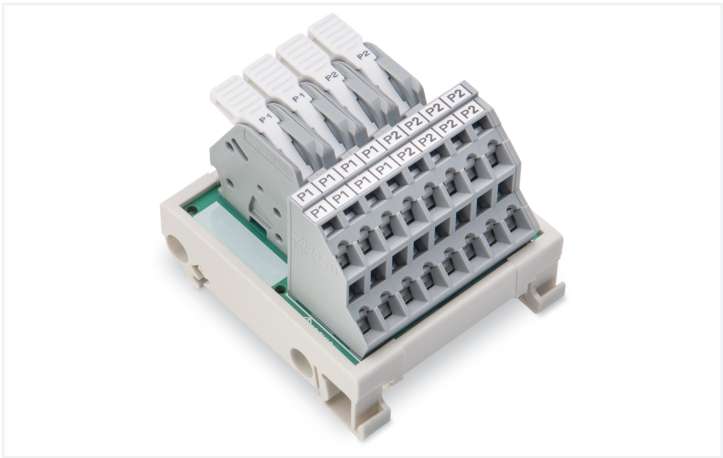


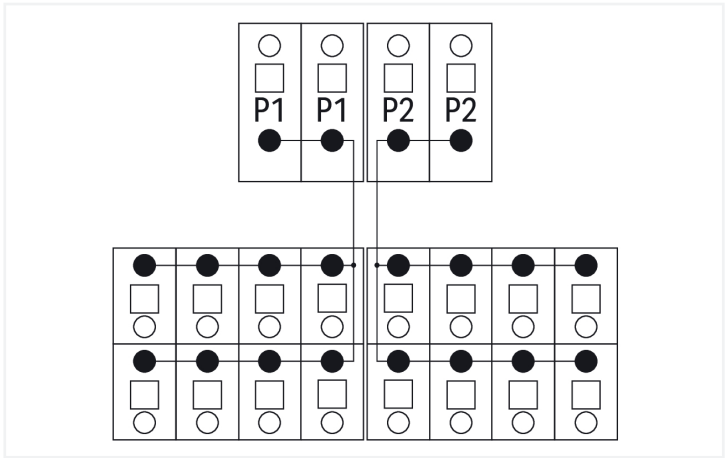
Data Sheet | Item Number: 830-800/000-315

Potential distribution module; 2 potentials; with 2 input clamping points each; Conductor cross-section up to 6 mm²; with lever; with 8 output clamping points each; Conductor cross-section up to 2.5 mm²; gray

<https://www.wago.com/830-800/000-315>



Color: ■ gray



| Electrical data | |
|------------------------------------|---|
| Operating voltage | ≤ 250 VAC/VDC |
| Current per connection (max.) | 10 A |
| Total current per potential (max.) | 30 A |
| Specialty functions | with 2 input clamping points each; with 8 output clamping points each |

| Connection data | |
|--------------------------------|-------------------------------------|
| Total number of potentials | 2 |
| Note (conductor cross-section) | 12 AWG: THHN, THWN |
| Connection 1 | |
| Connection type | Input |
| Mating direction | 30° |
| Actuation type | Lever |
| Connection technology | CAGE CLAMP® |
| WAGO connector | WAGO 2706 Series |
| Solid conductor | 0.5 ... 6 mm² / 20 ... 10 AWG |
| Fine-stranded conductor | 0.5 ... 6 mm² / 20 ... 10 AWG |
| Strip length | 11 ... 12 mm / 0.43 ... 0.47 inches |

| Connection 2 | |
|-------------------------|----------------------------------|
| Connection type | Output |
| Mating direction 2 | vertical |
| Connection technology | CAGE CLAMP® |
| WAGO connector | WAGO 736 Series |
| Solid conductor | 0.08 ... 2.5 mm² / 28 ... 12 AWG |
| Fine-stranded conductor | 0.08 ... 2.5 mm² / 28 ... 12 AWG |
| Strip length | 5 ... 6 mm / 0.2 ... 0.24 inches |



| Physical data | | |
|-----------------------------------|--|-------------------------------|
| Width | | 49 mm / 1.92 inches |
| Height | | 55 mm / 2.17 inches |
| Depth from upper-edge of DIN-rail | | 38 mm / 1.47 inches |
| Mechanical data | | |
| Mounting type | | DIN-35 rail |
| Housing design | | Mounting carrier |
| Material data | | |
| Color | | gray |
| Fire load | | 0.695 MJ |
| Weight | | 64.7 g |
| Environmental requirements | | |
| Ambient temperature (operation) | | -20 ... +50 °C |
| Relative humidity | | ≤ 95 % (without condensation) |
| Standards and specifications | | |
| Standards/specifications | | cULus 61010-2-201 |
| Commercial data | | |
| PU (SPU) | | 6 (1) pcs |
| Packaging type | | Box |
| Country of origin | | US |
| GTIN | | 4055143380089 |
| Customs tariff number | | 85369010000 |
| Product classification | | |
| UNSPSC | | 39121410 |
| eCl@ss 10.0 | | 27-14-11-52 |
| eCl@ss 9.0 | | 27-14-11-52 |
| ETIM 9.0 | | EC002780 |
| ETIM 8.0 | | EC002780 |
| ECCN | | EAR99 |
| Environmental Product Compliance | | |
| RoHS Compliance Status | | Compliant,No Exemption |



Approvals / Certificates

General approvals



| Approval | Standard | Certificate Name |
|----------------------------|----------------|------------------|
| EAC GZO Almaty Standart | TP TC 004/2011 | EAC CoC 03084 |

Declarations of conformity and manufacturer's declarations

| Approval | Standard | Certificate Name |
|---|----------|------------------|
| EU-Declaration of Confor- mity WAGO GmbH & Co. KG | - | - |
| UK-Declaration of Confor- mity WAGO GmbH & Co. KG | - | - |

Downloads

Environmental Product Compliance

Compliance Search

| | |
|--|--|
| Environmental Product Compliance 830-800/000-315 | |
|--|--|

Documentation

Bid Text

| | | | |
|-----------------|------------|------------------|--|
| 830-800/000-315 | 19.02.2019 | xml 3.69 KB | |
| 830-800/000-315 | 01.07.2019 | docx 15.52 KB | |

CAD/CAE-Data

CAD data

| | |
|---------------------------------|--|
| 2D/3D Models 830-800/000-315 | |
|---------------------------------|--|

CAE data

| | |
|--------------------------------------|--|
| EPLAN Data Portal 830-800/000-315 | |
| ZUKEN Portal 830-800/000-315 | |

1 Compatible Products

1.1 Optional Accessories

1.1.1 Ferrule

1.1.1.1 Ferrule



Item No.: 216-262
Ferrule; Sleeve for 0.75 mm² / 18 AWG; in-
sulated; electro-tin plated; electrolytic
copper; gastight crimped; acc. to DIN
46228, Part 4/09.90; gray



Item No.: 216-263
Ferrule; Sleeve for 1 mm² / AWG 18; insu-
lated; electro-tin plated; electrolytic cop-
per; gastight crimped; acc. to DIN 46228,
Part 4/09.90; red



Item No.: 216-264
Ferrule; Sleeve for 1.5 mm² / AWG 16; in-
sulated; electro-tin plated; electrolytic
copper; gastight crimped; acc. to DIN
46228, Part 4/09.90; black



Item No.: 216-284
Ferrule; Sleeve for 1.5 mm² / AWG 16; in-
sulated; electro-tin plated; electrolytic
copper; gastight crimped; acc. to DIN
46228, Part 4/09.90; black



1.1.1.1 Ferrule



Item No.: 216-266

Ferrule; Sleeve for 2.5 mm² / AWG 14; insulated; electro-tin plated; electrolytic copper; gastight crimped; acc. to DIN 46228, Part 4/09.90; blue



Item No.: 216-286

Ferrule; Sleeve for 2.5 mm² / AWG 14; insulated; electro-tin plated; electrolytic copper; gastight crimped; acc. to DIN 46228, Part 4/09.90; blue



Item No.: 216-267

Ferrule; Sleeve for 4 mm² / AWG 12; insulated; electro-tin plated; electrolytic copper; gastight crimped; acc. to DIN 46228, Part 4/09.90; gray



Item No.: 216-287

Ferrule; Sleeve for 4 mm² / AWG 12; insulated; electro-tin plated; electrolytic copper; gastight crimped; acc. to DIN 46228, Part 4/09.90; gray



Item No.: 216-208

Ferrule; Sleeve for 6 mm² / AWG 10; insulated; electro-tin plated; electrolytic copper; gastight crimped; acc. to DIN 46228, Part 4/09.90; yellow



Item No.: 216-288

Ferrule; Sleeve for 6 mm² / AWG 10; insulated; electro-tin plated; electrolytic copper; gastight crimped; acc. to DIN 46228, Part 4/09.90; yellow

1.1.2 Marking

1.1.2.1 Marking strip



Item No.: 709-196

Marking strips; for laser printer; translucent



Item No.: 210-831

Marking strips; on reel; 2.3 mm wide; plain; Self-adhesive; white



Item No.: 210-832

Marking strips; on reel; 3 mm wide; plain; Self-adhesive; white



Item No.: 709-177

Marking strips; on reel; 7.5 mm wide; not stretchable; plain; snap-on type; translucent



Item No.: 709-178

Marking strips; on reel; 7.5 mm wide; not stretchable; plain; snap-on type; white

1.1.3 Tool

1.1.3.1 Operating tool



Item No.: 210-720

Operating tool; Blade: 3.5 x 0.5 mm; with a partially insulated shaft; multicoloured